



# SB 54 Plastic Pollution Mitigation Fund

Community Engagement  
Kickoff Webinar

March 26, 2026



# Presentation Overview

- Agency Introductions
- SB 54 Overview
- Plastic Pollution Mitigation Fund (PPMF) Overview
- What can and cannot be funded by the PPMF
- Next Steps



# Agency Introductions



**Our mission is to restore, protect and enhance the environment, to ensure public health, environmental quality and economic vitality.**



**Air Resources Board:** protects the public from harmful effects of air pollution and leads the nation in fighting climate change.



**Department of Toxic Substances Control:** protects the public and environment from toxic substances, restores contaminated land, and compels manufacturers to produce safer consumer products.



**CalRecycle:** helps the state achieve waste reduction, reuse, and recycling of California resources and helps the state transition from a disposable to a fully circular economy



**Office of Environmental Health Hazard Assessment:** provides scientific foundation for environmental regulations to protect the health of Californians and offers information on chemical safety in the environment.



**Department of Pesticide Regulation:** protects human health and the environment by fostering sustainable pest management and regulating pesticides.



**Water Board:** protects our water quality and drinking water and administers our water rights system.



**Our mission is to help Californians and nature thrive together.**

**26** Departments, Conservancies, and Commissions

### **Key Priorities**

- Outdoors for All
- Protecting Biodiversity
- Building Climate Resilience
- Expanding Nature-Based Solutions
- Cutting Green Tape
- Strengthening Tribal Partnerships





CALIFORNIA  
STRATEGIC  
GROWTH  
COUNCIL

The mission of the Council is to coordinate and work collaboratively with public agencies, communities, and partners to achieve sustainability, equity, economic prosperity, and quality of life for all Californians.



### Investment Programs



### Capacity Building and Technical Assistance



### Integrated Policy & Planning Pilot Projects & Special Initiatives

### Programs & Initiatives

Transformative Climate Communities

Community Resilience Centers

Affordable Housing and Sustainable Communities

Sustainable Agricultural Lands Conservation

Health In All Policies

Regional Climate Communities

Tribal Capacity Pilot

Community Assistance for Climate Equity Programs

Land Equity Task Force

Factory Built Housing

Connecting Communities



## Duty to serve the state and work honorably every day to fulfill California's promise.

The Attorney General and Department of Justice employees provide leadership, information and education in partnership with state and local governments and the people of California to:



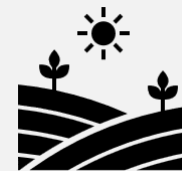
Enforce and apply all of our laws fairly and impartially.



Encourage economic prosperity, equal opportunity, and tolerance.



Ensure justice, safety, and liberty for everyone.



Safeguard California's human, natural, and financial resources for this and future generations.

# SB 54 Overview



# SB 54 Requirements by 2032

For Single-Use Plastic:

- Packaging
- Food Service Ware



**25% Less Overall**



**65% Recycled**

For All Types of Packaging and Single-Use Plastic Food Ware



**100%  
Recyclable or  
Compostable**



# Extended Producer Responsibility (EPR)

EPR means industry supports end of life management of products, by:



Designing products to be easily reused or recycled



Collecting material



Ensuring recycling

## Goals of an EPR program:



Reduce Trash Pollution



Make Recycling Convenient



Reduce Recycling Costs for Local Government

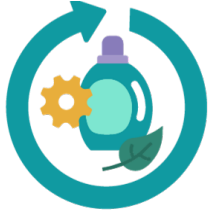
## Typical Structure

State Agency

Individual Producers

Some EPRs also have external advisory boards

# Implementation Progress



Circular Action Alliance named  
Producer Responsibility Organization



Packaging Producer Responsibility Advisory  
Board appointed and meeting monthly



Needs Assessment in development



Finalizing regulations with the Office of  
Administrative Law



# Plastic Pollution Mitigation Fund Overview

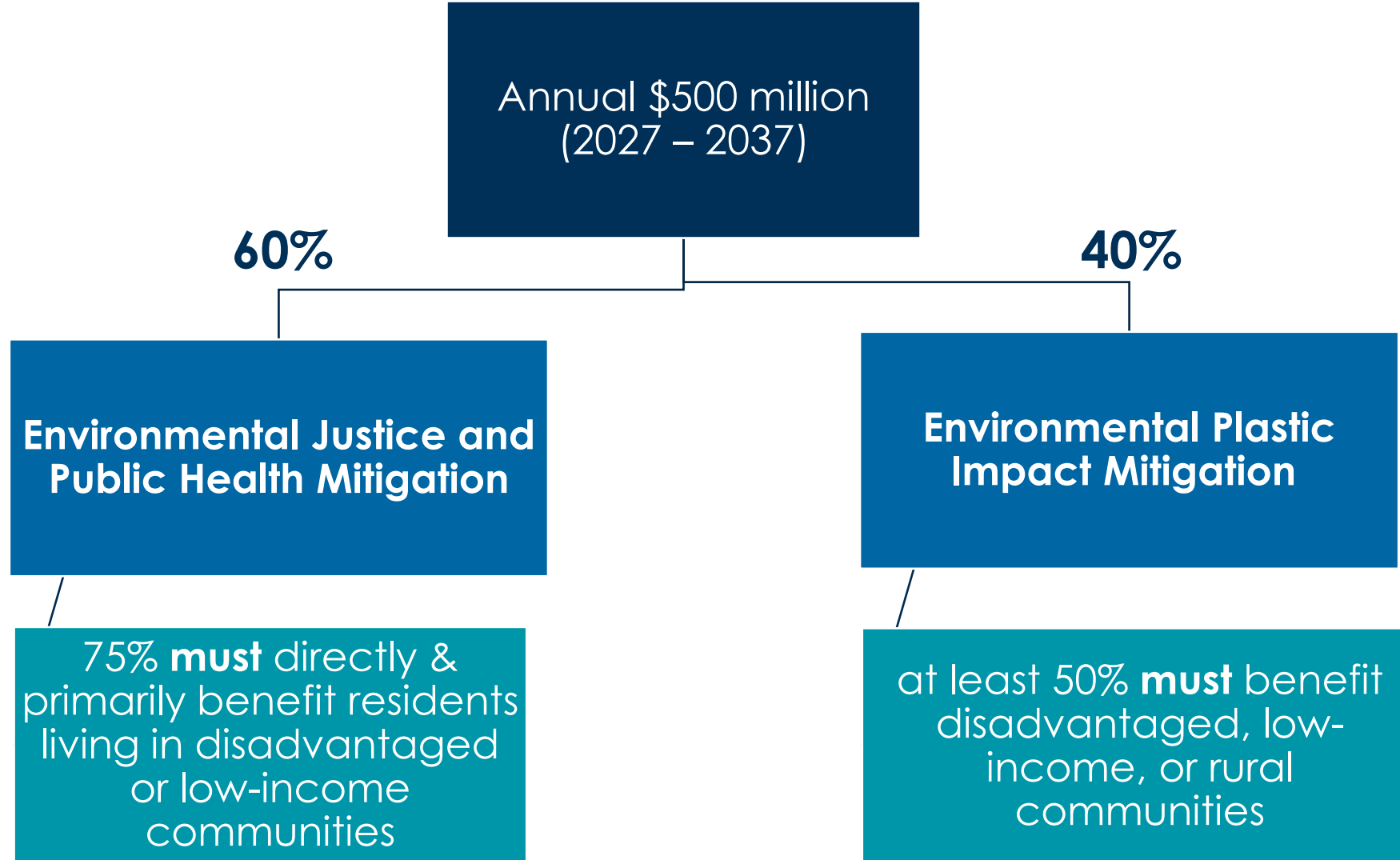


# Plastic Pollution Mitigation Fund

**Starting in 2027, producers must pay \$5 billion over 10 years to the Fund to:**

- Mitigate the impacts of plastic pollution on tribes, communities and the environment
- Address current and historical environmental concerns as they relate to plastic
- Protect the public health of tribes and communities disproportionately impacted by plastic pollution

## Upon appropriation by the legislature



# Environmental Justice & Public Health Mitigation

## 60% of the Mitigation Fund

- Public Resource Code 42064(k): “... monitor and reduce the historical and current environmental justice and public health impacts of plastics, including to mitigate the historical and current impacts of plastics on disadvantage or low-income communities or rural areas.”
- 75% shall directly and primarily benefit residents living in disadvantaged or low-income communities or rural areas
- May be used to support grants to local jurisdictions, tribes, nongovernmental organizations, and community-based organizations

# Environmental Justice & Public Health Impact Mitigation



# Environmental Plastic Impact Mitigation

## 40% of the Mitigation Fund

- Public Resource Code 42064(j): “...monitor and reduce the environmental impacts of plastics on terrestrial, aquatic, and marine life and human health, including to restore, recover, and protect the natural environment.”
- at least 50% shall provide benefits to residents living in disadvantaged or low-income community or rural areas
- May be used to support grants for tribes, nongovernmental organizations, community-based organizations, land trusts, and local jurisdictions

# Environmental Plastic Impact Mitigation





**What could be funded?**



# General funding principles:



Prioritizing community-led solutions



Provide meaningful benefits to communities

# Evaluate Impacts & Mitigation Benefits



## Outreach & Education

Increase understanding of the environmental and public health impacts of plastics across their full lifecycle.



## Research & Monitoring

Empower communities by identifying and quantifying impacts



## Public Health & Exposure Reduction

Reduce plastic-related health risks

# Protect, Restore, & Strengthen Communities



## Community-Led Pollution Prevention

Support communities in reducing their plastic use



## Removal, Restoration, & Remediation

Address legacy and ongoing plastic contamination



## Public Infrastructure for Communities

Protect communities from the environmental impacts of plastics



## Technical Assistance & Capacity Building

Ensure equitable access to funding

# What cannot be funded by PPMF?

Costs related to implementing SB 54. For example:

- Source reduction within covered industries
- Extended producer responsibility program operations or implementation
- General consumer and ratepayer outreach and education
- Research and development of new packaging products
- Transportation of materials to responsible end markets
- Cleaning, sorting, aggregating, and bailing covered materials
- Improvements to collecting, sorting, decontaminating, remanufacturing covered material
- Curbside and noncurbside collection programs
- Infrastructure necessary to ensure reusability of covered material
- Infrastructure necessary to achieve recycling rates



**We want to hear  
from you!**

# Next Steps:

1

Visit the PPMF  
[website](#)



2

Fill out our  
[survey](#)

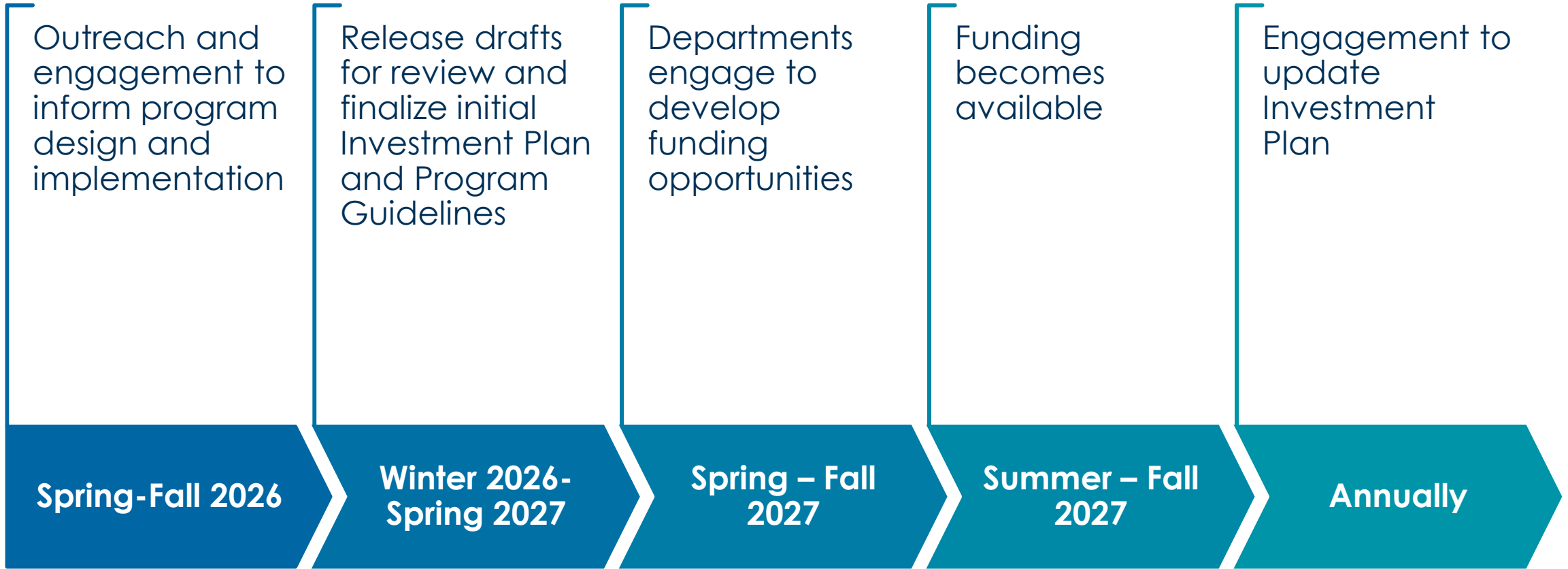


3

Sign up for  
engagement  
events



# Timeline of Outreach & Engagement



# Upcoming Outreach & Engagement

---

- In-Person/Hybrid, Regional Community Roundtables
- Tribal Consultation opens today
- In-Person/Hybrid Tribal Round Tables
- Online Survey opens March 26 (Today!)

Check out our [PPMF landing page](#) for updates



A scenic landscape featuring rolling green hills in the background, a large body of water in the middle ground, and a blue sky with scattered white clouds. The text "Thank you!" is overlaid in the center in a large, white, sans-serif font. The bottom of the image shows a rocky shoreline and a darker, more turbulent section of the water.

**Thank you!**