

## Appendix D

Figures **D1** through **D40**: UHII in units of degree-hours per day (DH/day), for various UHII tiles.

In this appendix, the plotted ranges of UHII, bins (intervals), and color codes are similar across the maps. In this set of maps, the color scale is expanded to provide better discrimination of UHII across different areas while maintaining the same scale and intervals (bins) across all regions in California.

All maps are oriented with north pointing up. The dots represent the centroids of the census tracts.

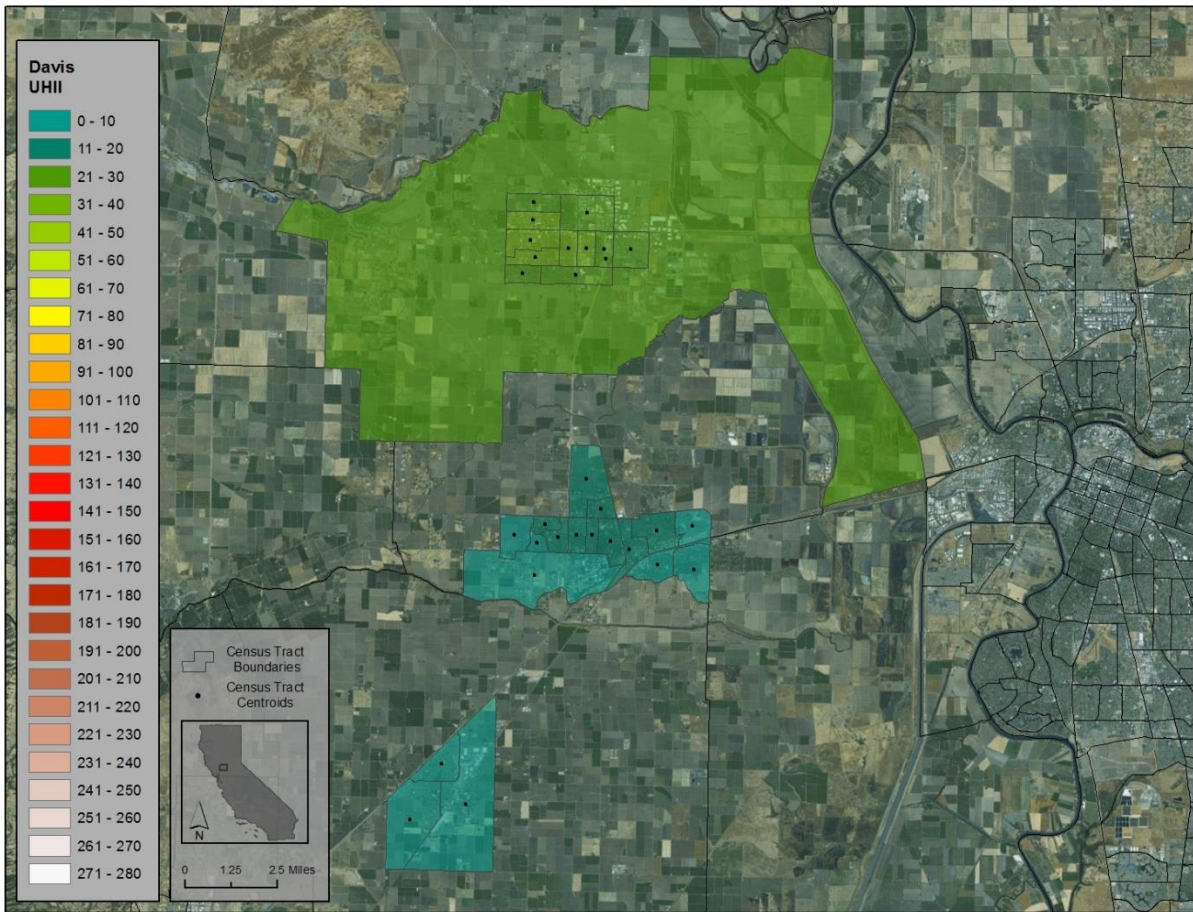


Figure D1: Woodland, Davis, and Dixon areas UHII (DH/day).  
 Average temperature difference between warmest and coolest census tracts is 1.3°C.

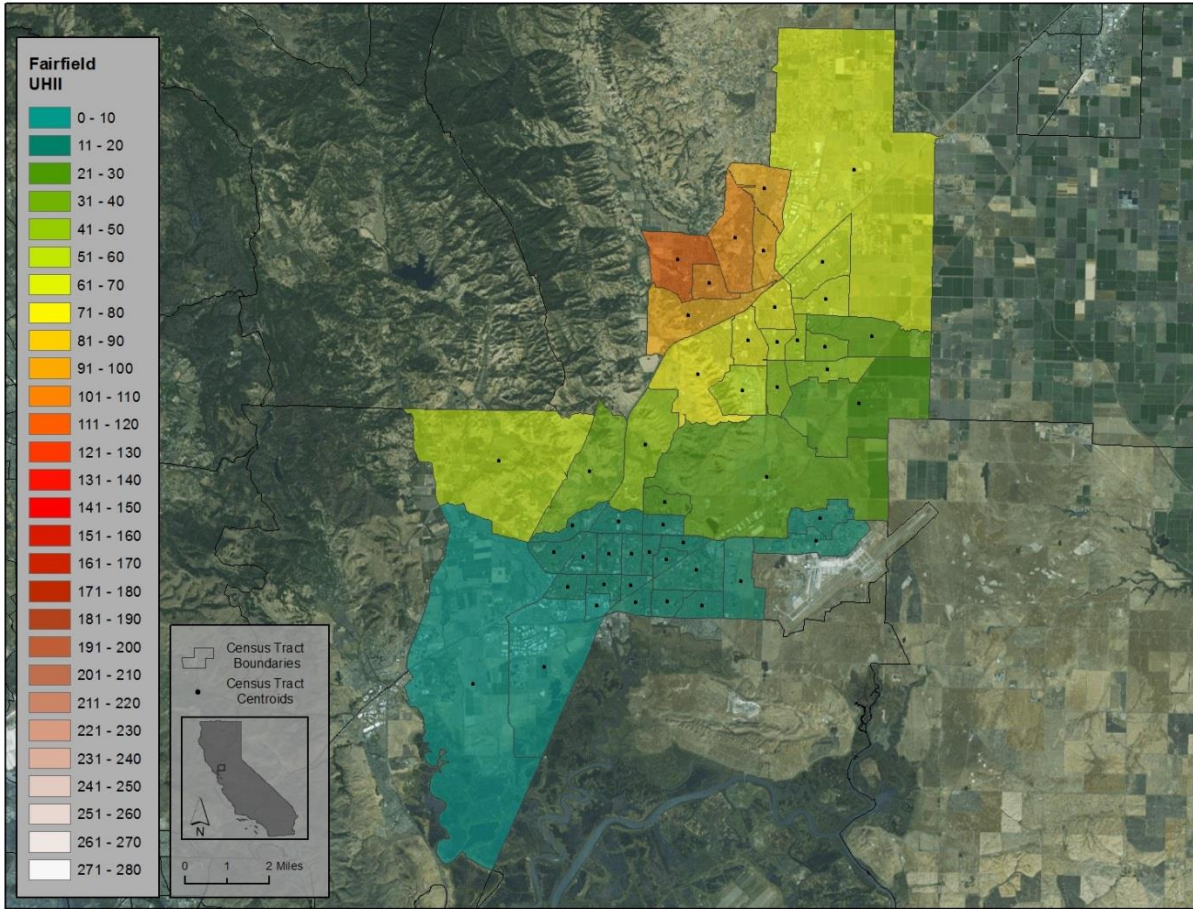


Figure D2: Fairfield and Vacaville areas UHII (DH/day).  
 Average temperature difference between warmest and coolest census tracts is 4.6°C.

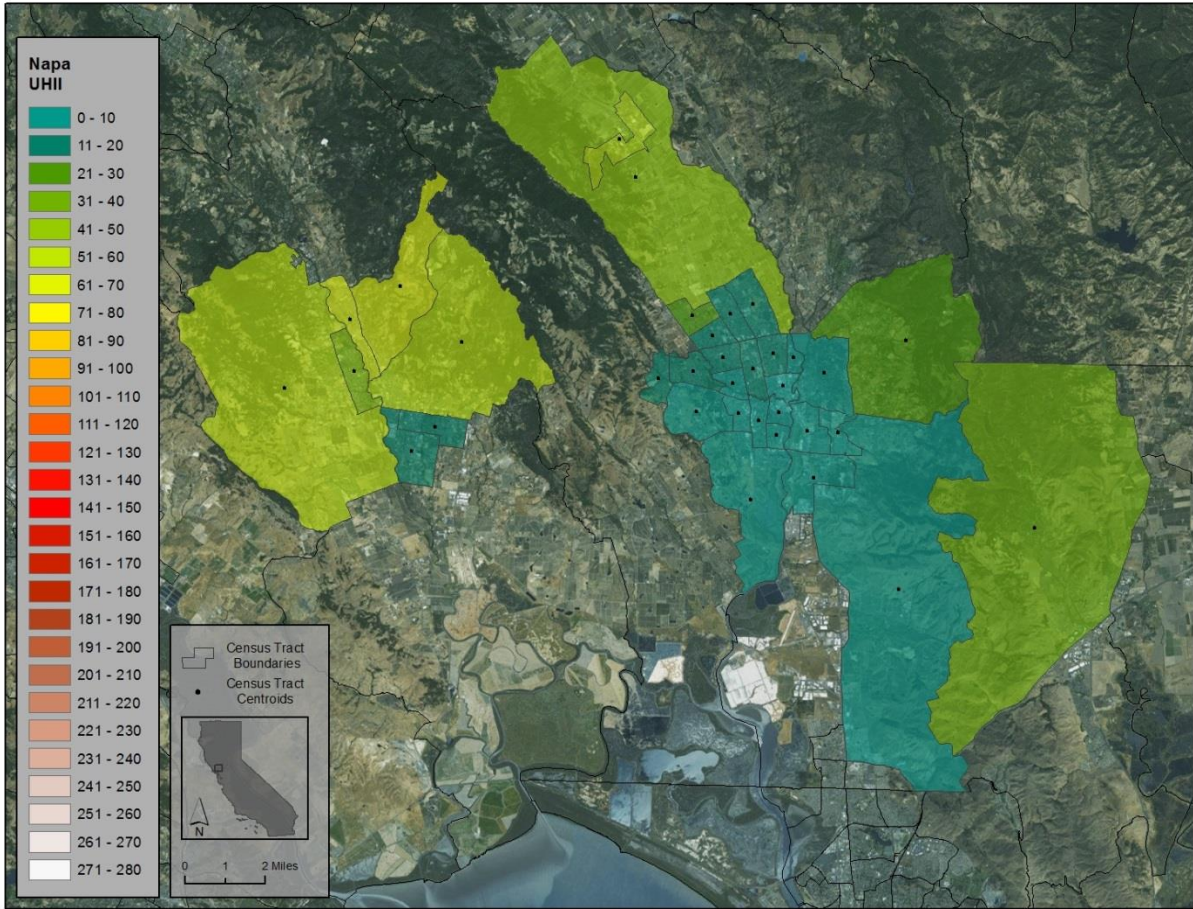


Figure D3: Napa and Sonoma areas UHII (DH/day).  
Average temperature difference between warmest and coolest census tracts is 2.8°C.

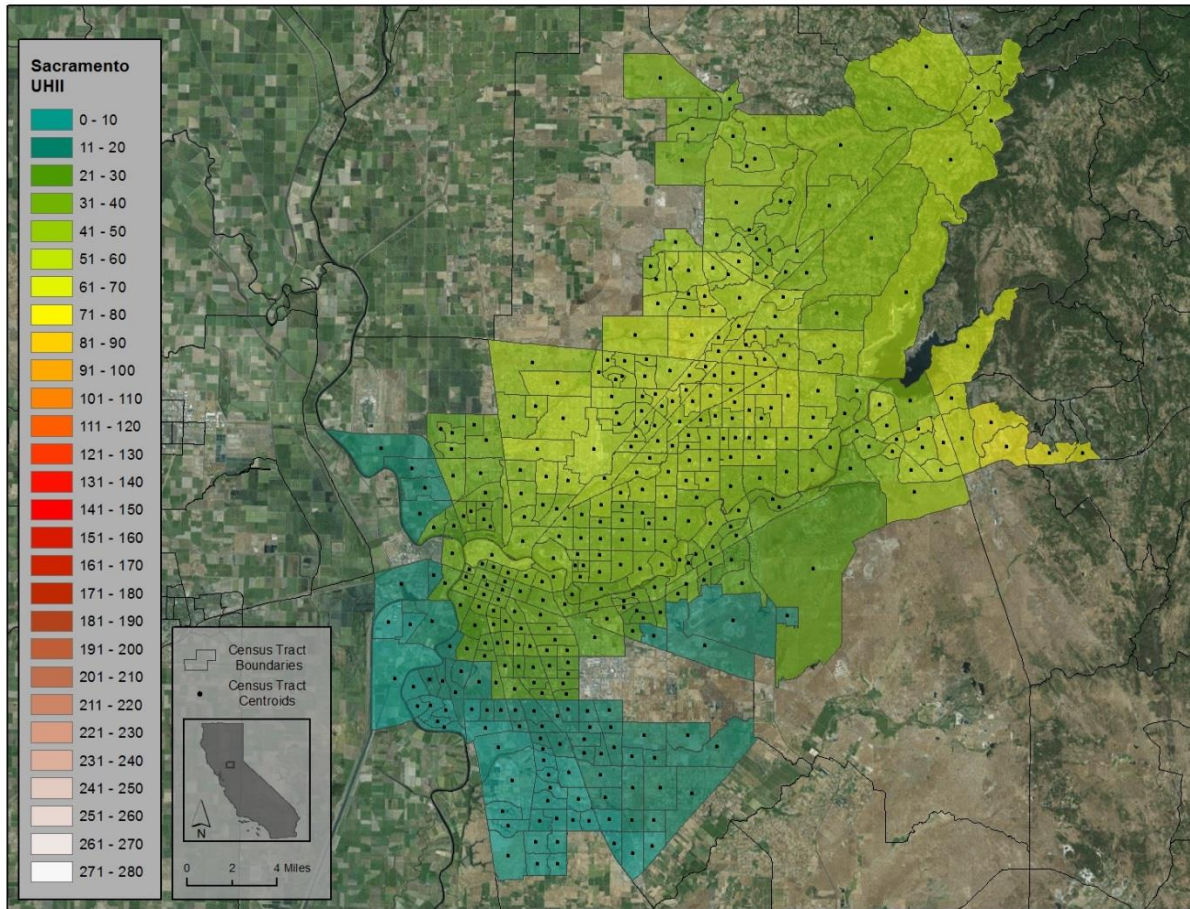


Figure D4: Sacramento and Auburn areas UHII (DH/day).  
Average temperature difference between warmest and coolest census tracts is 3.0°C.

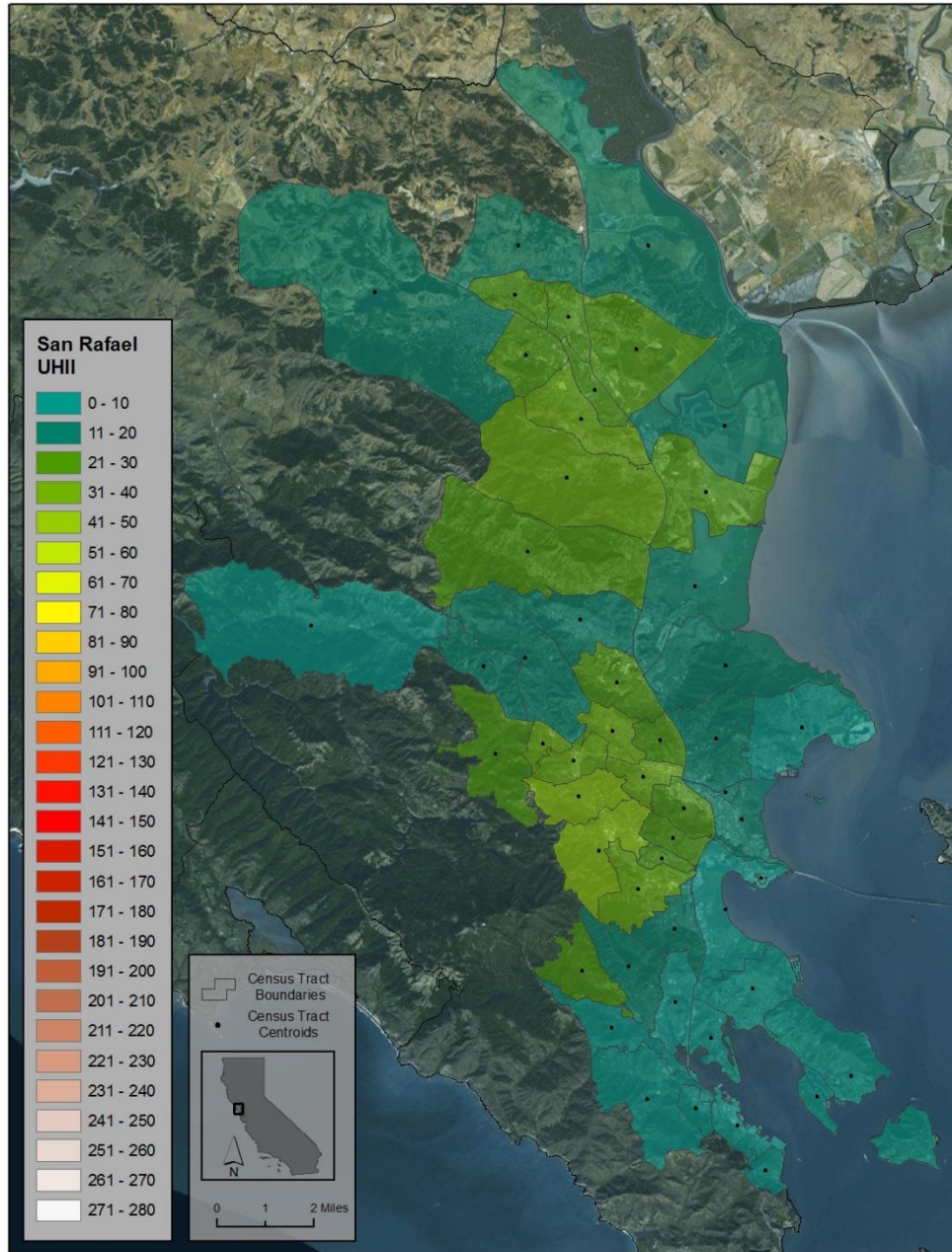


Figure D5: Sausalito, San Rafael, and Novato areas UHII (DH/day).  
Average temperature difference between warmest and coolest census tracts is 1.7°C.

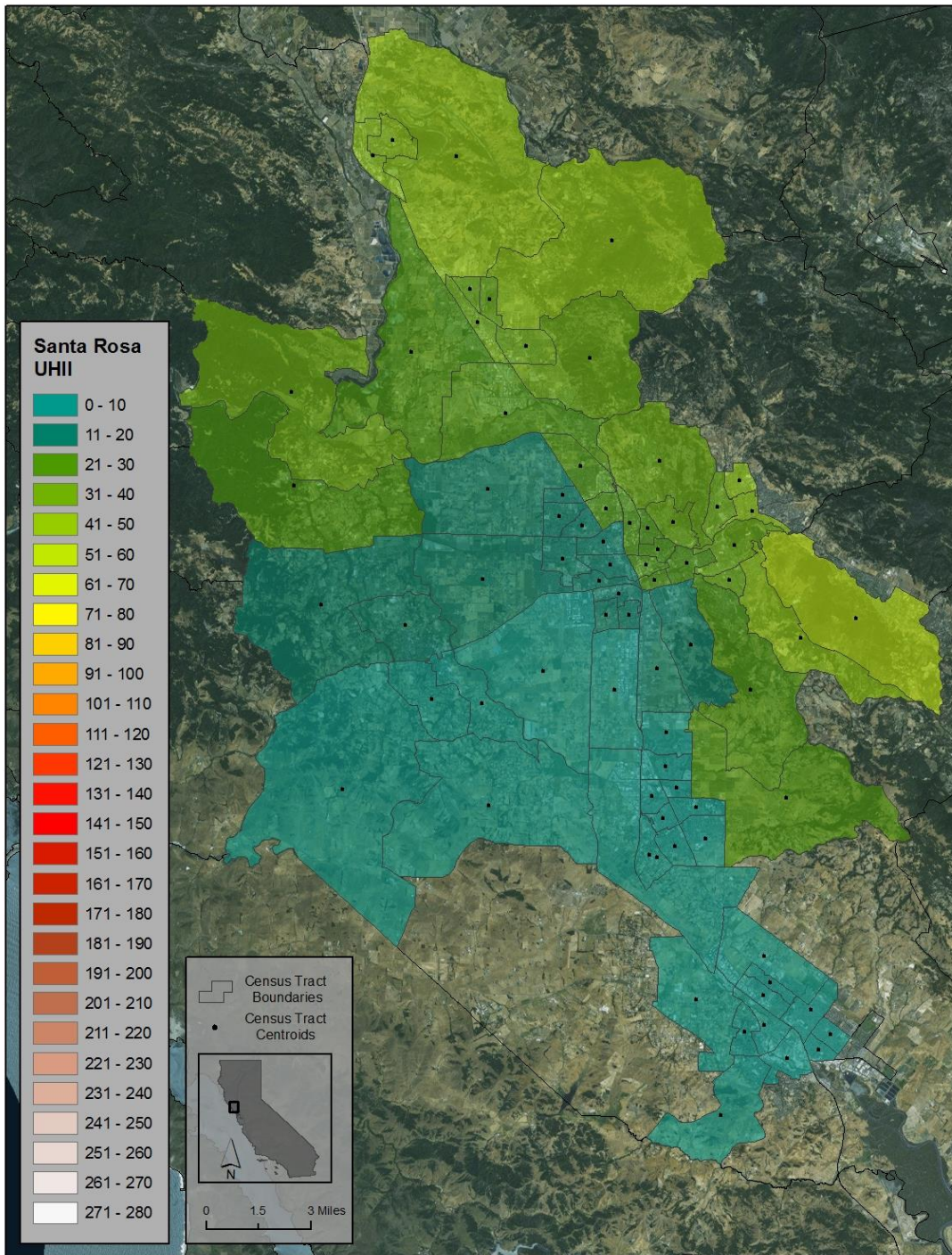


Figure D6: Rohnert Park, Santa Rosa, and Healdsburg areas UHII (DH/day). Average temperature difference between warmest and coolest census tracts is 2.4°C.

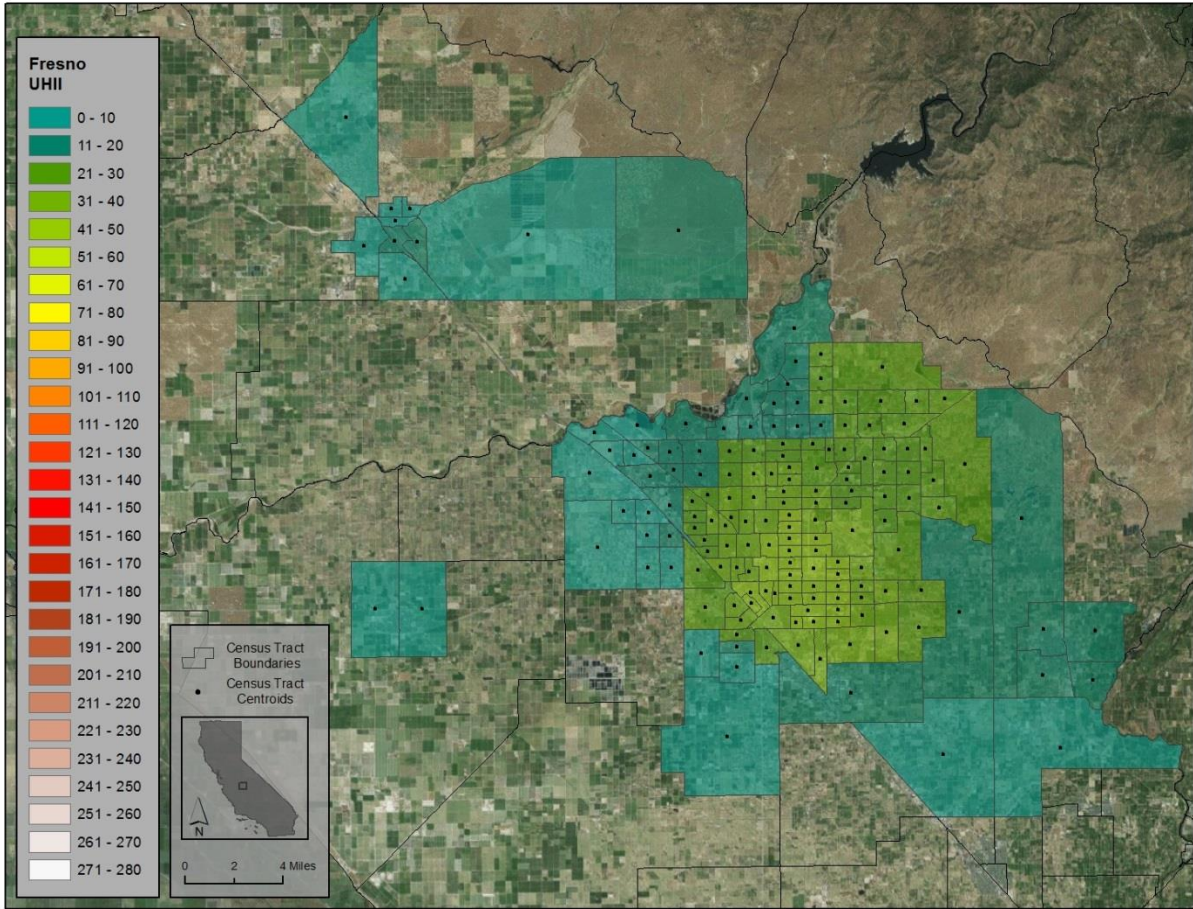


Figure D7: Fresno and Madera areas UHII (DH/day).  
Average temperature difference between warmest and coolest census tracts is 1.9°C.



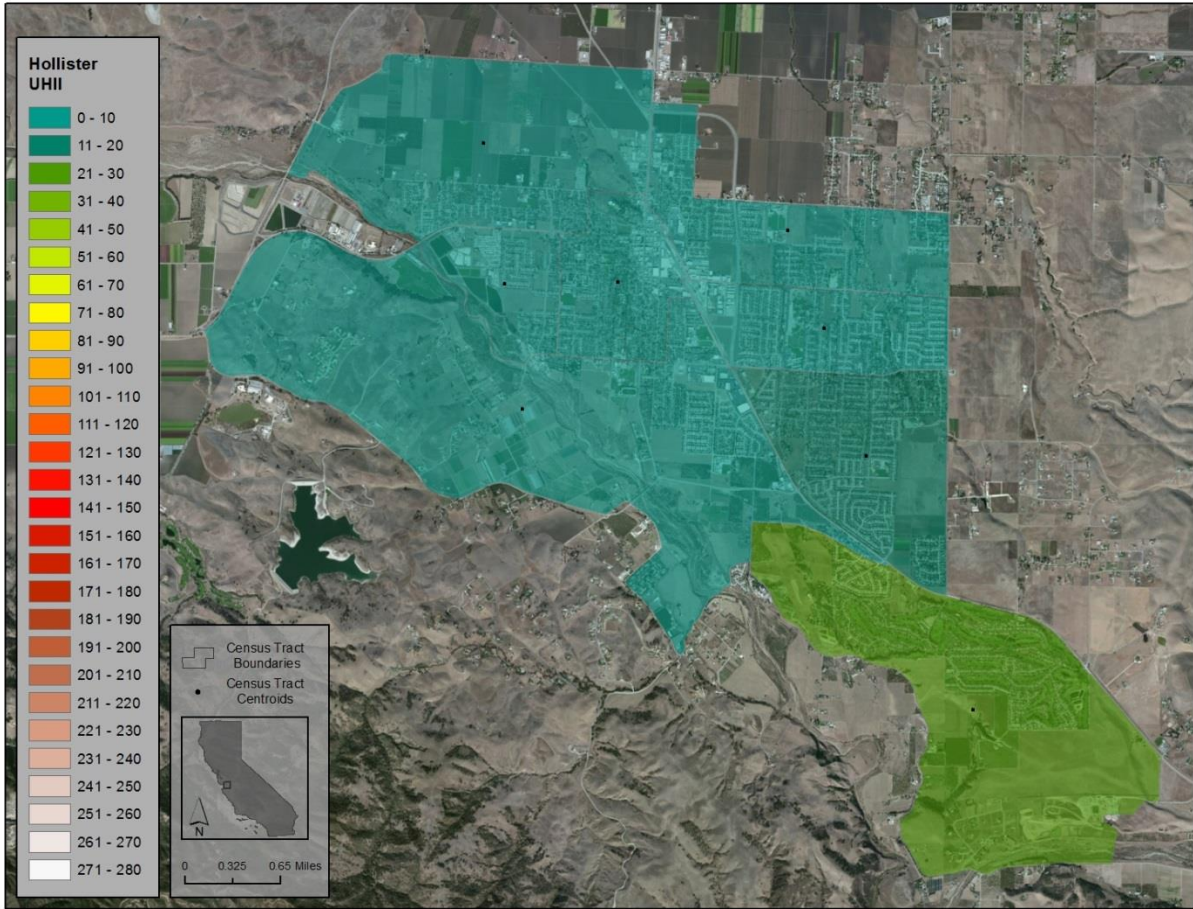


Figure D8: Hollister area UHII (DH/day).  
Average temperature difference between warmest and coolest census tracts is 1.1°C.

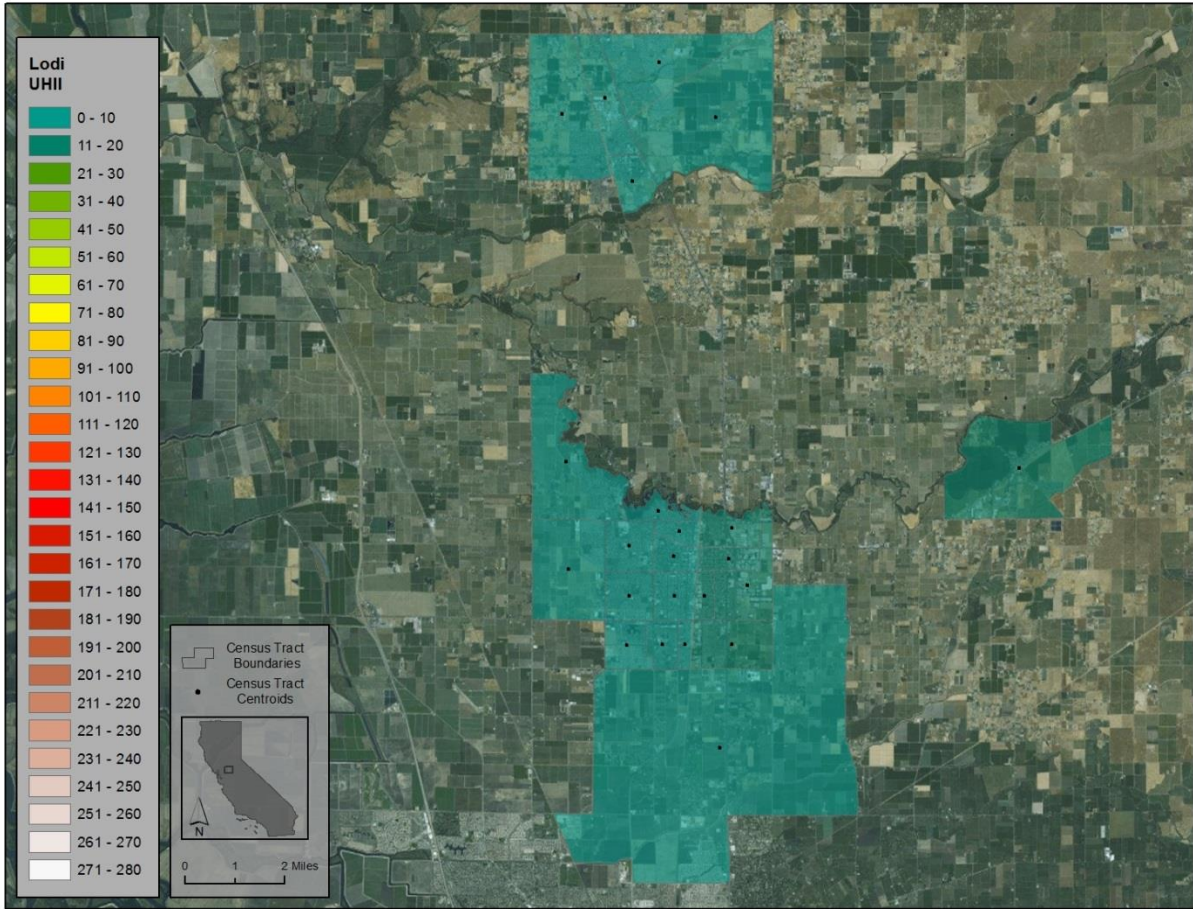


Figure D9: Lodi area UHII (DH/day).  
Average temperature difference between warmest and coolest census tracts is 0.7°C.

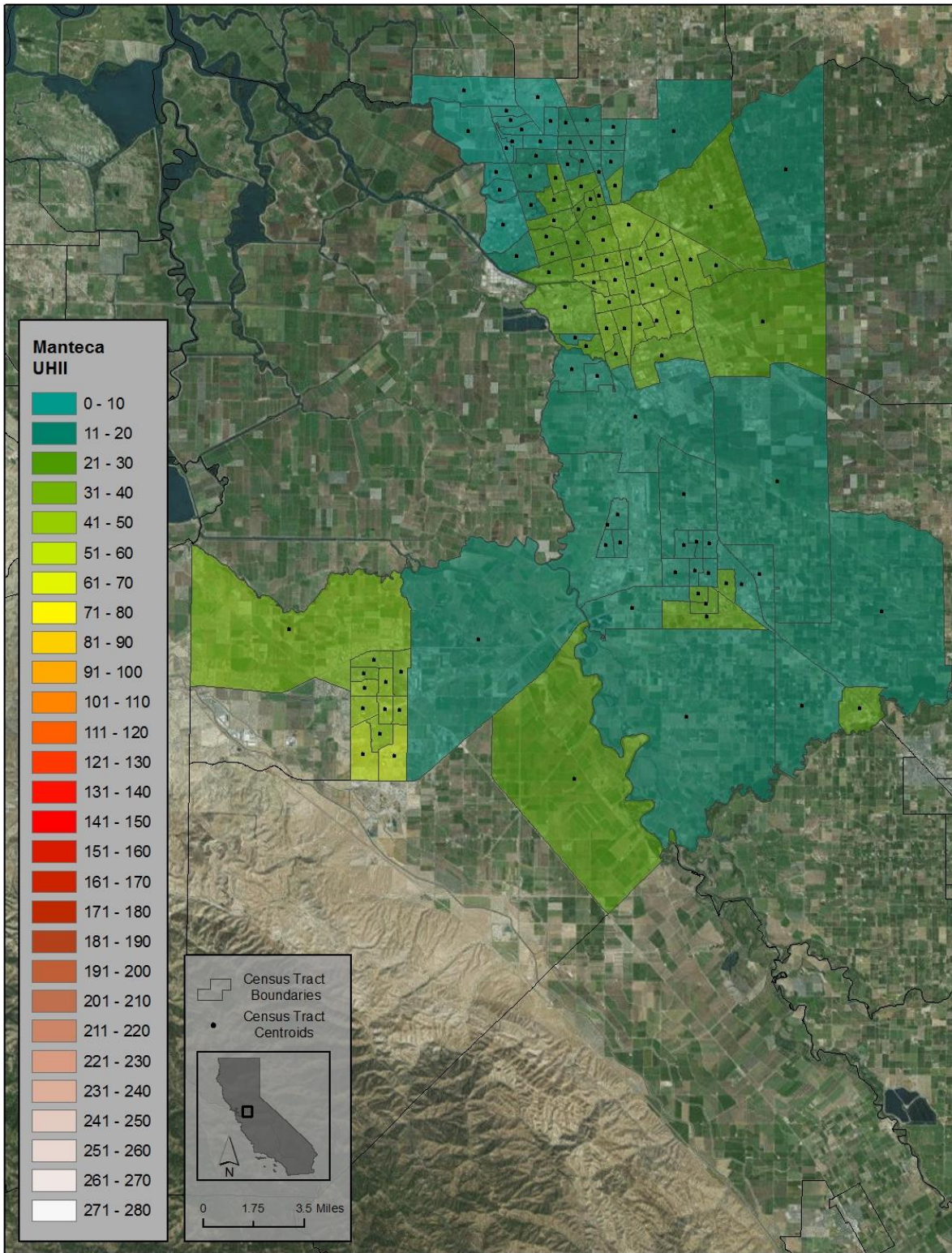


Figure D10: Stockton, Manteca, and Tracy areas UHII (DH/day).  
 Average temperature difference between warmest and coolest census tracts is 2.2°C.

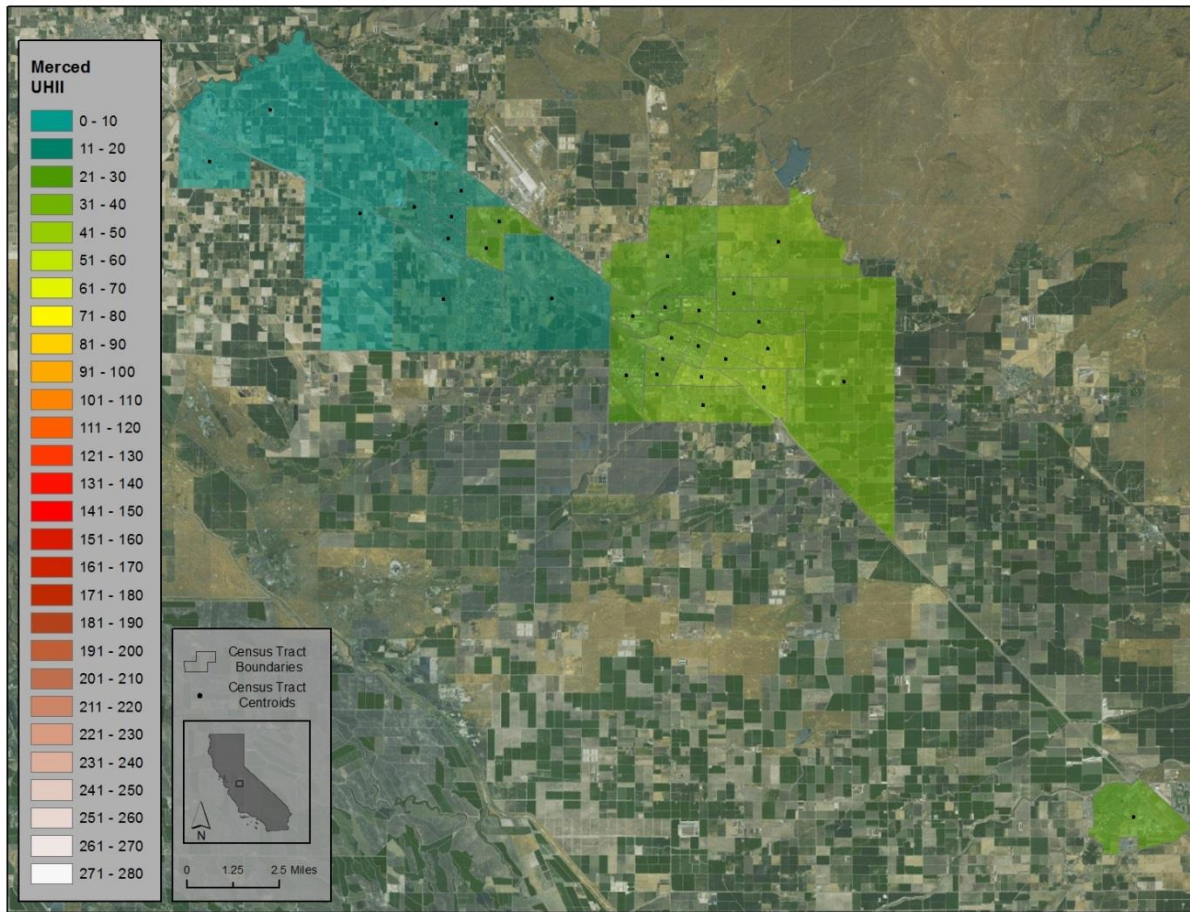


Figure D11: Merced area UHII (DH/day).  
 Average temperature difference between warmest and coolest census tracts is 1.7°C.

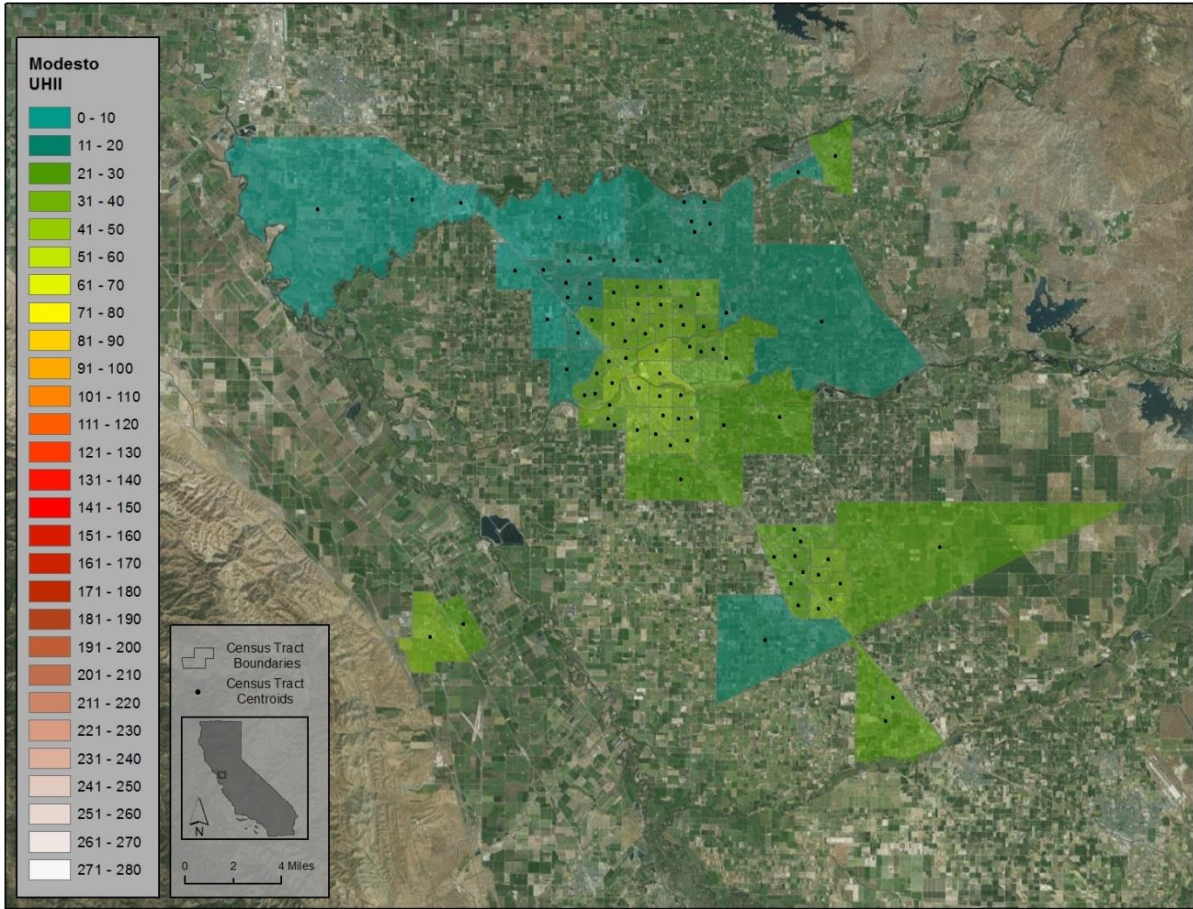


Figure D12: Modesto, Turlock, and Patterson areas UHII (DH/day).  
 Average temperature difference between warmest and coolest census tracts is 1.8°C.

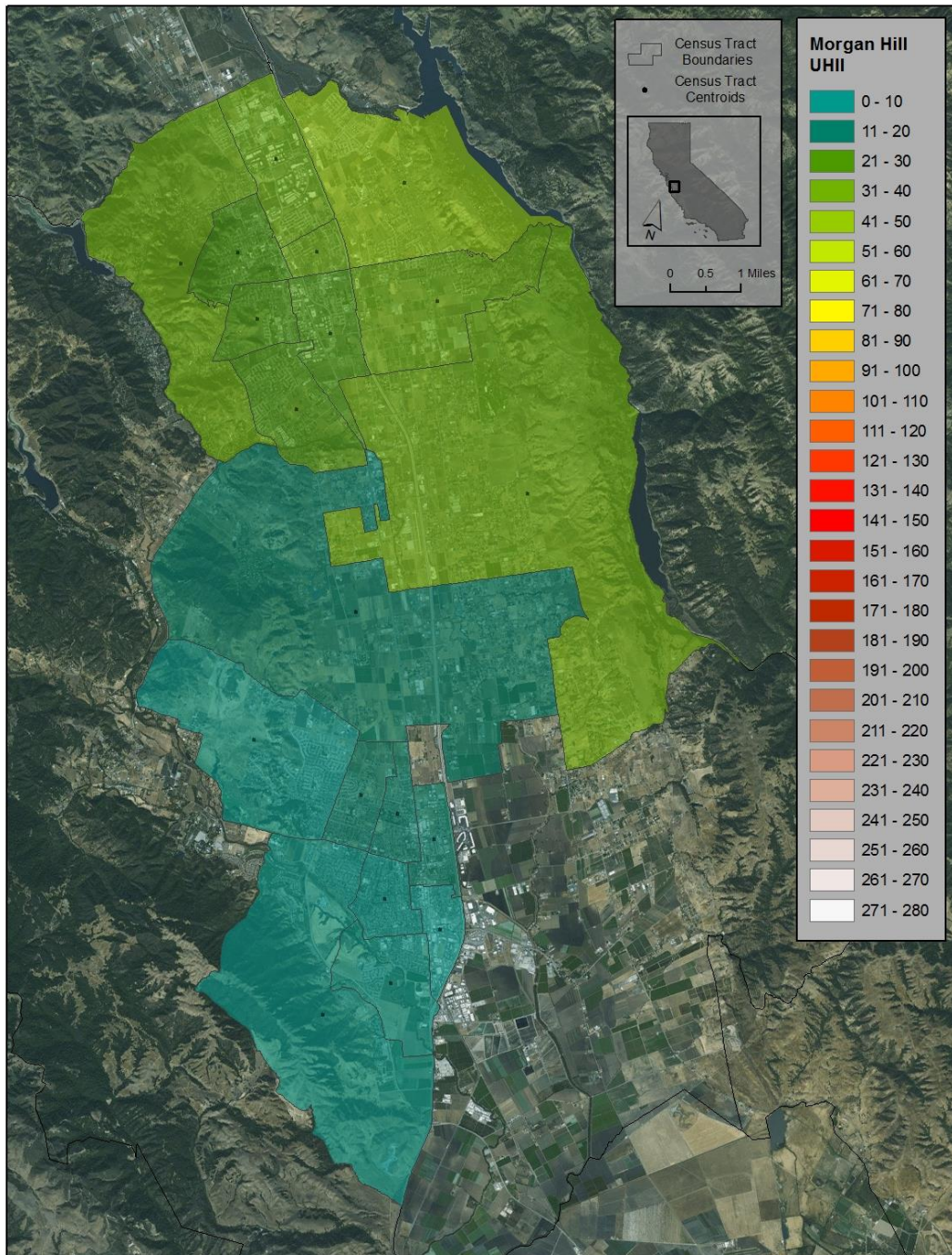


Figure D13: Morgan Hill and Gilroy areas UHII (DH/day).  
 Average temperature difference between warmest and coolest census tracts is 1.5°C.

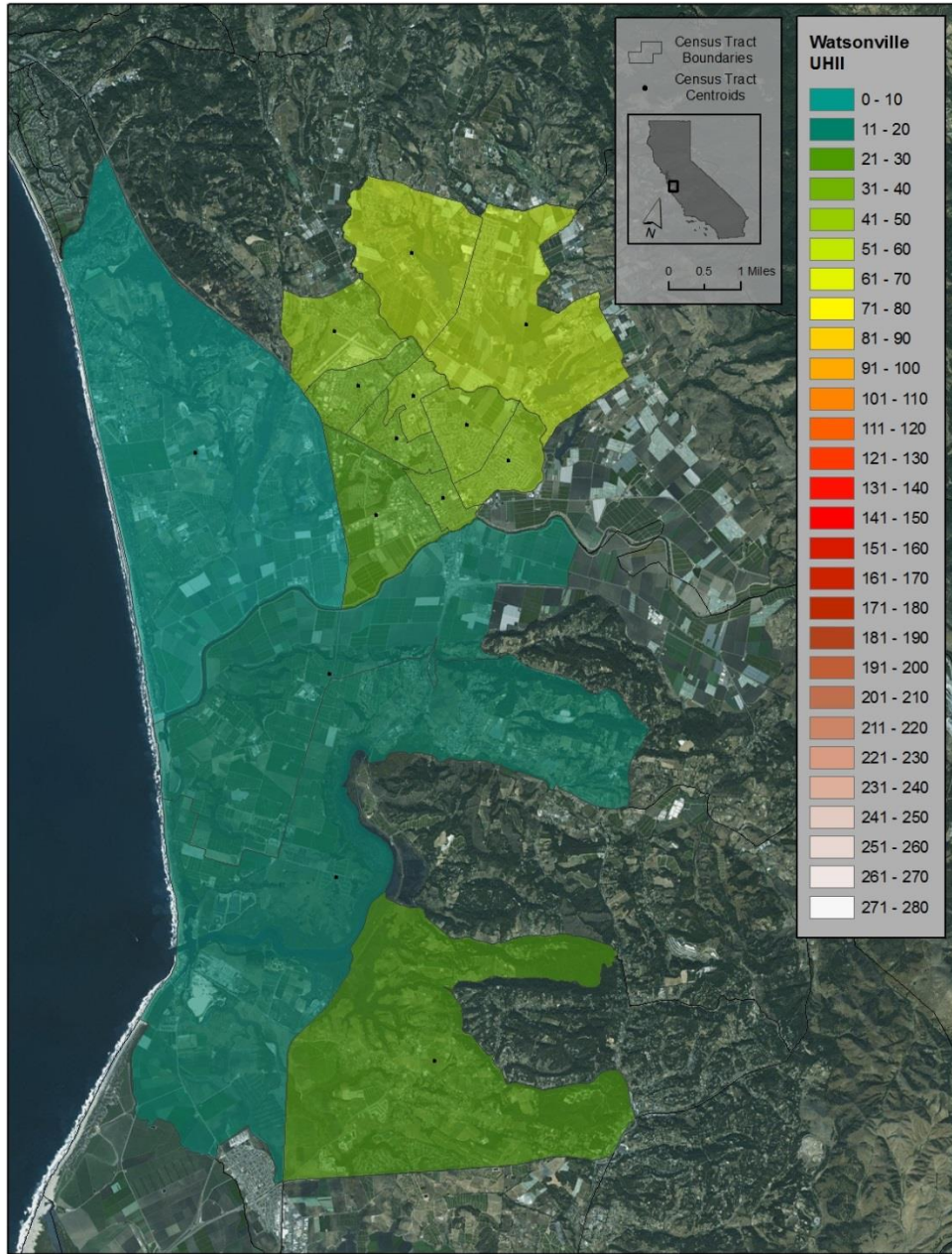


Figure D14: Watsonville and Moss Landing areas UHII (DH/day).  
 Average temperature difference between warmest and coolest census tracts is 2.1°C.

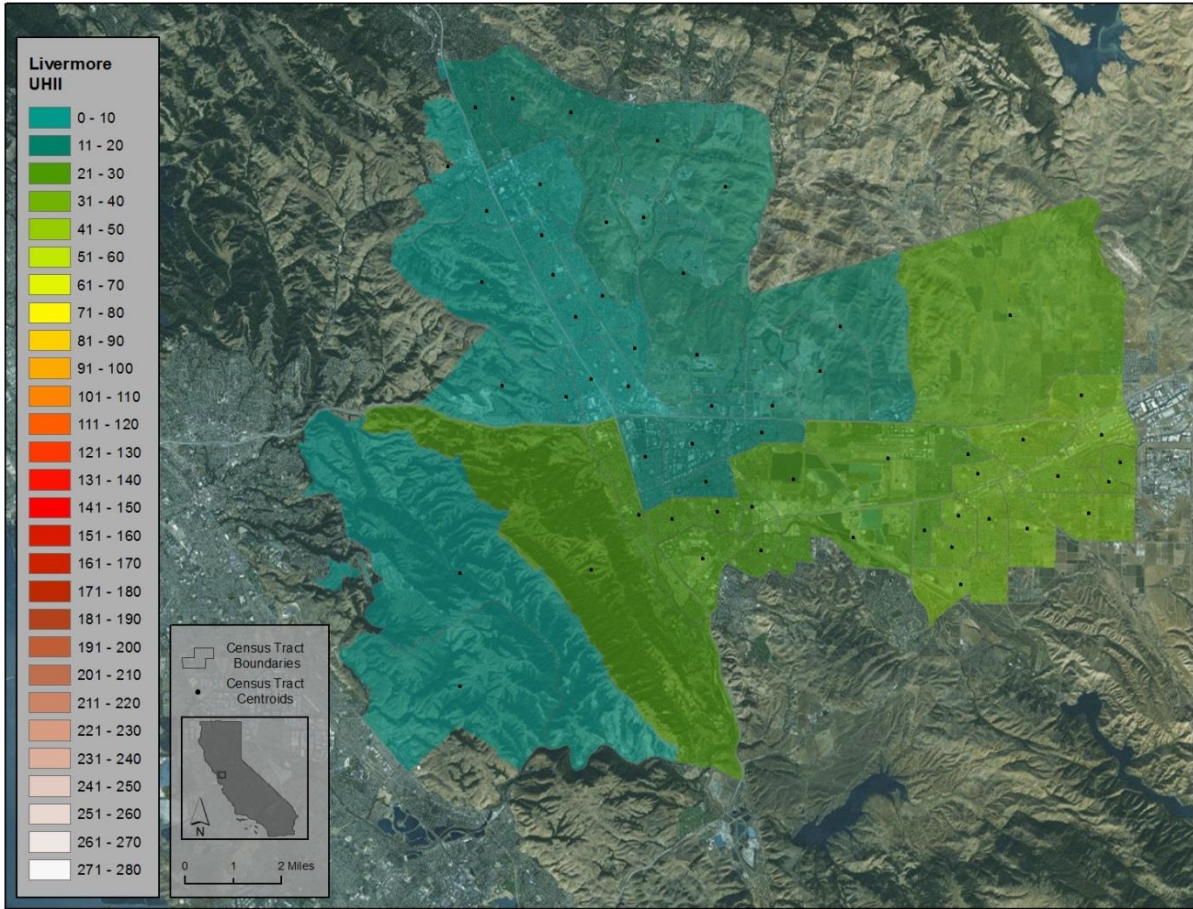


Figure D15: San Ramon, Dublin, and Livermore areas UHII (DH/day).  
 Average temperature difference between warmest and coolest census tracts is 1.6°C.



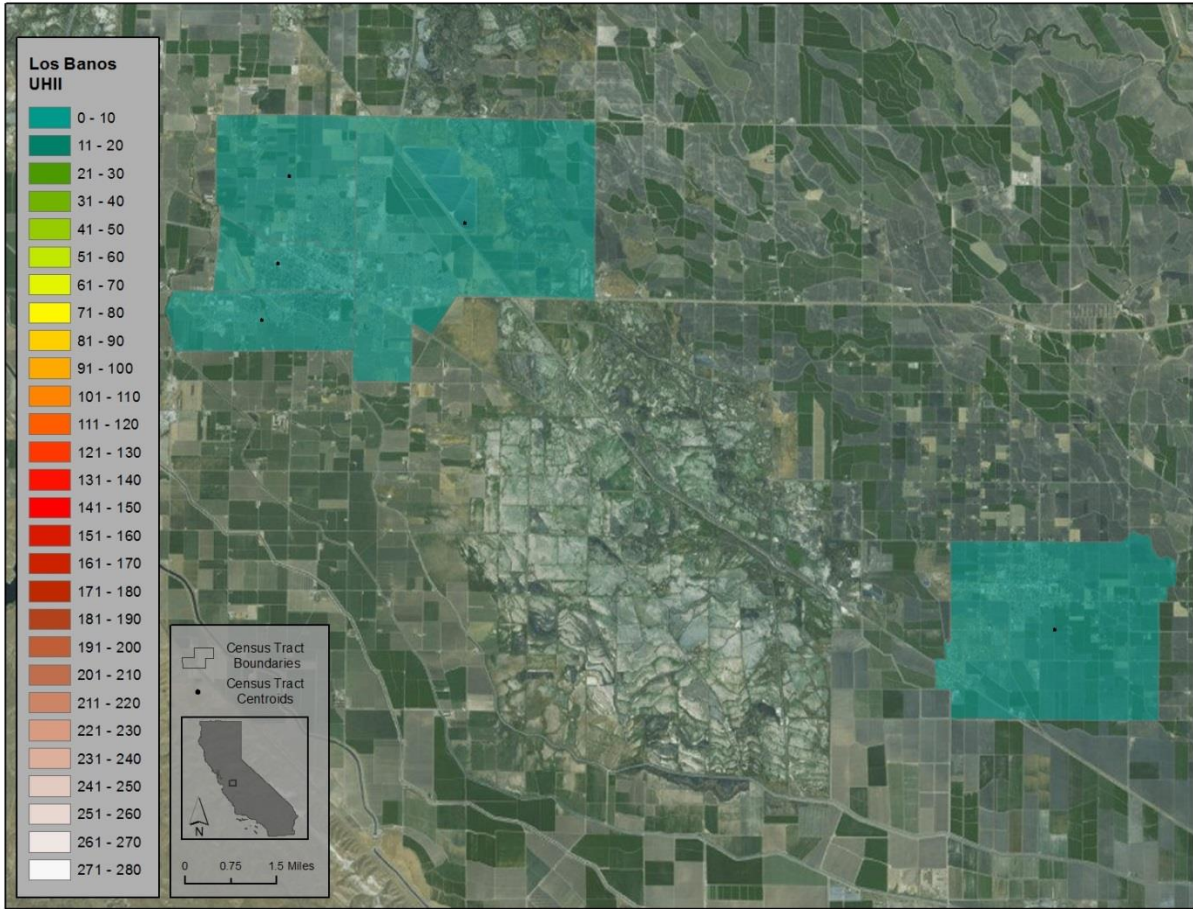


Figure D16: Los Banos and Dos Palos UHII (DH/day).  
Average temperature difference between warmest and coolest census tracts is 0.2°C.

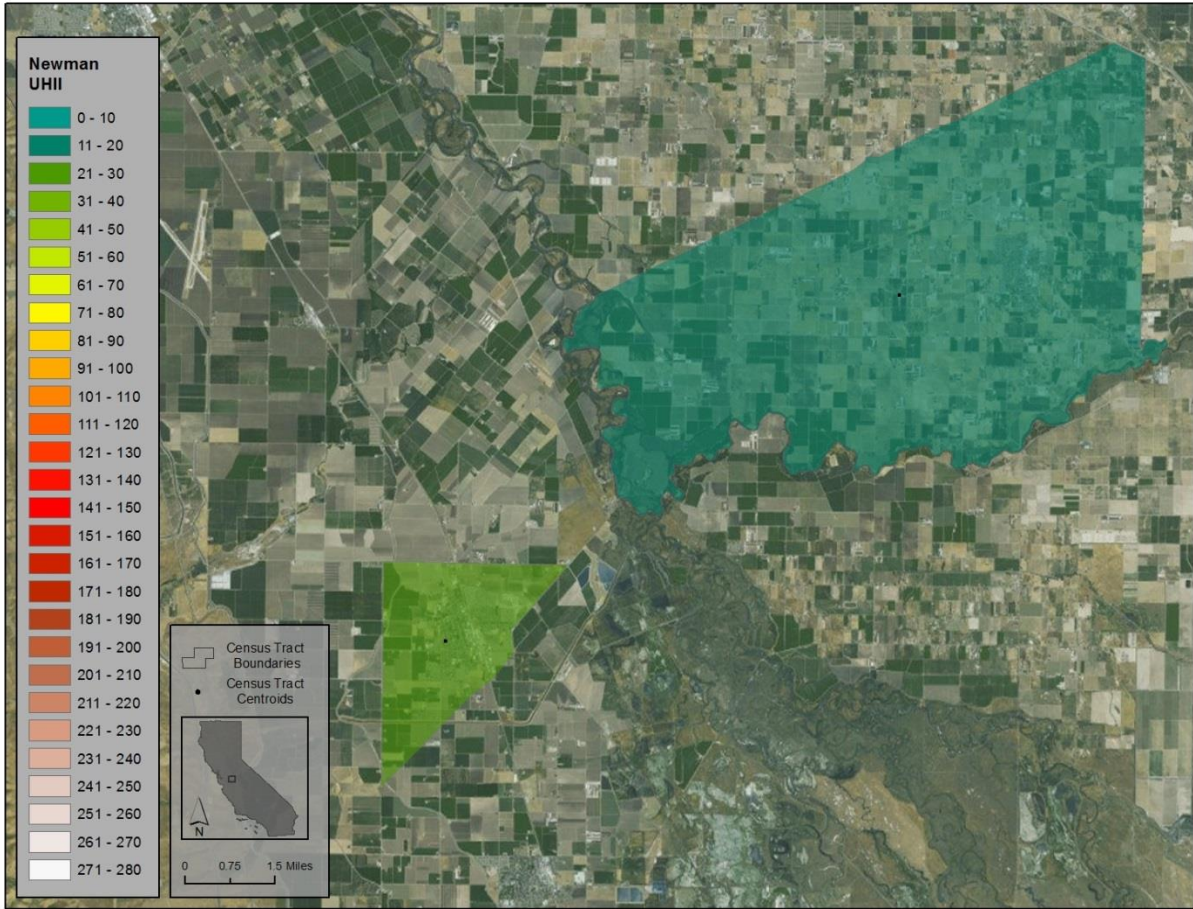


Figure D17: Newman and Hilmar areas UHII (DH/day).  
 Average temperature difference between warmest and coolest census tracts is 0.3°C.

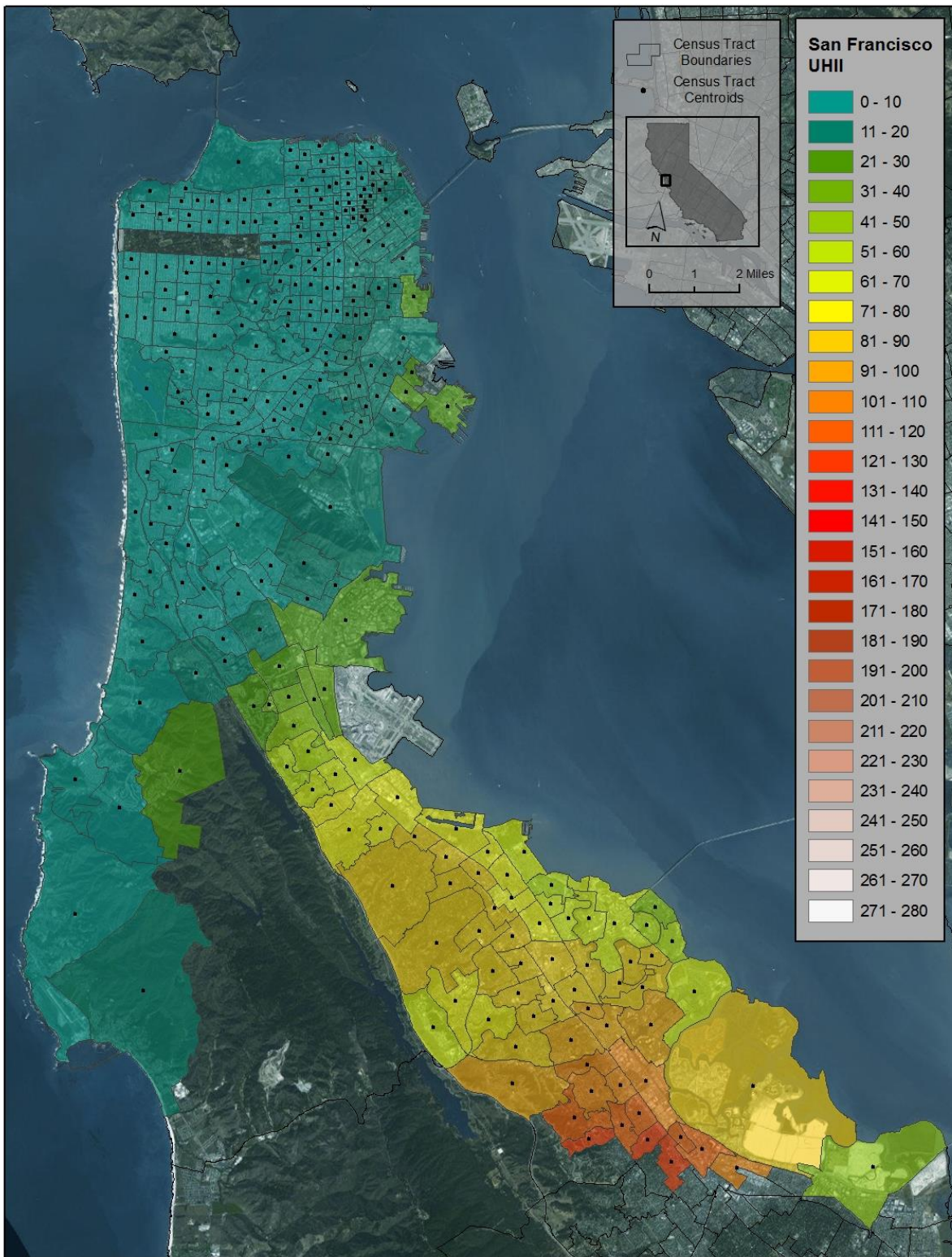


Figure D18: San Francisco peninsula UHII (DH/day).  
Average temperature difference between warmest and coolest census tracts is 5.0°C.

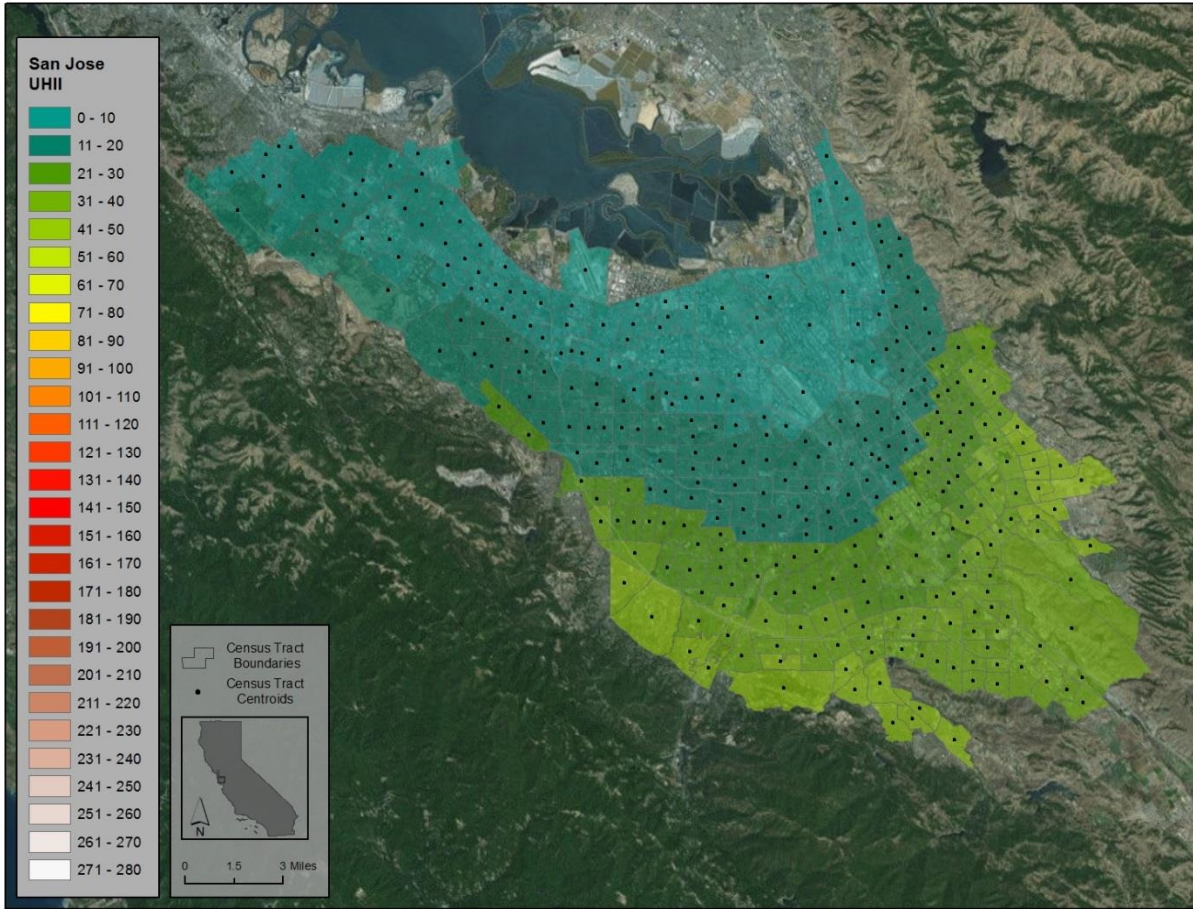


Figure D19: San Jose and South Bay areas UHII (DH/day).  
 Average temperature difference between warmest and coolest census tracts is 2.0°C.

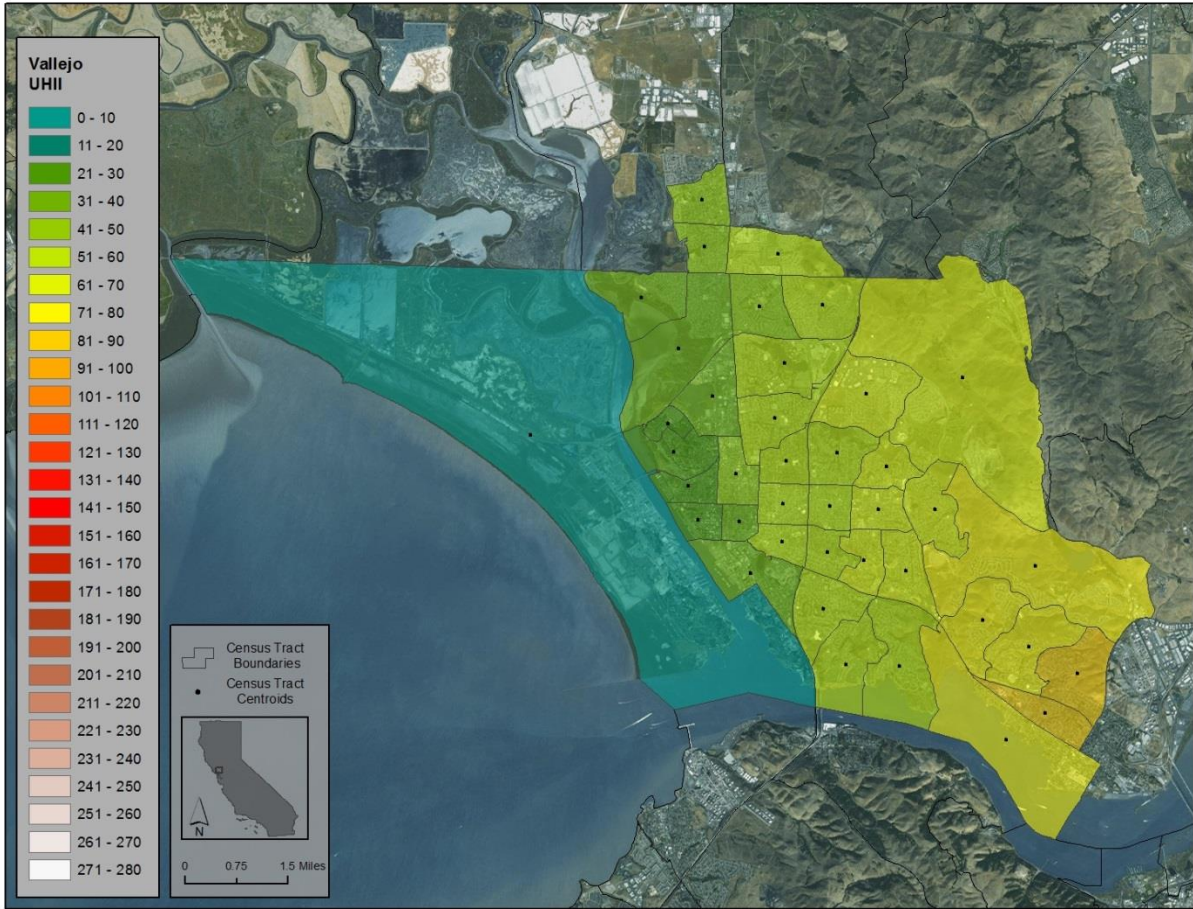


Figure D20: Vallejo area UHII (DH/day).  
Average temperature difference between warmest and coolest census tracts is 3.4°C.

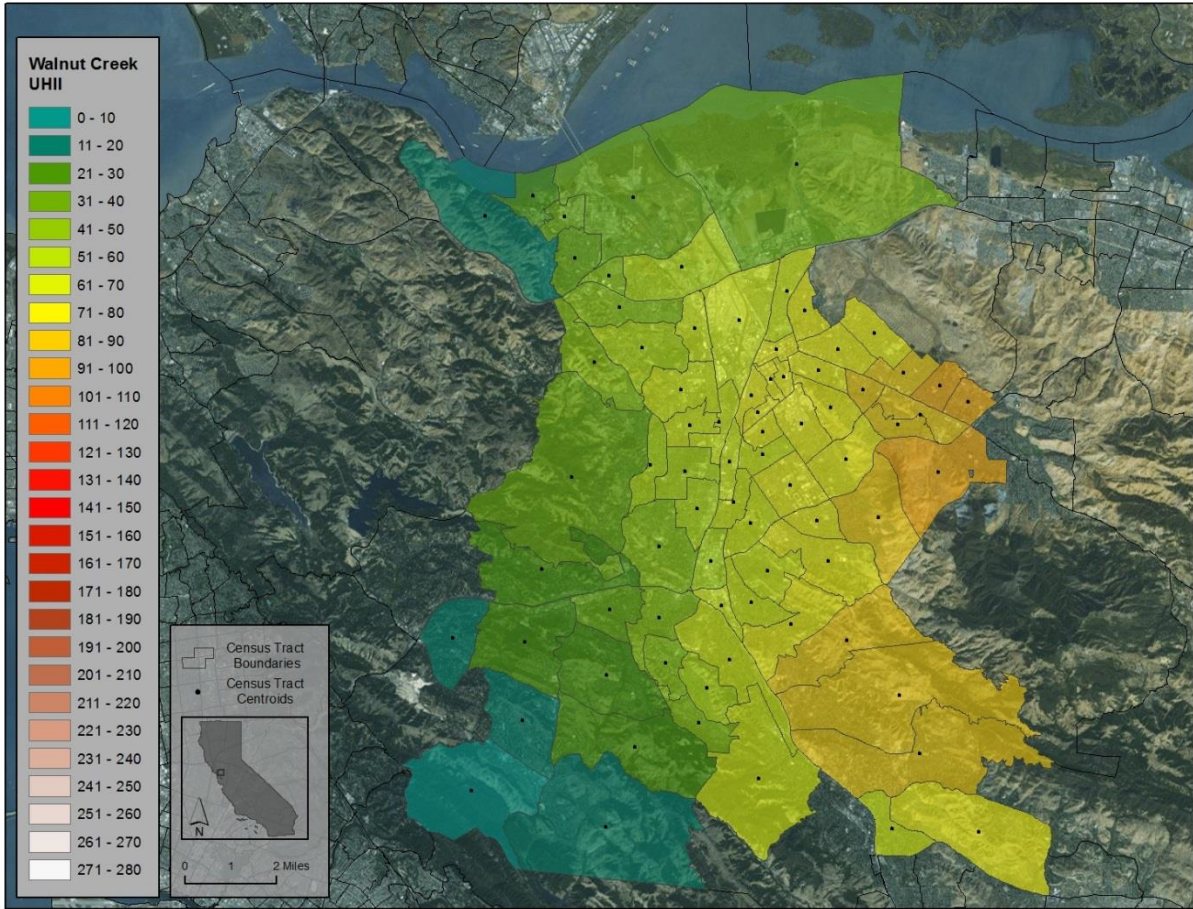


Figure D21: Martinez, Concord, Pleasant Hill, and Walnut Creek areas UHII (DH/day). Average temperature difference between warmest and coolest census tracts is 3.9°C.

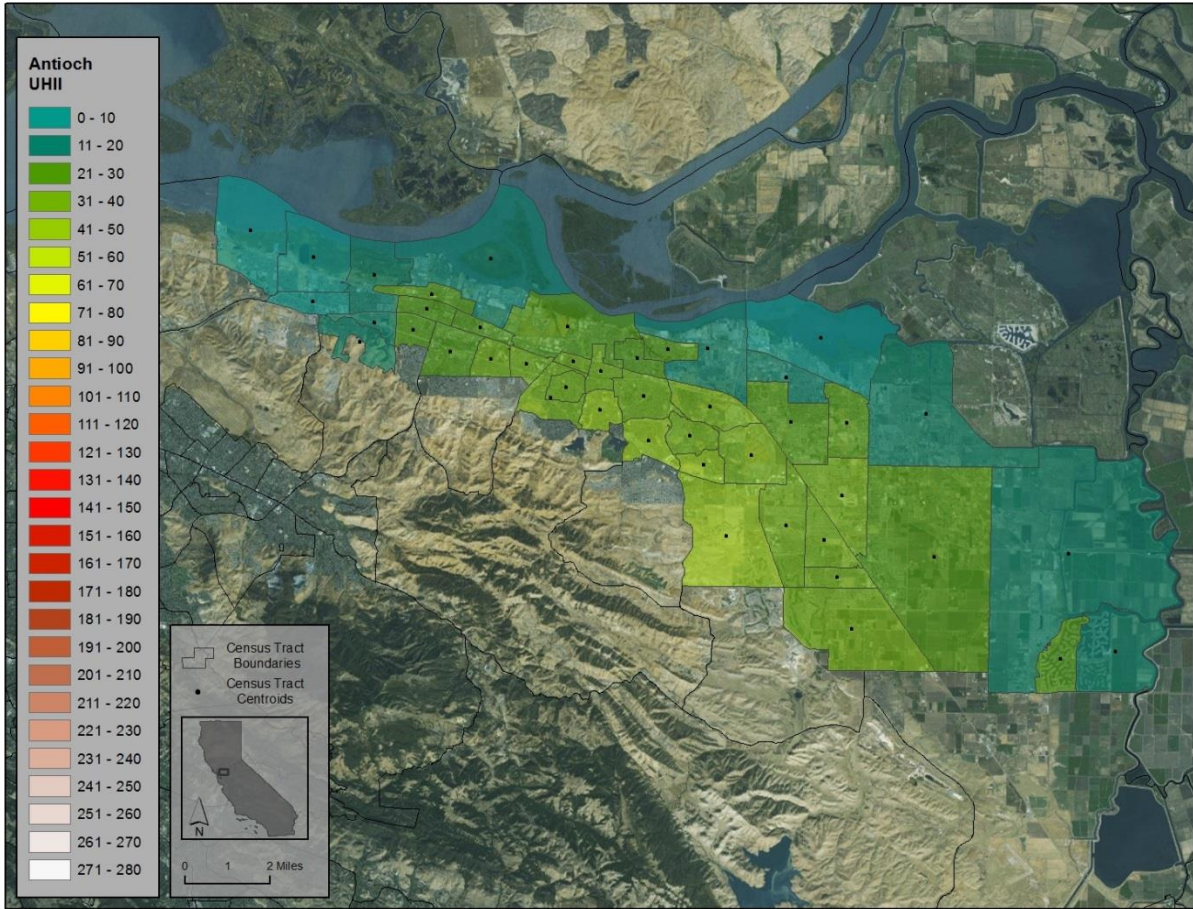


Figure D22: Antioch area UHII (DH/day).  
 Average temperature difference between warmest and coolest census tracts is 1.9°C.

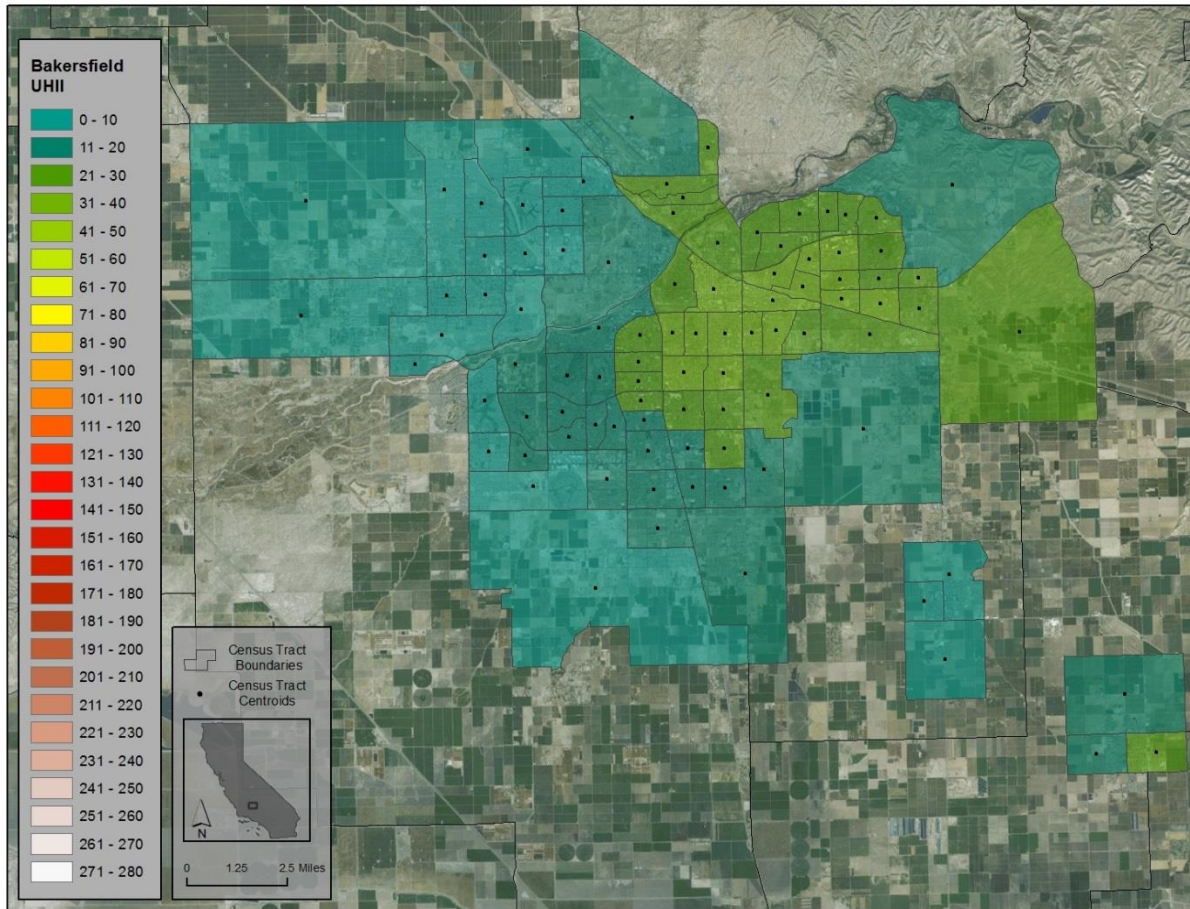


Figure D23: Bakersfield area UHII (DH/day).  
 Average temperature difference between warmest and coolest census tracts is 1.4°C.



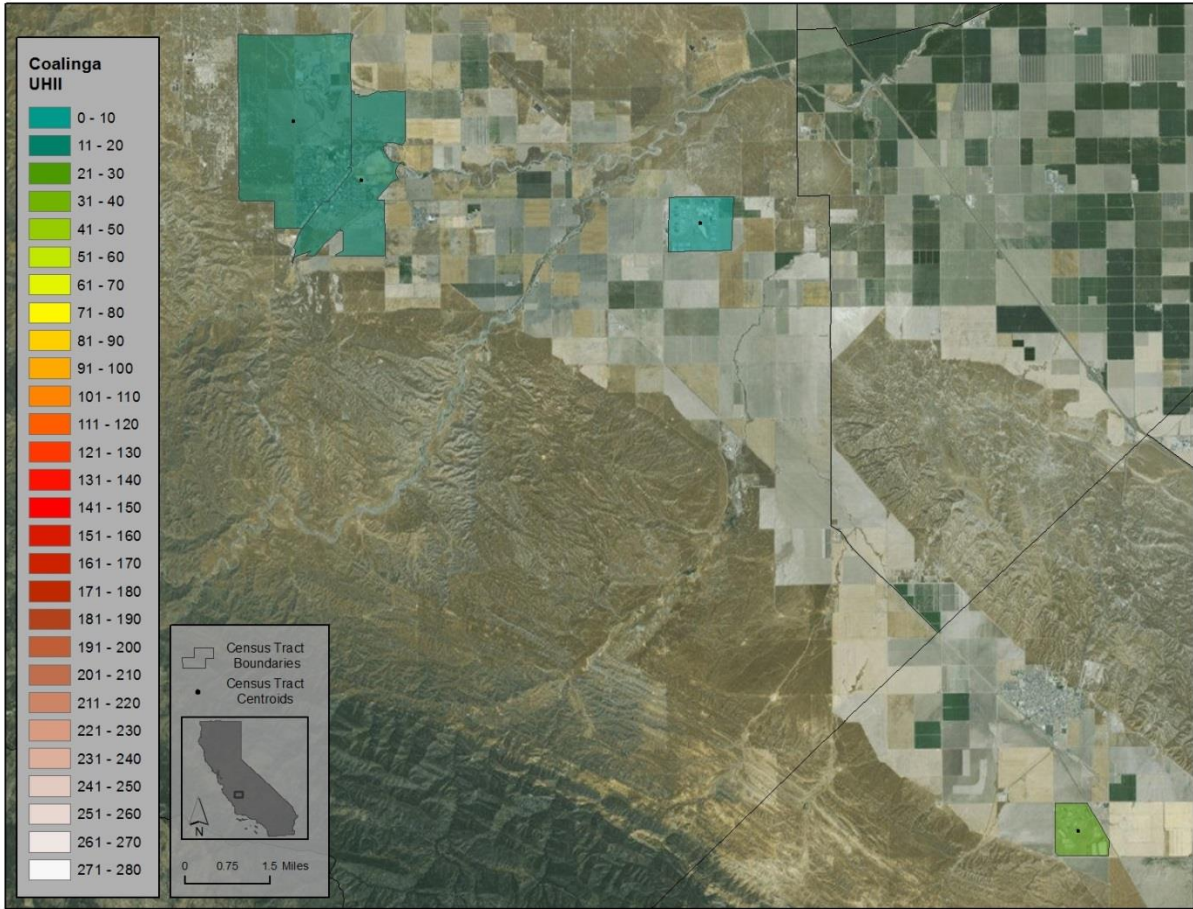


Figure D24: Coalinga and Avenal areas UHII (DH/day).  
 Average temperature difference between warmest and coolest census tracts is 0.9°C.

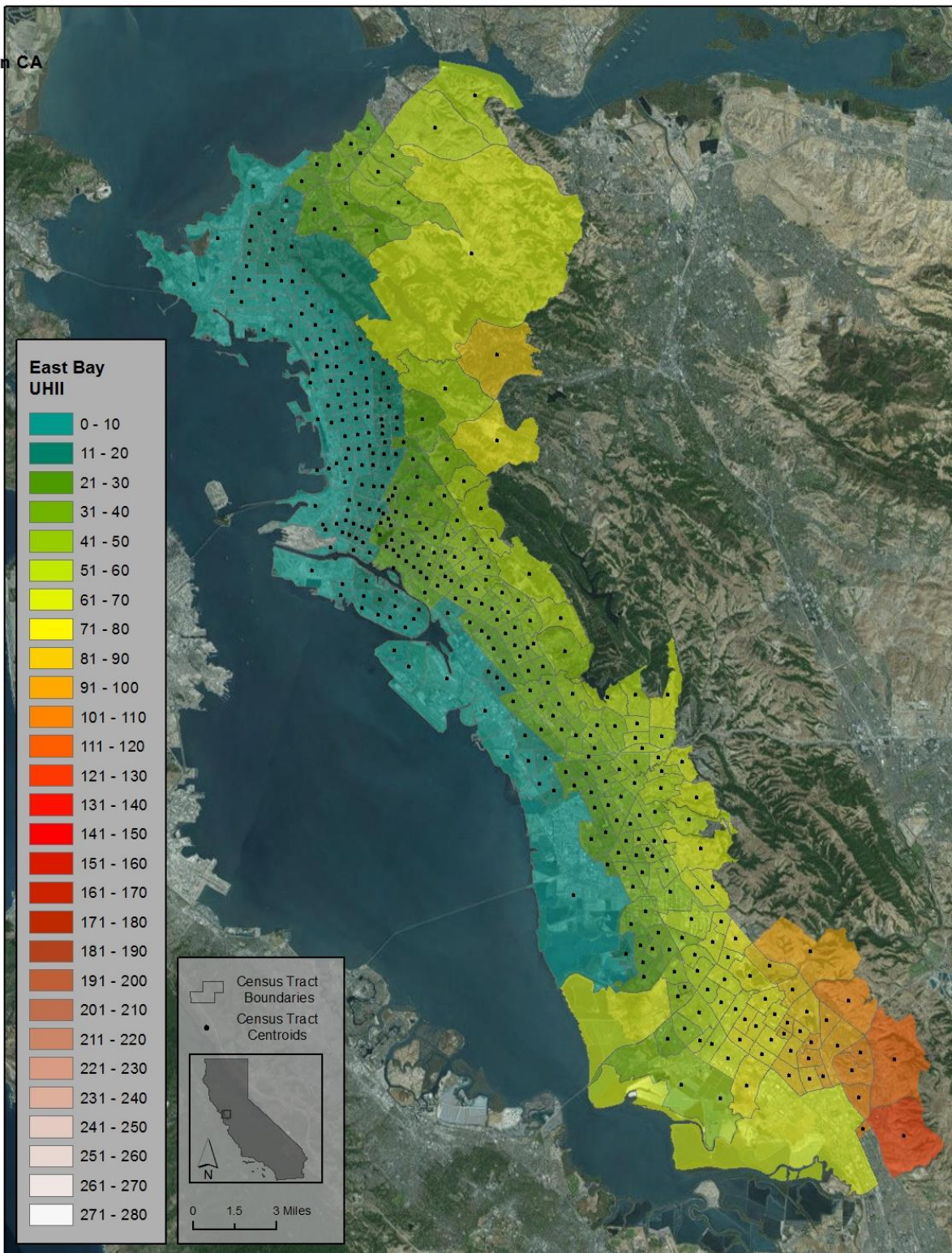


Figure D25: East Bay area UHII (DH/day).  
Average temperature difference between warmest and coolest census tracts is 5.0°C.

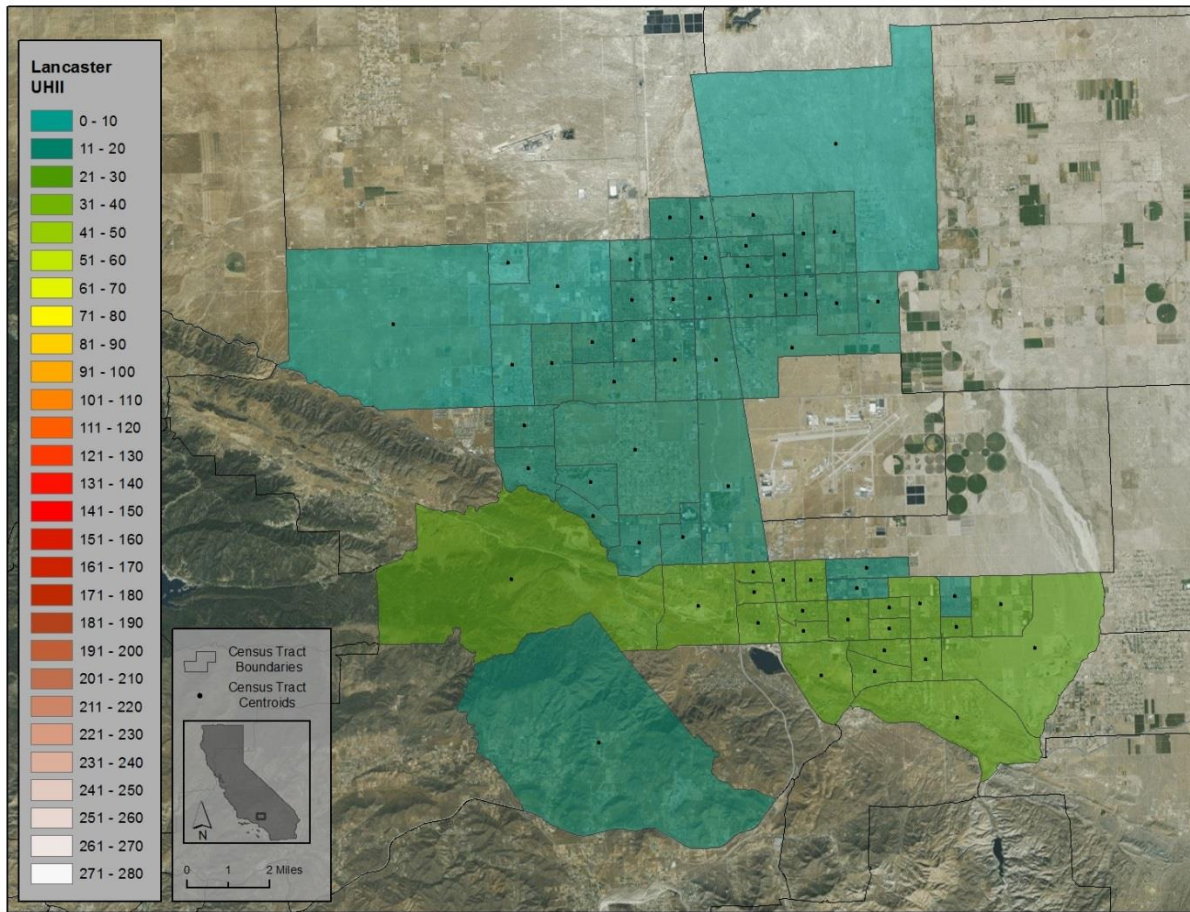


Figure D26: Lancaster and Palmdale areas UHII (DH/day).  
 Average temperature difference between warmest and coolest census tracts is 0.9°C.

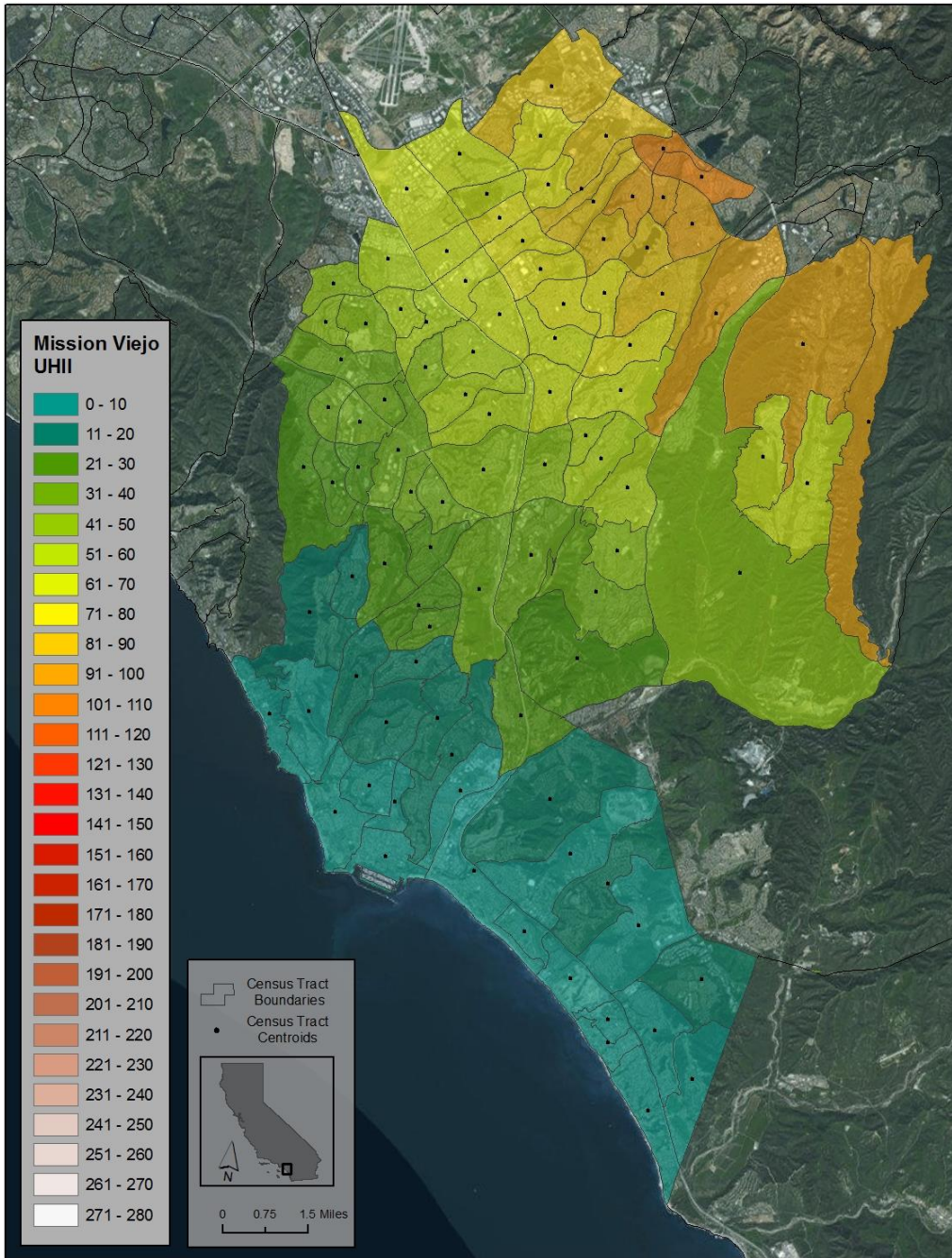


Figure D27: Mission Viejo area UHII (DH/day).  
 Average temperature difference between warmest and coolest census tracts is 4.6°C.

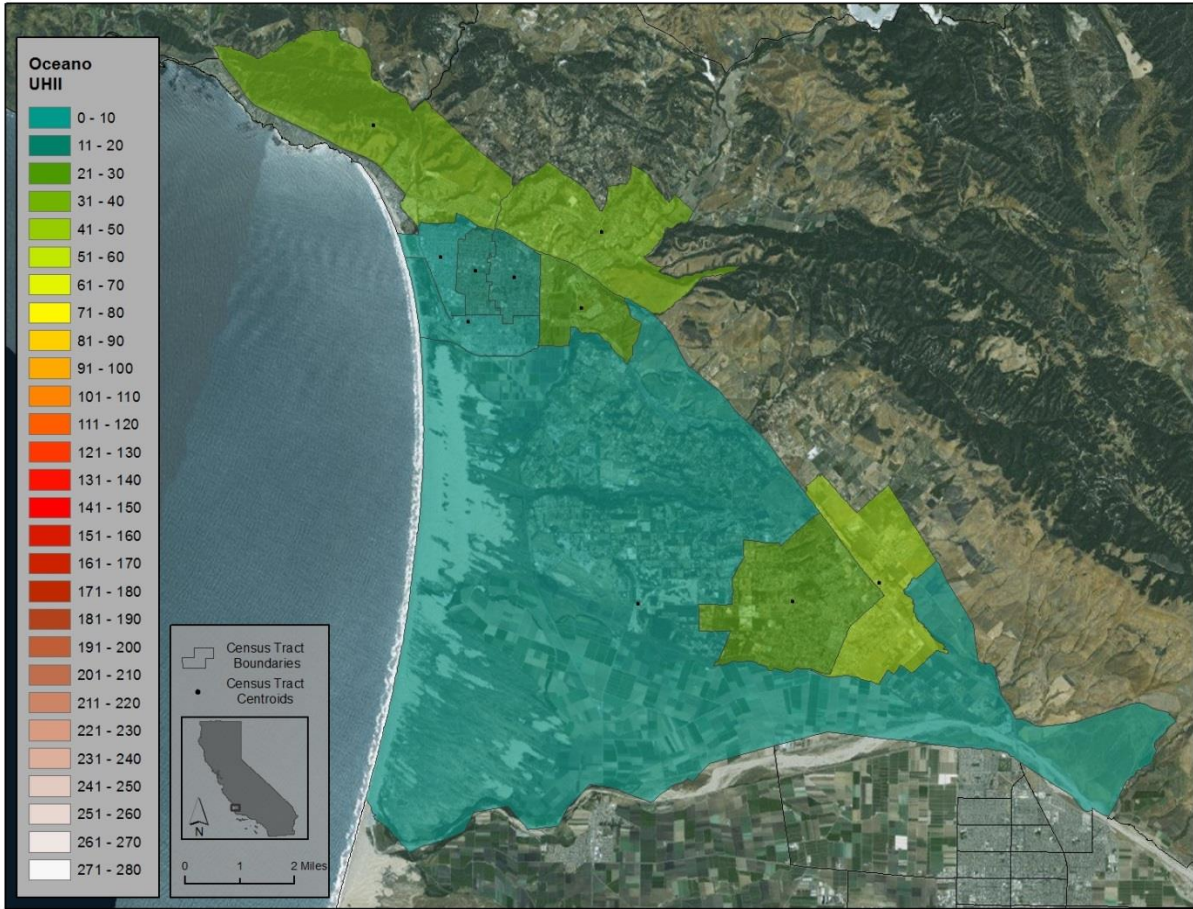


Figure D28: Pismo Beach and Oceano areas UHI (DH/day).  
 Average temperature difference between warmest and coolest census tracts is 1.5°C.

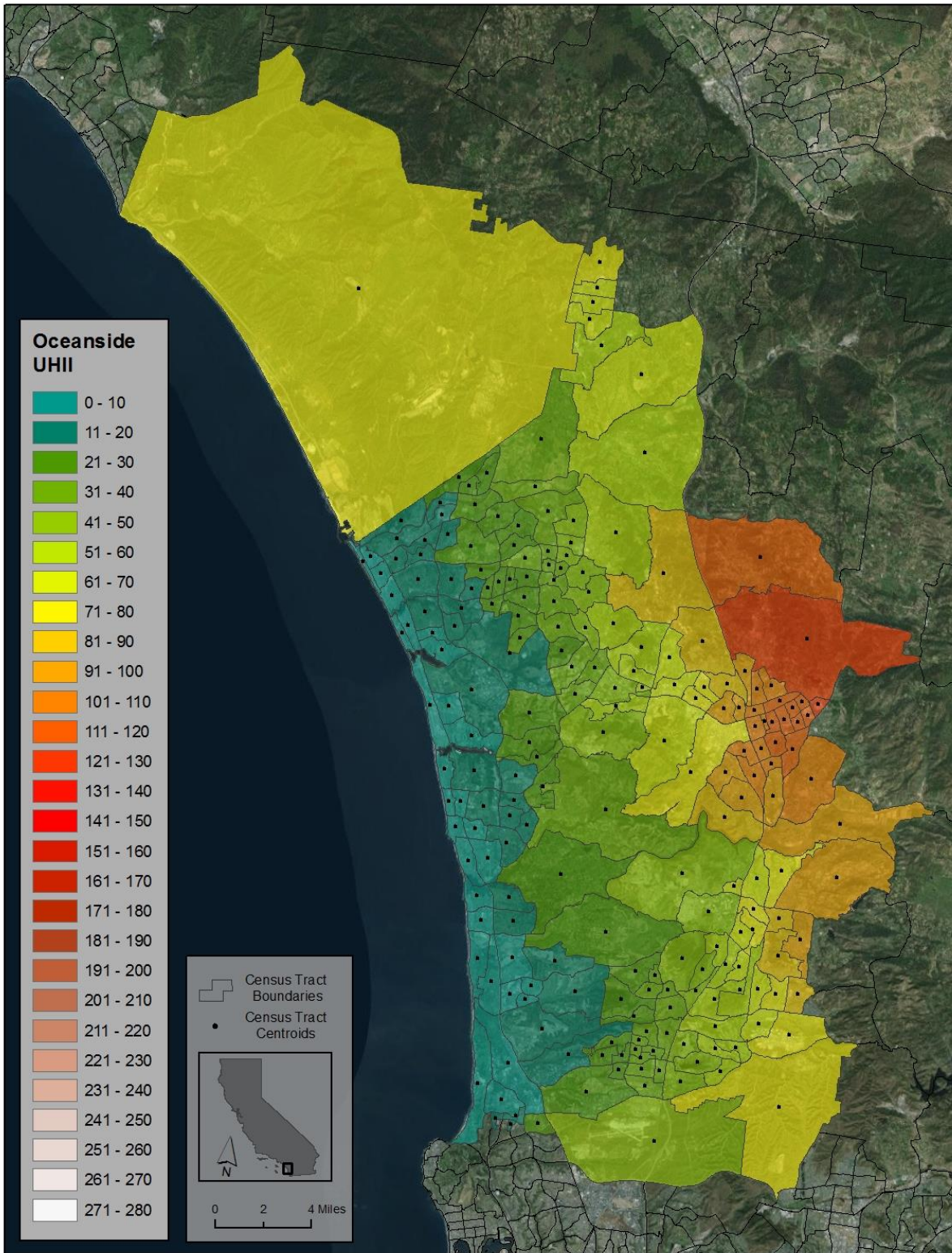


Figure D29: Oceanside area UHII (DH/day).  
Average temperature difference between warmest and coolest census tracts is 5.2°C.

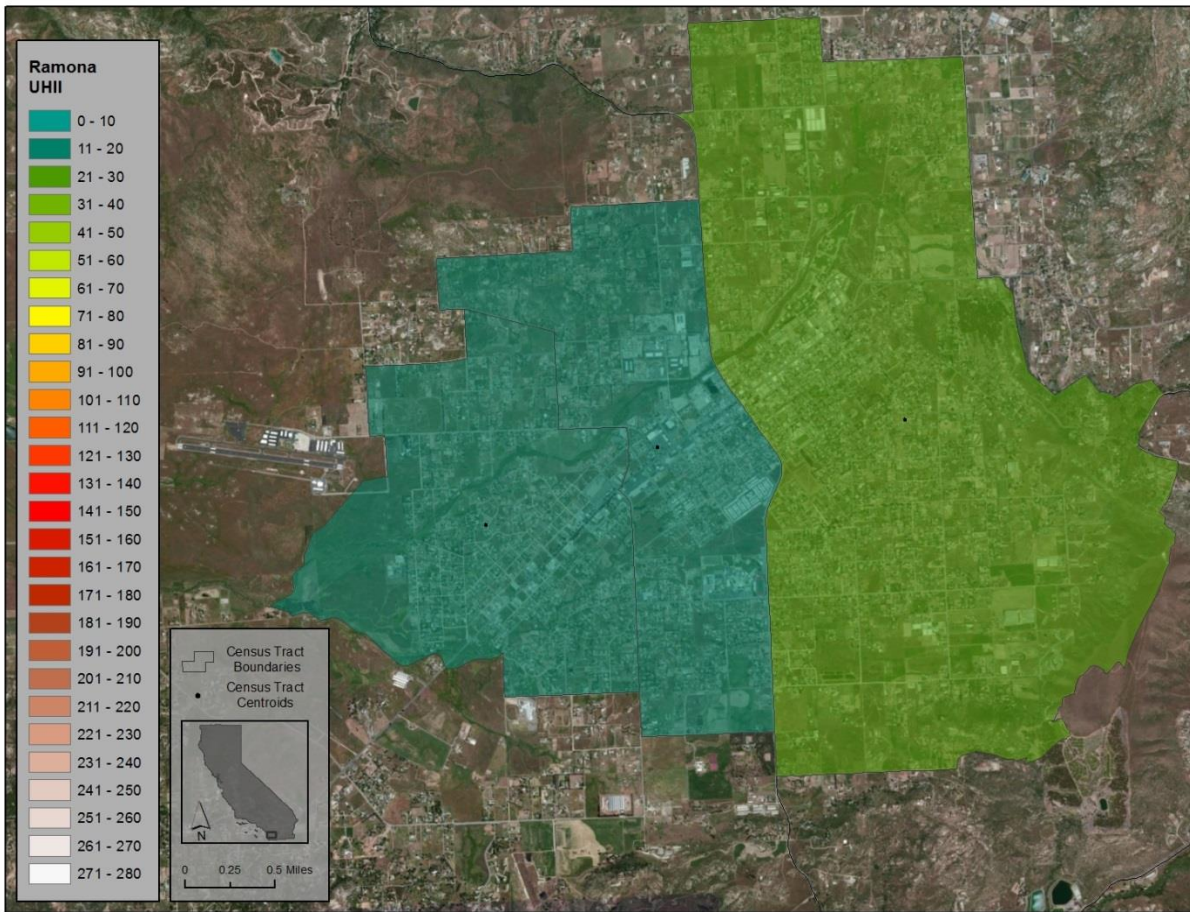


Figure D30: Ramona area UHII (DH/day).  
Average temperature difference between warmest and coolest census tracts is 0.8°C.

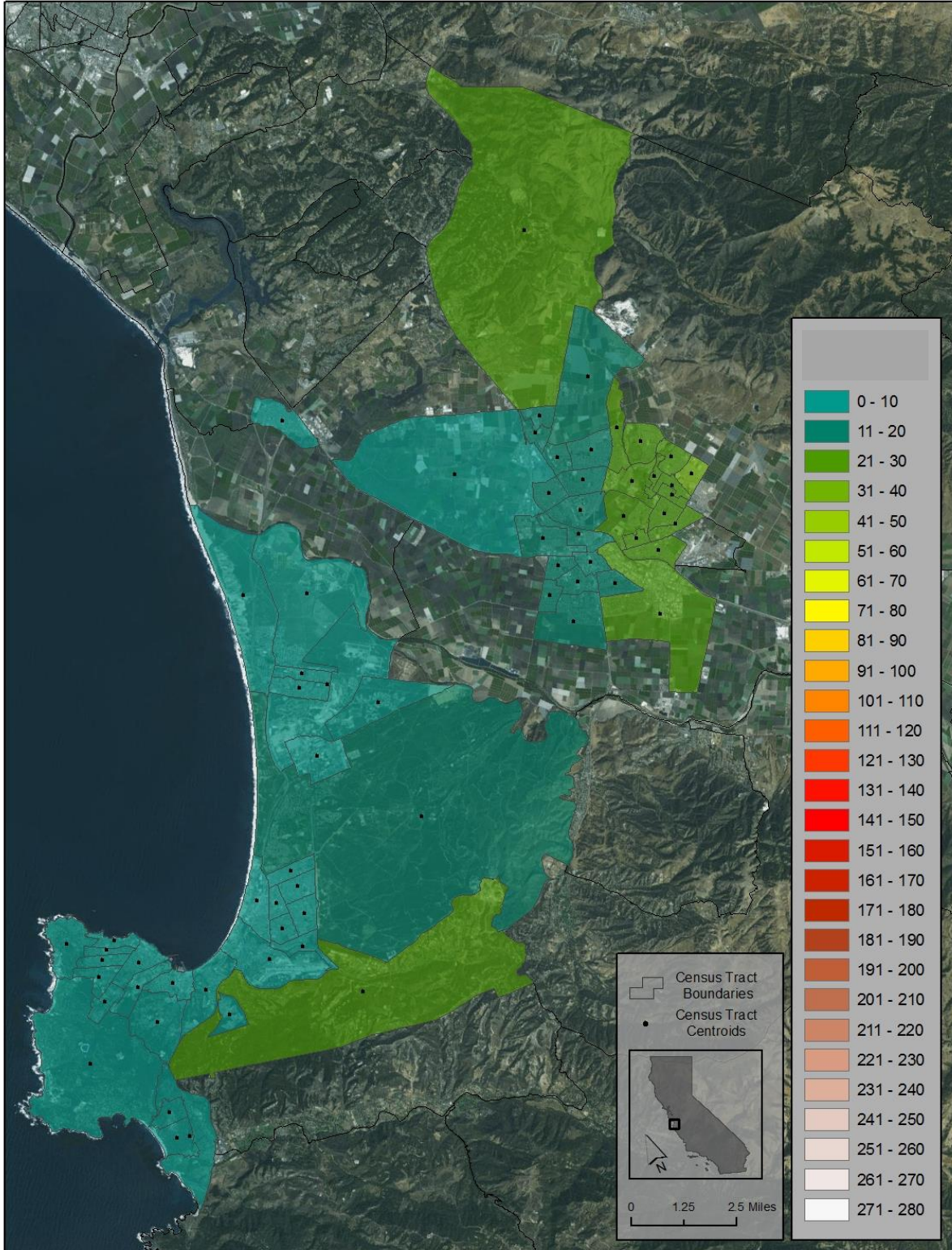


Figure D31: Monterey, Salinas, and Castroville areas UHII (DH/day). Average temperature difference between warmest and coolest census tracts is 1.2°C.



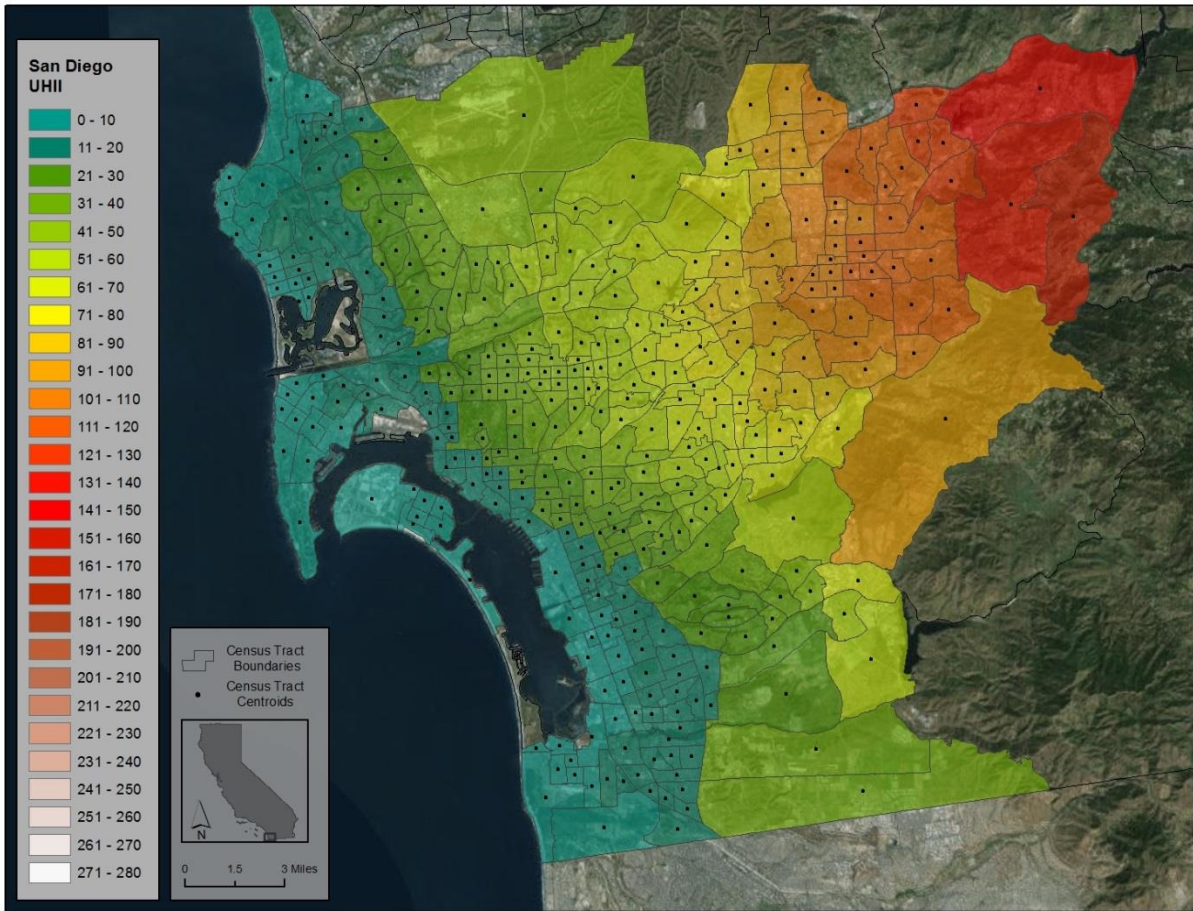


Figure D32: San Diego area UHII (DH/day).  
 Average temperature difference between warmest and coolest census tracts is 5.1°C.

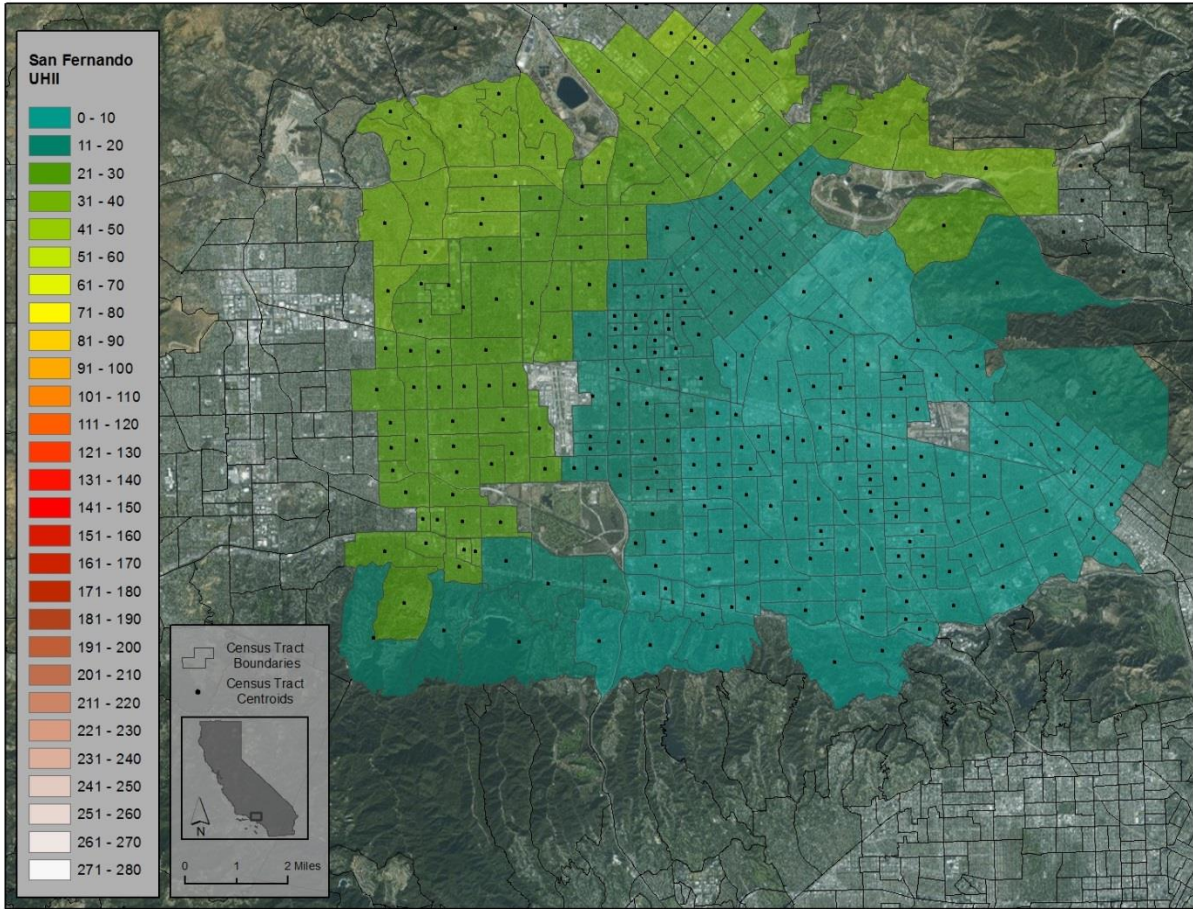


Figure D33: San Fernando Valley UHI (DH/day).  
 Average temperature difference between warmest and coolest census tracts is 1.7°C.

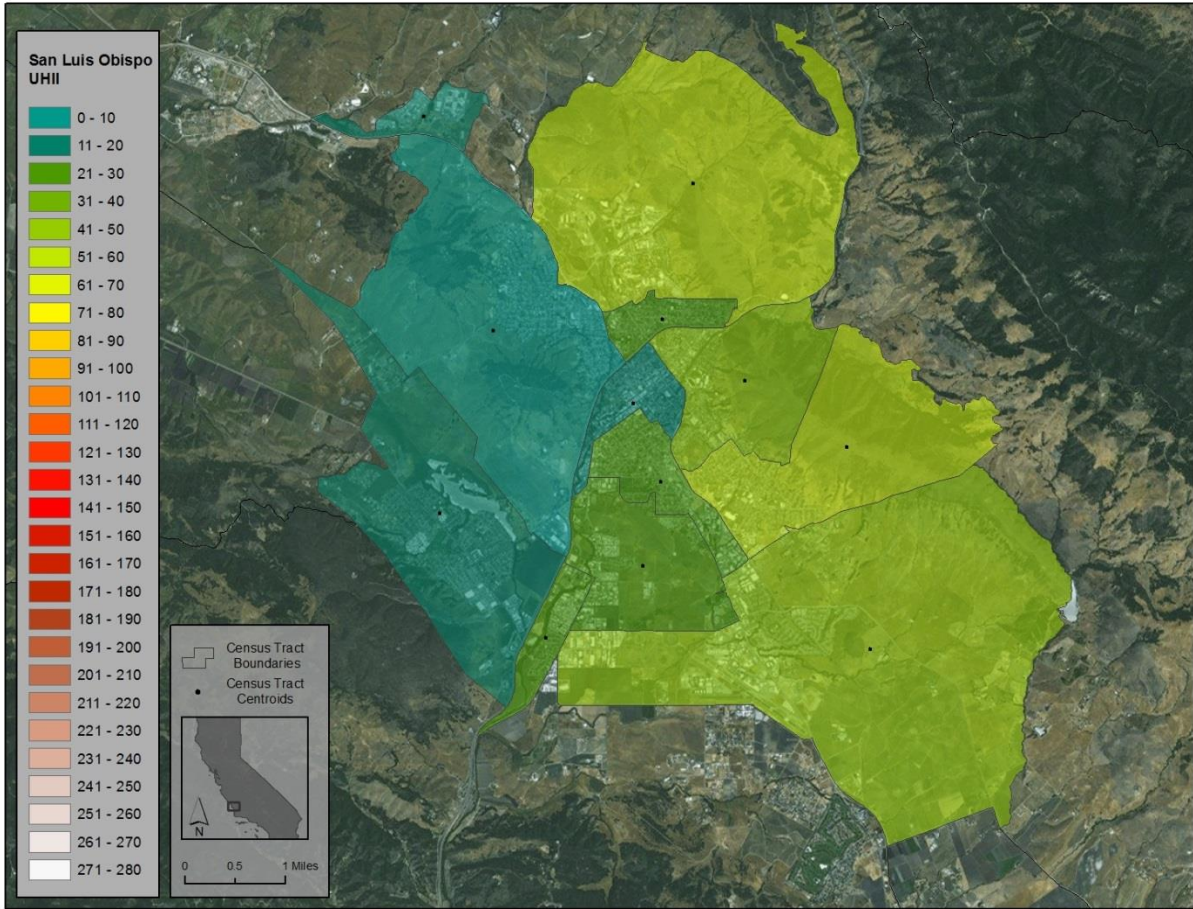


Figure D34: San Luis Obispo area UHII (DH/day).  
 Average temperature difference between warmest and coolest census tracts is 2.0°C.

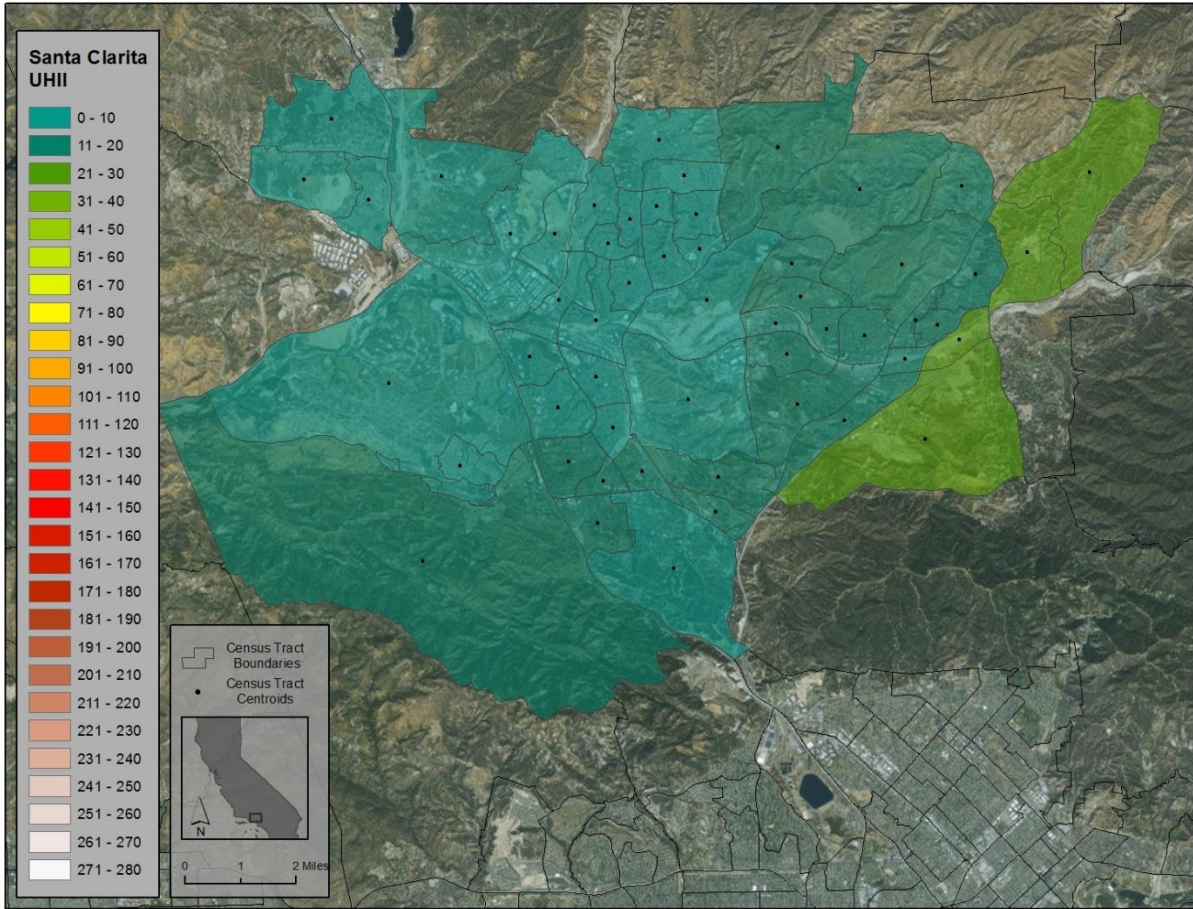


Figure D35: Santa Clarita area UHII (DH/day).  
 Average temperature difference between warmest and coolest census tracts is 1.0°C.



Figure D36: Santa Cruz area UHII (DH/day).  
 Average temperature difference between warmest and coolest census tracts is 1.6°C.

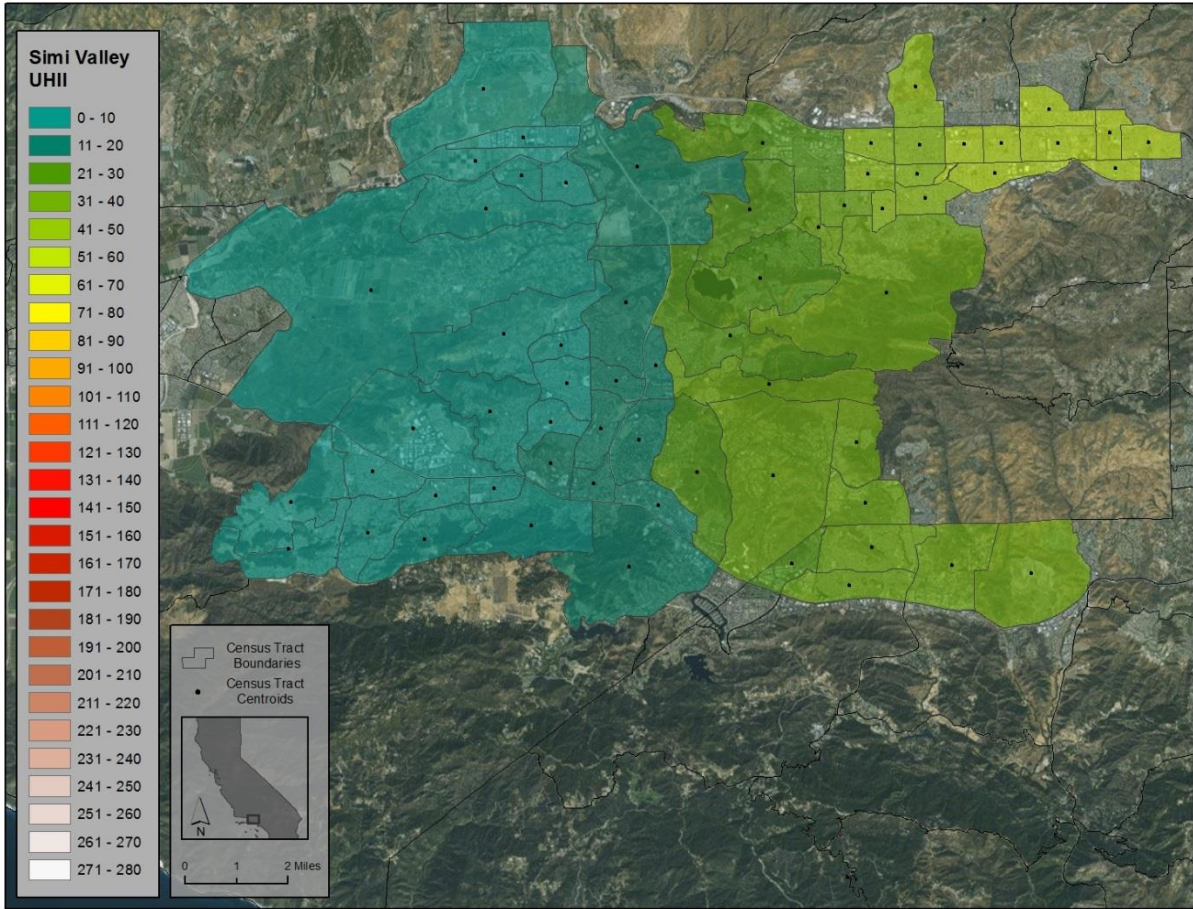


Figure D37: Simi Valley and Thousand Oaks areas UHII (DH/day).  
Average temperature difference between warmest and coolest census tracts is 2.4°C.

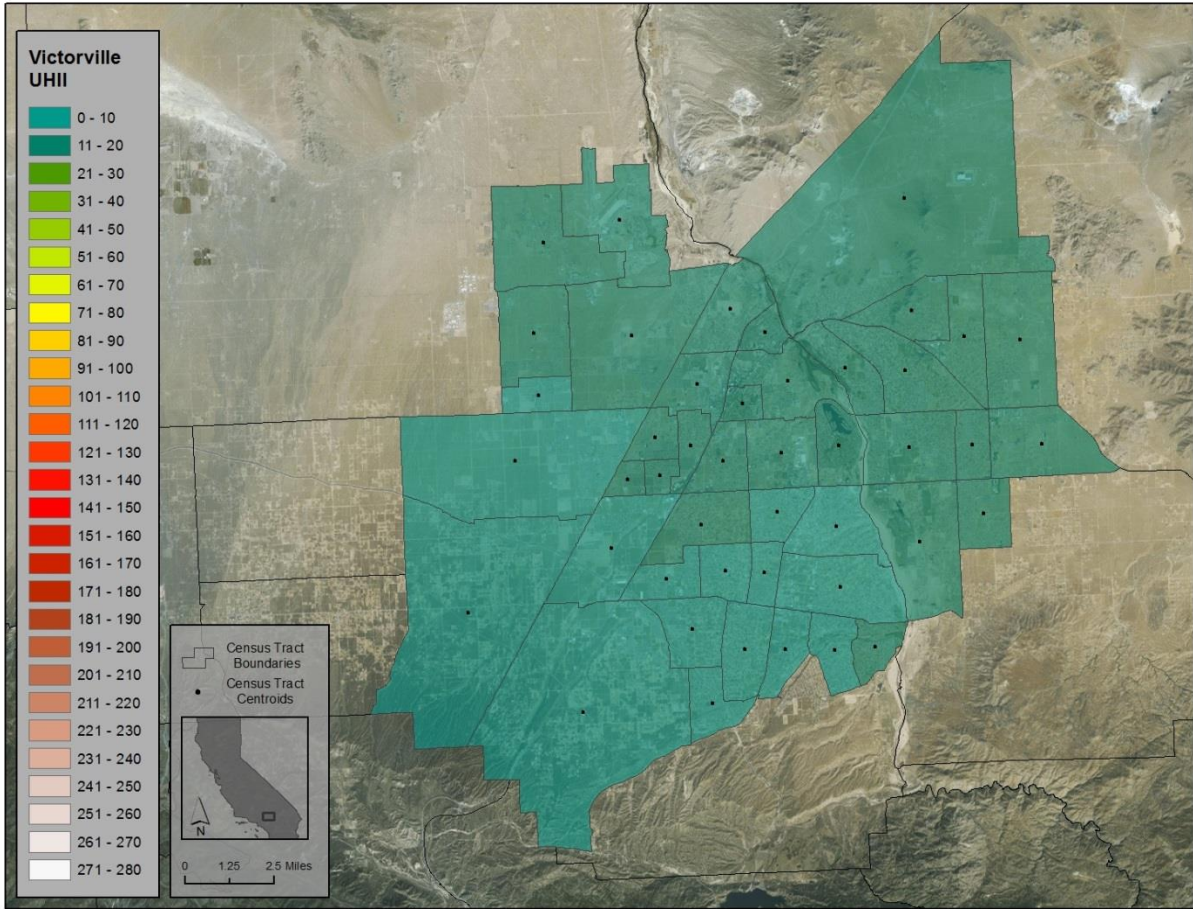


Figure D38: Victorville area UHII (DH/day).  
Average temperature difference between warmest and coolest census tracts is 0.4°C.

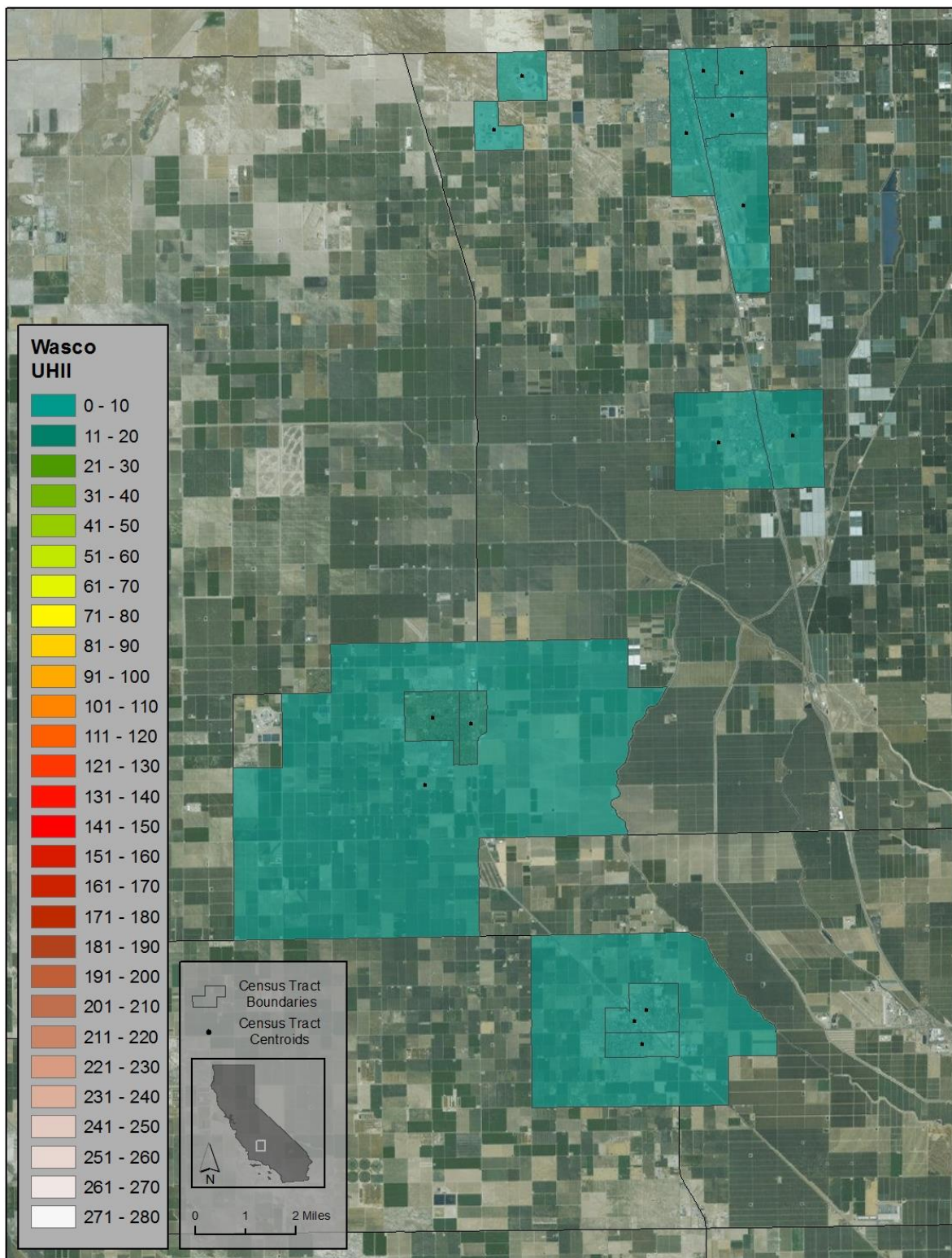


Figure D39: Delano, Wasco, and Shafter areas UHII (DH/day).  
Average temperature difference between warmest and coolest census tracts is 0.6°C.



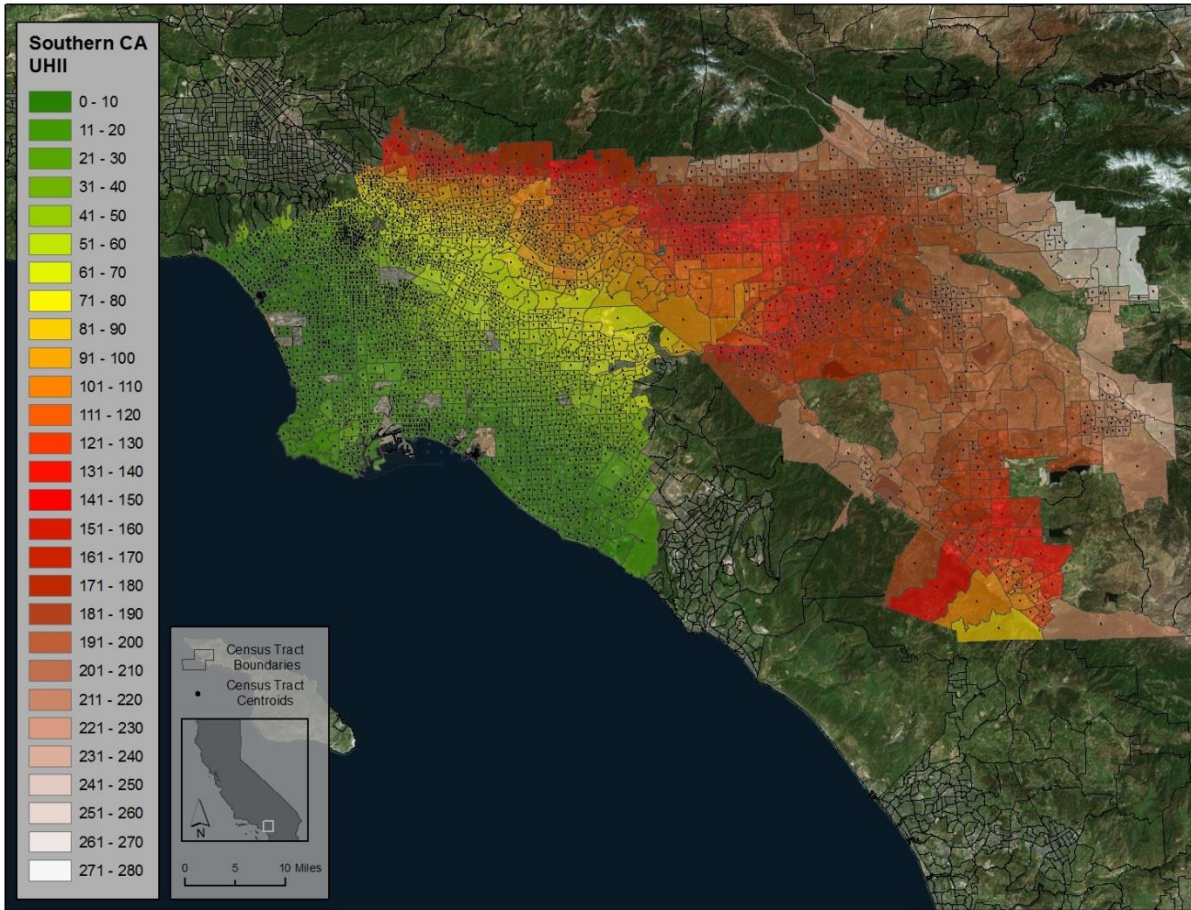


Figure D40: Los Angeles east and west basins.  
 Average temperature difference between warmest and coolest census tracts is 10.6°C.