

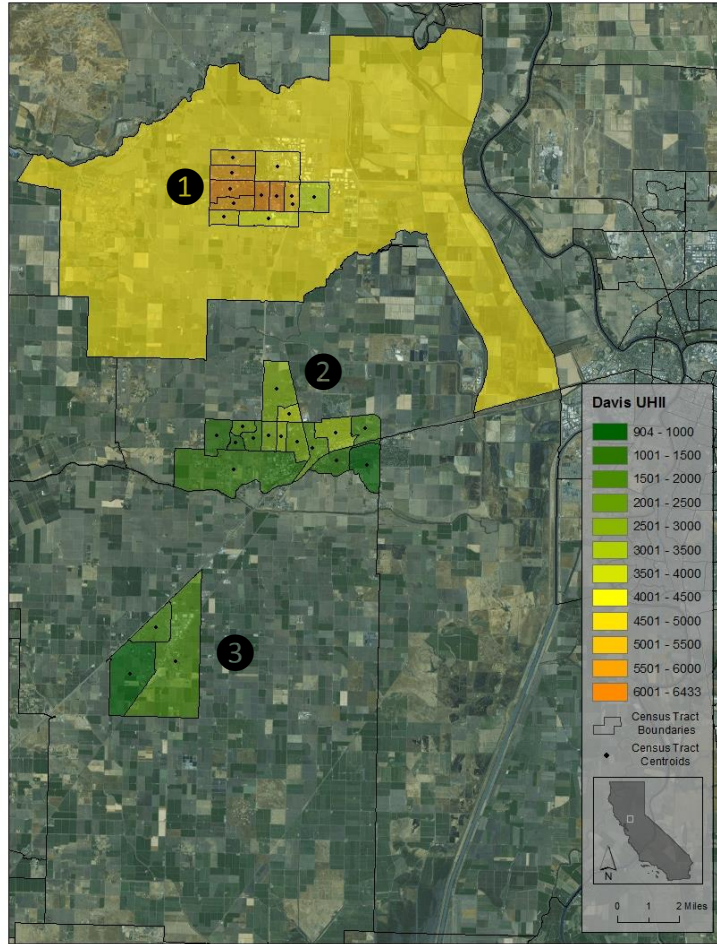
## Appendix C

Figures **C1** through **C42**: UHII in units of degree-hours total over 182 days (DH/182 days), for various UHII tiles.

In this appendix, scales vary from one map to another, that is, the plotted ranges of UHII, bins (intervals), and color codes vary based on each region's characteristics.

All maps are oriented with north pointing up. The dots represent the centroids of the census tracts.

For each UHII map, a corresponding CalEnviroScreen 2.0 map (over a roughly similar domain) is provided for a visual comparison of the two datasets and scores. Each pair of maps also contains numbers in black circles. The purpose of these numbers is simply to provide visual geo-referencing between each two maps.



CalEnviroScreen 2.0 results

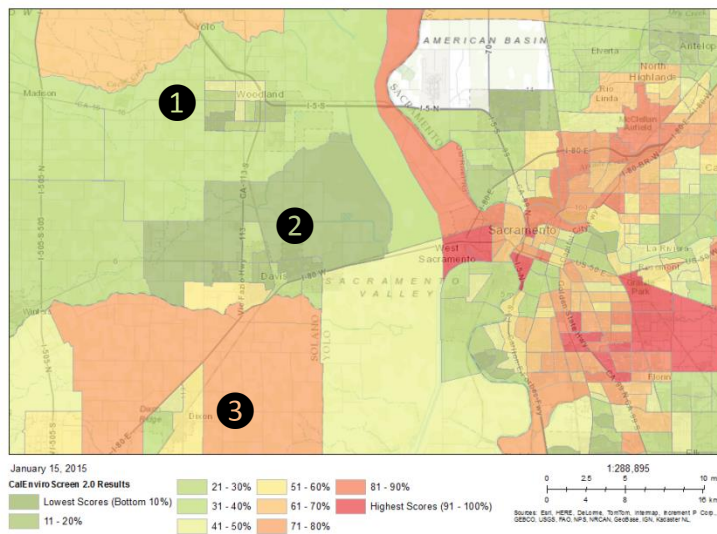
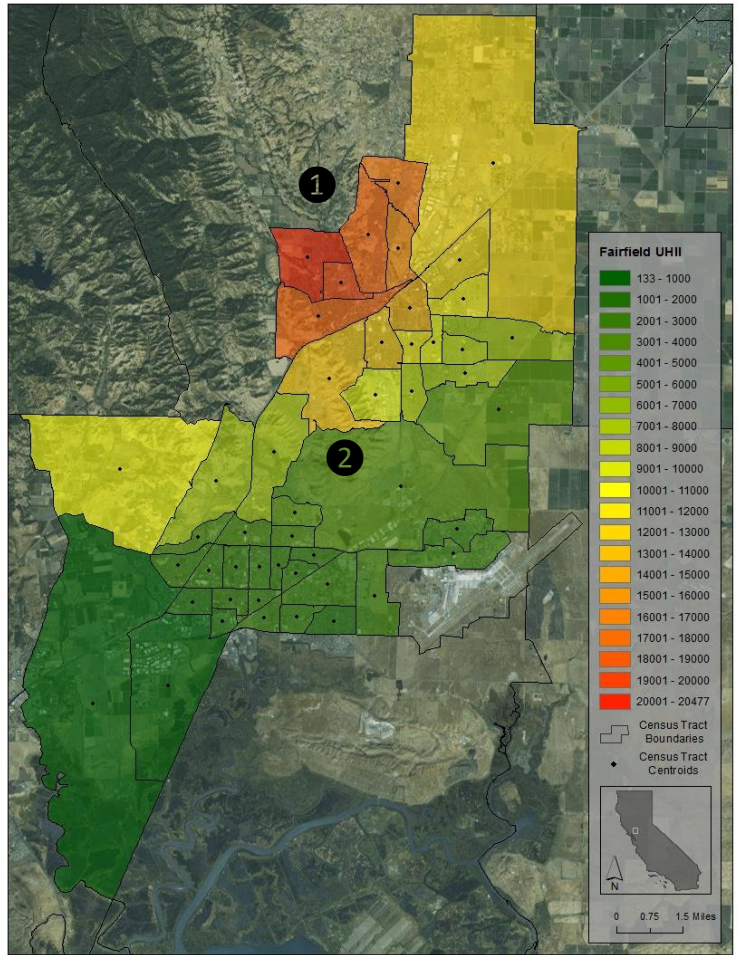


Figure C1: Woodland, Davis, and Dixon areas UHII (top) and CalEnviroScreen (bottom) scores. (Scales are not comparable)



CalEnviroScreen 2.0 results

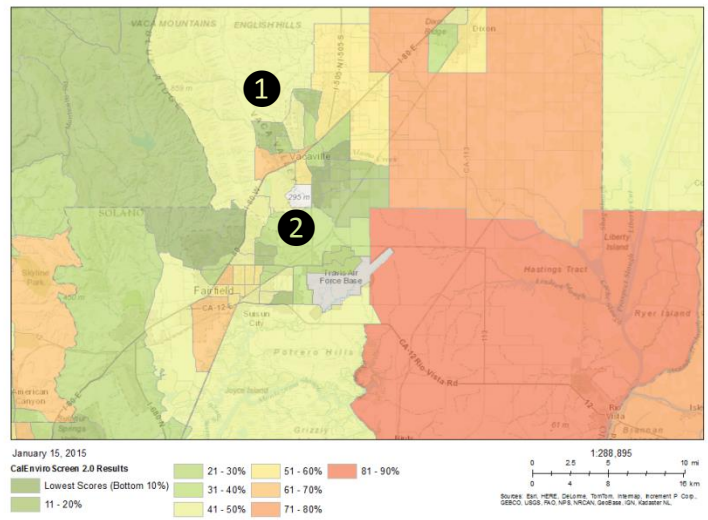
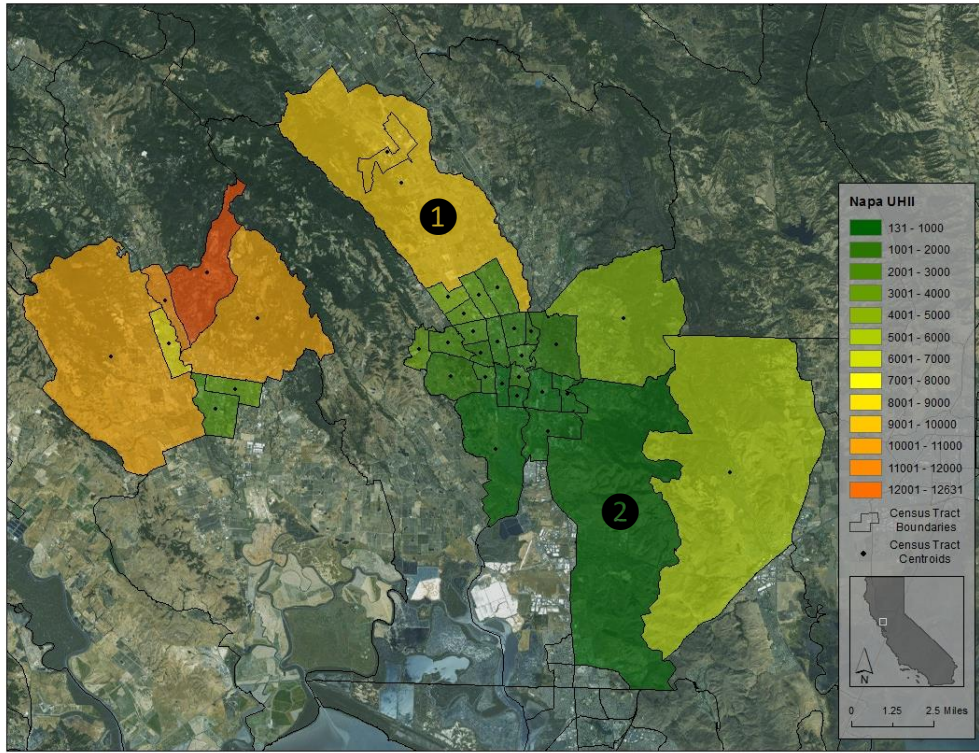


Figure C2: Fairfield and Vacaville areas UHII (top) and CalEnviroScreen (bottom) scores. (Scales are not comparable)



CalEnviroScreen 2.0 results

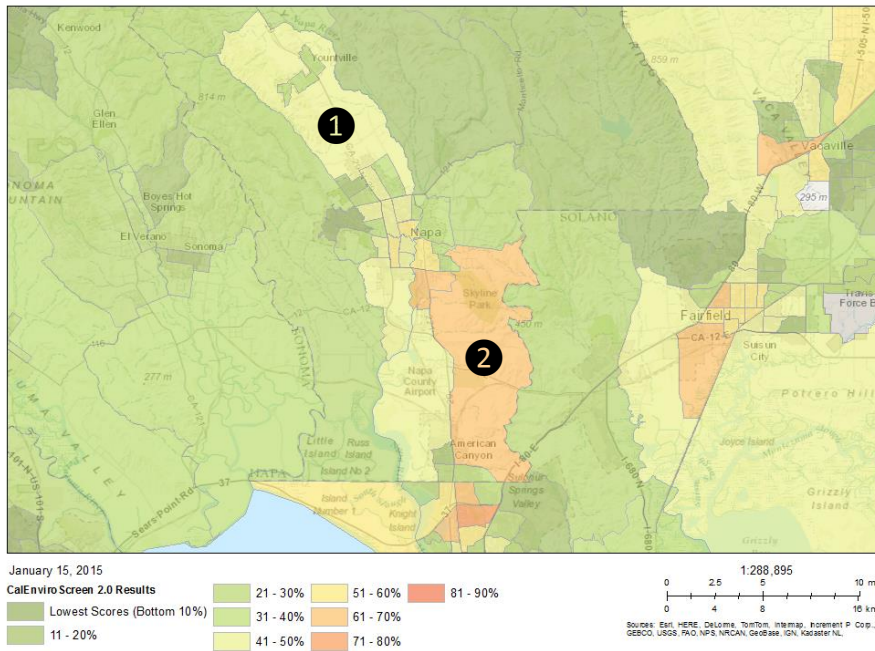
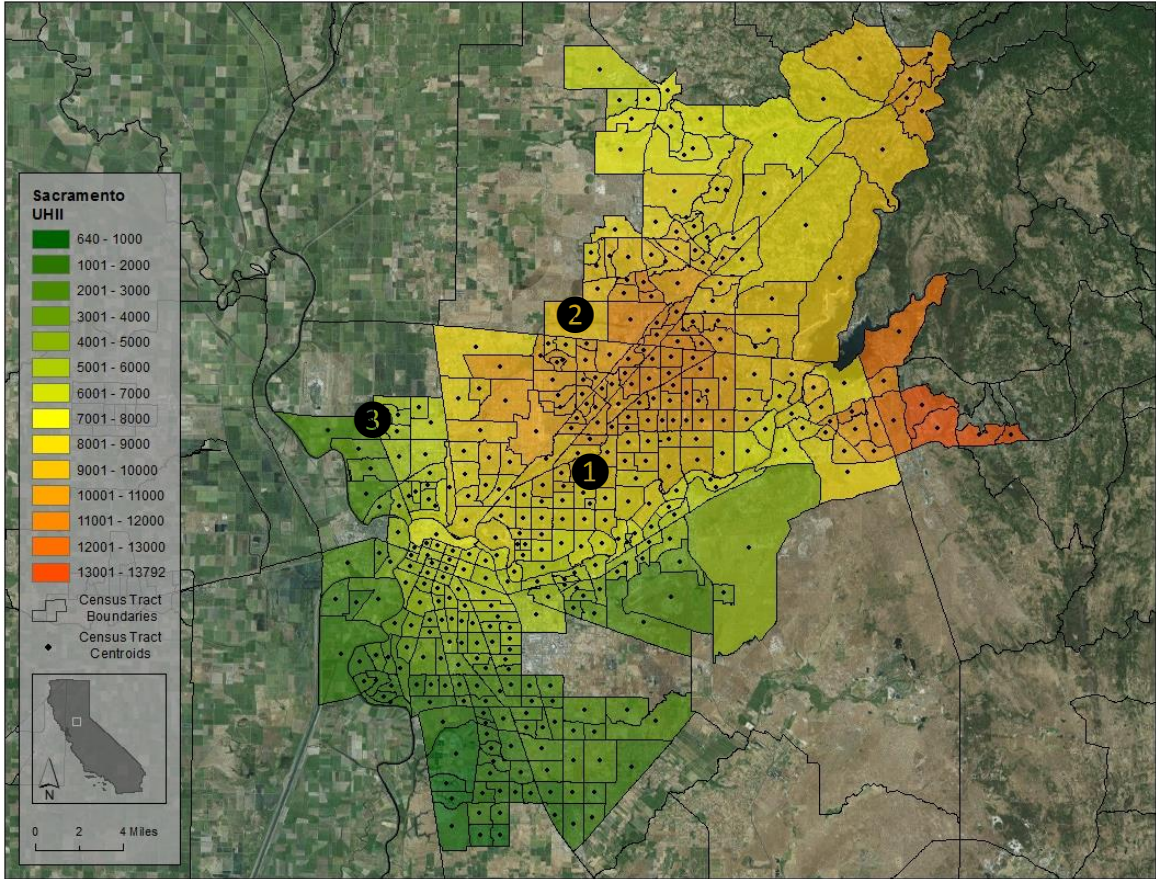


Figure C3: Napa and Sonoma areas UHII (top) and CalEnviroScreen (bottom) scores. (Scales are not comparable)



CalEnviroScreen 2.0 results

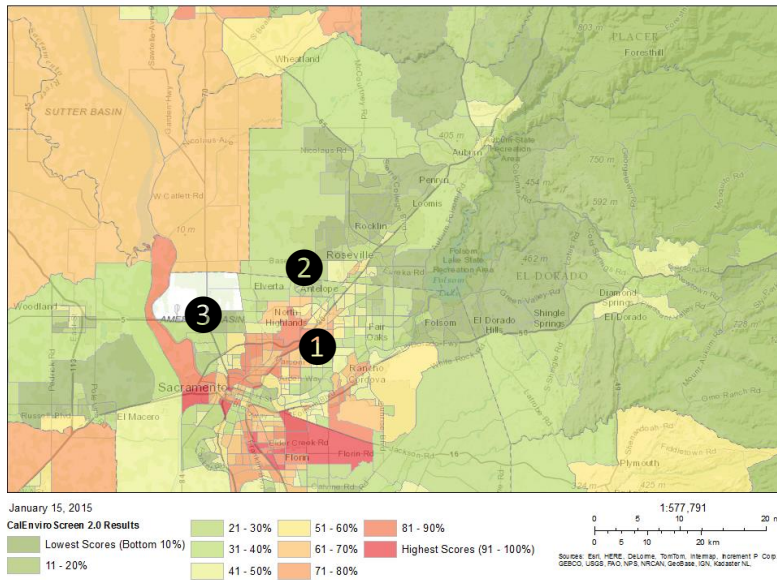
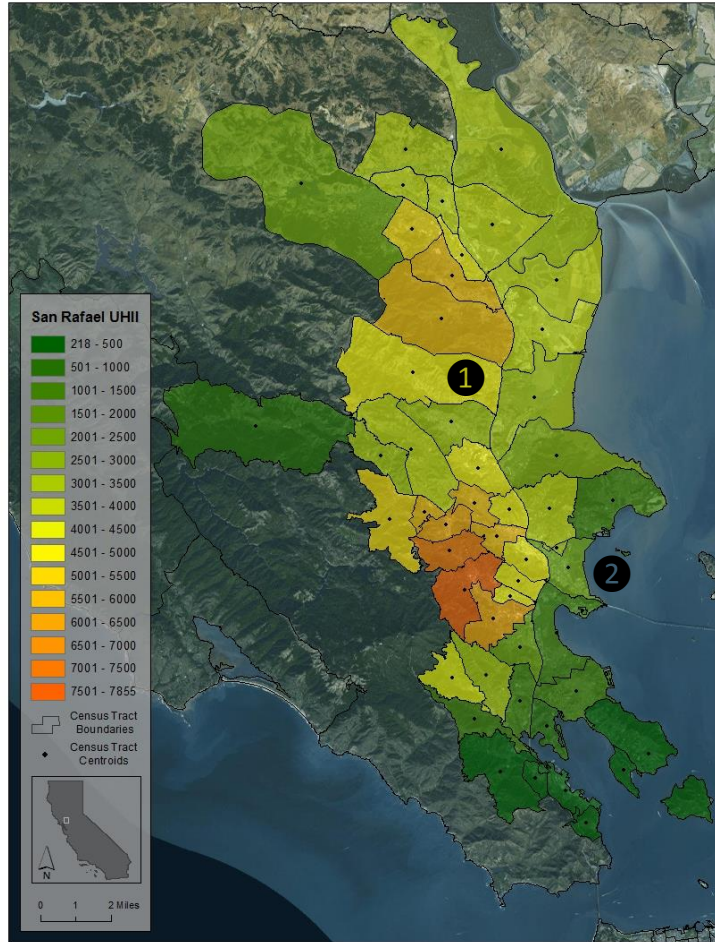


Figure C4: Sacramento and Auburn areas UHII (top) and CalEnviroScreen (bottom) scores. (Scales are not comparable)



CalEnviroScreen 2.0 results

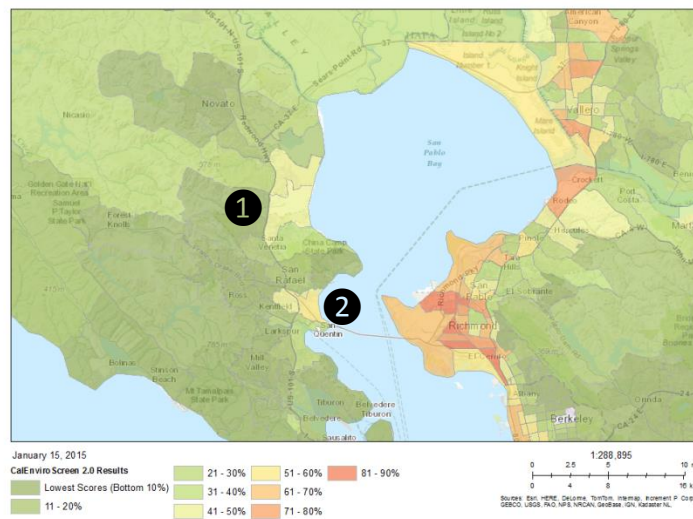


Figure C5: Sausalito, San Rafael, and Novato areas UHII (top) and CalEnviroScreen (bottom) scores. (Scales are not comparable)

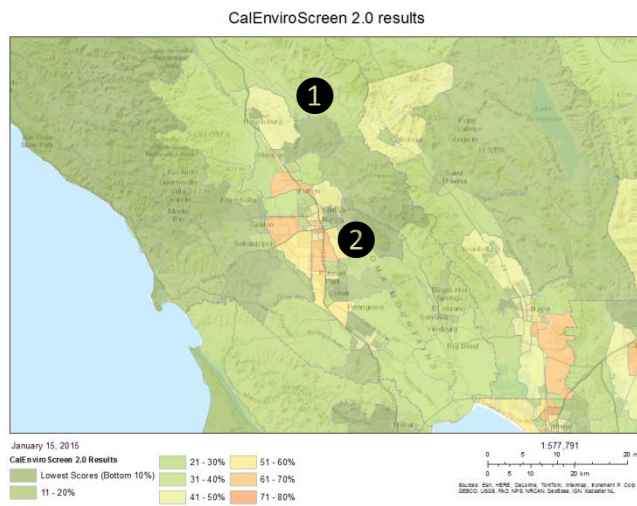
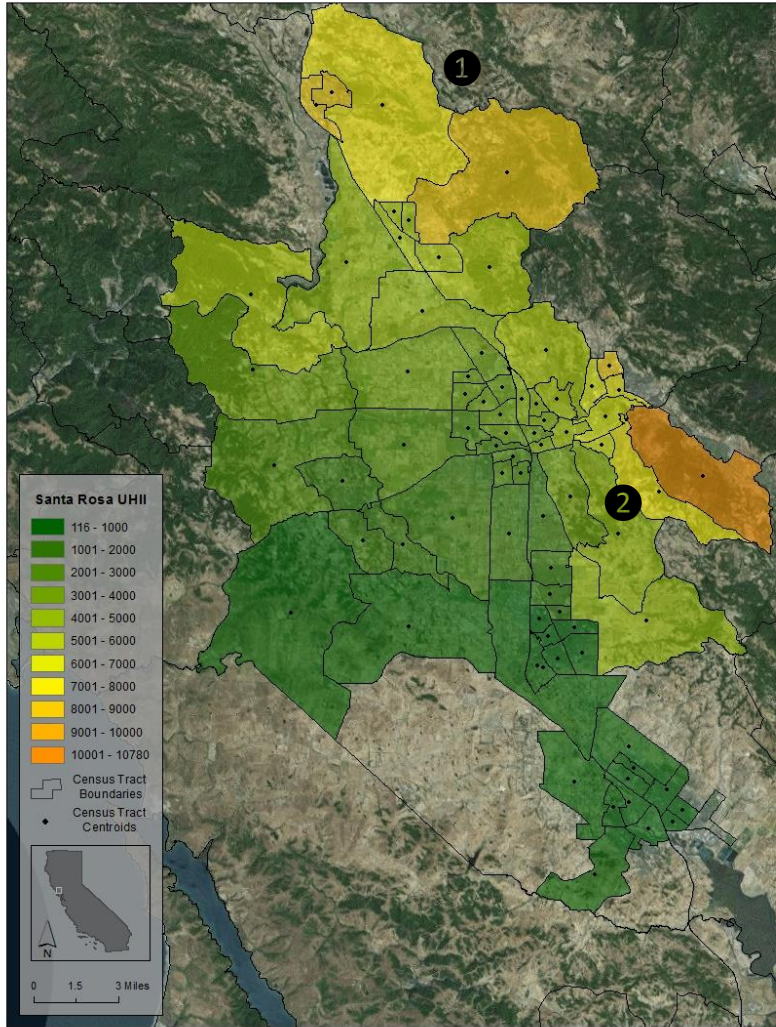
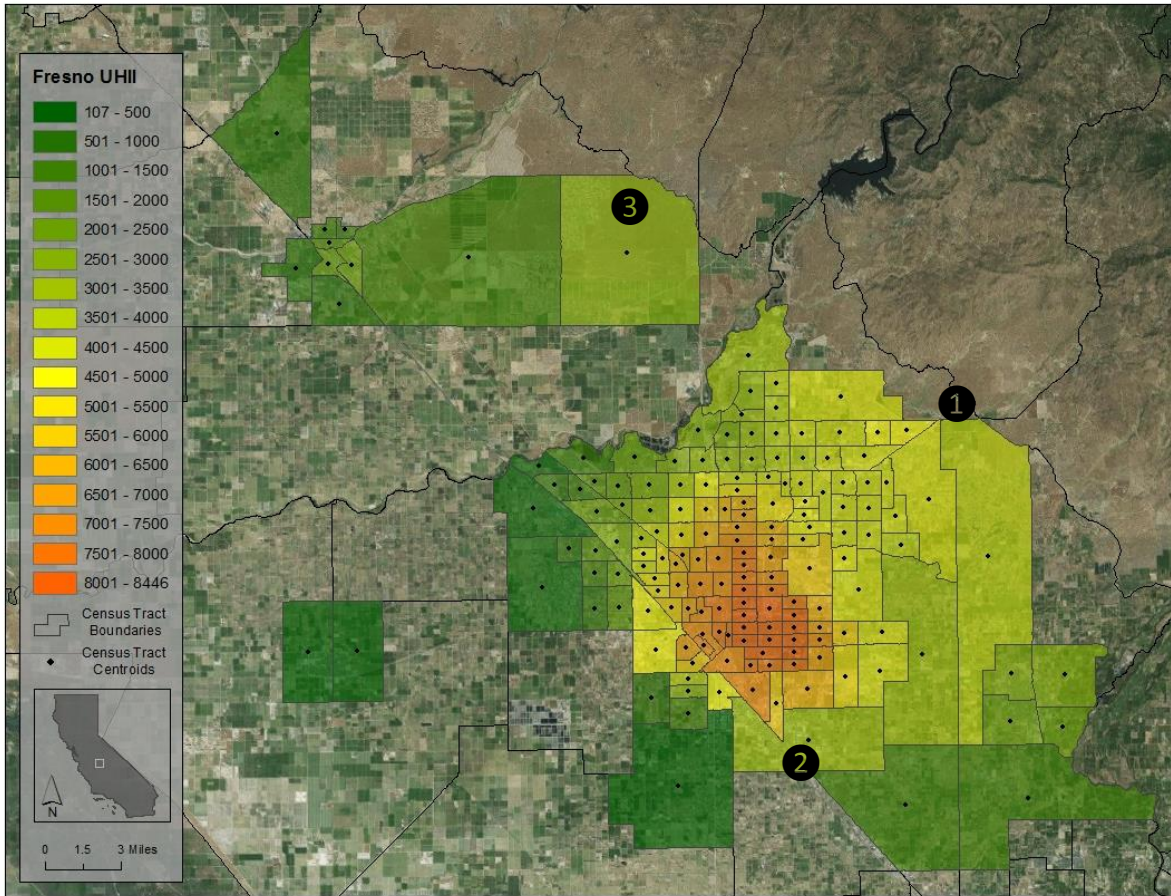


Figure C6: Rohnert Park, Santa Rosa, and Healdsburg areas UHII (top) and CalEnviroScreen (bottom) scores. (Scales are not comparable)



CalEnviroScreen 2.0 results

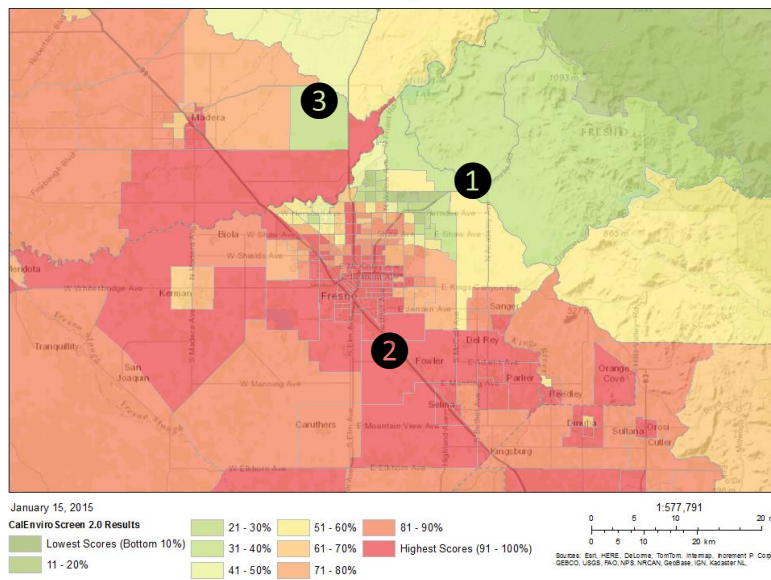
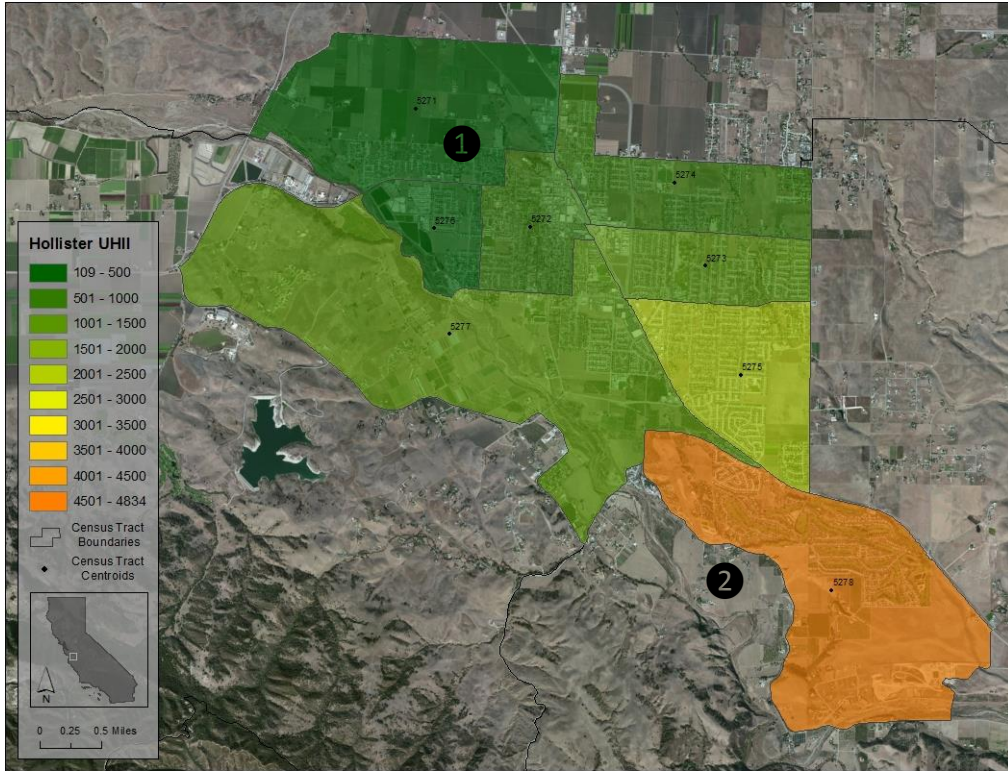


Figure C7: Fresno and Madera areas UHII (top) and CalEnviroScreen (bottom) scores. (Scales are not comparable)





CalEnviroScreen 2.0 results

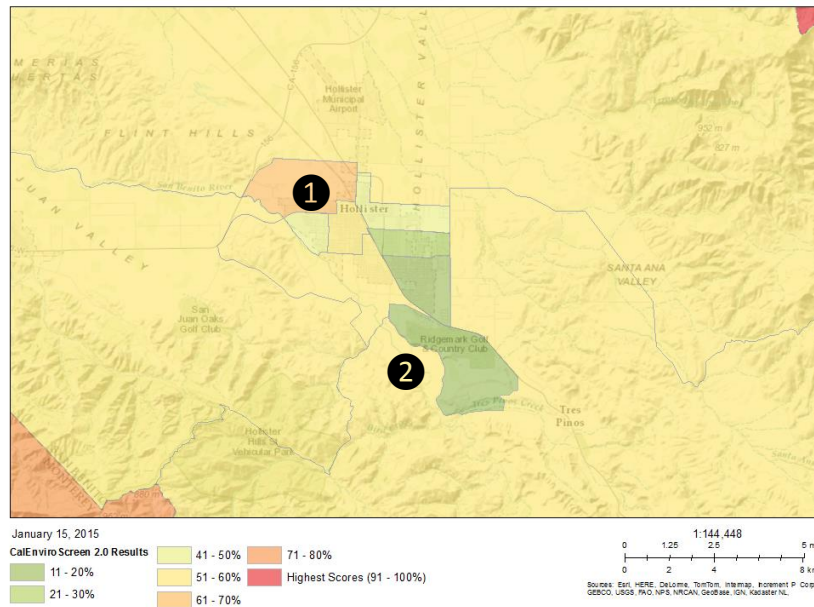
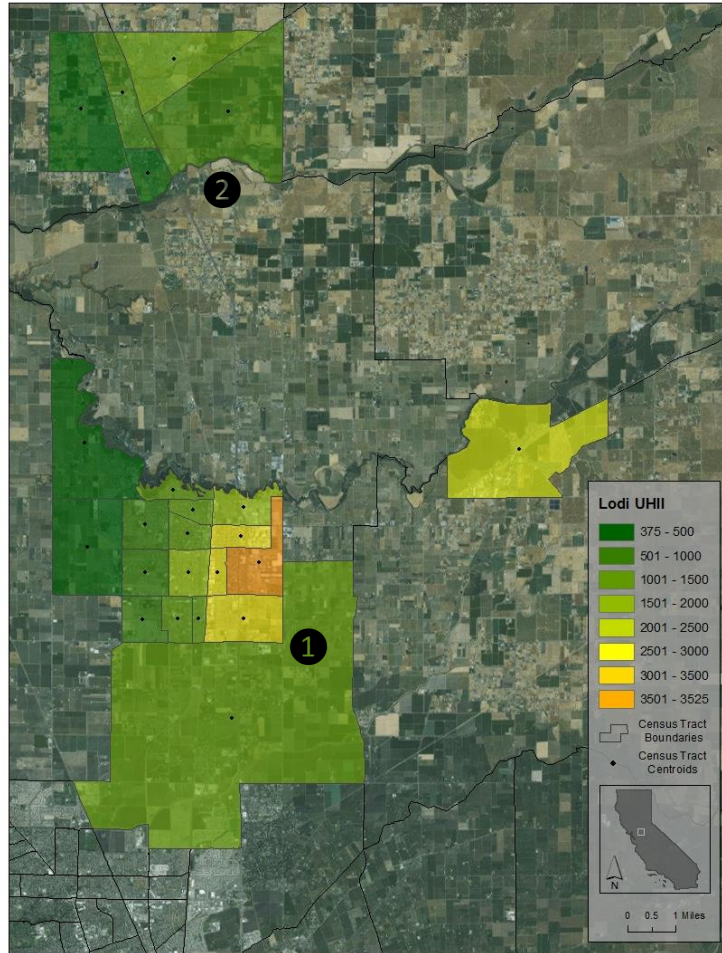


Figure C8: Hollister area UHII (top) and CalEnviroScreen (bottom) scores. (Scales are not comparable)



CalEnviroScreen 2.0 results

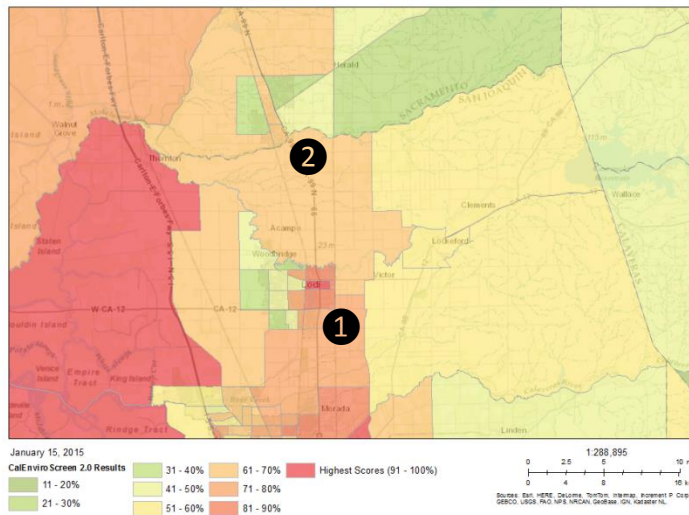
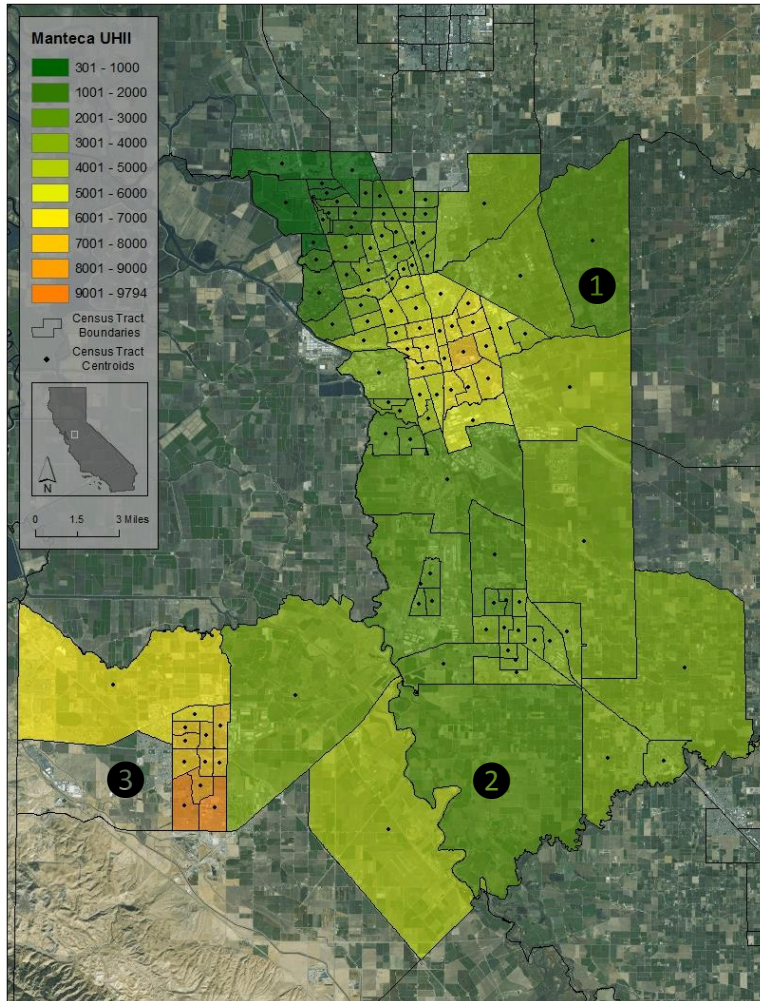


Figure C9: Lodi area UHII (top) and CalEnviroScreen (bottom) scores. (Scales are not comparable)



CalEnviroScreen 2.0 results

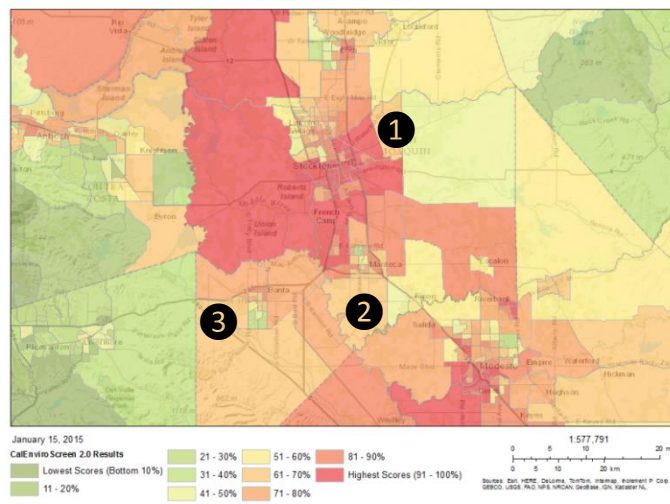
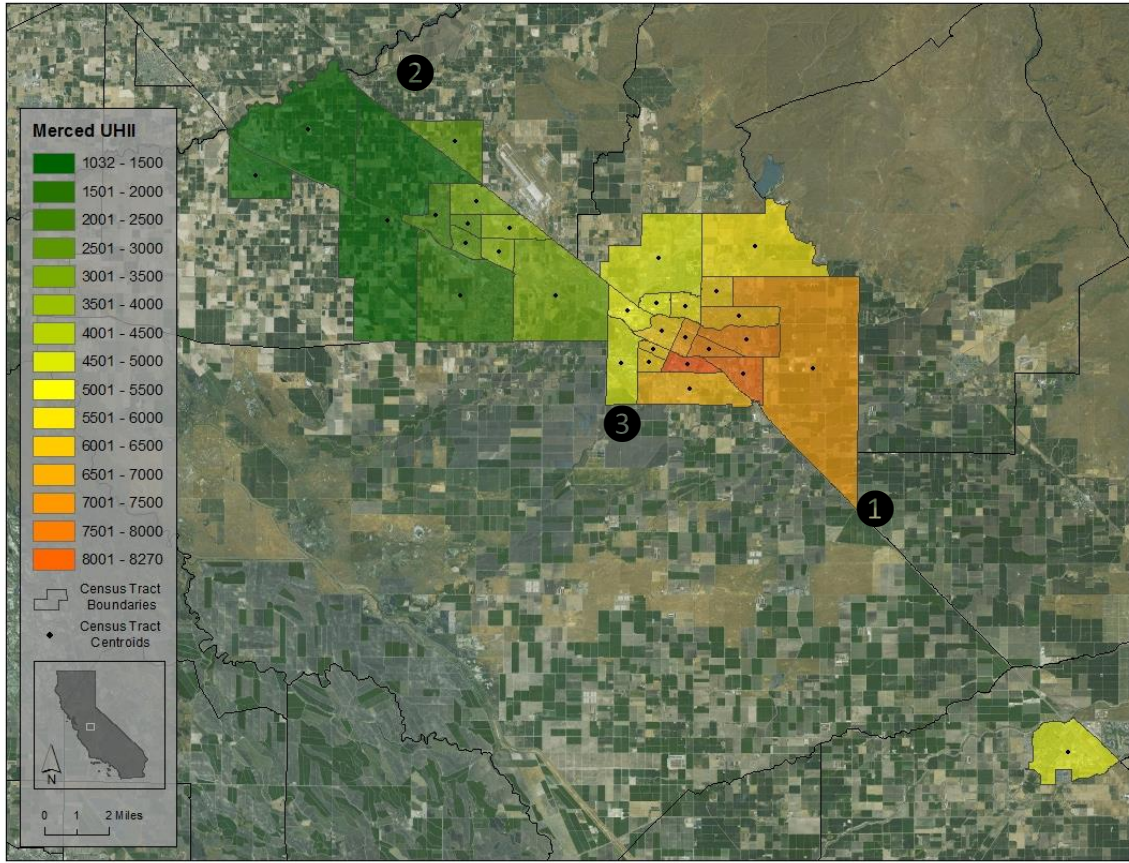


Figure C10: Stockton, Manteca, and Tracy areas UHII (top) and CalEnviroScreen (bottom) scores. (Scales are not comparable)



CalEnviroScreen 2.0 results

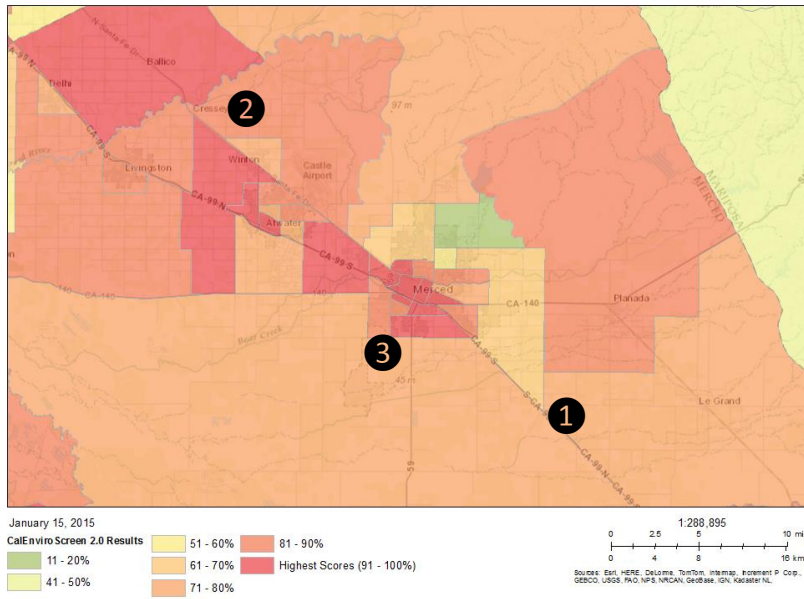
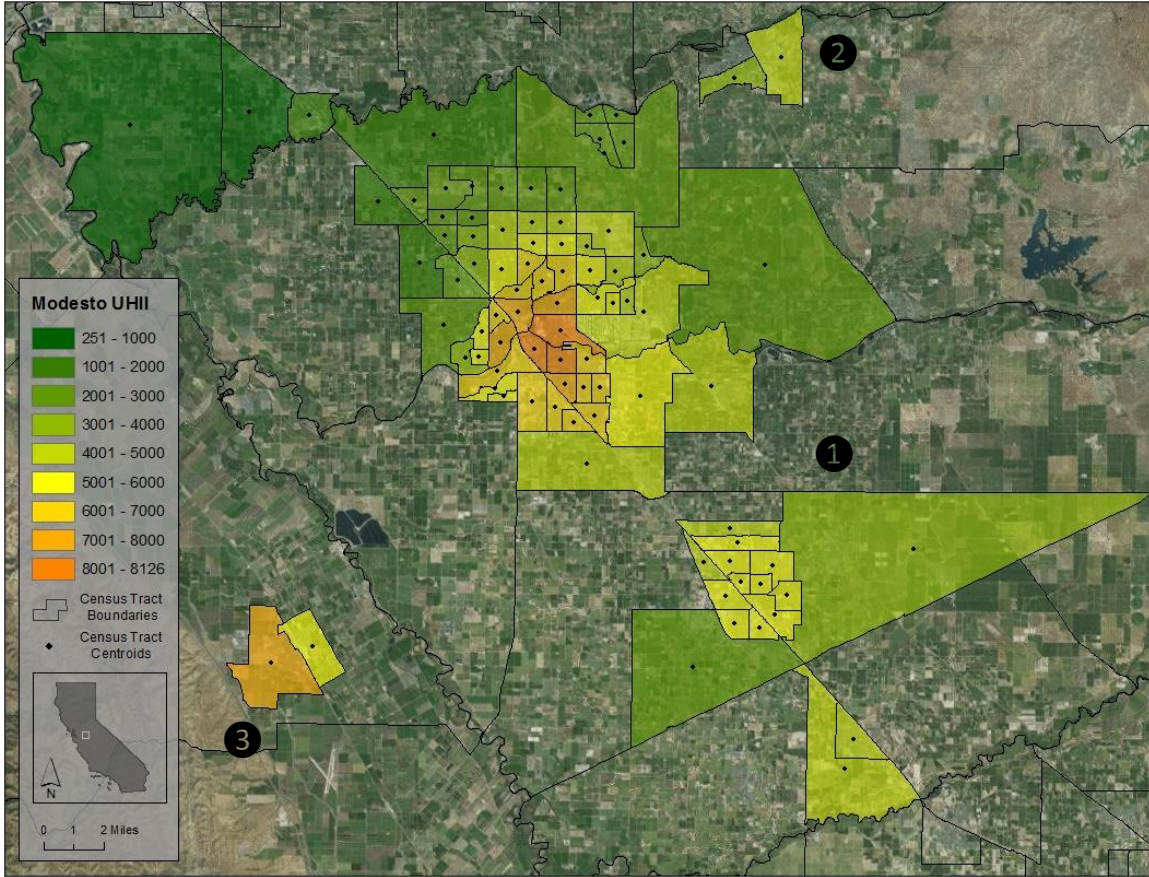


Figure C11: Merced area UHII (top) and CalEnviroScreen (bottom) scores. (Scales are not comparable)



CalEnviroScreen 2.0 results

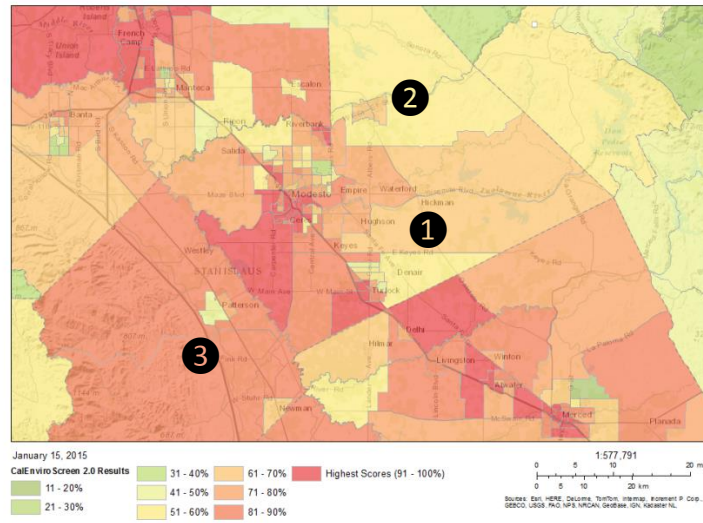
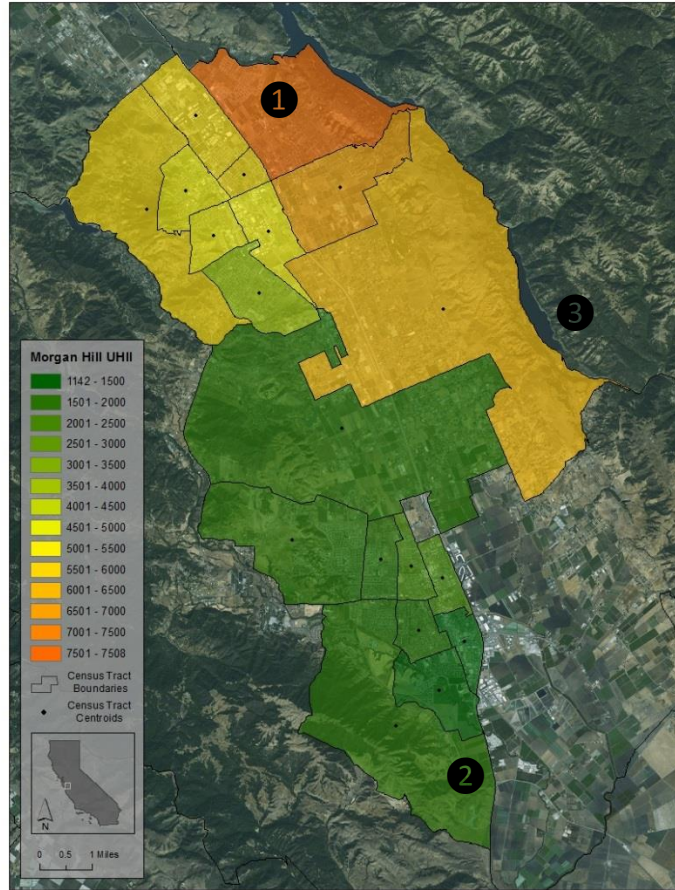


Figure C12: Modesto, Turlock, and Patterson areas UHI (top) and CalEnviroScreen (bottom) scores. (Scales are not comparable)



CalEnviroScreen 2.0 results

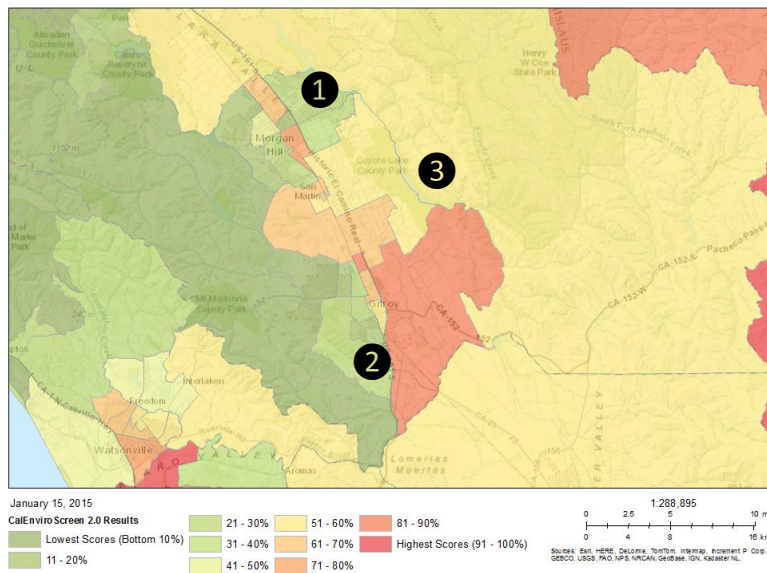
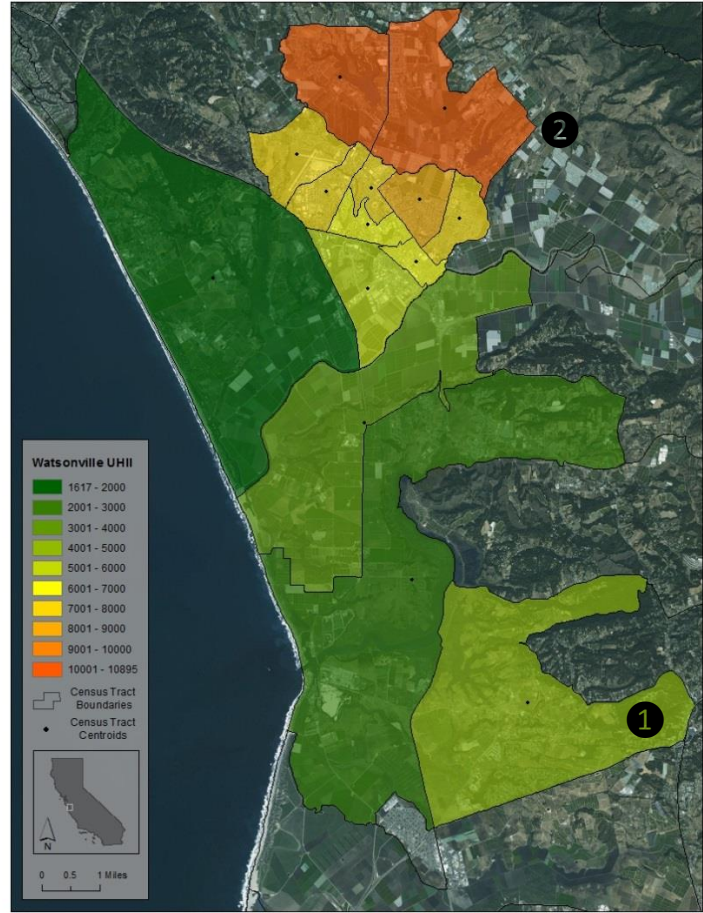


Figure C13: Morgan Hill and Gilroy areas UHII (top) and CalEnviroScreen (bottom) scores. (Scales are not comparable)



CalEnviroScreen 2.0 results

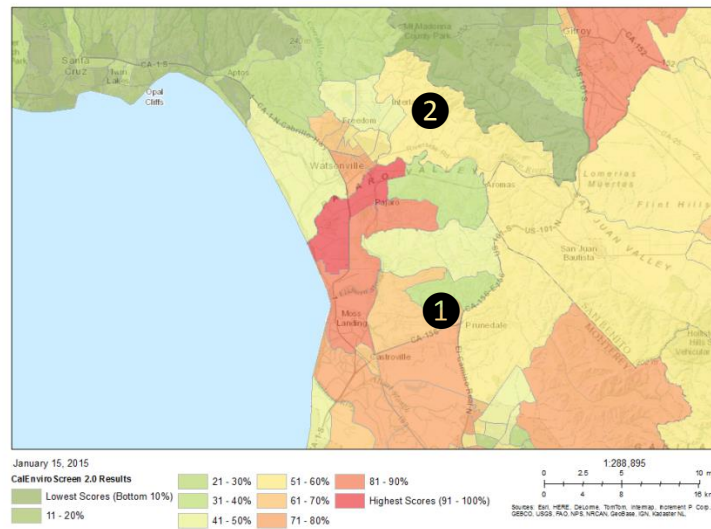
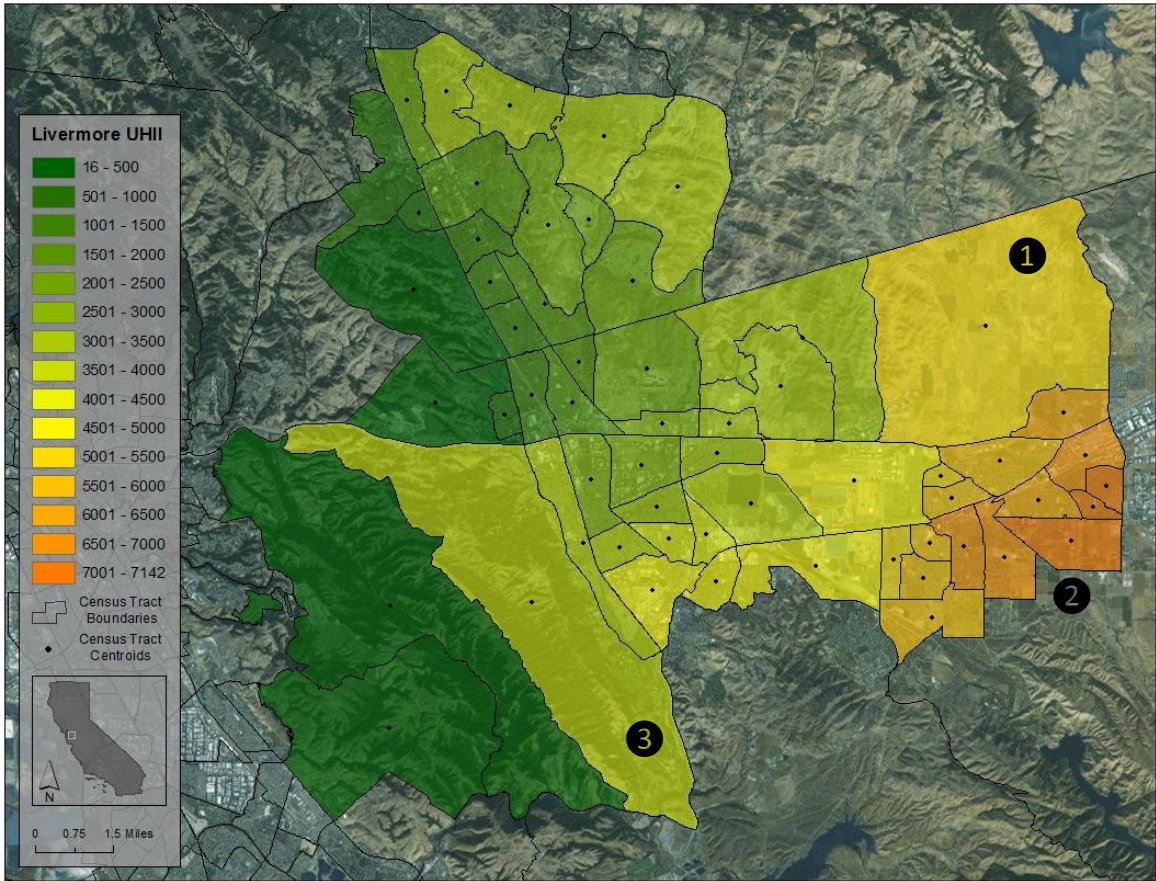


Figure C14: Watsonville and Moss Landing areas UHII (top) and CalEnviroScreen (bottom) scores. (Scales are not comparable)



CalEnviroScreen 2.0 results

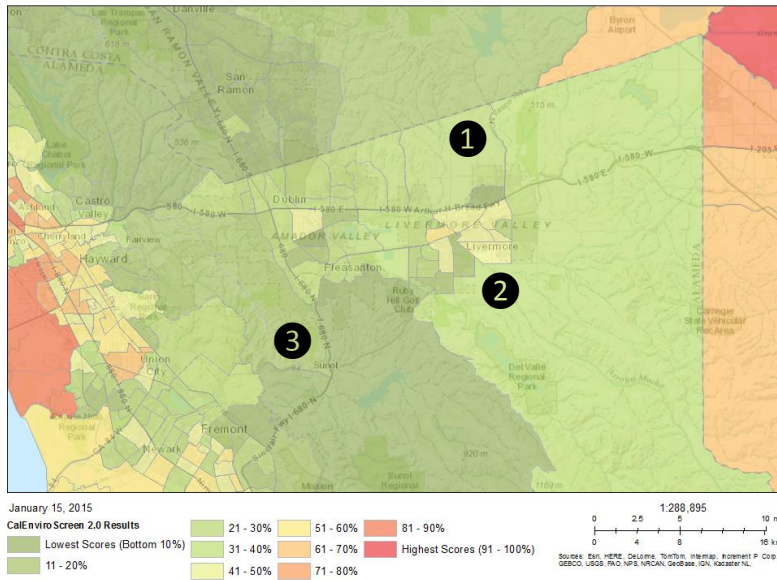
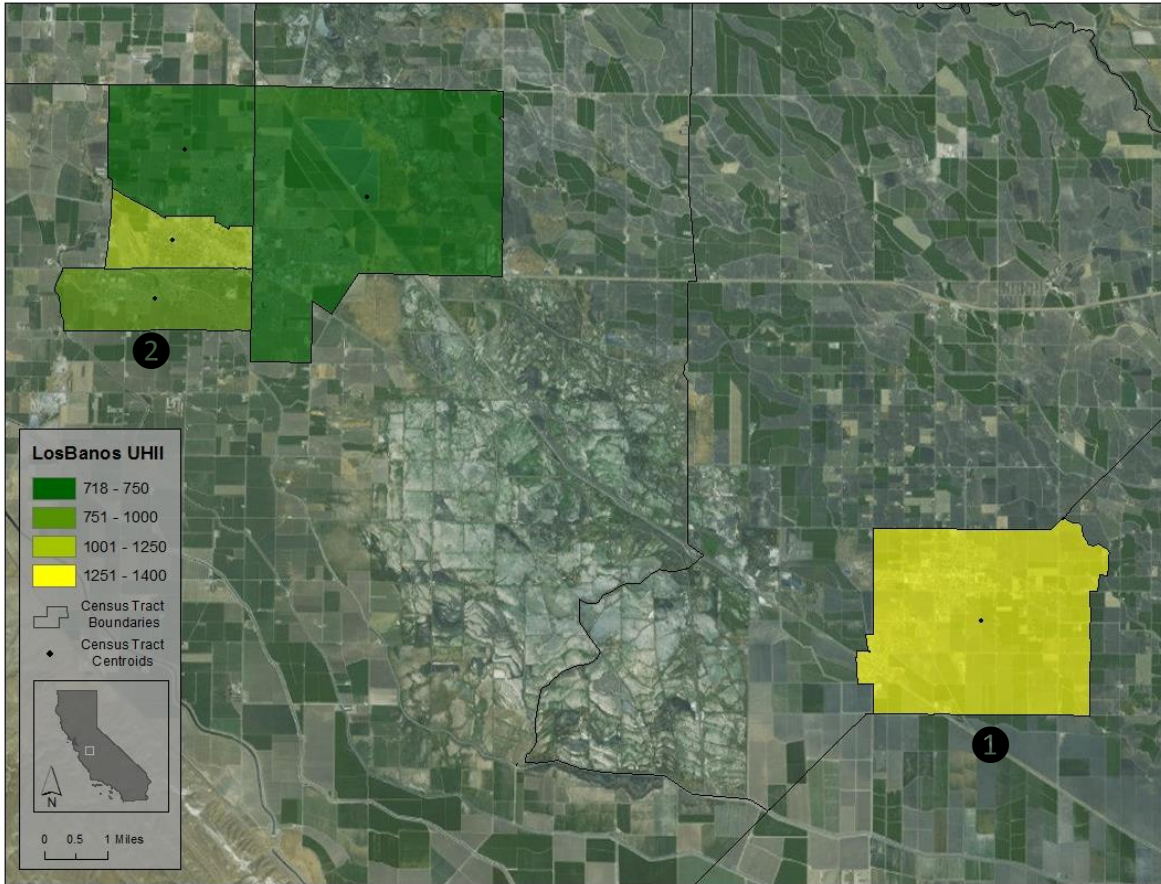


Figure C15: San Ramon, Dublin, and Livermore areas UHII (top) and CalEnviroScreen (bottom) scores. (Scales are not comparable)





CalEnviroScreen 2.0 results

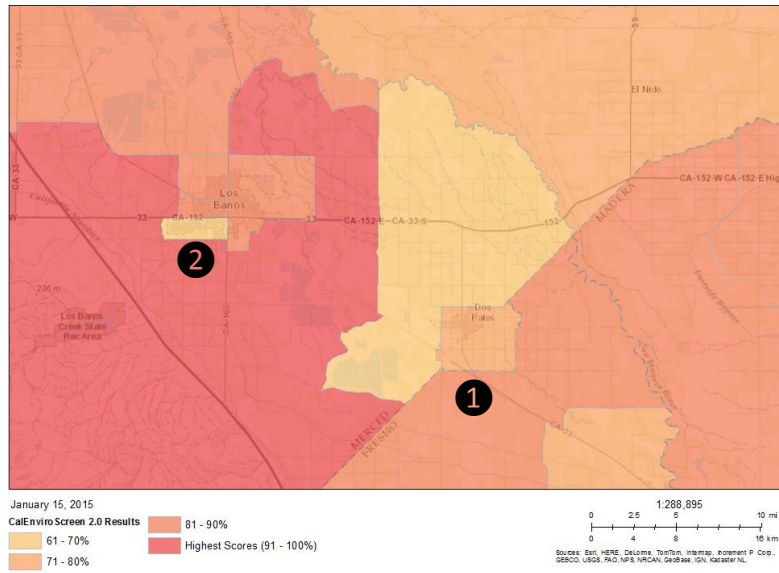
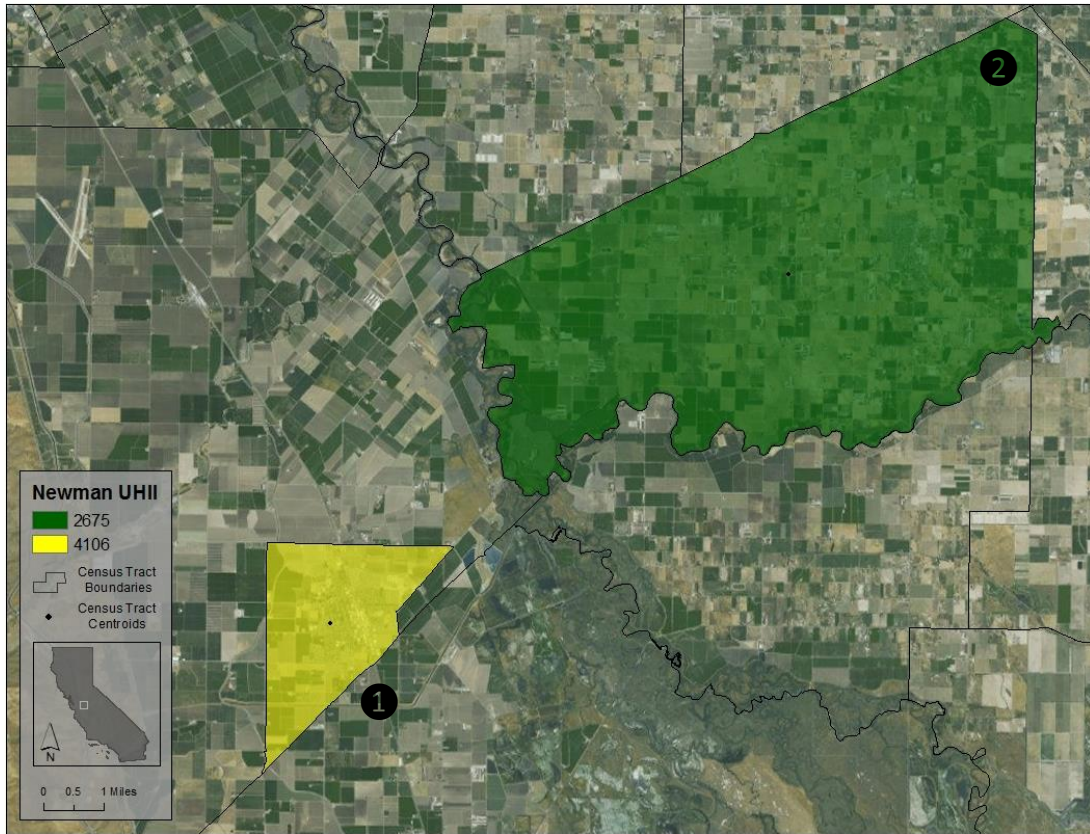


Figure C16: Los Banos and Dos Palos UHII (top) and CalEnviroScreen (bottom) scores. (Scales are not comparable)



CalEnviroScreen 2.0 results

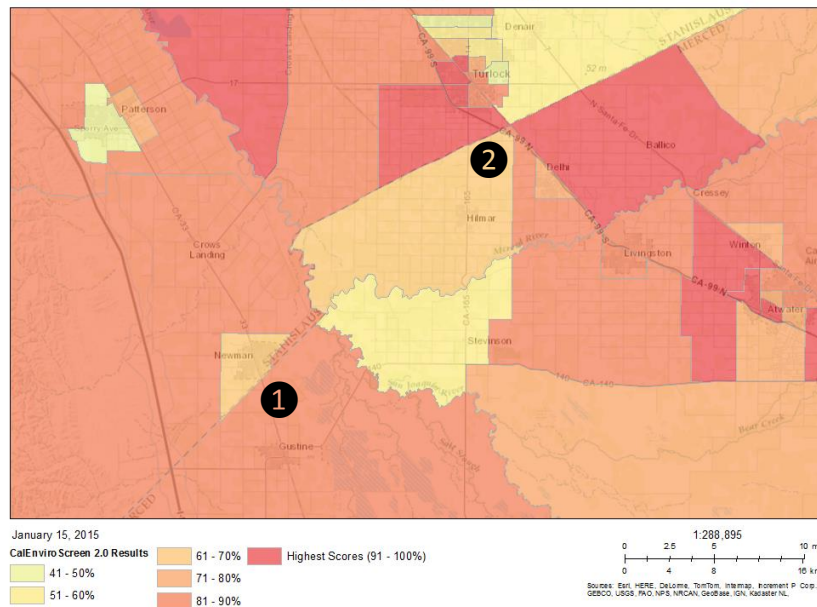


Figure C17: Newman and Hilmar areas UHII (top) and CalEnviroScreen (bottom) scores. (Scales are not comparable)

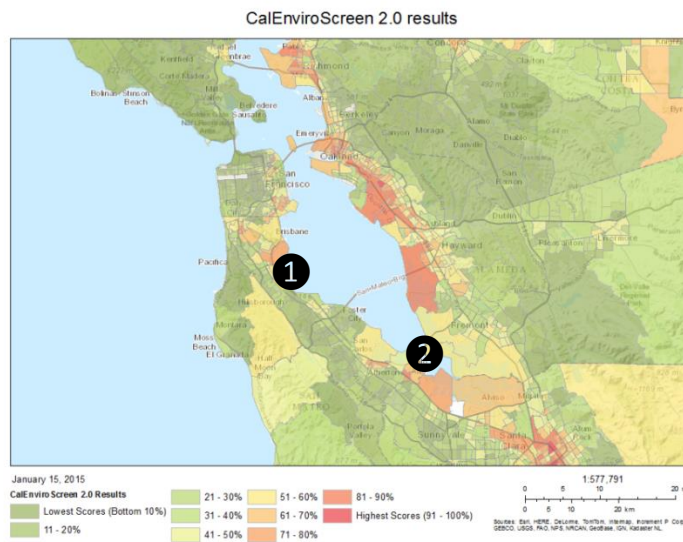
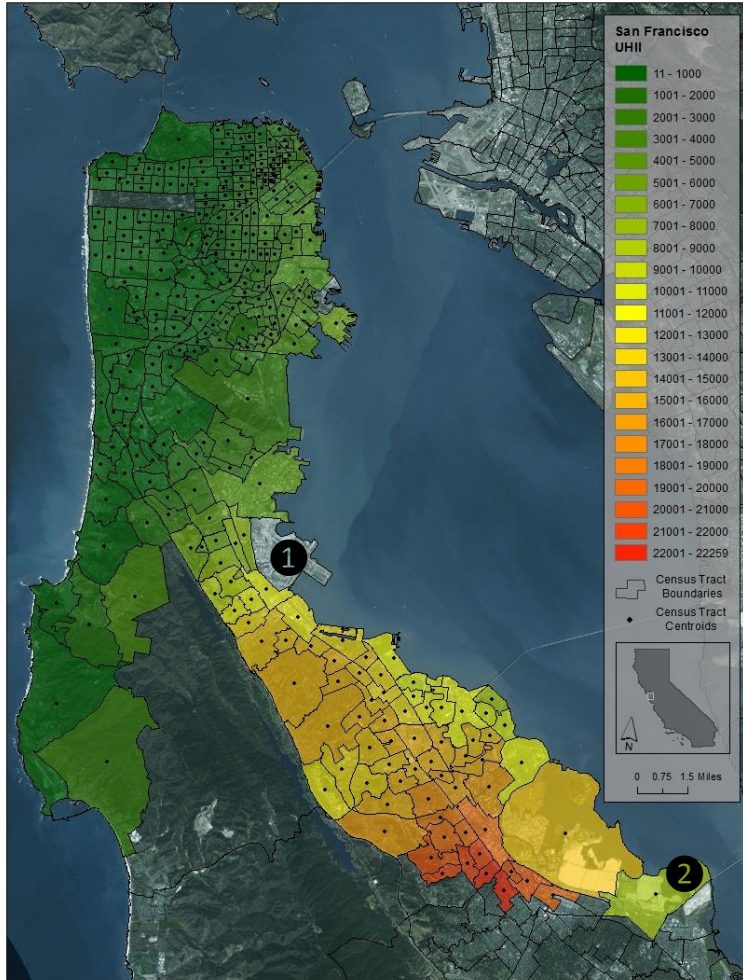
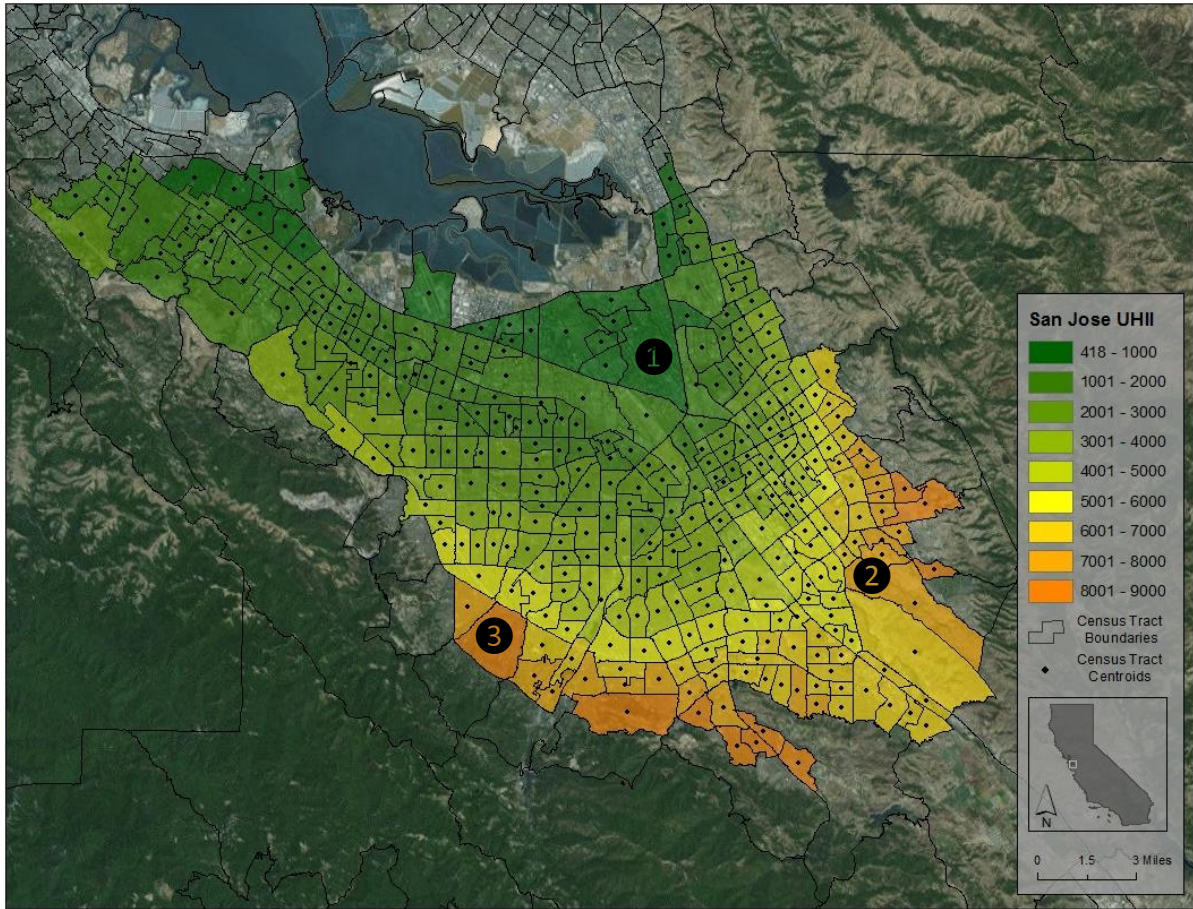


Figure C18: San Francisco peninsula UHII (top) and CalEnviroScreen (bottom) scores. (Scales are not comparable)



CalEnviroScreen 2.0 results

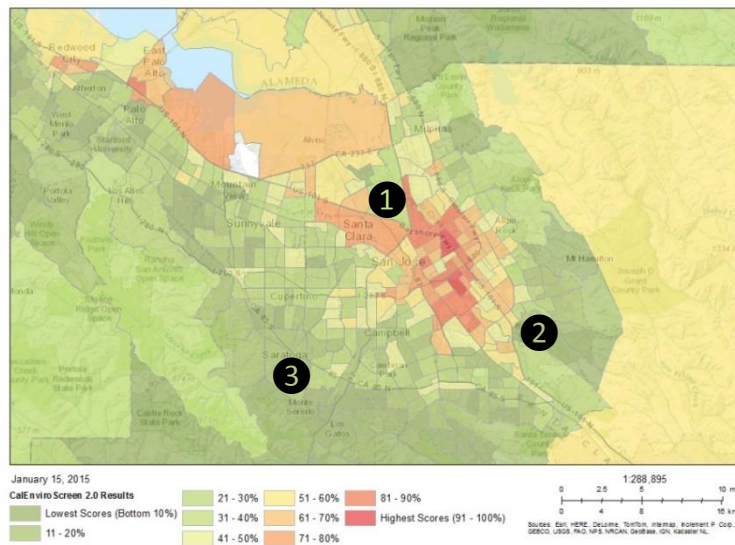
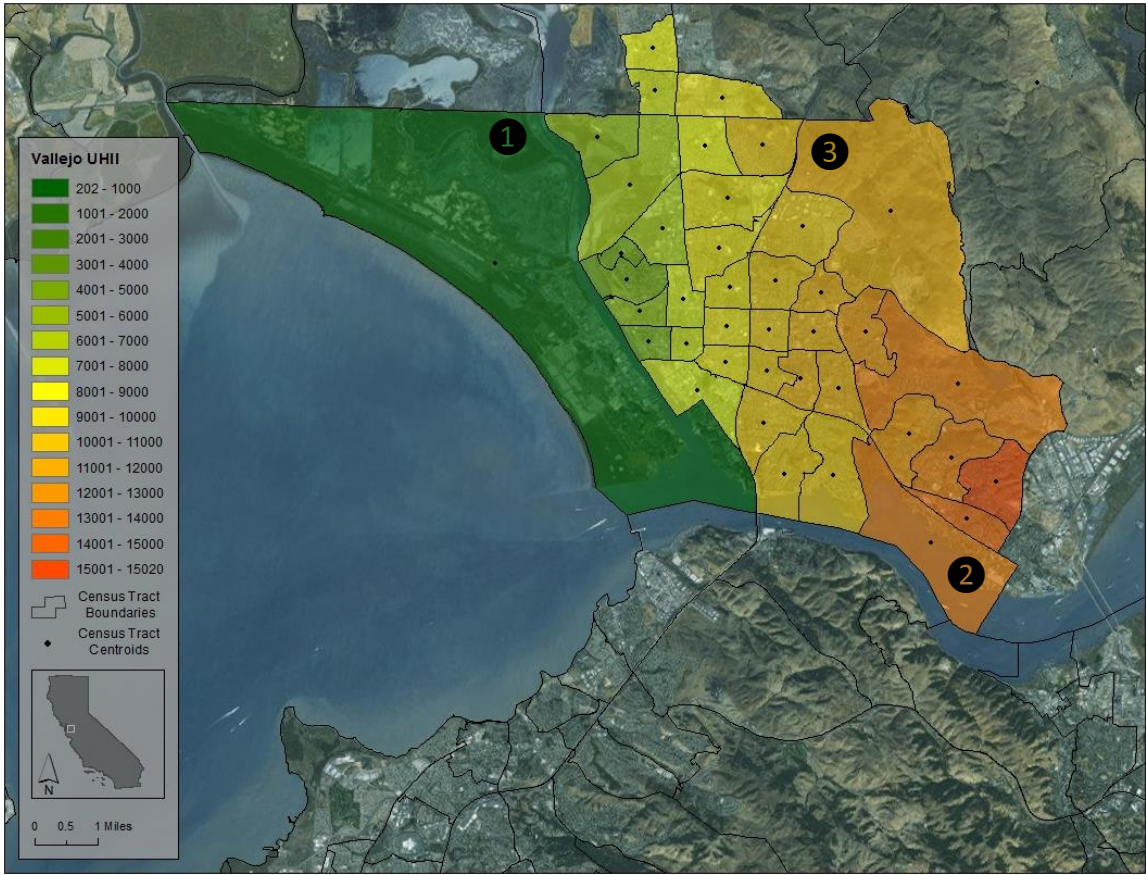


Figure C19: San Jose and South Bay areas UHII (top) and CalEnviroScreen (bottom) scores. (Scales are not comparable)



CalEnviroScreen 2.0 results

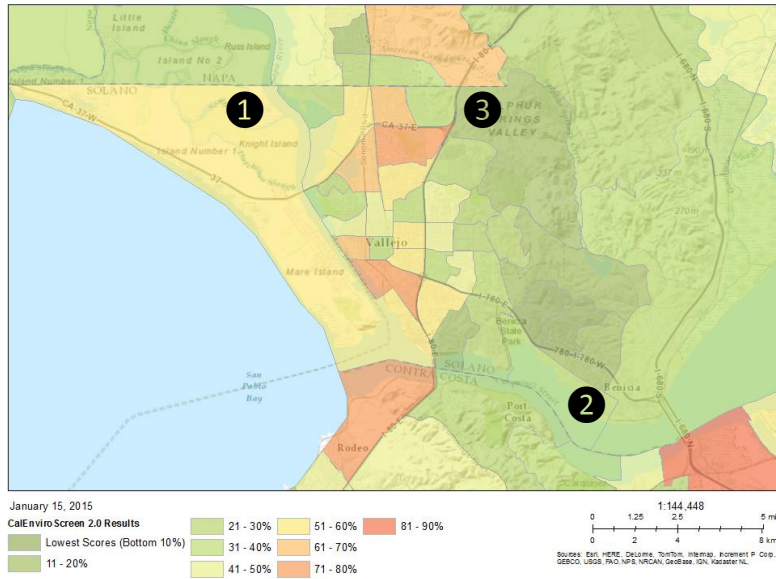
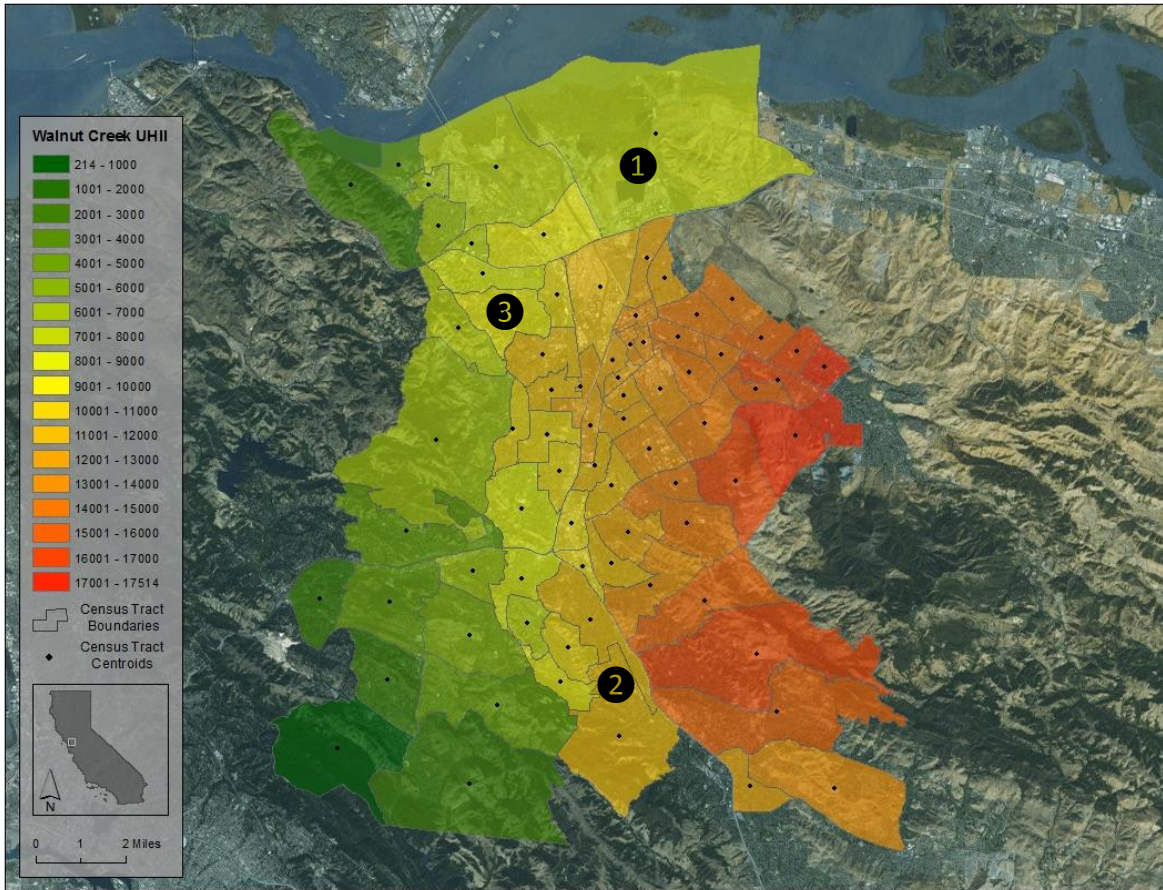


Figure C20: Vallejo area UHII (top) and CalEnviroScreen (bottom) scores. (Scales are not comparable)



CalEnviroScreen 2.0 results

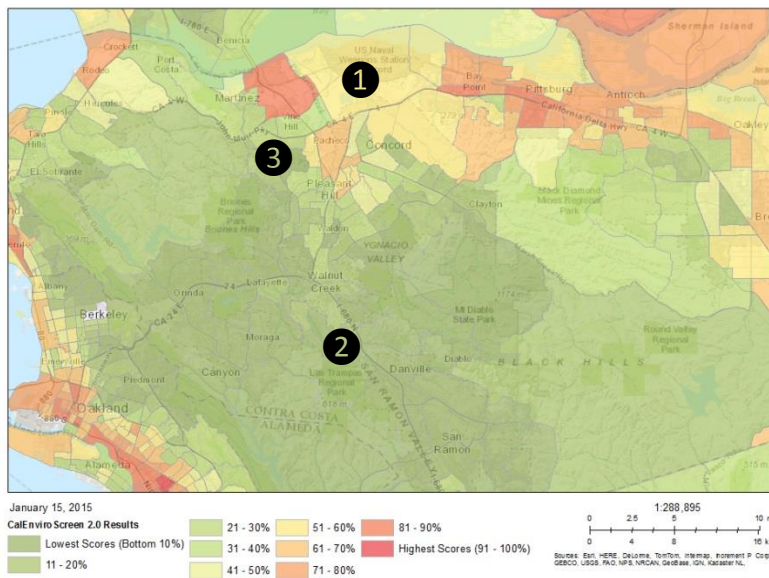
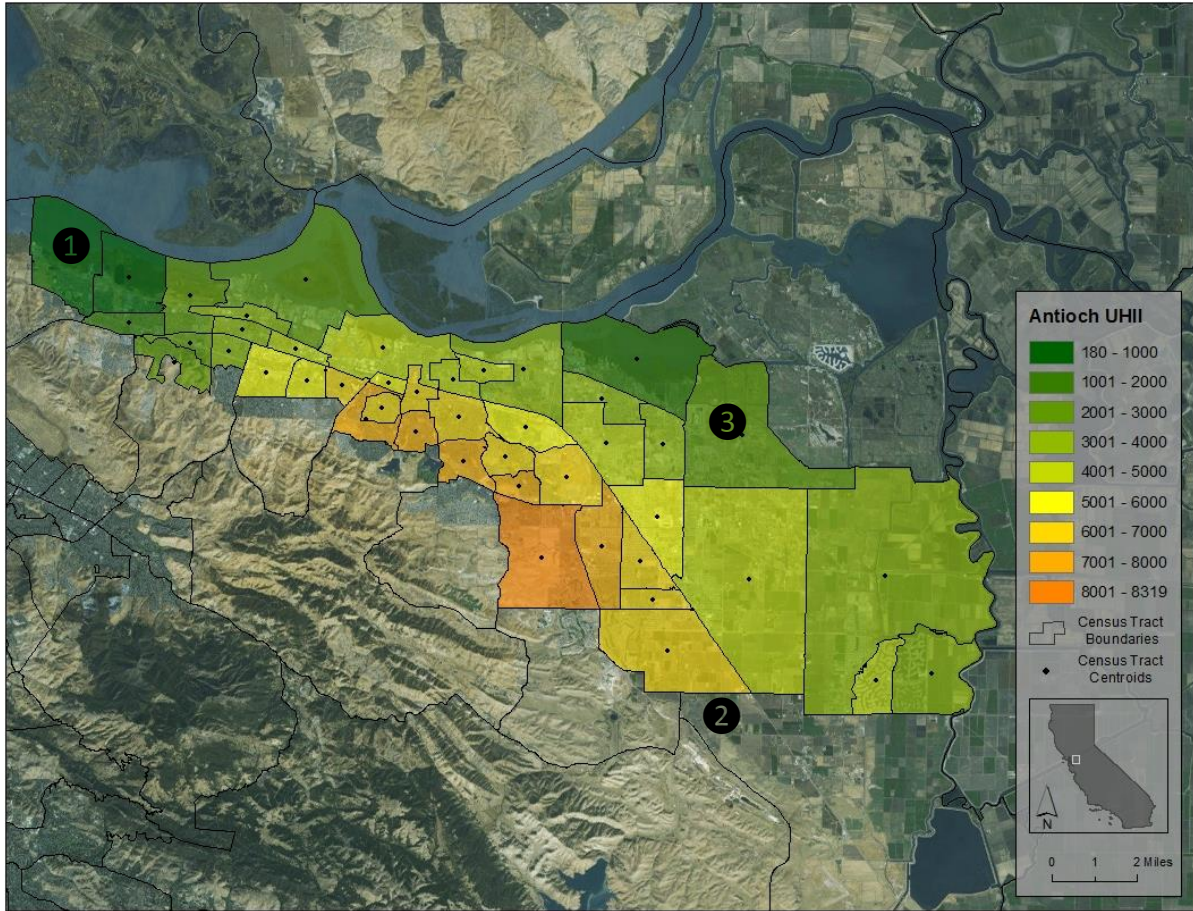


Figure C21: Martinez, Concord, Pleasant Hill, and Walnut Creek areas UHII (top) and CalEnviroScreen (bottom) scores. (Scales are not comparable)



CalEnviroScreen 2.0 results

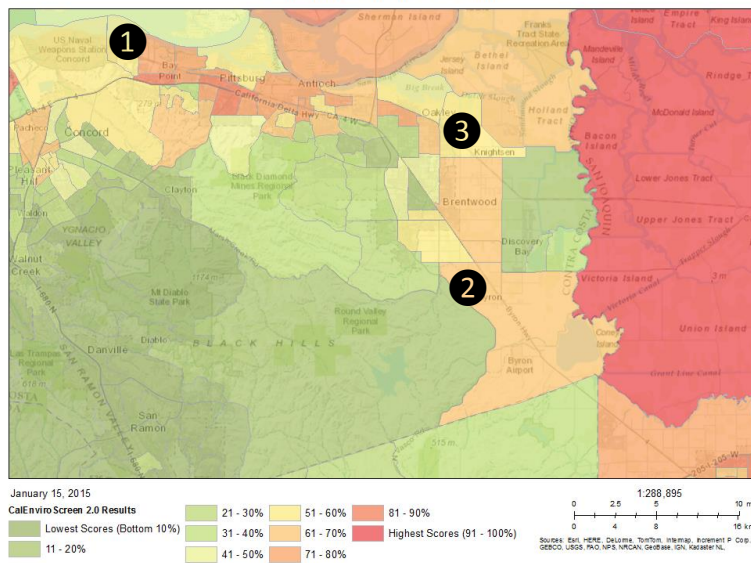
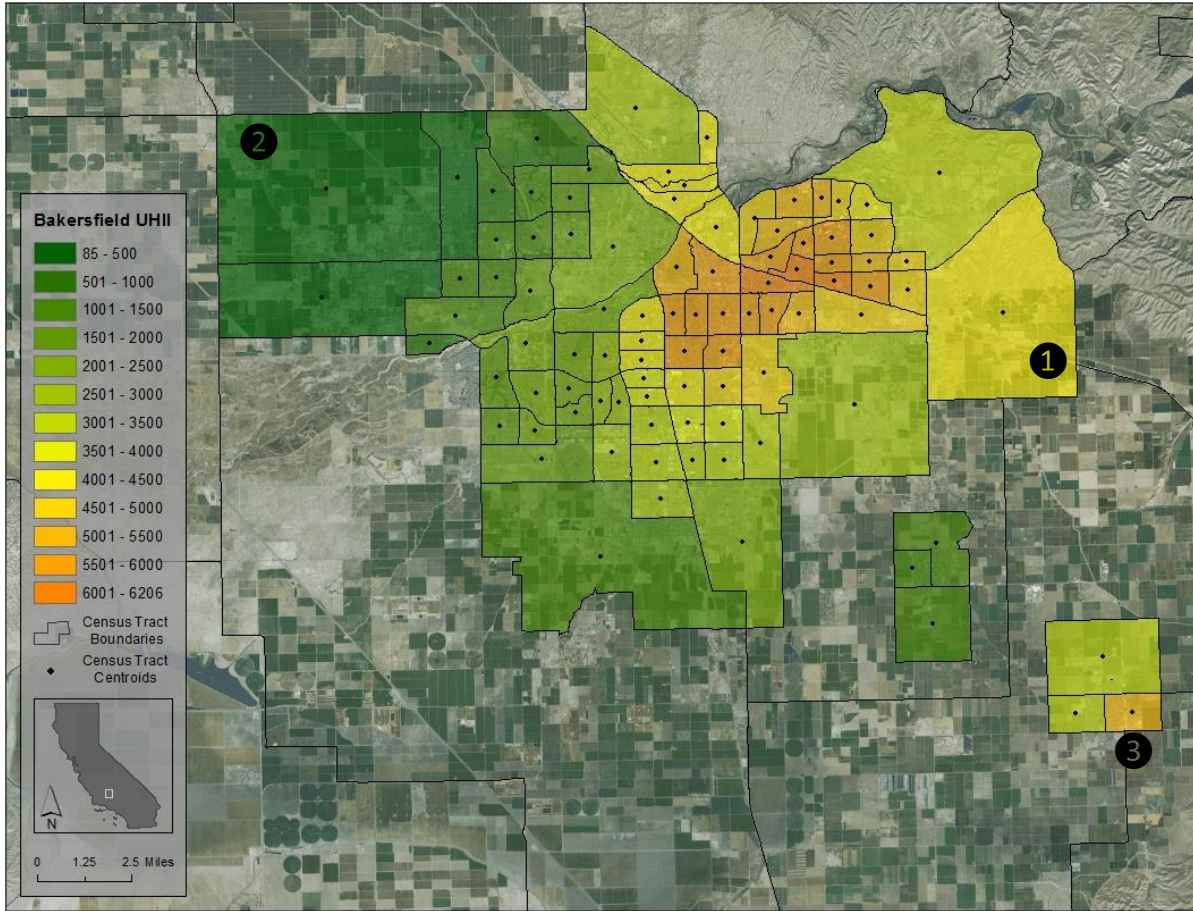


Figure C22: Antioch area UHII (top) and CalEnviroScreen (bottom) scores. (Scales are not comparable)



CalEnviroScreen 2.0 results

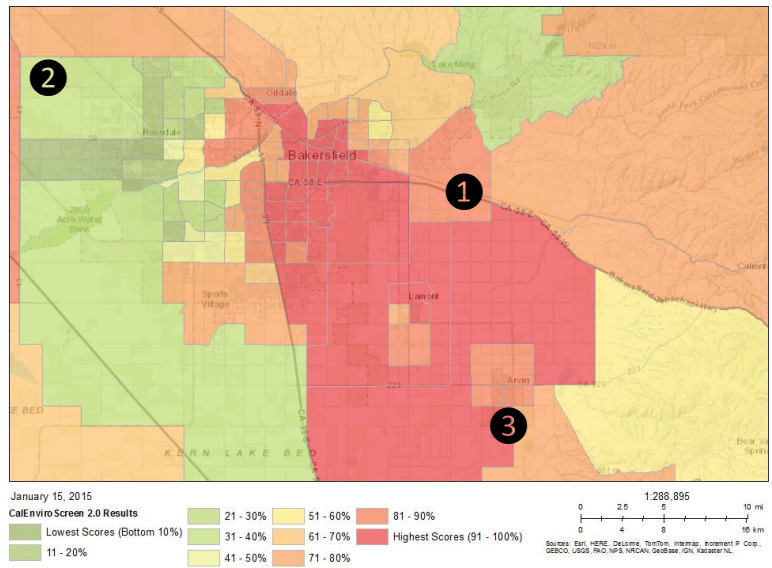
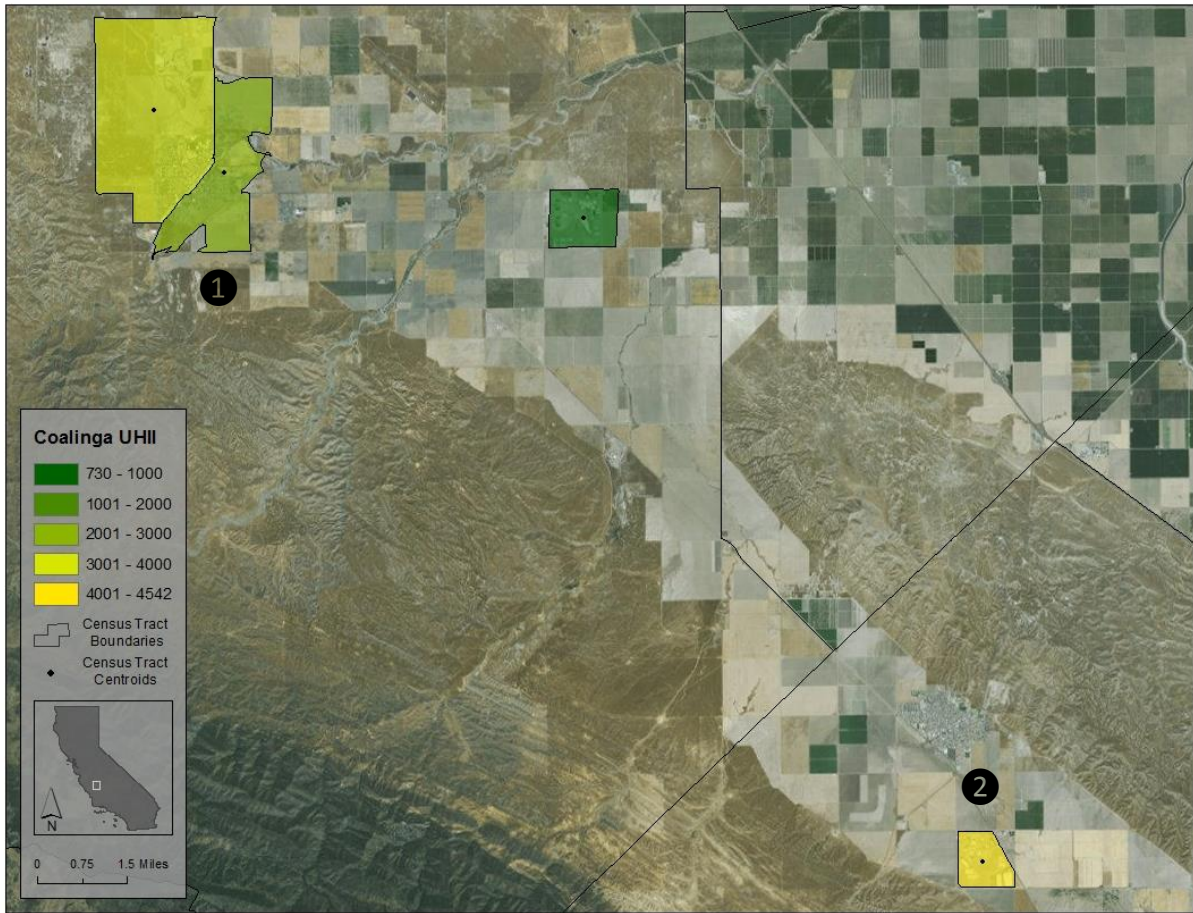


Figure C23: Bakersfield area UHII (top) and CalEnviroScreen (bottom) scores. (Scales are not comparable)





CalEnviroScreen 2.0 results

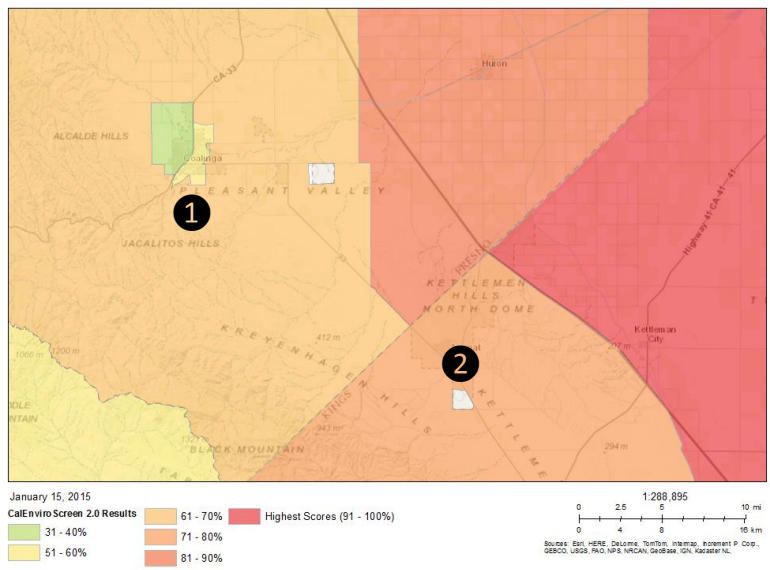
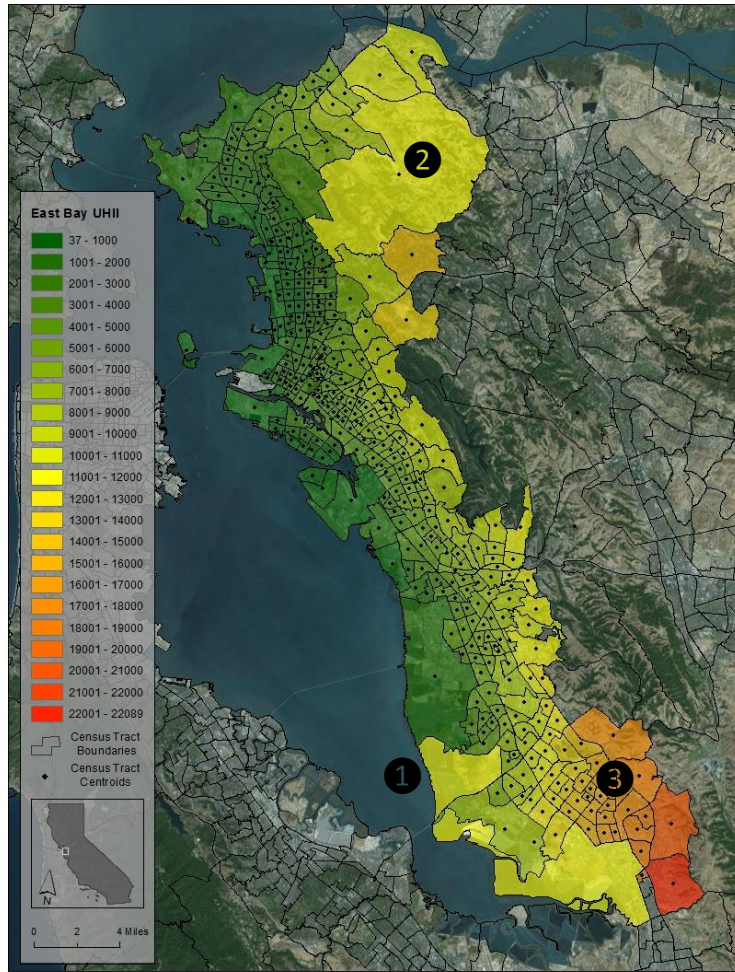


Figure C24: Coalinga and Avenal areas UHII (top) and CalEnviroScreen (bottom) scores. (Scales are not comparable)



CalEnviroScreen 2.0 results

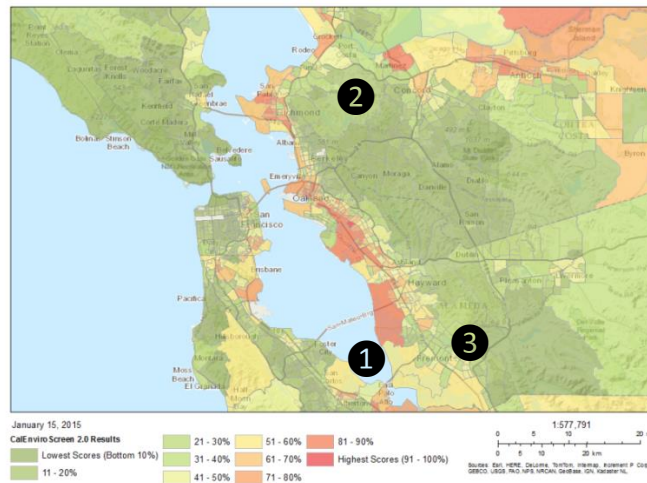


Figure C25: East Bay area UHII (top) and CalEnviroScreen (bottom) scores. (Scales are not comparable)

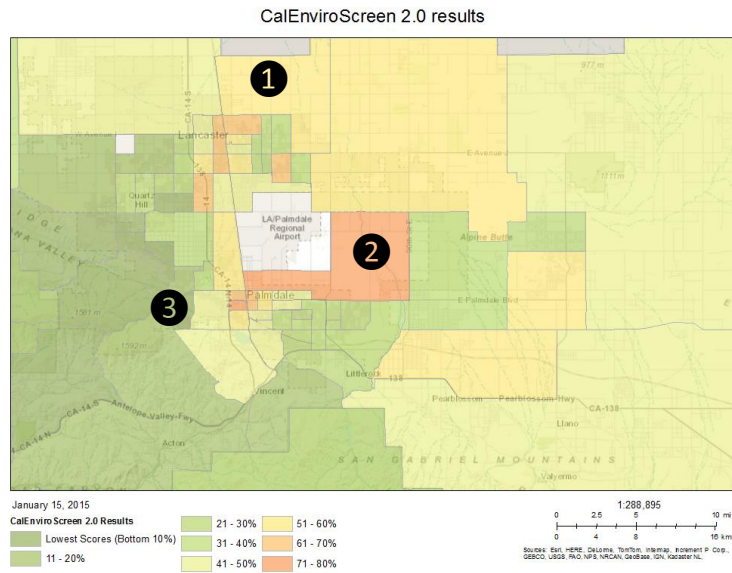
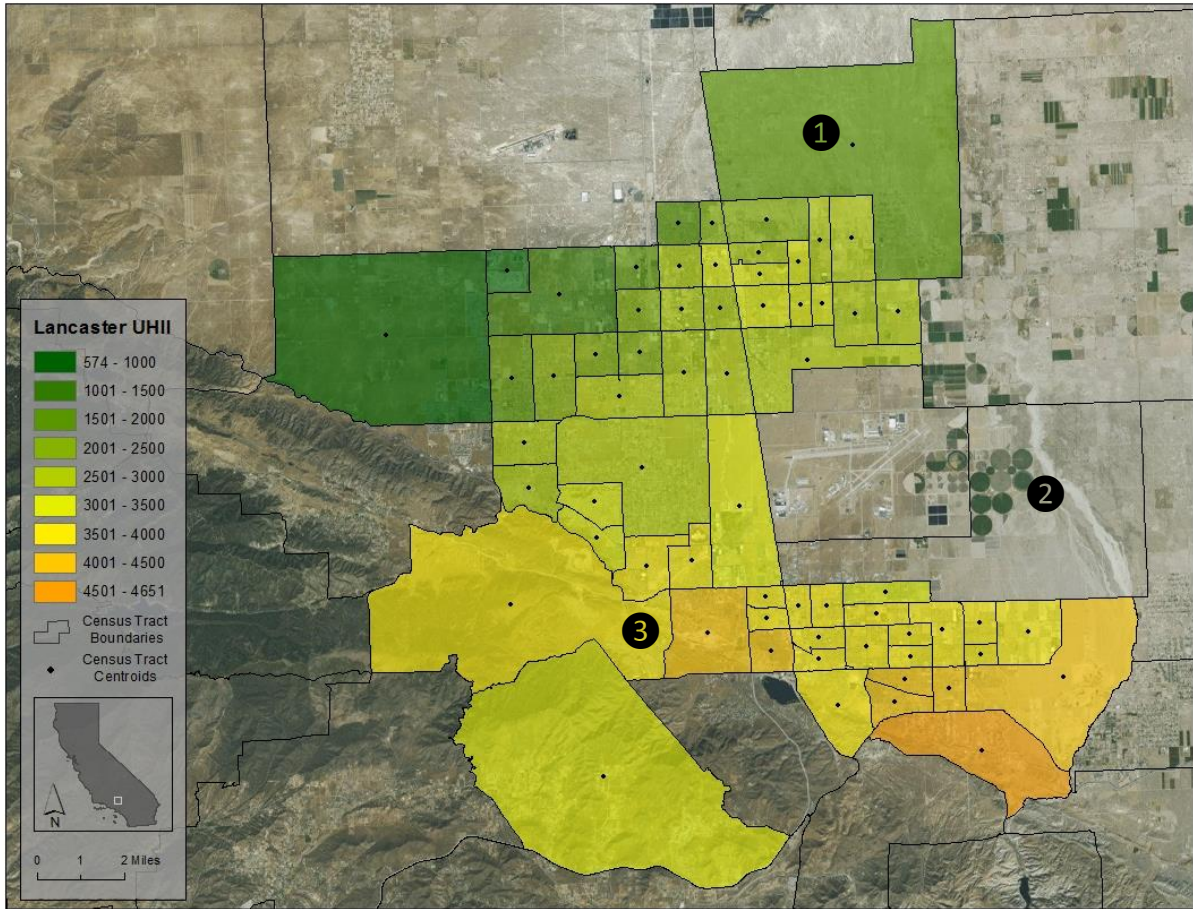
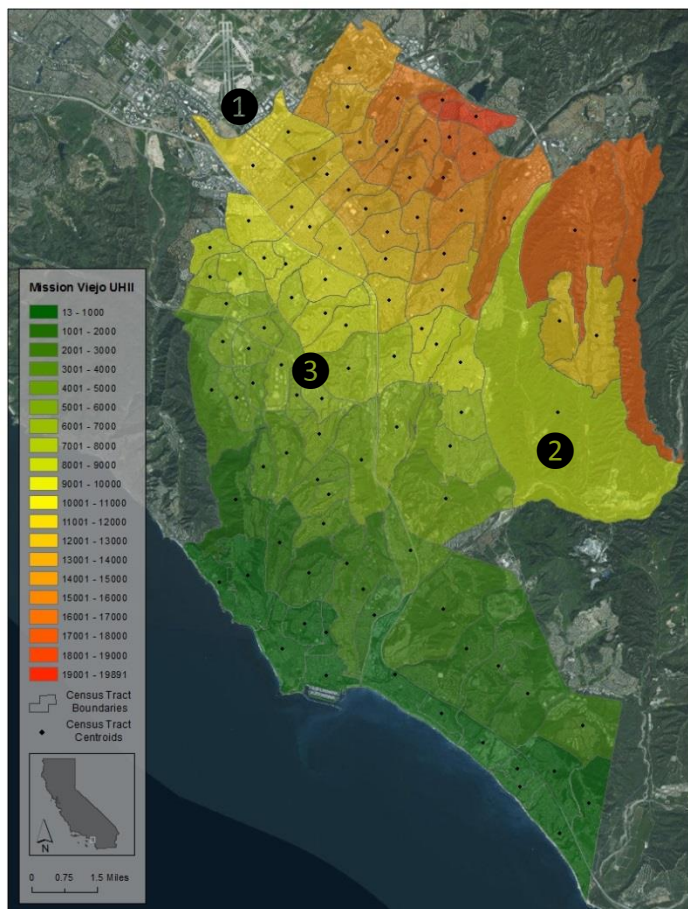


Figure C26: Lancaster and Palmdale areas UHII (top) and CalEnviroScreen (bottom) scores. (Scales are not comparable)



CalEnviroScreen 2.0 results

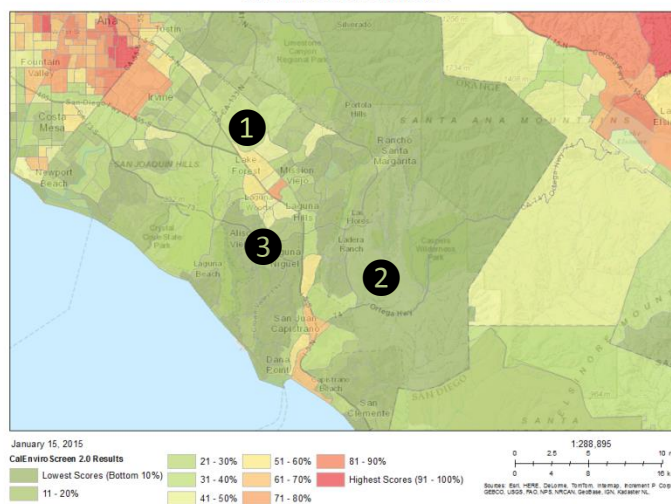
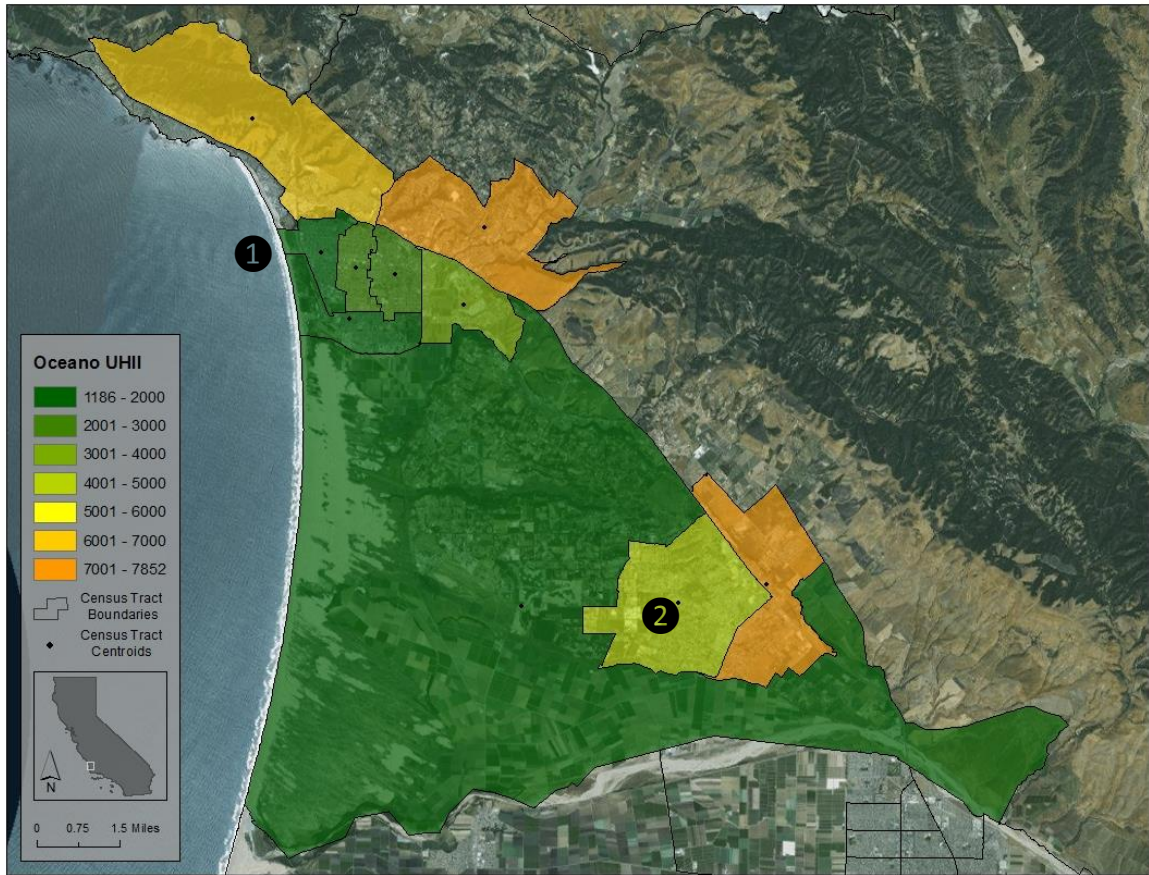


Figure C27: Mission Viejo area UHII (top) and CalEnviroScreen (bottom) scores. (Scales are not comparable)



CalEnviroScreen 2.0 results

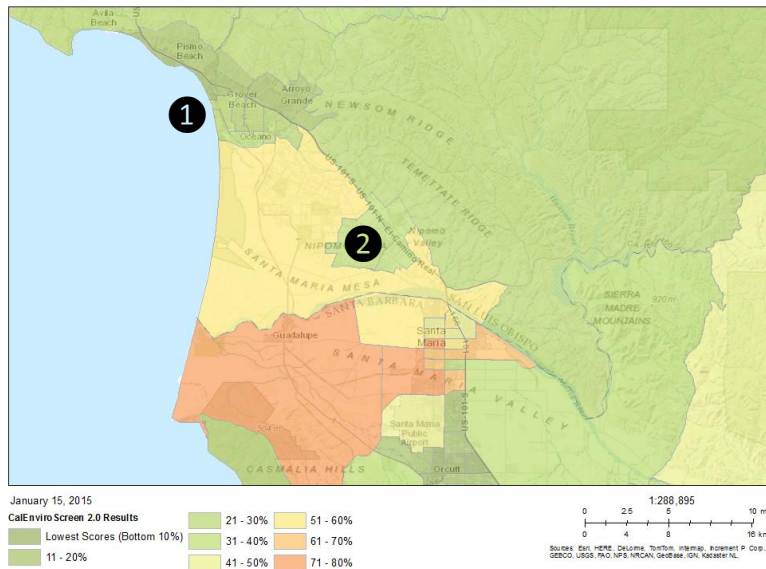


Figure C28: Pismo Beach and Oceano areas UHII (top) and CalEnviroScreen (bottom) scores. (Scales are not comparable)

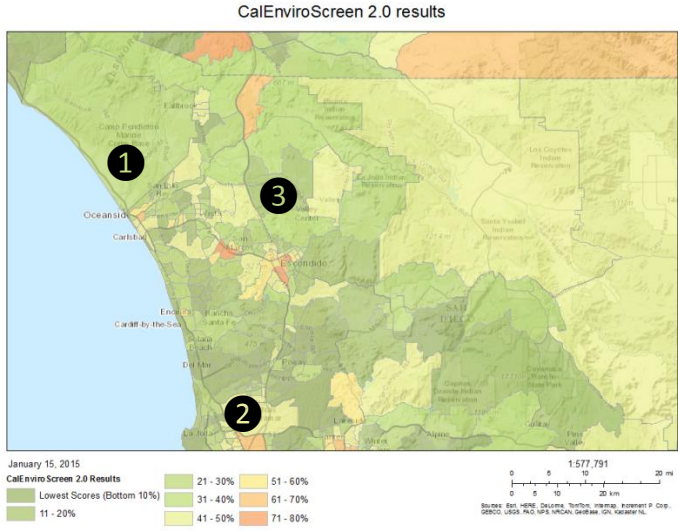
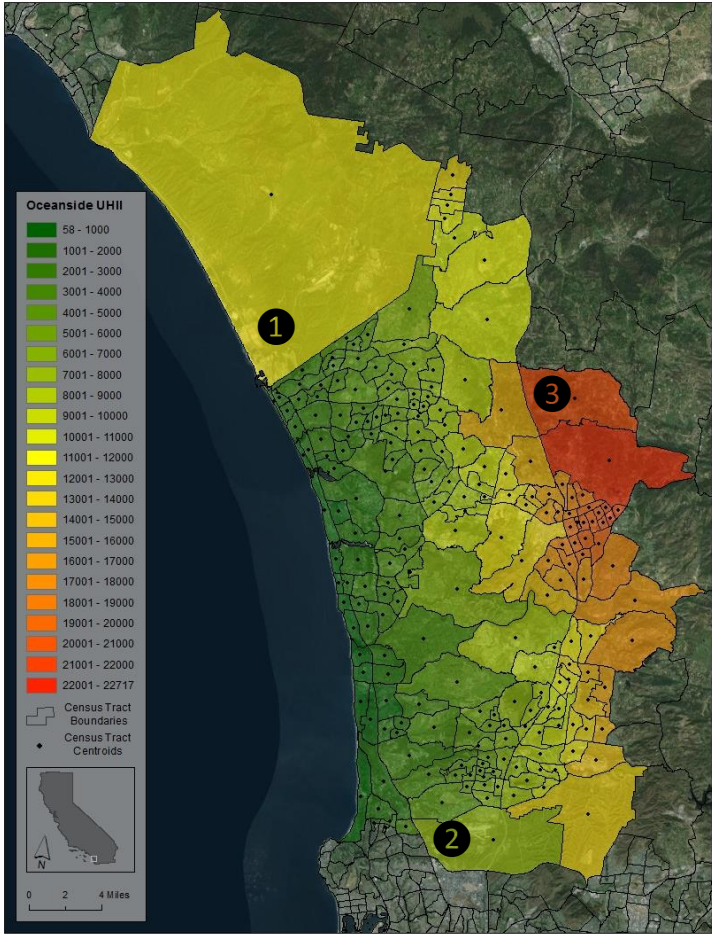
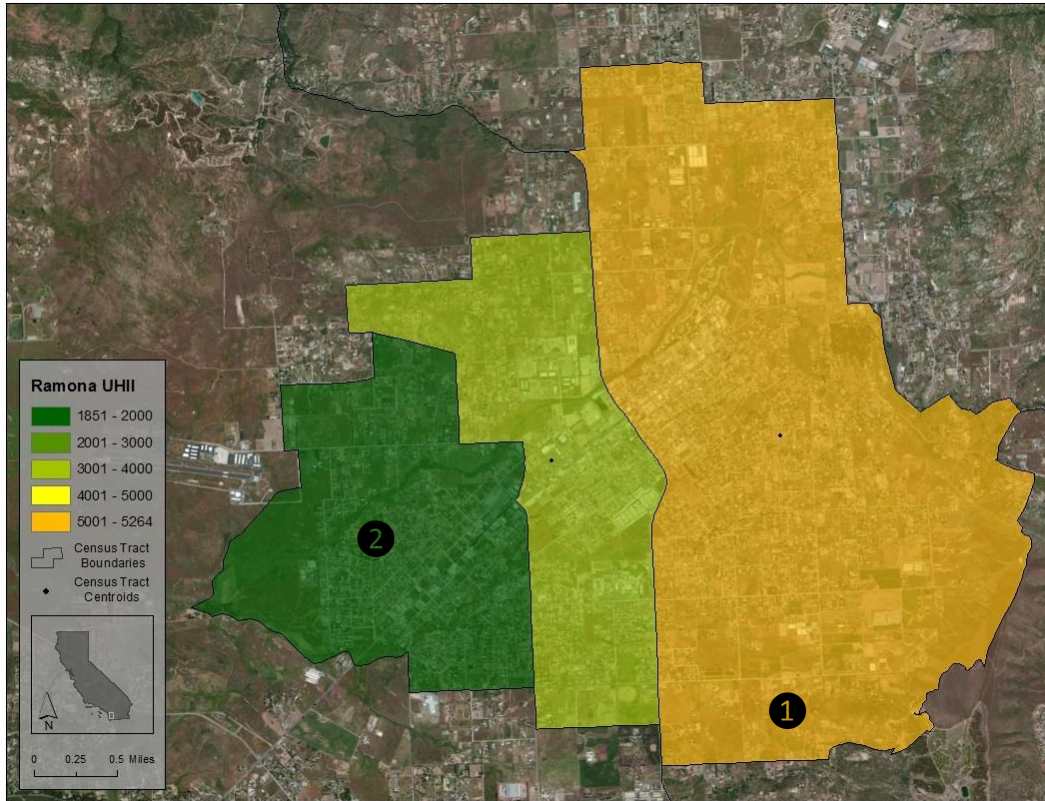


Figure C29: Oceanside area UHI (top) and CalEnviroScreen (bottom) scores. (Scales are not comparable)



CalEnviroScreen 2.0 results

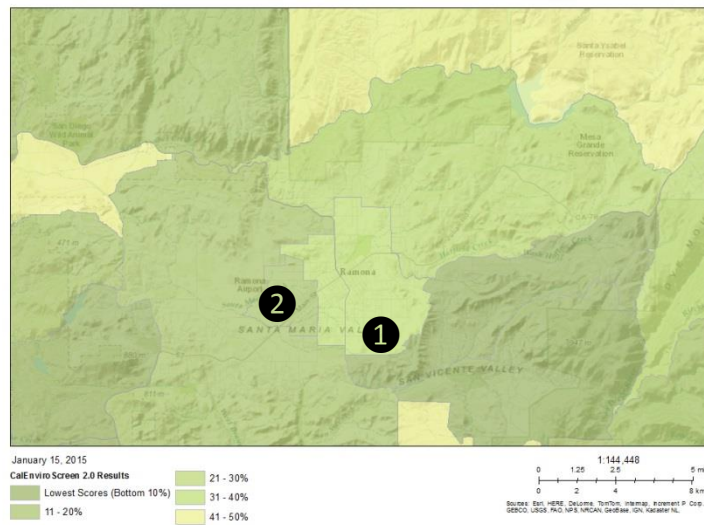


Figure C30: Ramona area UHII (top) and CalEnviroScreen (bottom) scores. (Scales are not comparable)

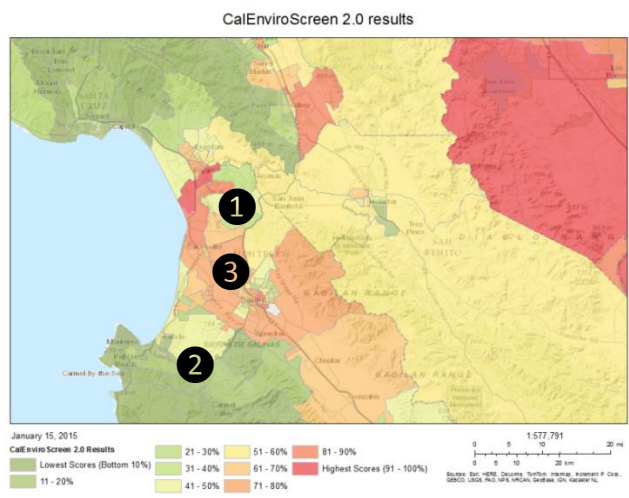
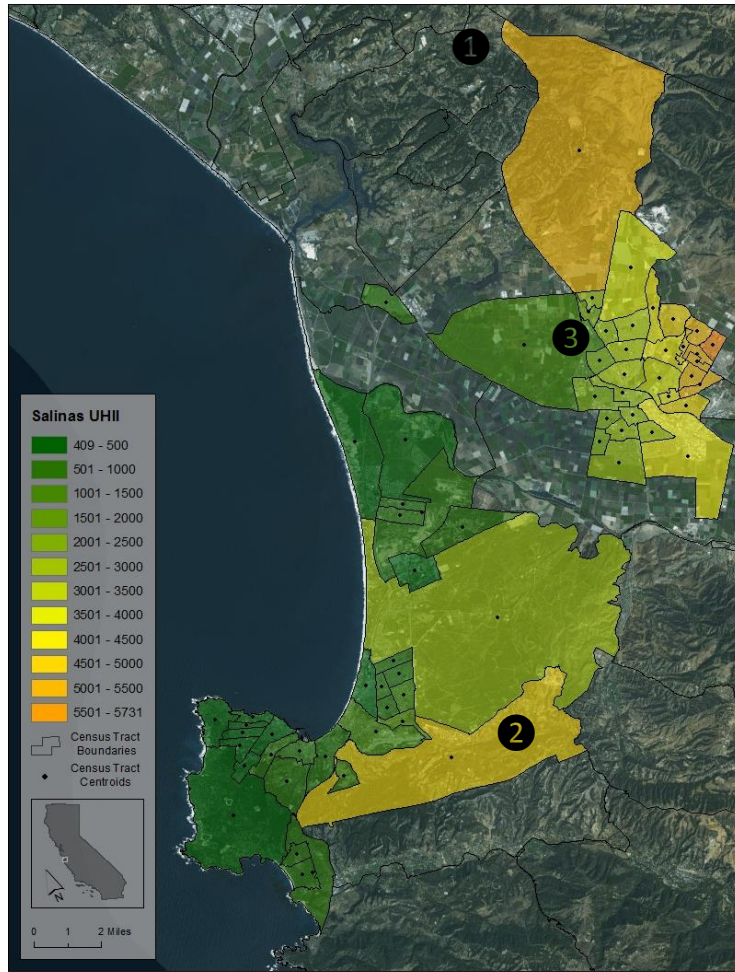
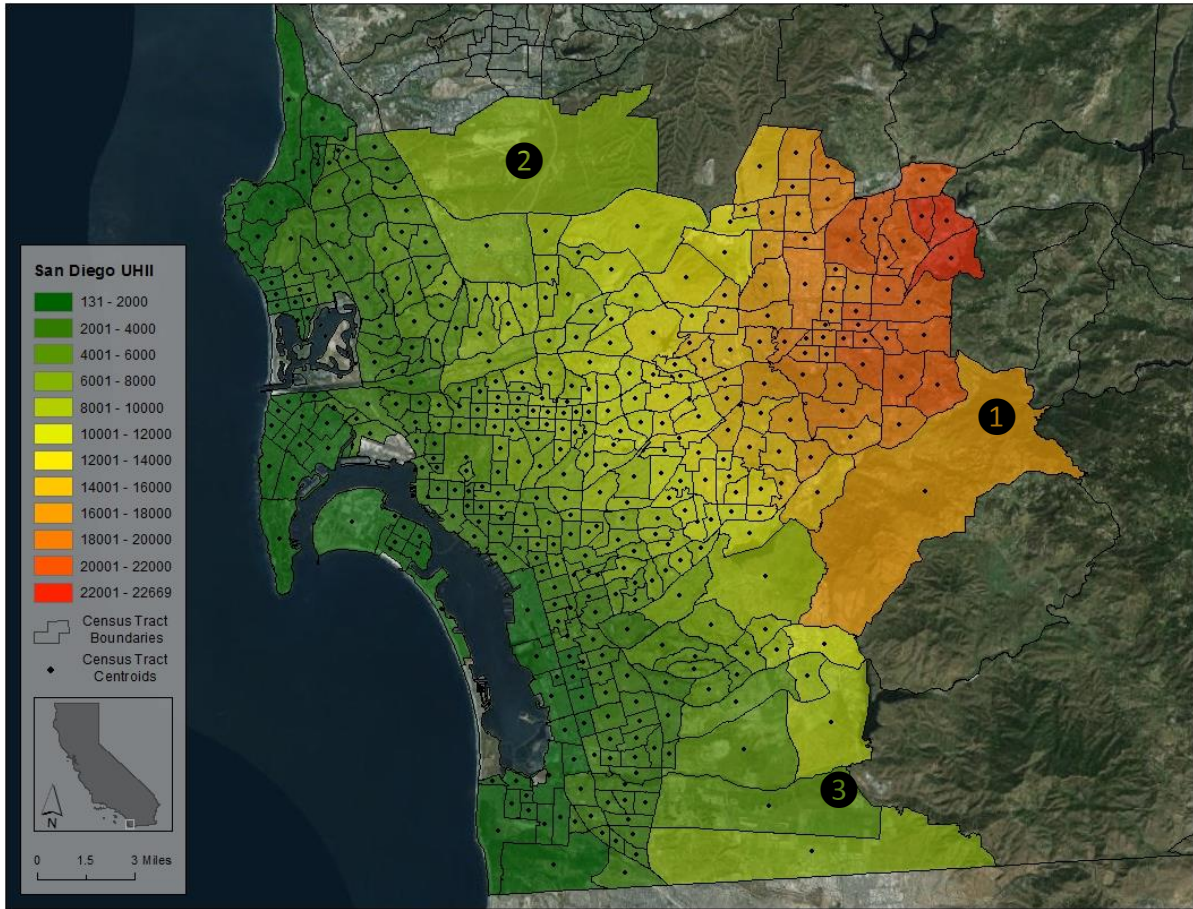


Figure C31: Monterey, Salinas, and Castroville areas UHII (top) and CalEnviroScreen (bottom) scores. (Scales are not comparable)





CalEnviroScreen 2.0 results

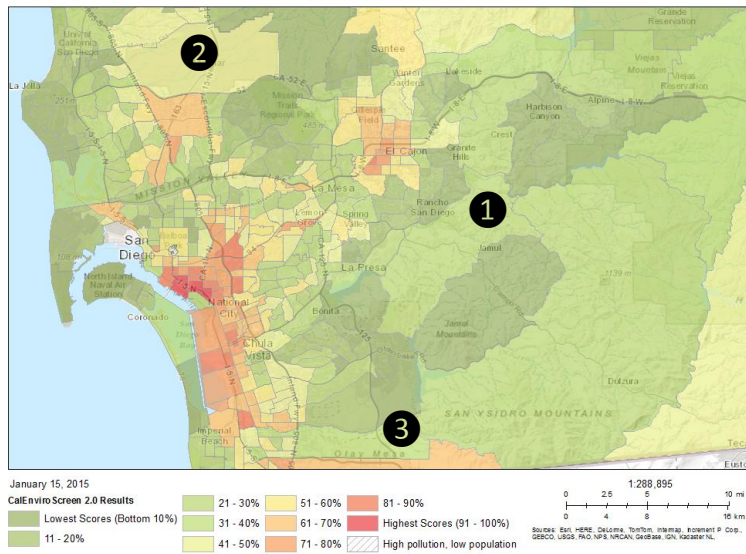
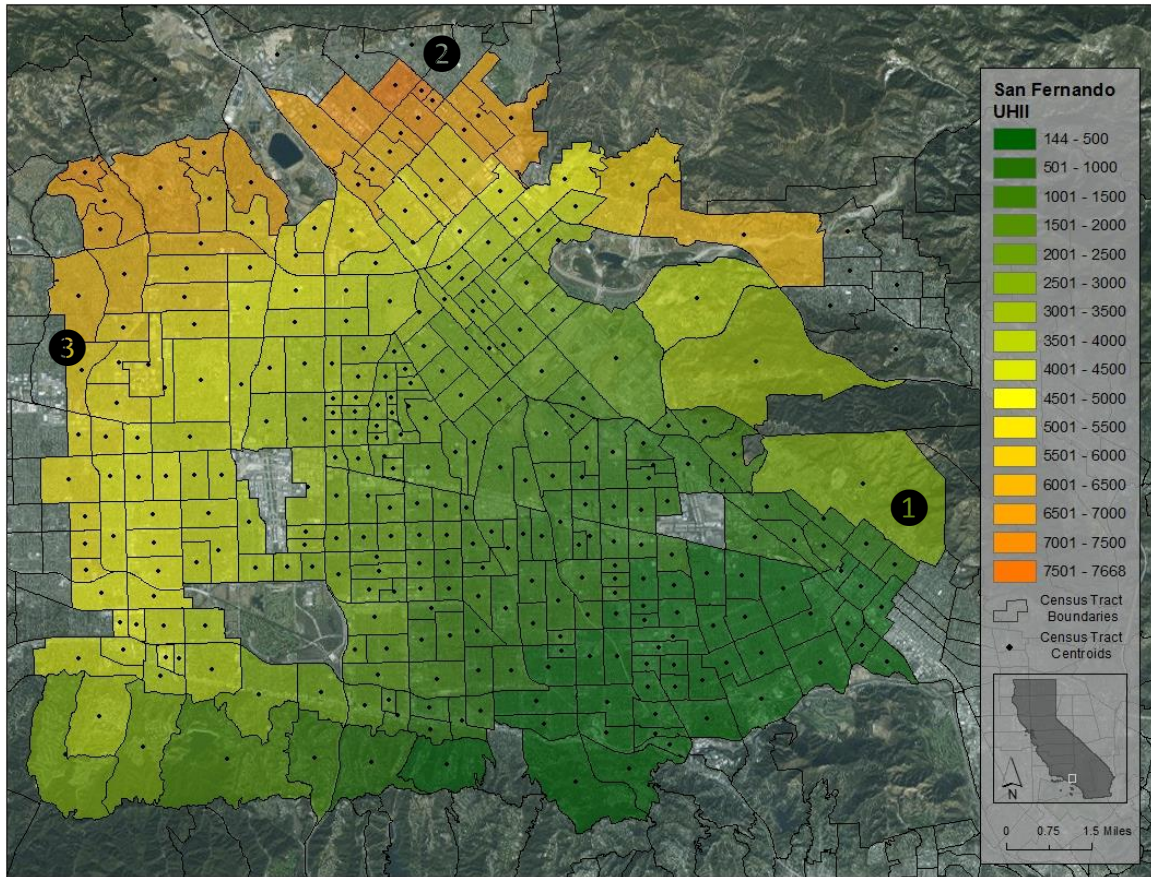


Figure C32: San Diego area UHI (top) and CalEnviroScreen (bottom) scores. (Scales are not comparable)



CalEnviroScreen 2.0 results

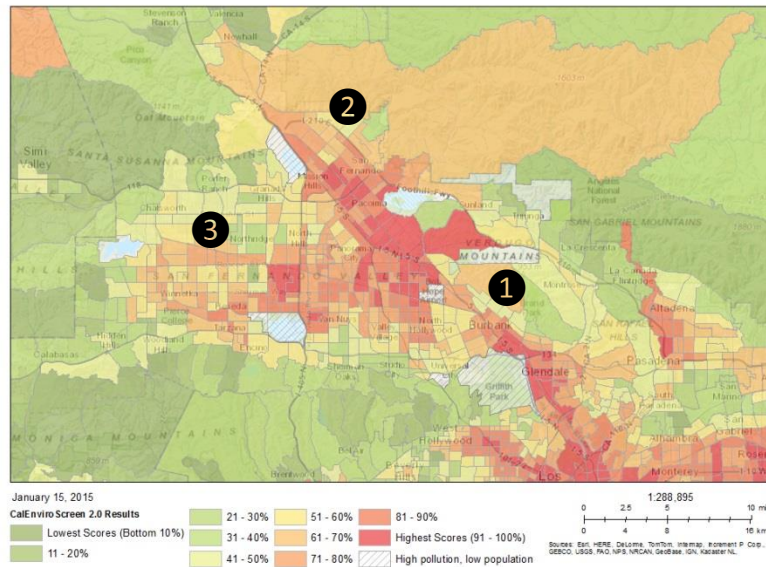
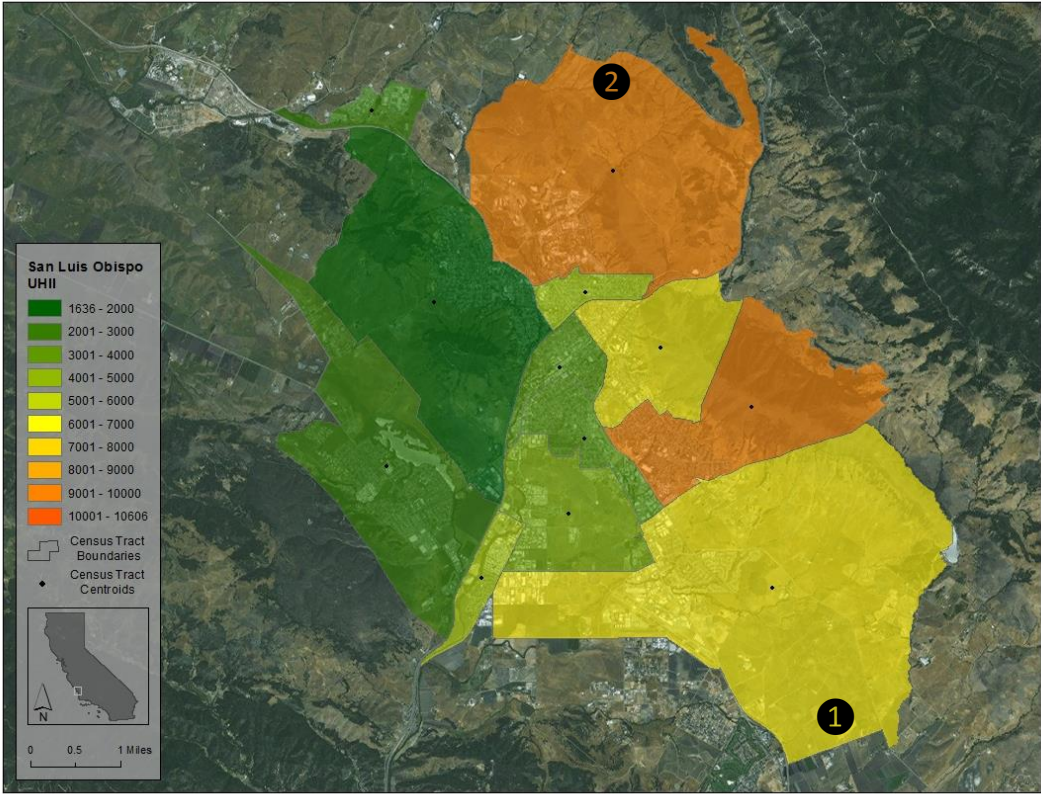


Figure C33: San Fernando Valley UHI (top) and CalEnviroScreen (bottom) scores. (Scales are not comparable)



CalEnviroScreen 2.0 results

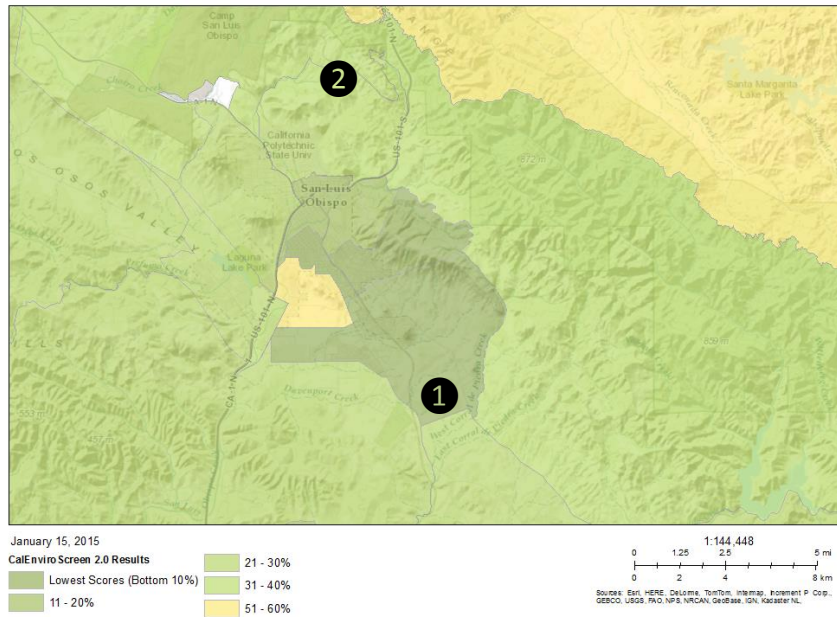
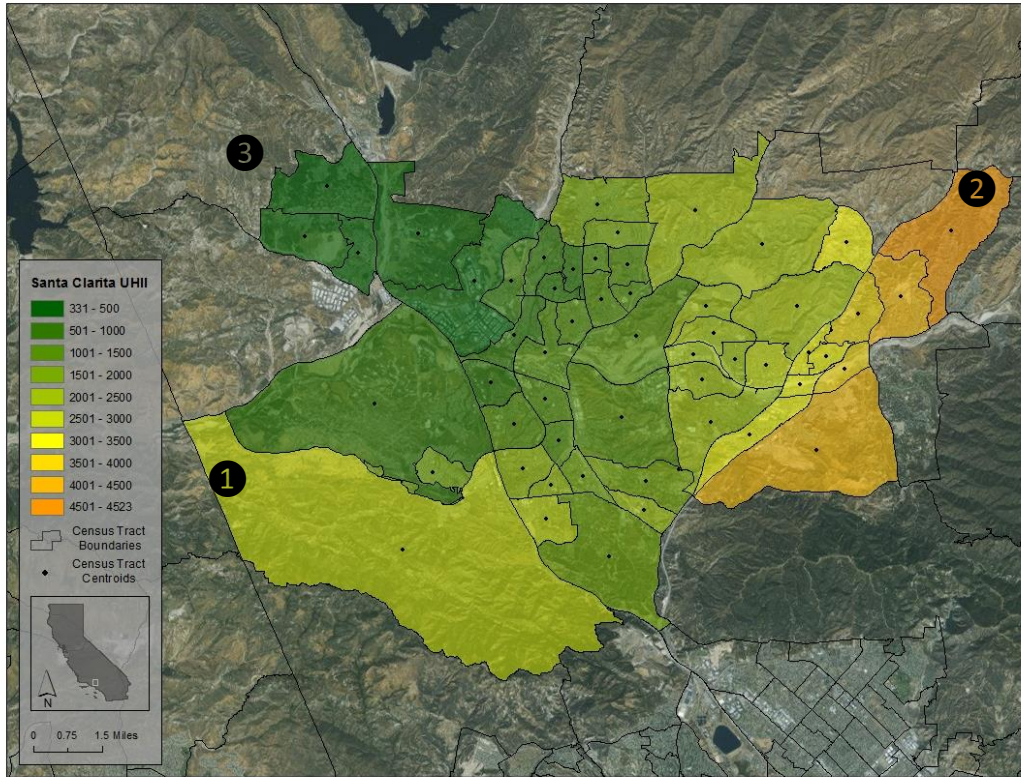


Figure C34: San Luis Obispo area UHII (top) and CalEnviroScreen (bottom) scores. (Scales are not comparable)



CalEnviroScreen 2.0 results

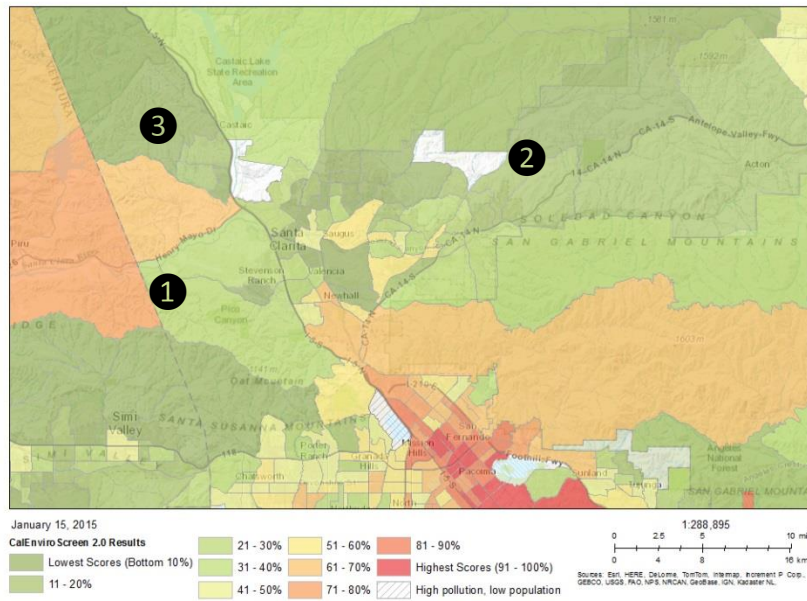
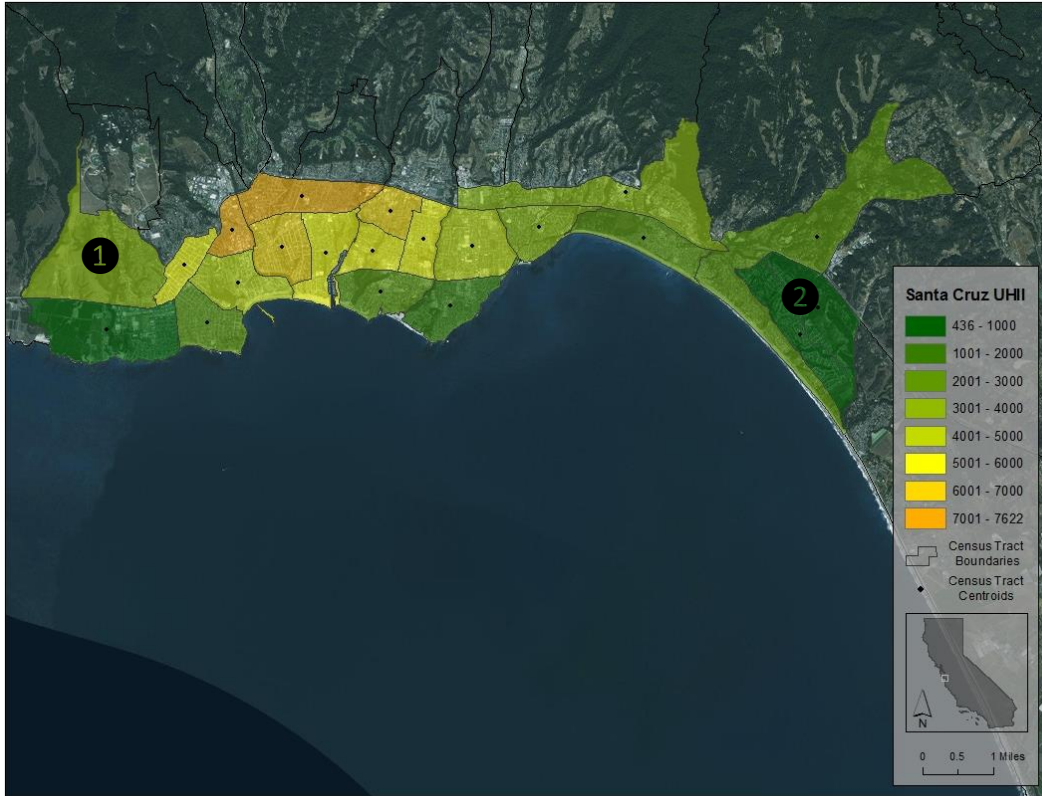


Figure C35: Santa Clarita area UHII (top) and CalEnviroScreen (bottom) scores. (Scales are not comparable)



CalEnviroScreen 2.0 results

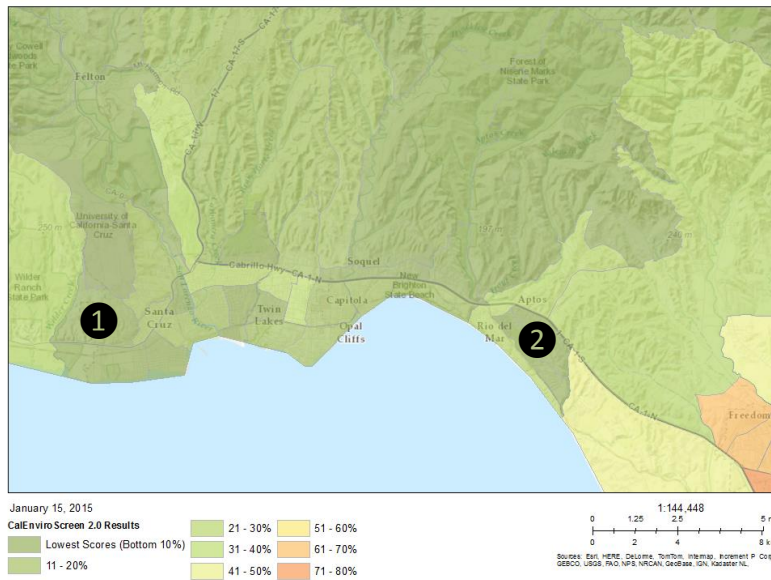
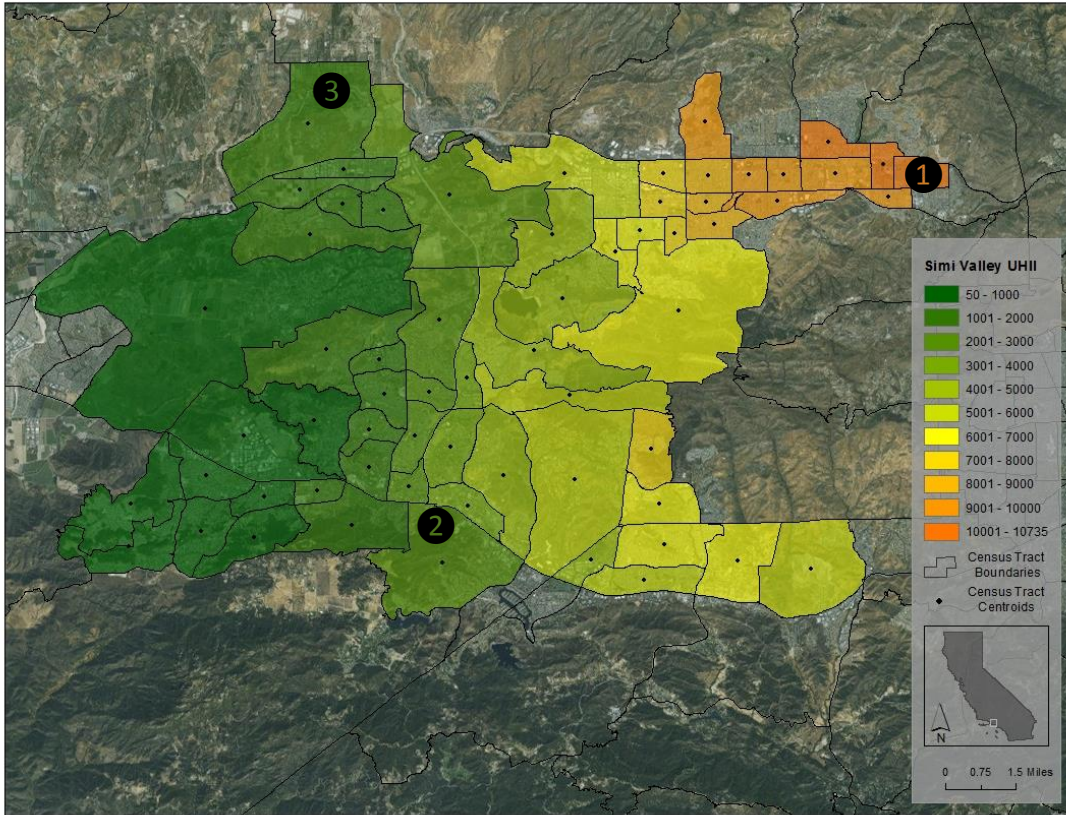


Figure C36: Santa Cruz area UHII (top) and CalEnviroScreen (bottom) scores. (Scales are not comparable)



CalEnviroScreen 2.0 results

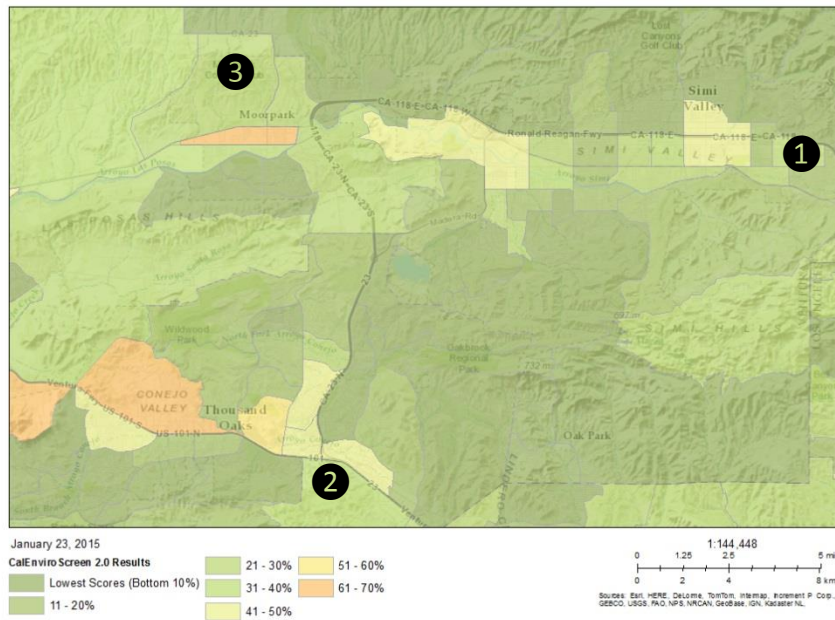
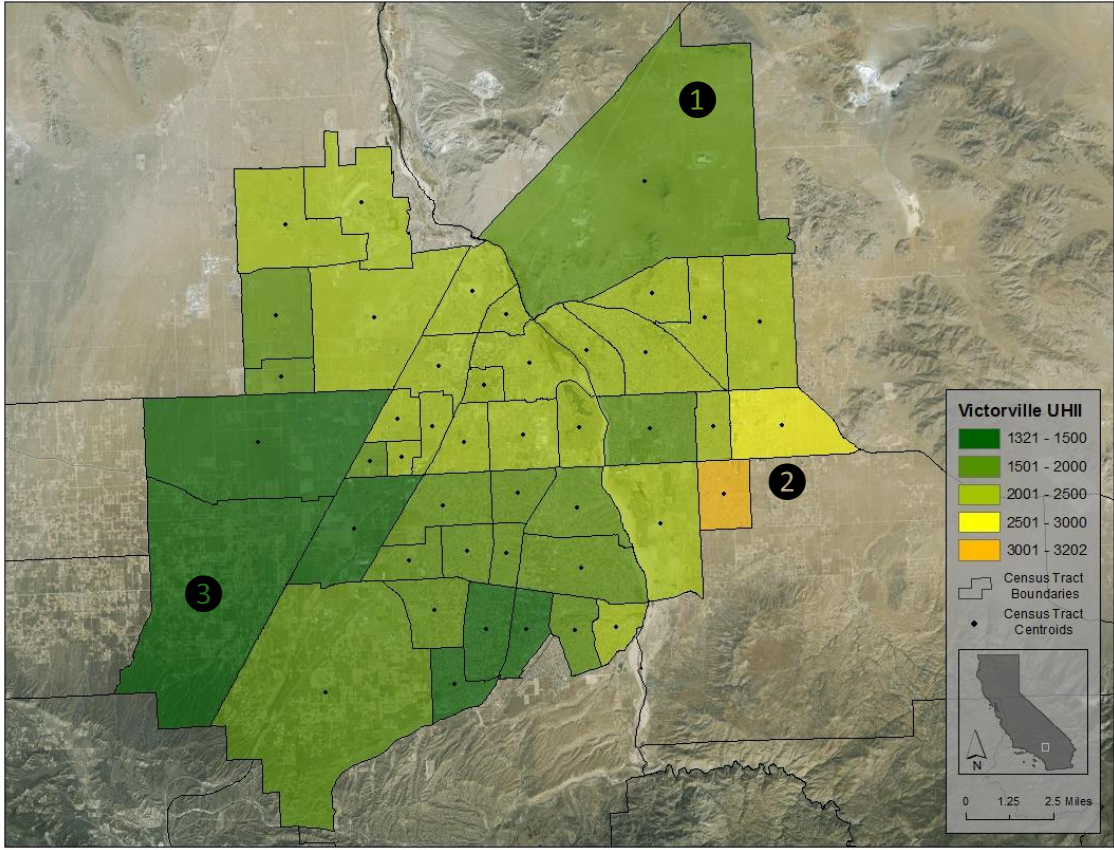


Figure C37: Simi Valley and Thousand Oaks areas UHII (top) and CalEnviroScreen (bottom) scores. (Scales are not comparable)



CalEnviroScreen 2.0 results

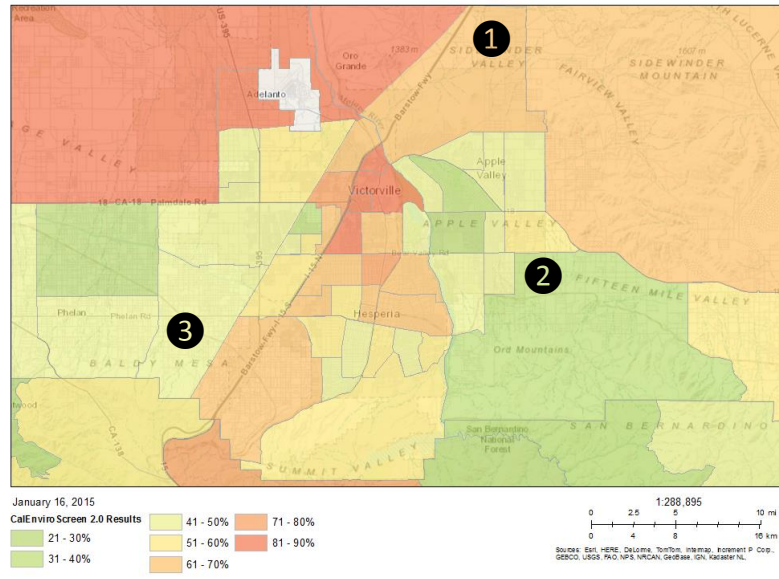
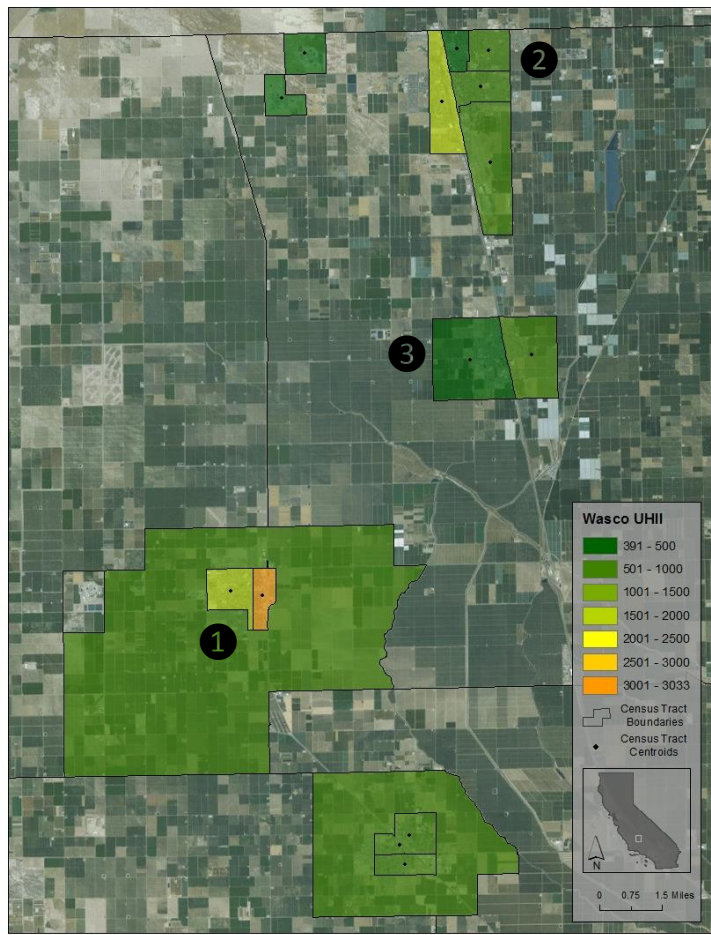


Figure C38: Victorville area UHII (top) and CalEnviroScreen (bottom) scores. (Scales are not comparable)



CalEnviroScreen 2.0 results

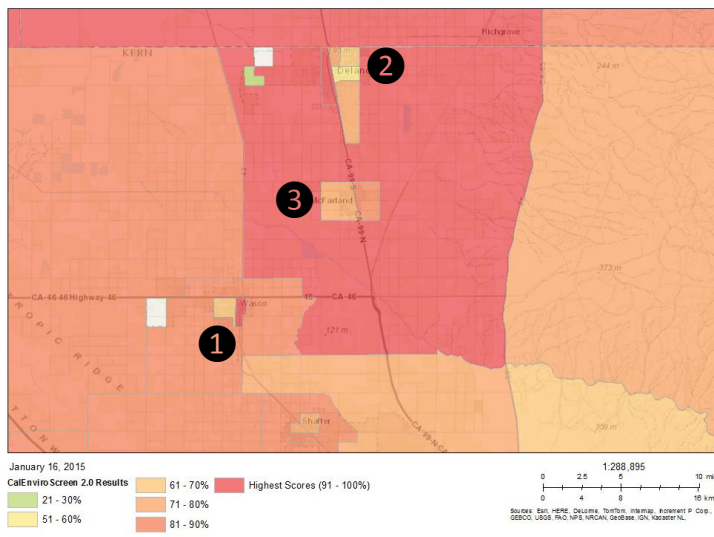
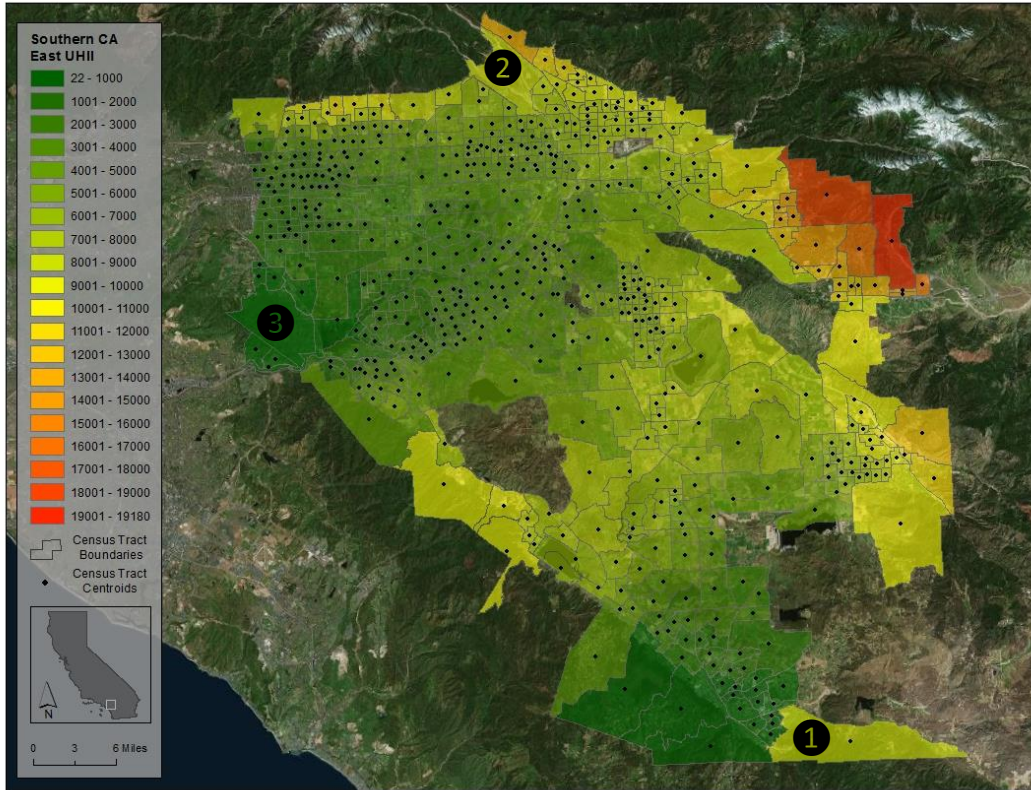


Figure C39: Delano, Wasco, and Shafter areas UHII (top) and CalEnviroScreen (bottom) scores. (Scales are not comparable)





CalEnviroScreen 2.0 results

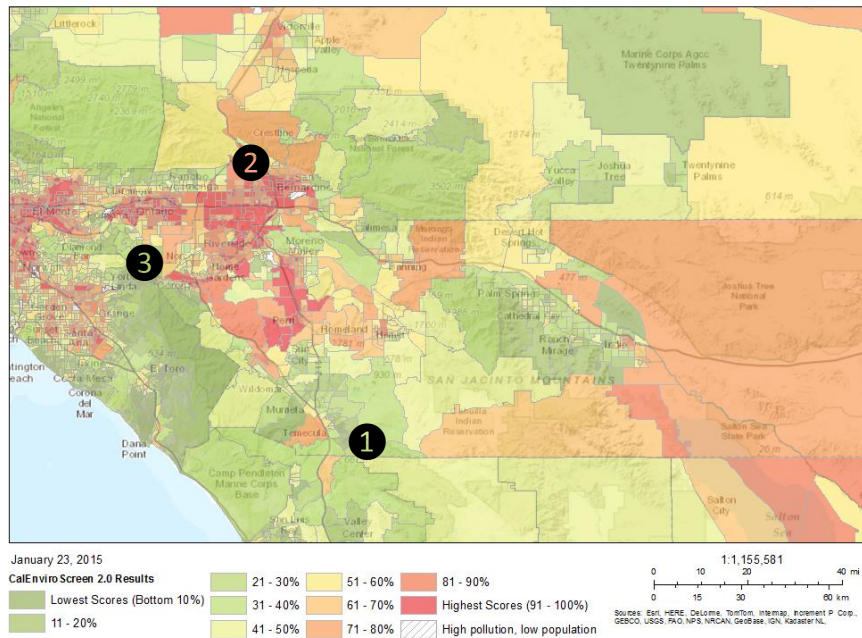
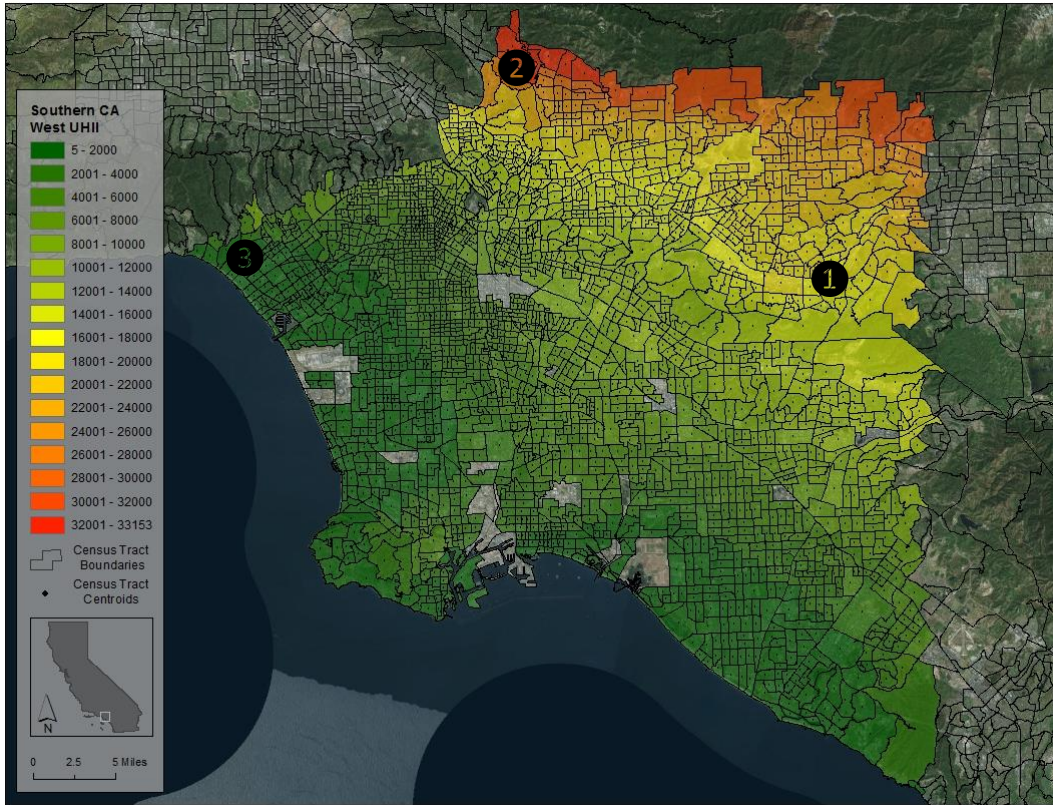


Figure C40: East Los Angeles Basin UHII (top) and CalEnviroScreen (bottom) scores. (Scales are not comparable). In this example, the east and west basin UHIIs are discontinuous.



CalEnviroScreen 2.0 results

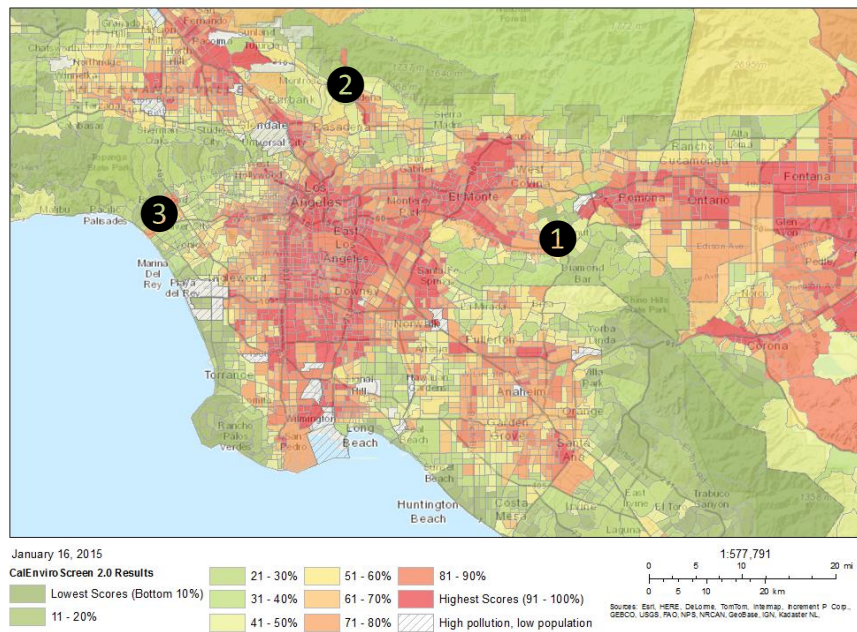


Figure C41: West Los Angeles Basin UHII (top) and CalEnviroScreen (bottom) scores. (Scales are not comparable). In this example, the east and west basin UHII are discontinuous.