

Appendix B

Figures **B1** through **B40**: UHII in units of degree-hours per day (DH/day), for various UHII tiles.

In this appendix, the plotted ranges of UHII, bins (intervals), and color codes are similar across the maps.

All maps are oriented with north pointing up. The dots represent the centroids of the census tracts.

This set is more useful for general inter-comparison across various areas in the state, whereas Appendix A provides more details for comparison of various regions within each urban area.

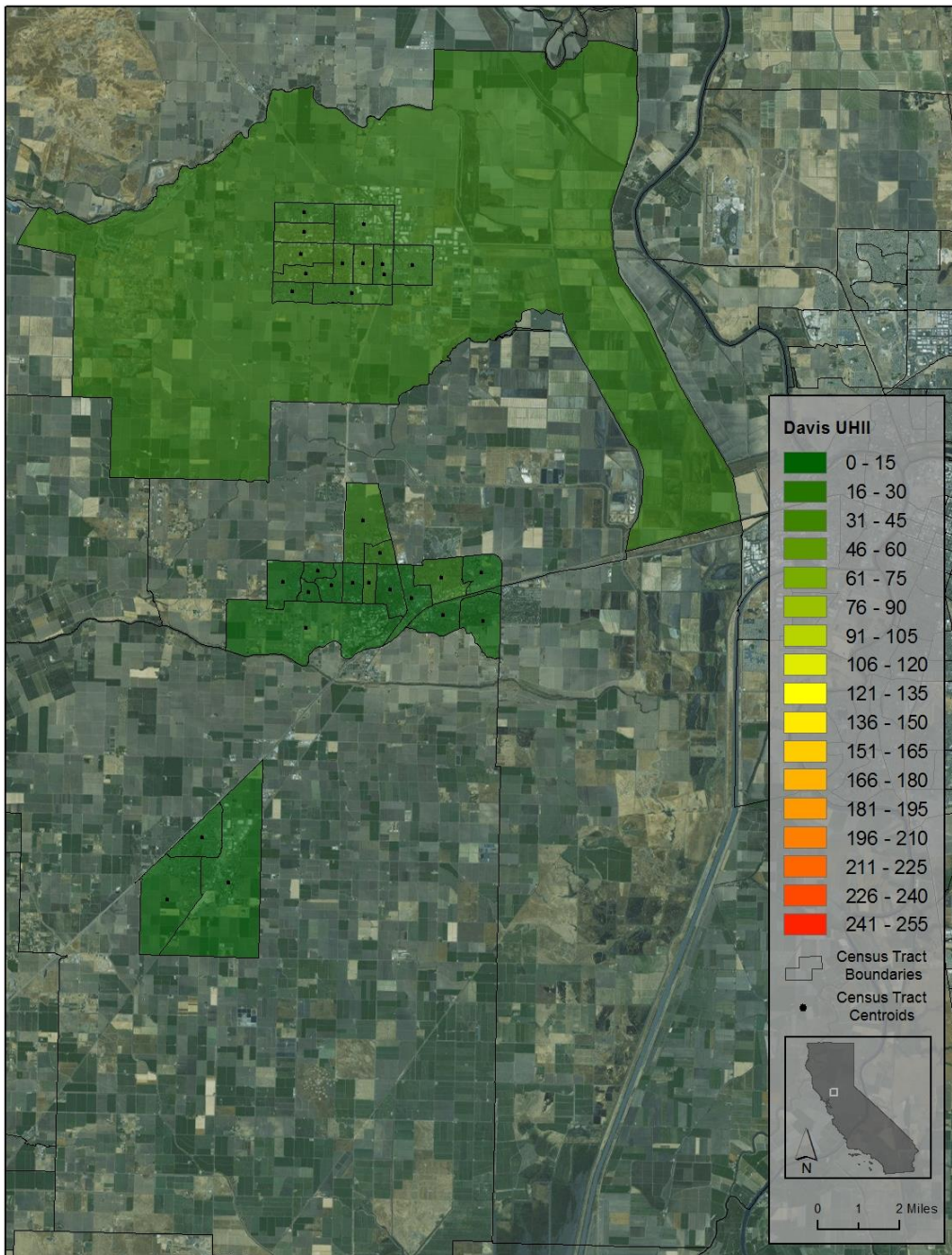


Figure B1: Woodland, Davis, and Dixon areas UHII (DH/day).
 Average temperature difference between warmest and coolest census tracts is 1.3°C.

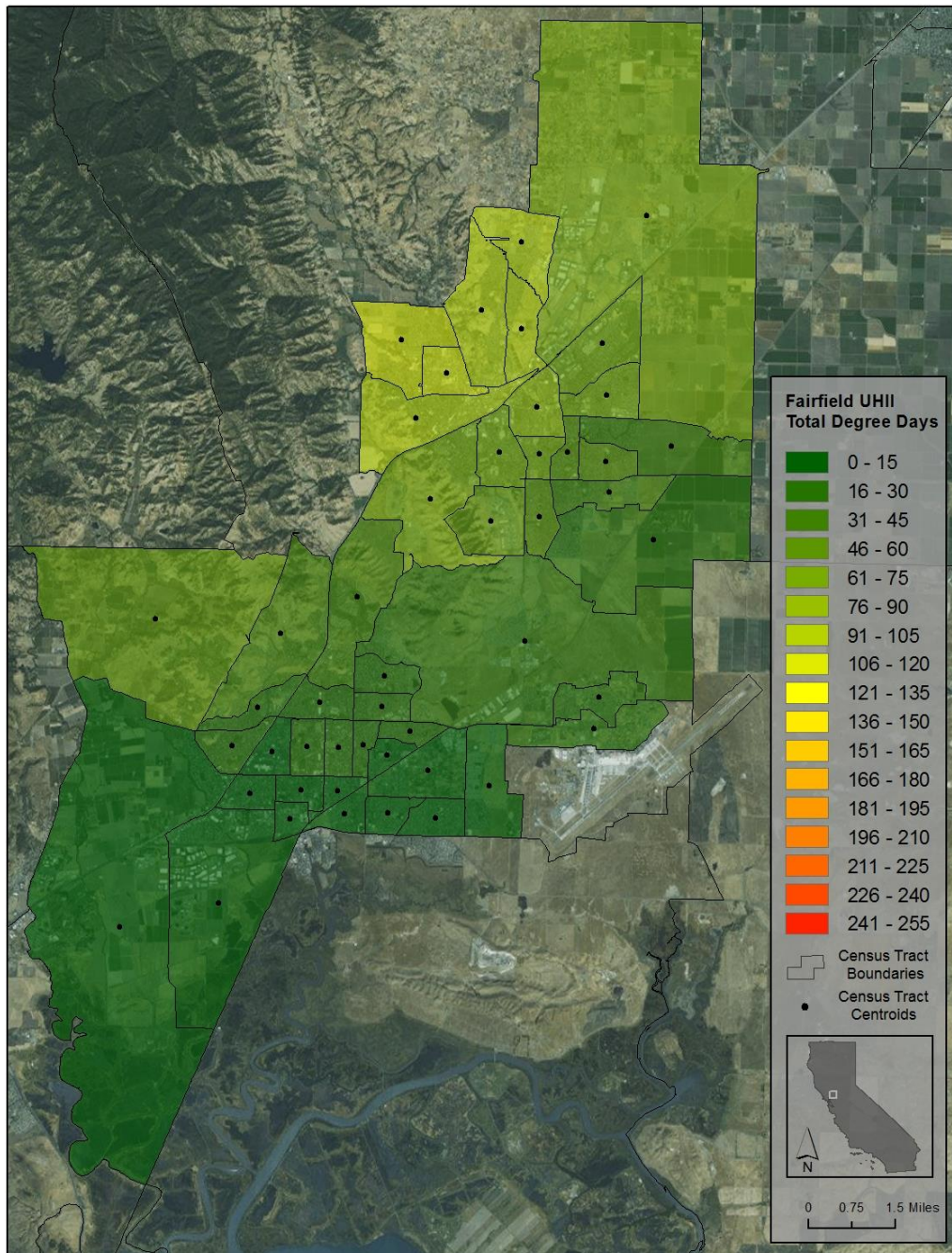


Figure B2: Fairfield and Vacaville areas UHII (DH/day).
 Average temperature difference between warmest and coolest census tracts is 4.6°C.

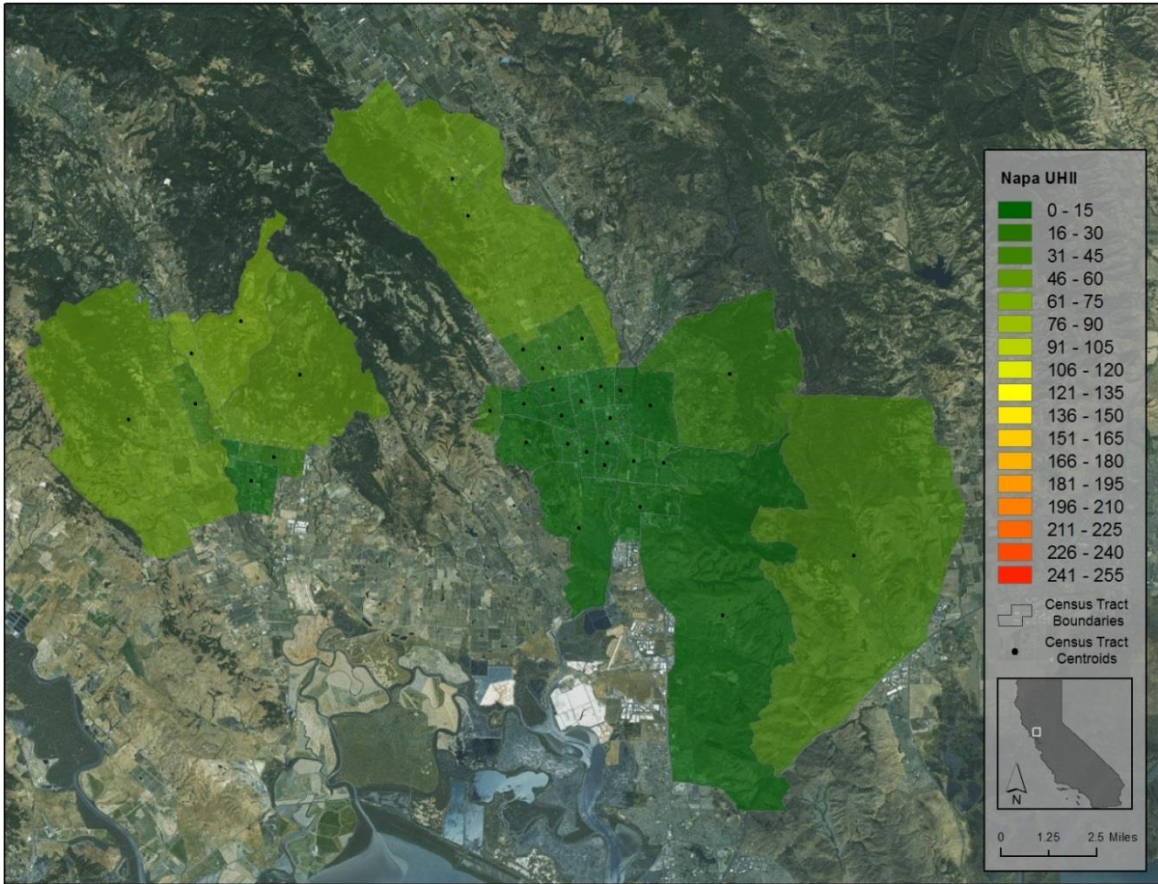


Figure B3: Napa and Sonoma areas UHII (DH/day).
Average temperature difference between warmest and coolest census tracts is 2.8°C.

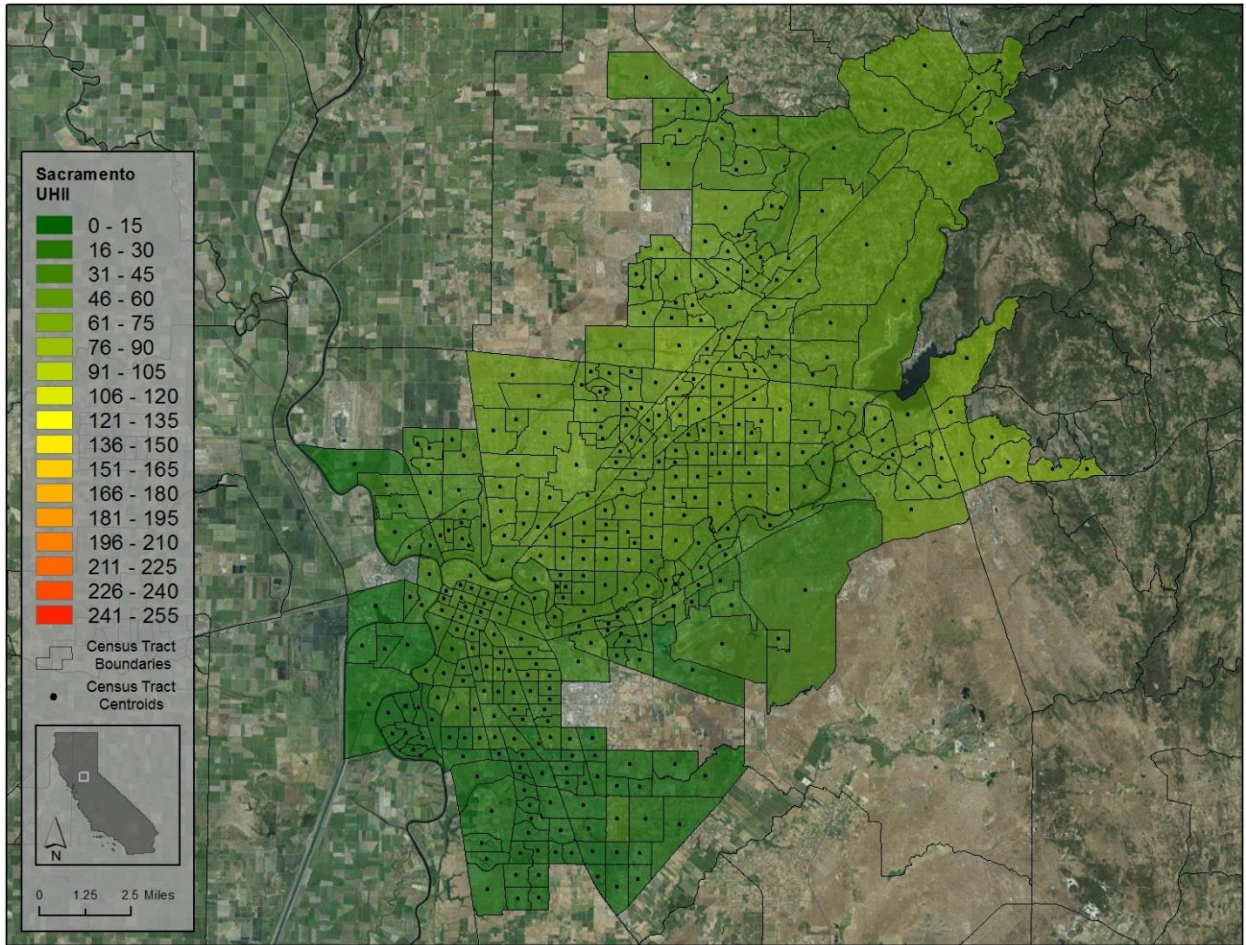


Figure B4: Sacramento and Auburn areas UHII (DH/day).
 Average temperature difference between warmest and coolest census tracts is 3.0°C.

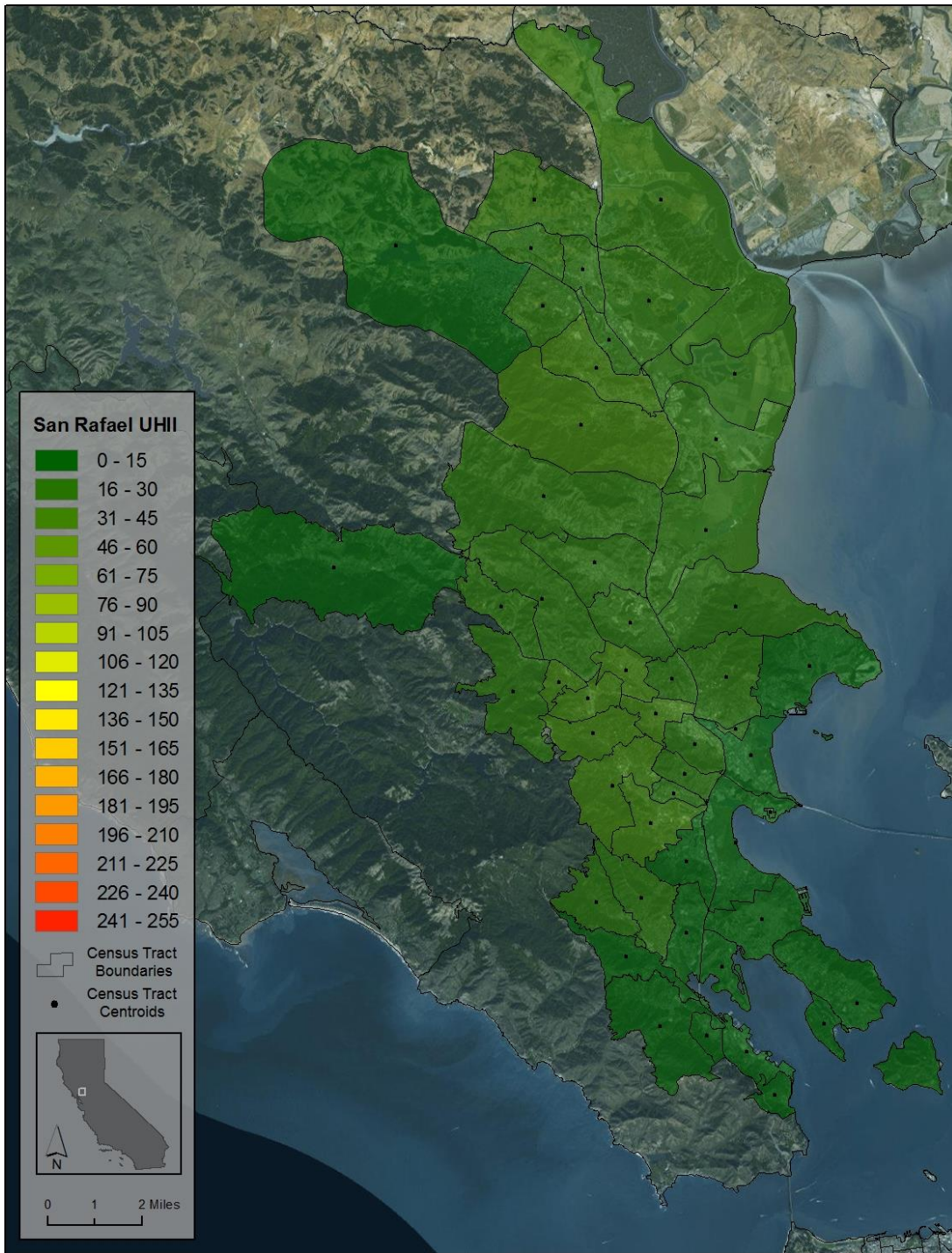


Figure B5: Sausalito, San Rafael, and Novato areas UHI (DH/day). Average temperature difference between warmest and coolest census tracts is 1.7°C.

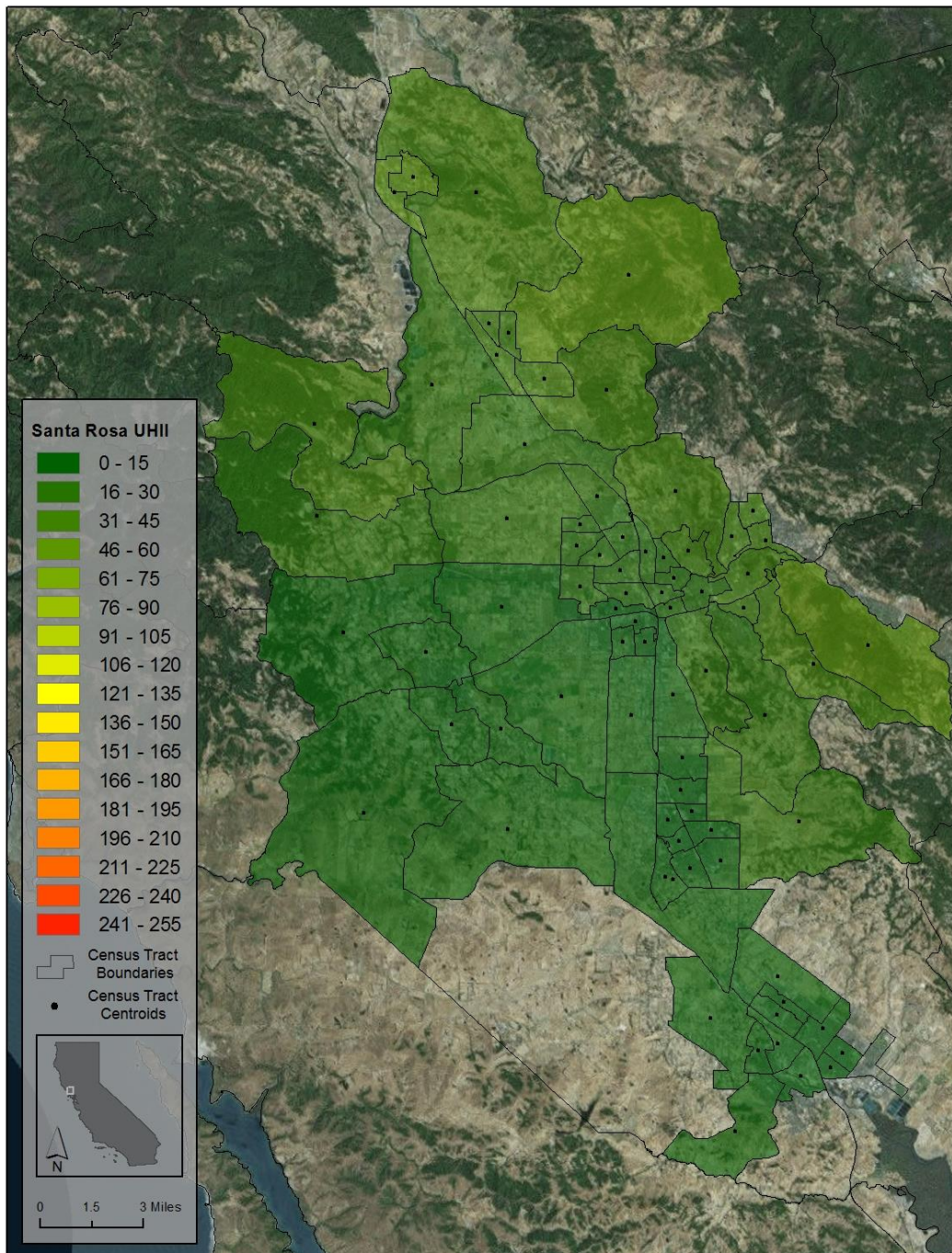


Figure B6: Rohnert Park, Santa Rosa, and Healdsburg areas UHII (DH/day). Average temperature difference between warmest and coolest census tracts is 2.4°C.

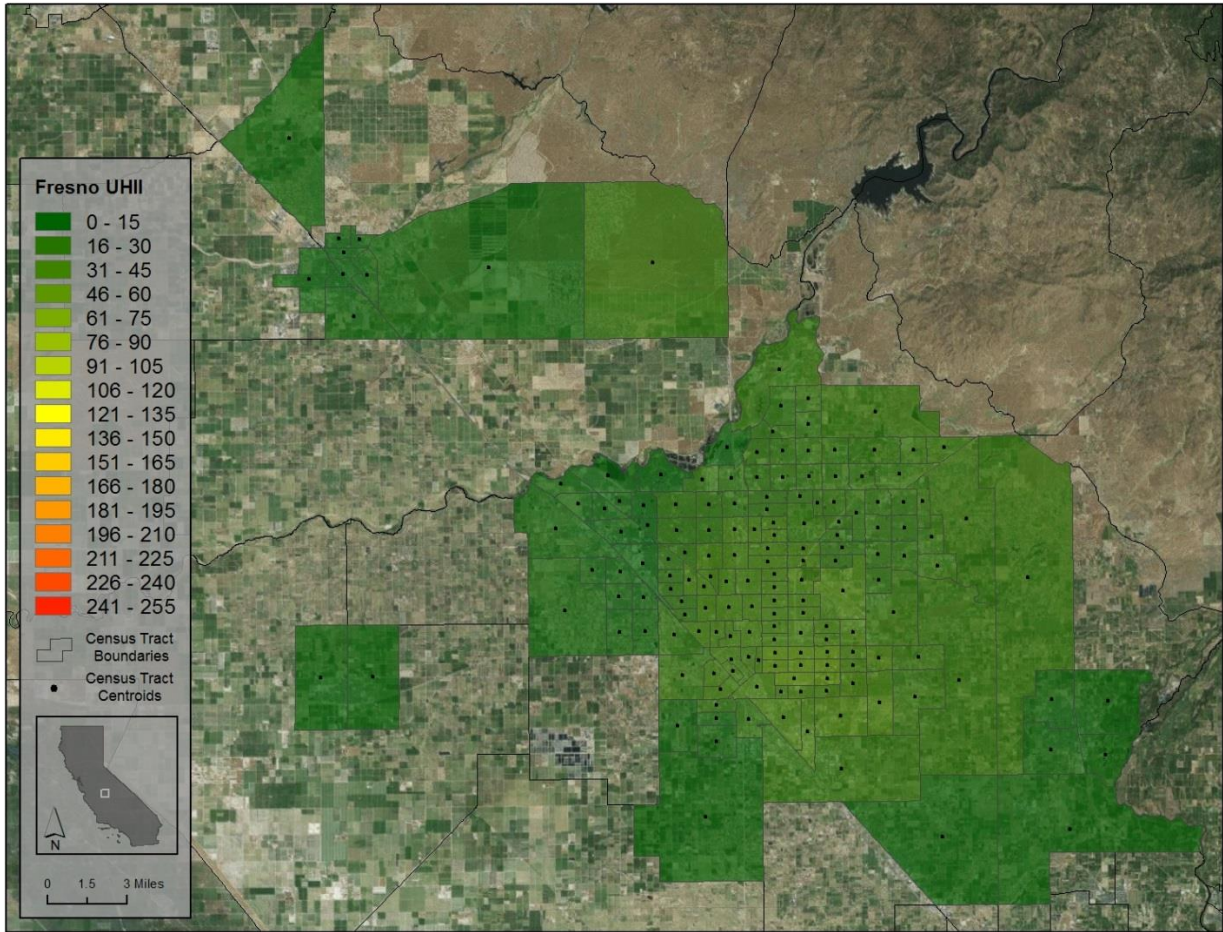


Figure B7: Fresno and Madera areas UHII (DH/day).
 Average temperature difference between warmest and coolest census tracts is 1.9°C.

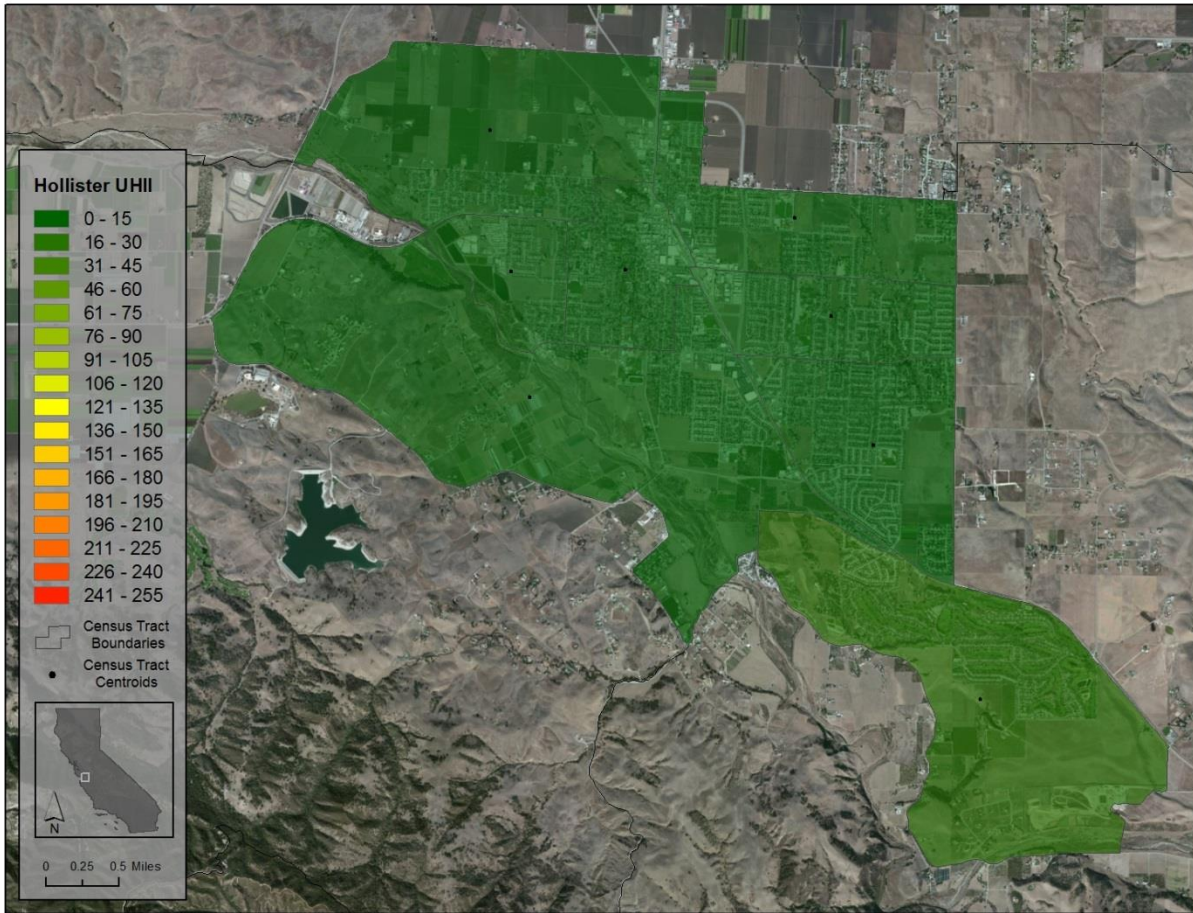


Figure B8: Hollister area UHII (DH/day).
 Average temperature difference between warmest and coolest census tracts is 1.1°C.

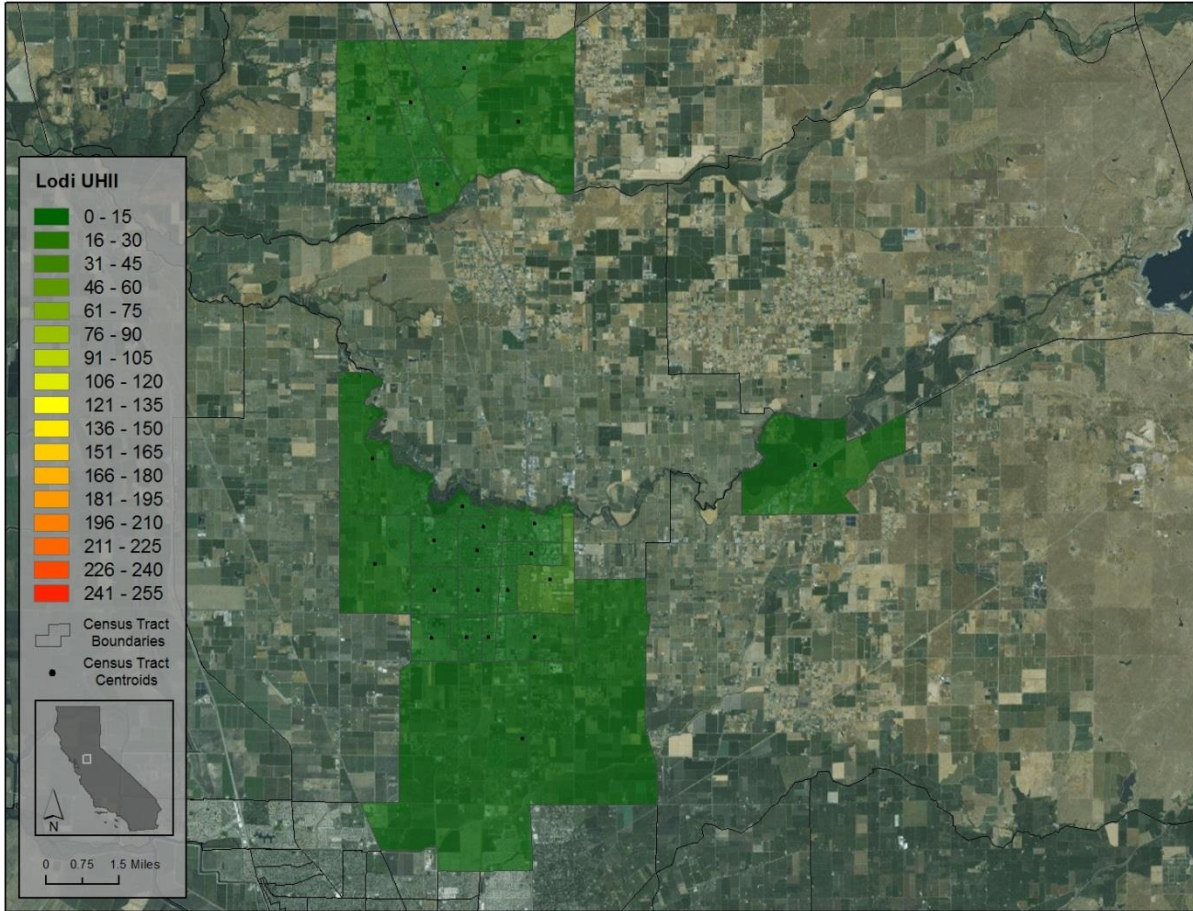


Figure B9: Lodi area UHII (DH/day).
 Average temperature difference between warmest and coolest census tracts is 0.7°C.

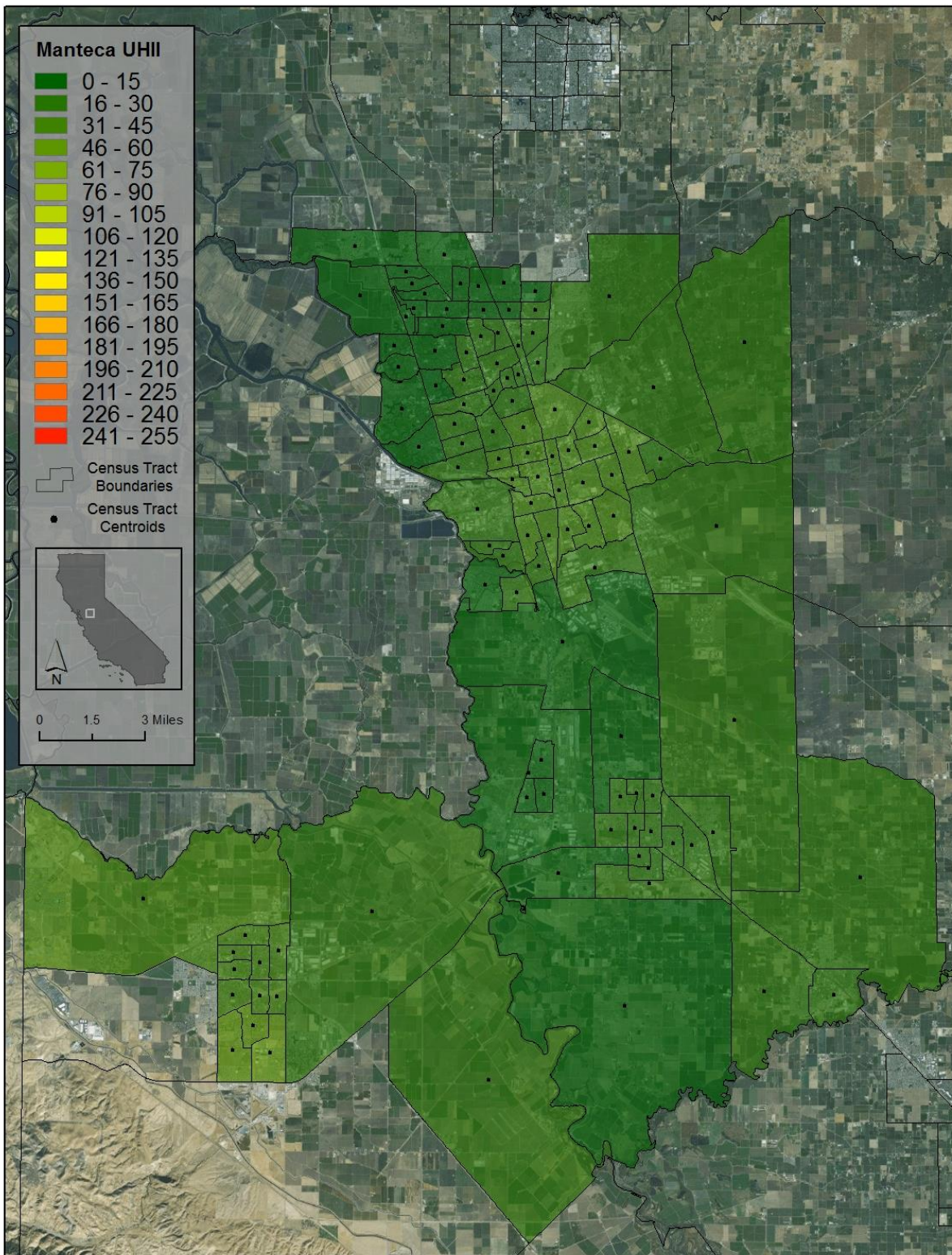


Figure B10: Stockton, Manteca, and Tracy areas UHII (DH/day).
 Average temperature difference between warmest and coolest census tracts is 2.2°C.

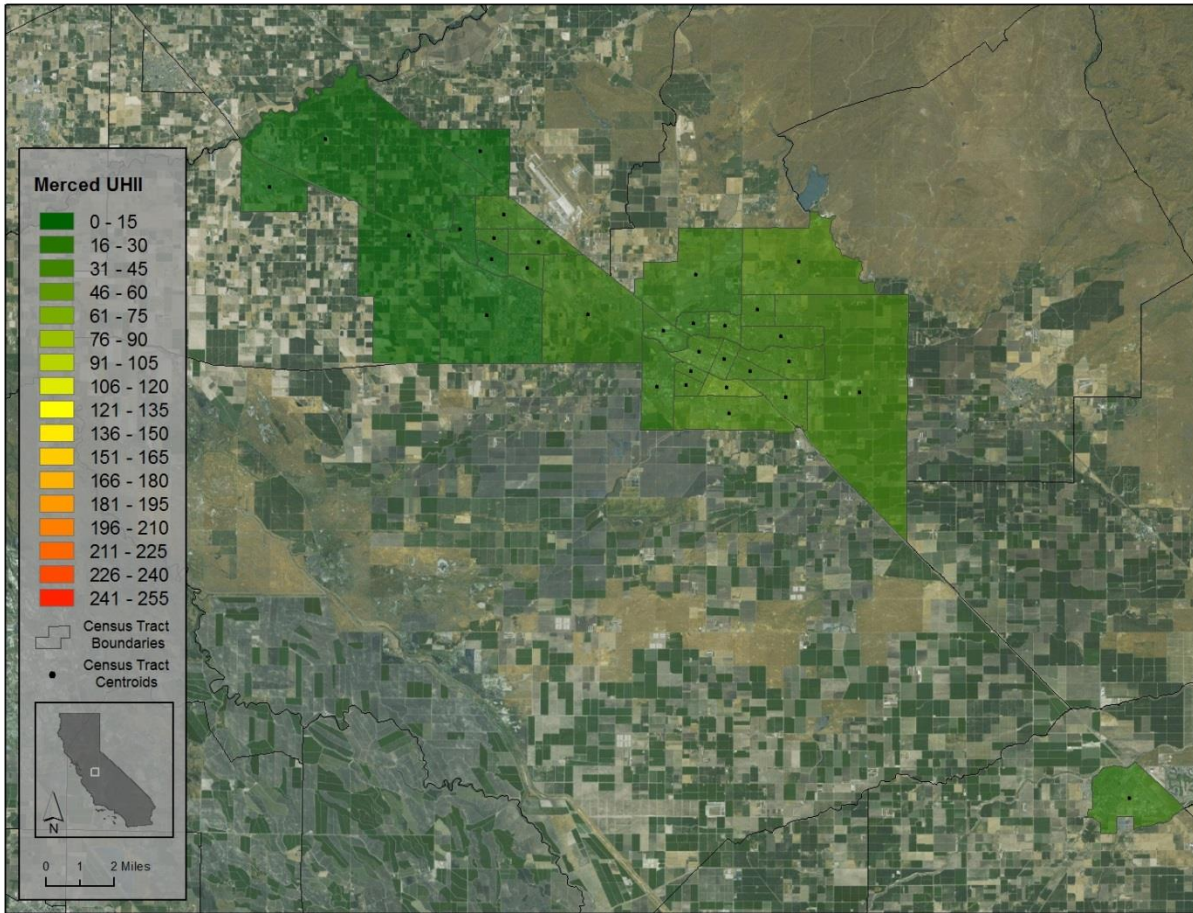


Figure B11: Merced area UHII (DH/day).
 Average temperature difference between warmest and coolest census tracts is 1.7°C.

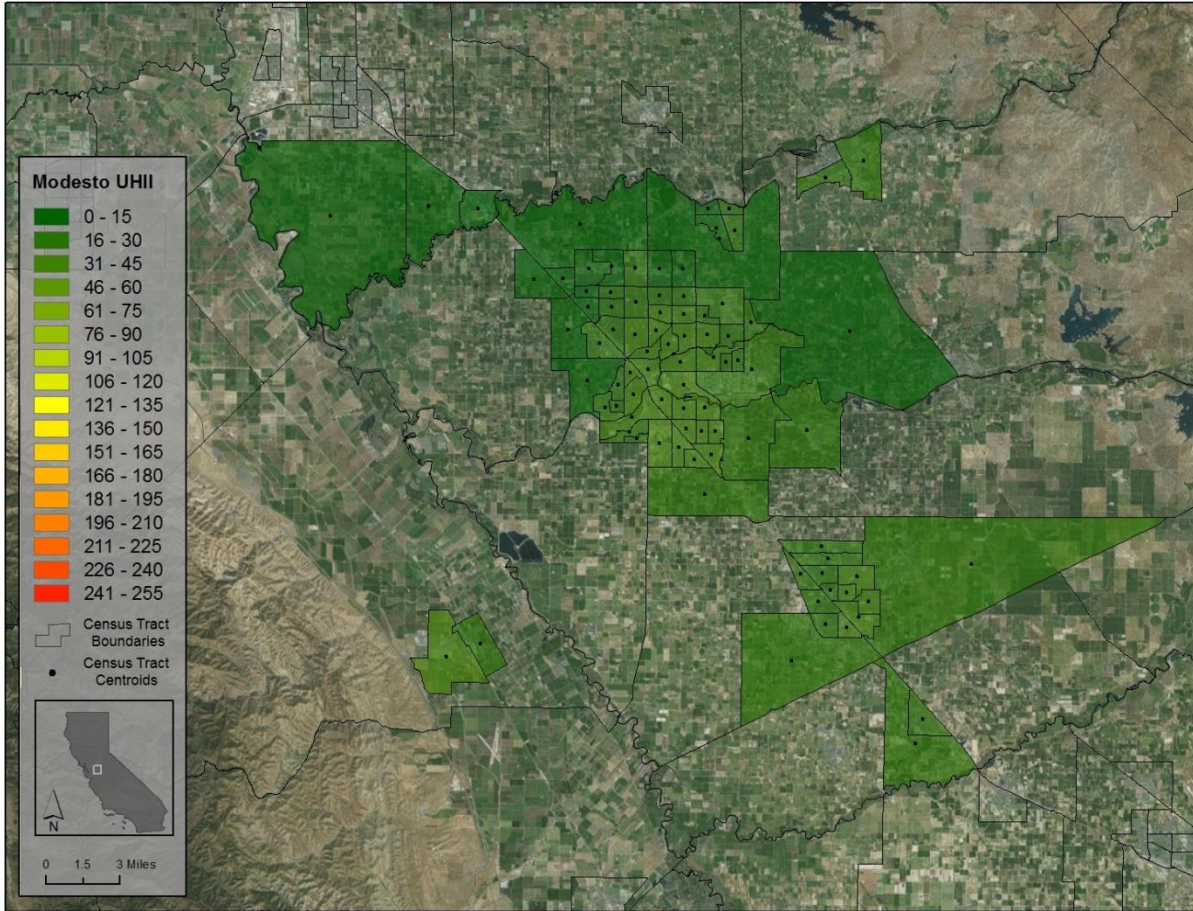


Figure B12: Modesto, Turlock, and Patterson areas UHII (DH/day).
 Average temperature difference between warmest and coolest census tracts is 1.8°C.

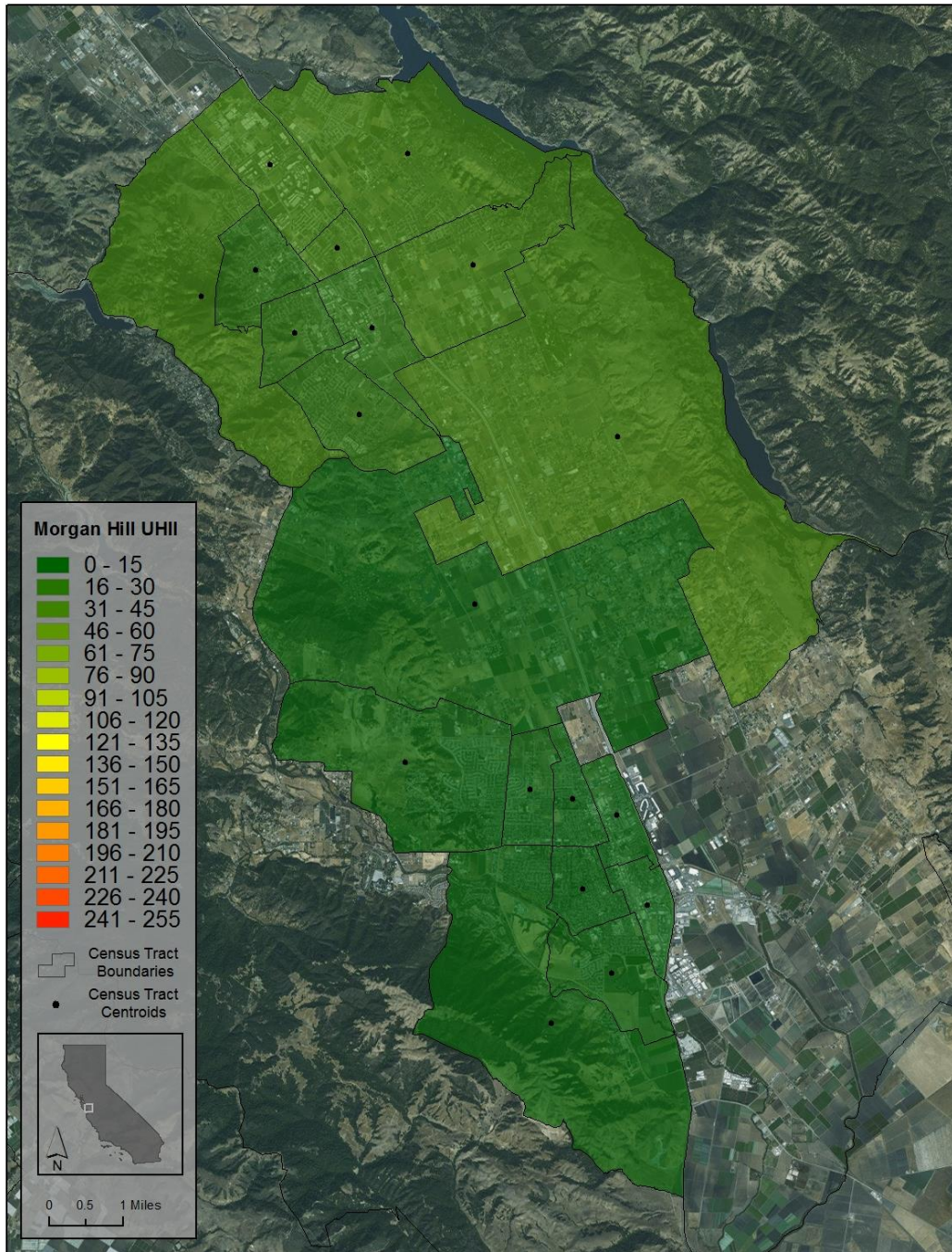


Figure B13: Morgan Hill and Gilroy areas UHII (DH/day).
 Average temperature difference between warmest and coolest census tracts is 1.5°C.

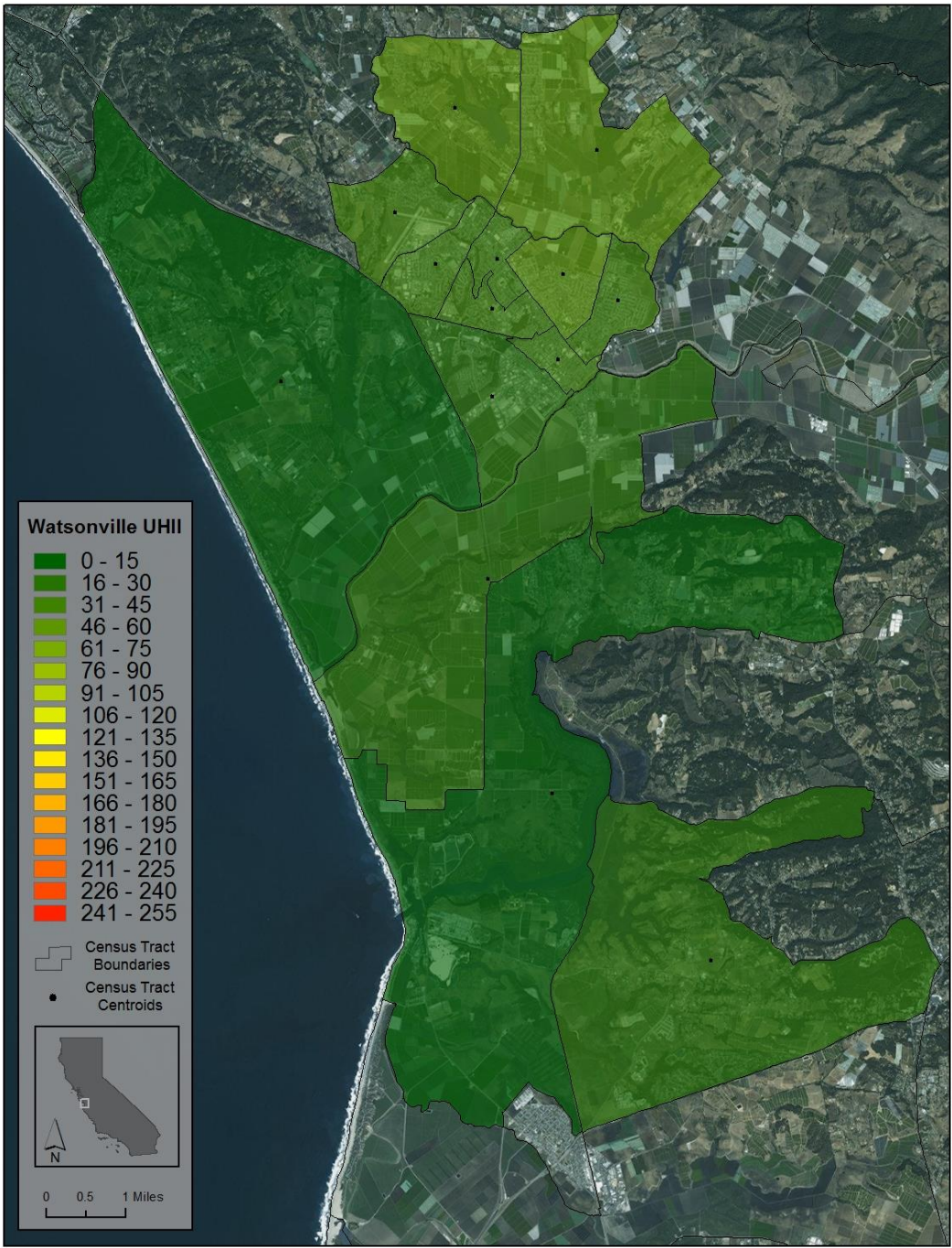


Figure B14: Watsonville and Moss Landing areas UHII (DH/day).
 Average temperature difference between warmest and coolest census tracts is 2.1°C.

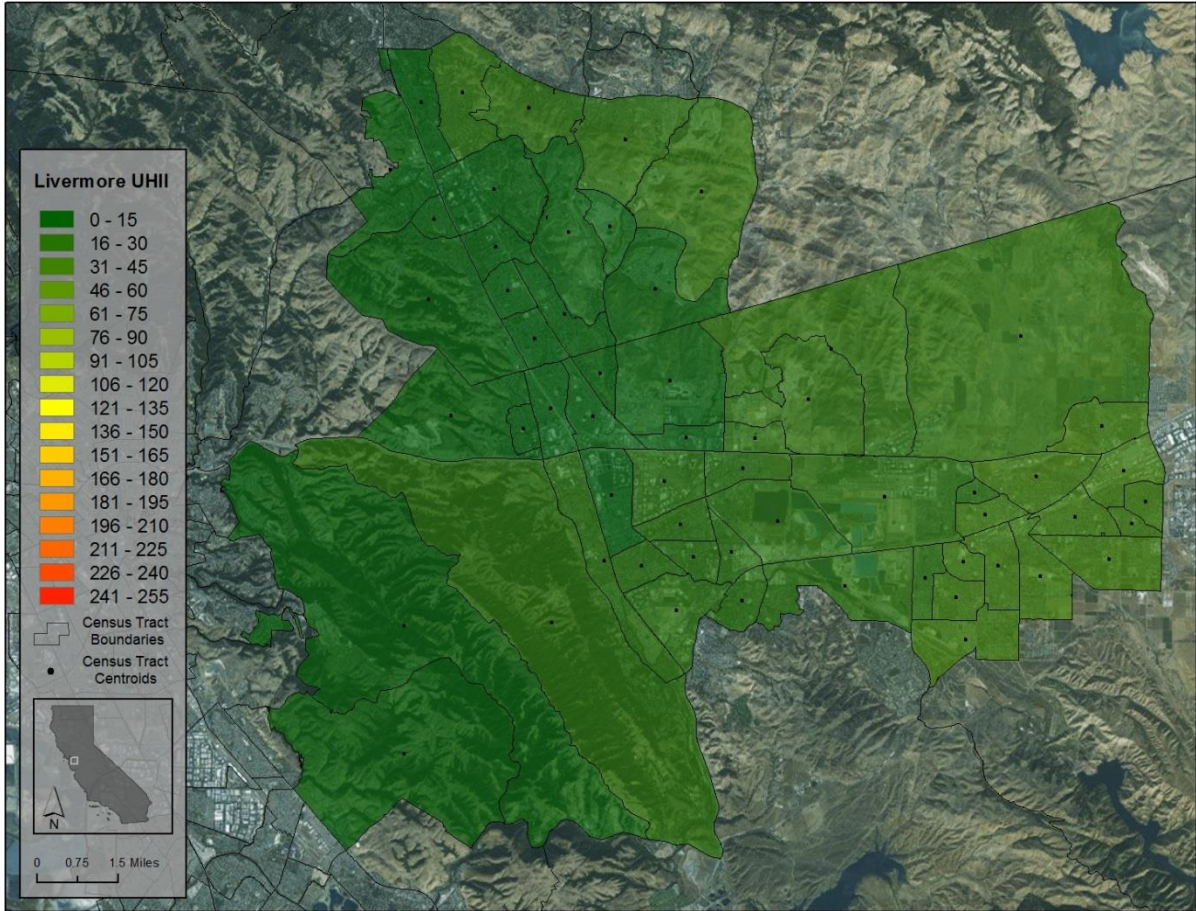


Figure B15: San Ramon, Dublin, and Livermore areas UHII (DH/day).
 Average temperature difference between warmest and coolest census tracts is 1.6°C.

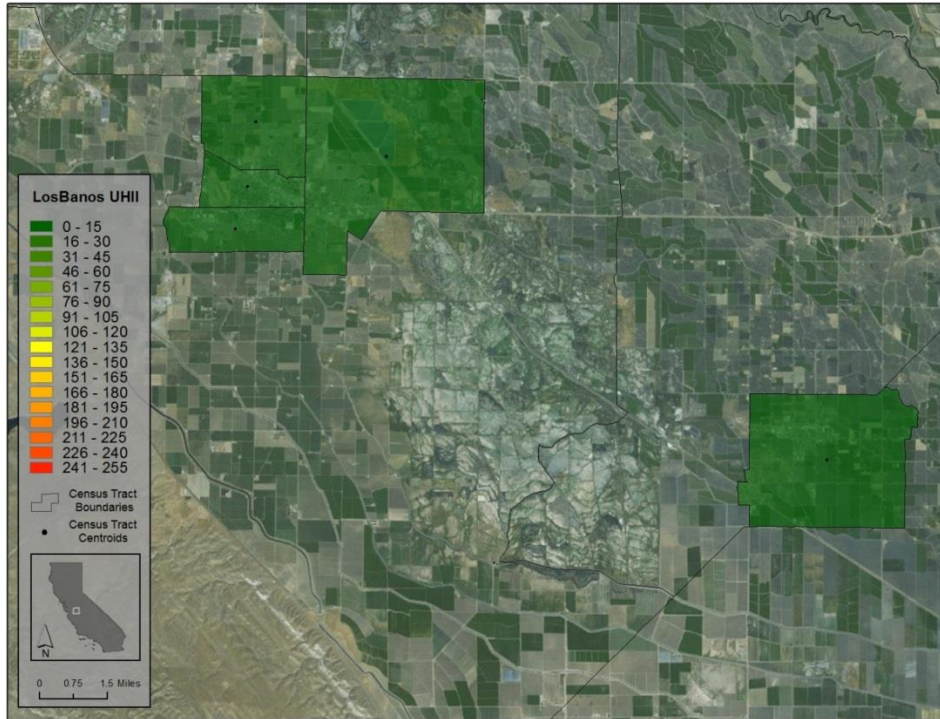


Figure B16: Los Banos and Dos Palos UHII (DH/day).
Average temperature difference between warmest and coolest census tracts is 0.2°C.

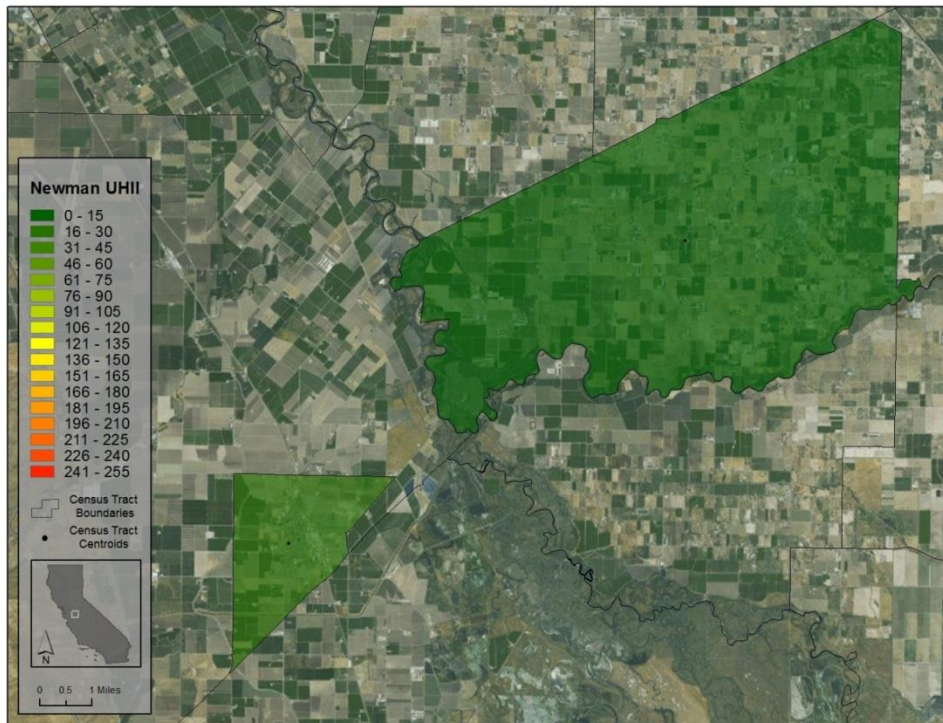


Figure B17: Newman and Hilmar areas UHII (DH/day).
Average temperature difference between warmest and coolest census tracts is 0.3°C.

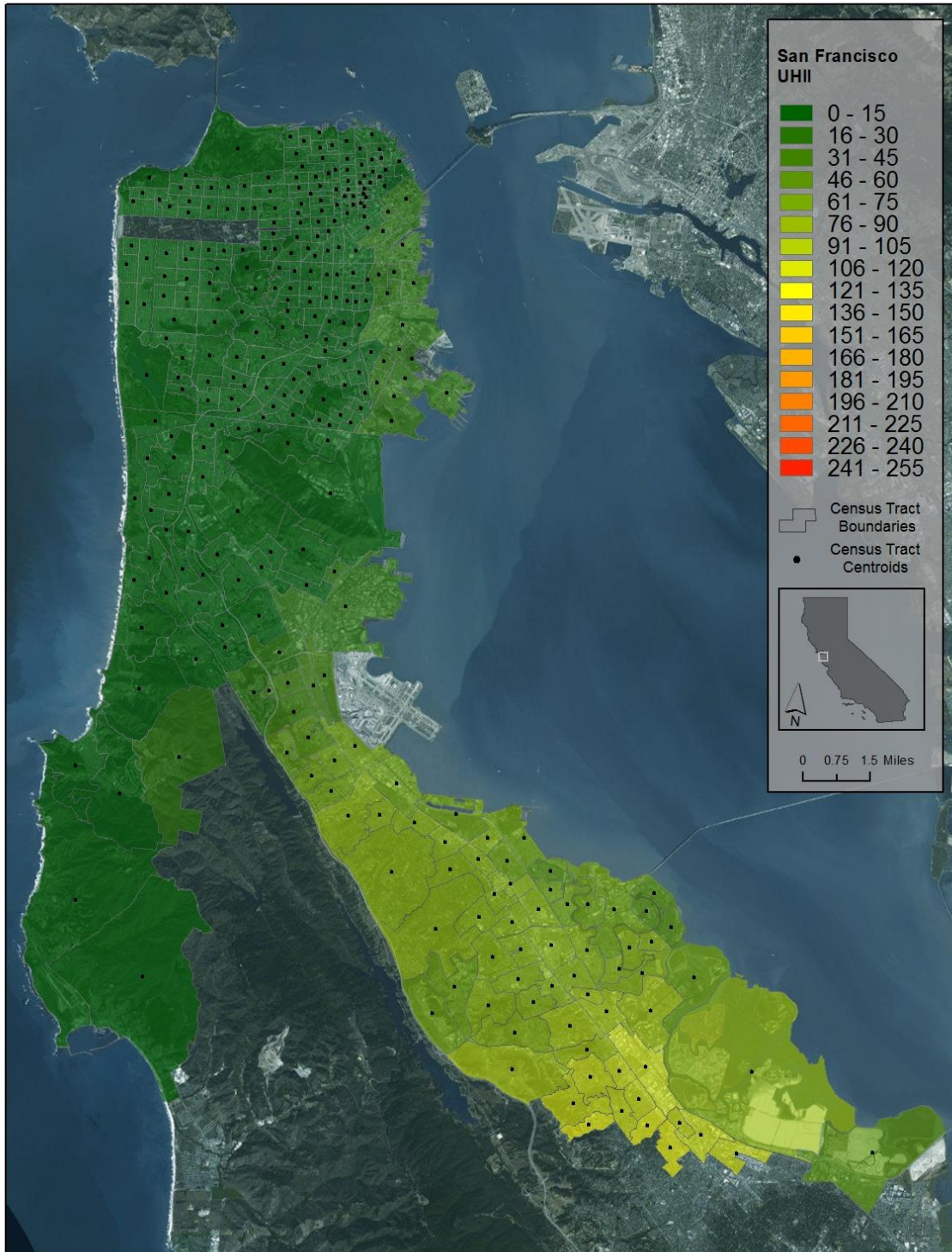


Figure B18: San Francisco peninsula UHII (DH/day).
 Average temperature difference between warmest and coolest census tracts is 5.0°C.

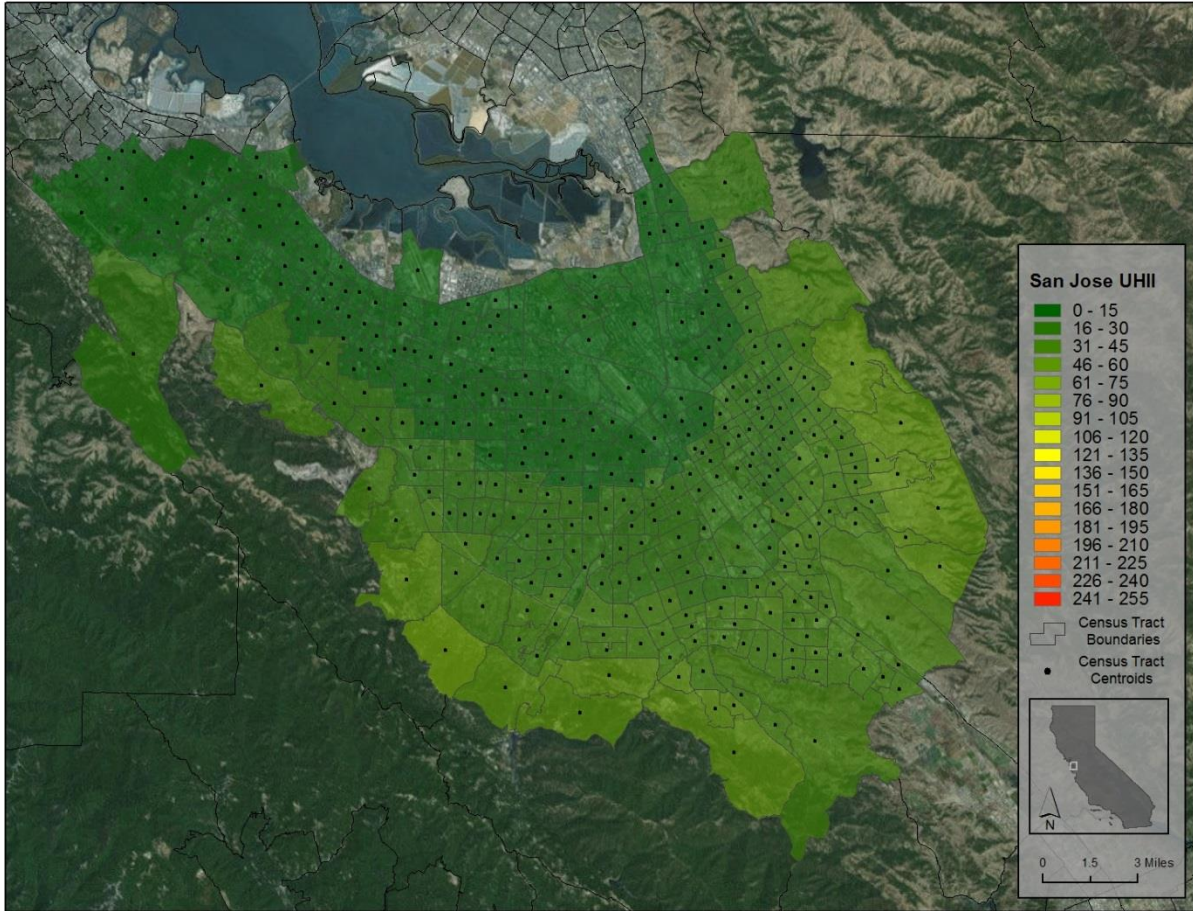


Figure B19: San Jose and South Bay areas UHII (DH/day).
 Average temperature difference between warmest and coolest census tracts is 2.0°C.

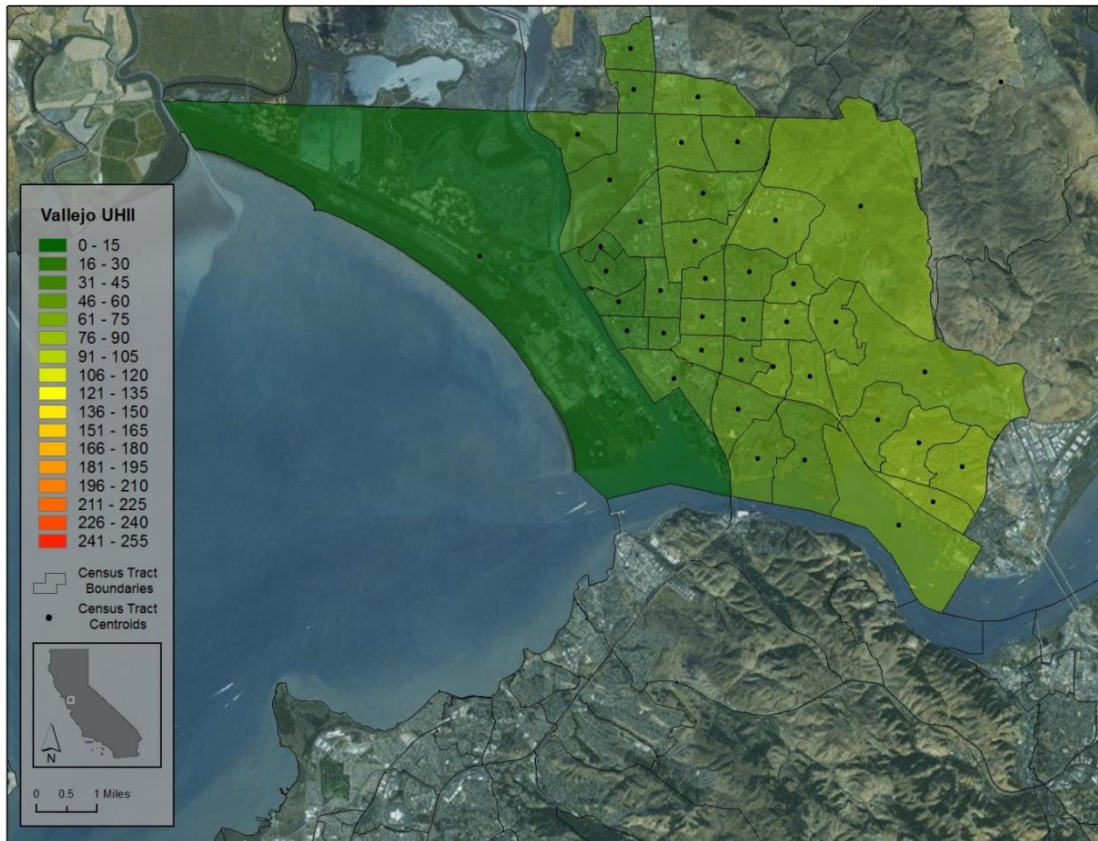


Figure B20: Vallejo area UHII (DH/day).
 Average temperature difference between warmest and coolest census tracts is 3.4°C.

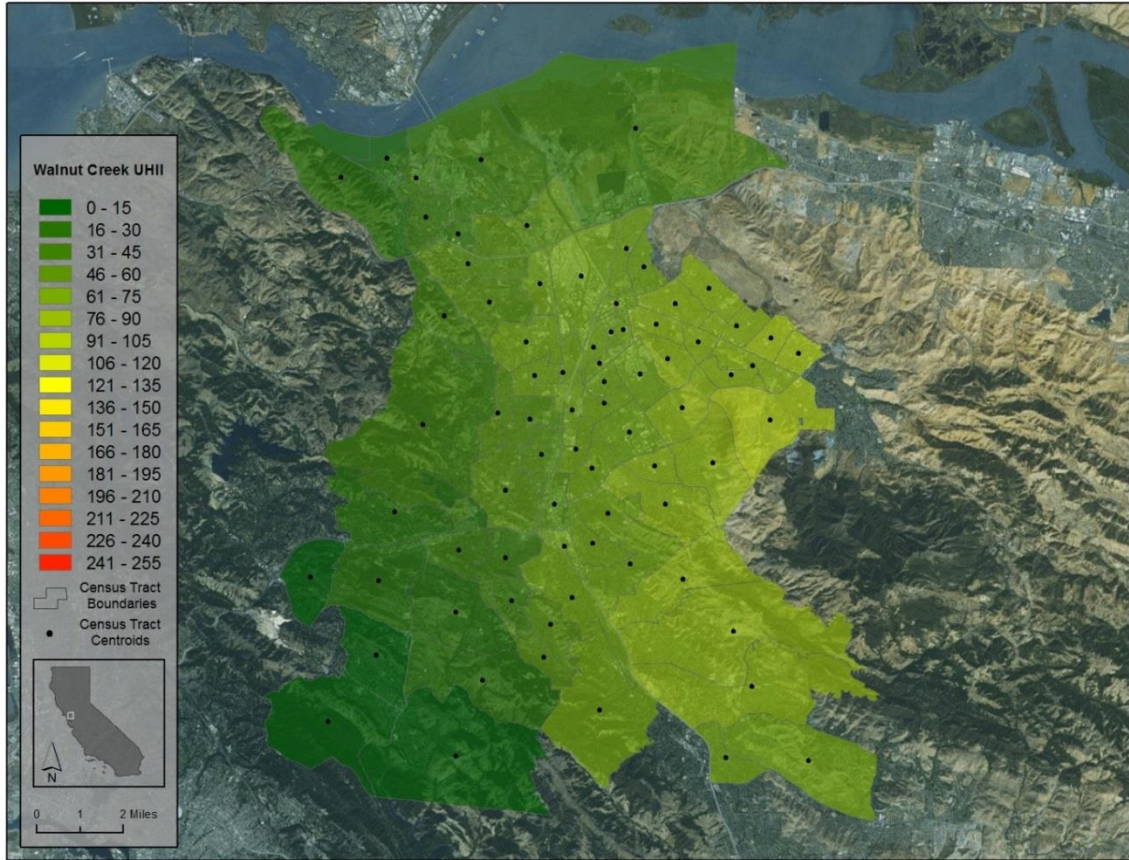


Figure B21: Martinez, Concord, Pleasant Hill, and Walnut Creek areas UHII (DH/day). Average temperature difference between warmest and coolest census tracts is 3.9°C.

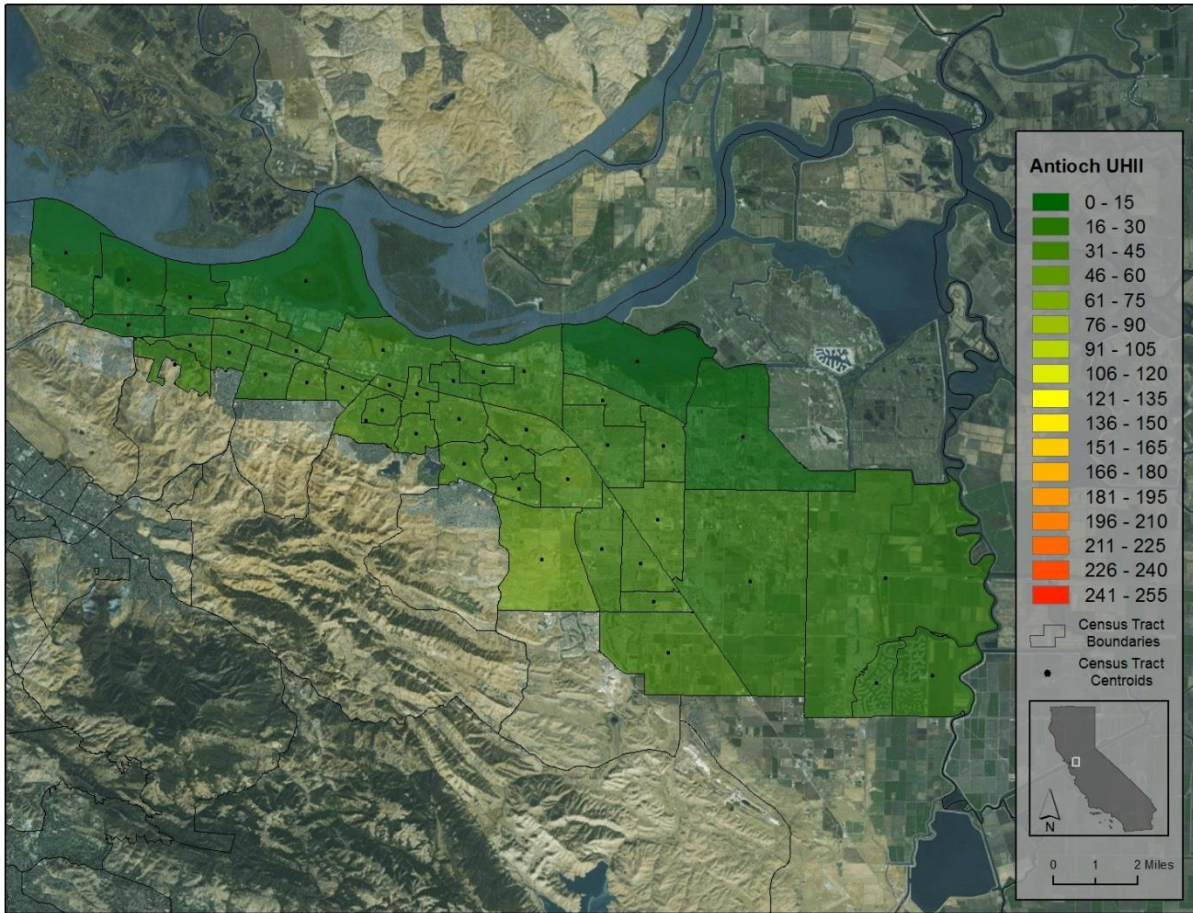


Figure B22: Antioch area UHII (DH/day).
 Average temperature difference between warmest and coolest census tracts is 1.9°C.

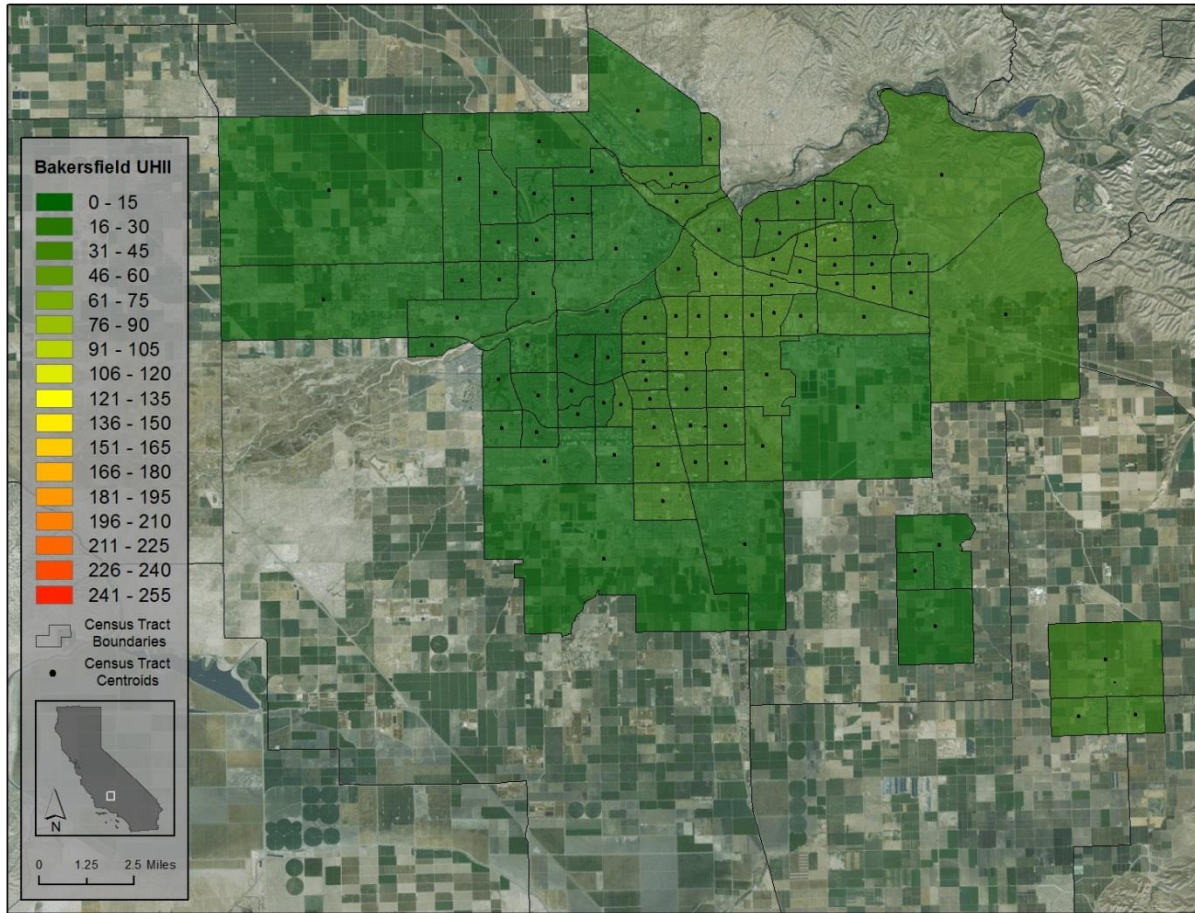


Figure B23: Bakersfield area UHII (DH/day).
 Average temperature difference between warmest and coolest census tracts is 1.4°C.

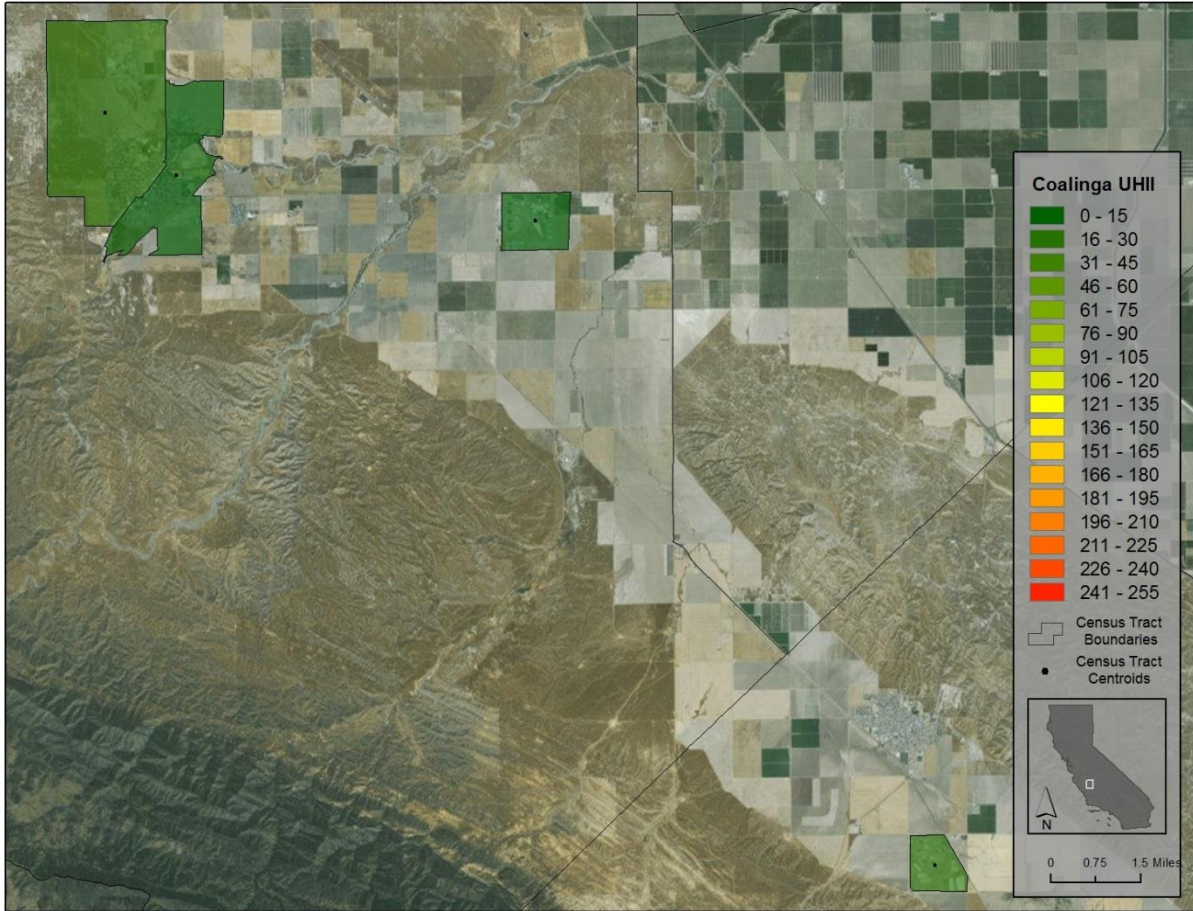


Figure B24: Coalinga and Avenal areas UHII (DH/day).
 Average temperature difference between warmest and coolest census tracts is 0.9°C.

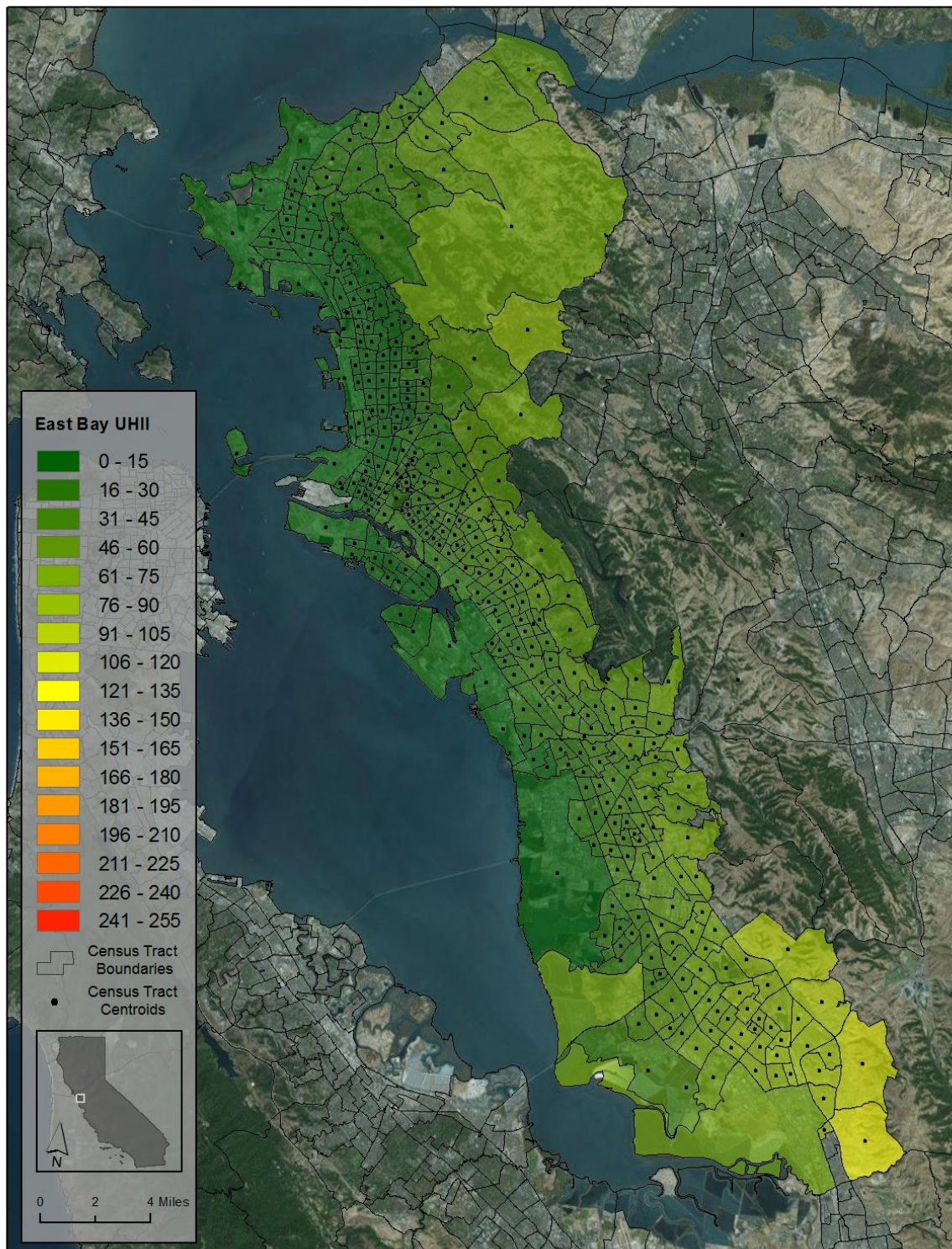


Figure B25: East Bay area UHII (DH/day).
 Average temperature difference between warmest and coolest census tracts is 5.0°C.

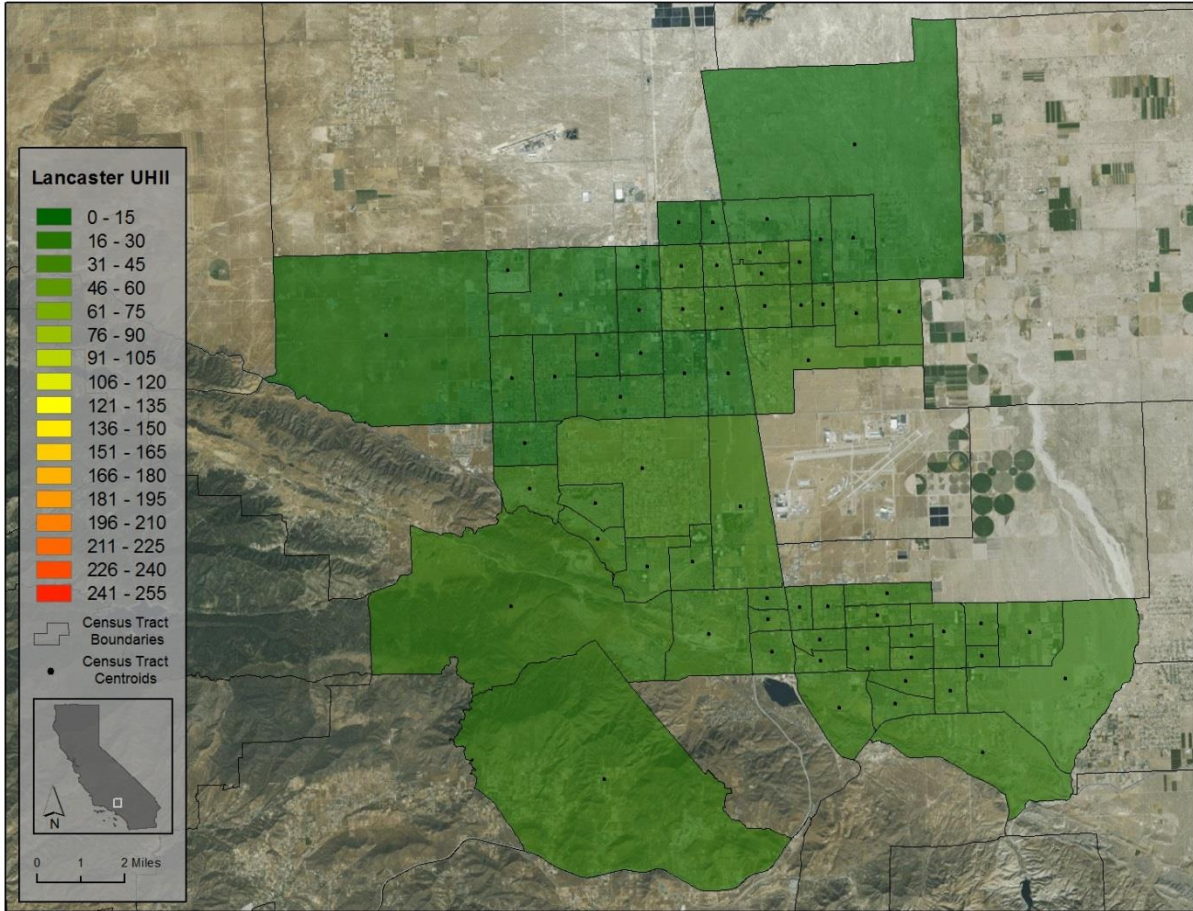


Figure B26: Lancaster and Palmdale areas UHII (DH/day).
 Average temperature difference between warmest and coolest census tracts is 0.9°C.

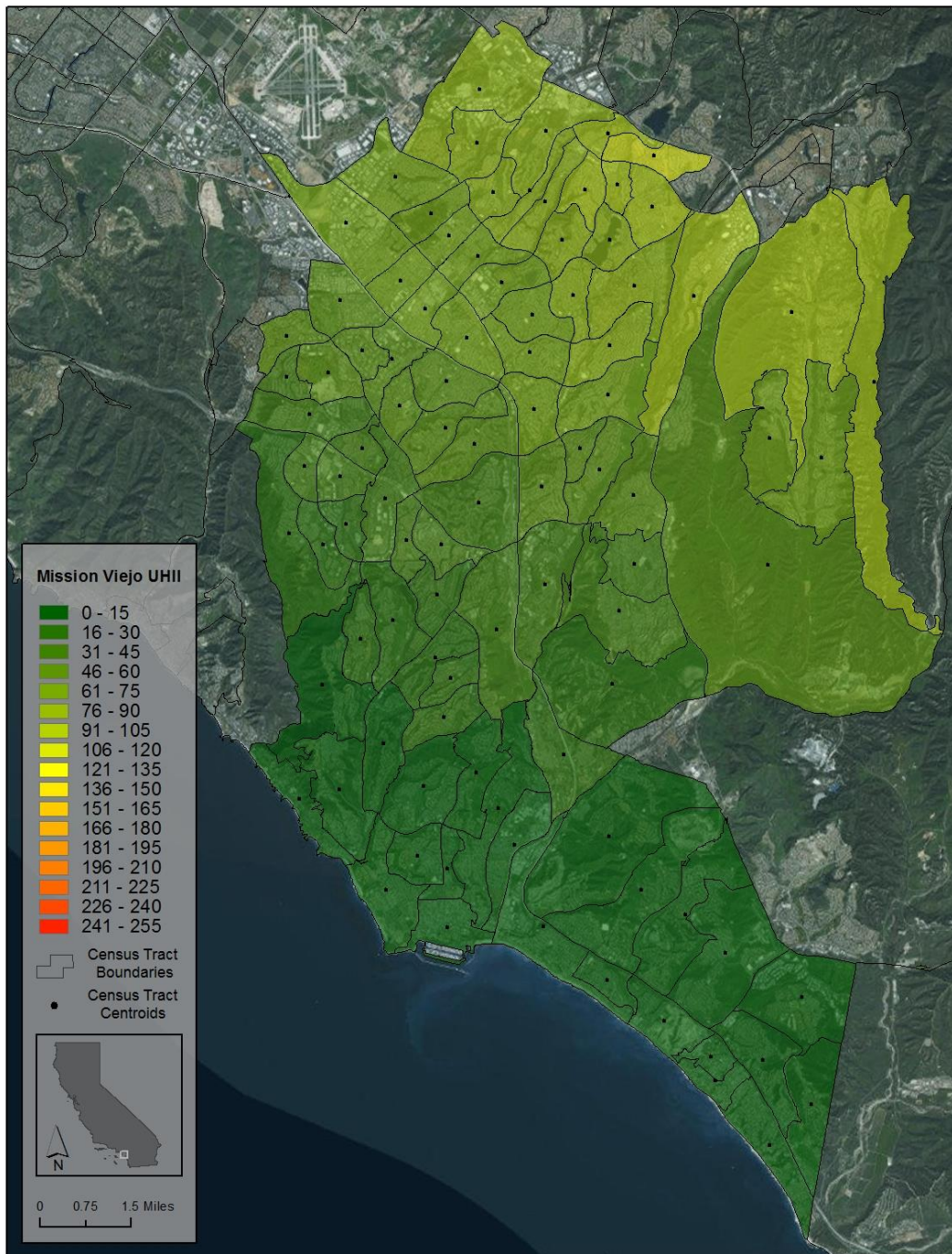


Figure B27: Mission Viejo area UHII (DH/day).
 Average temperature difference between warmest and coolest census tracts is 4.6°C.

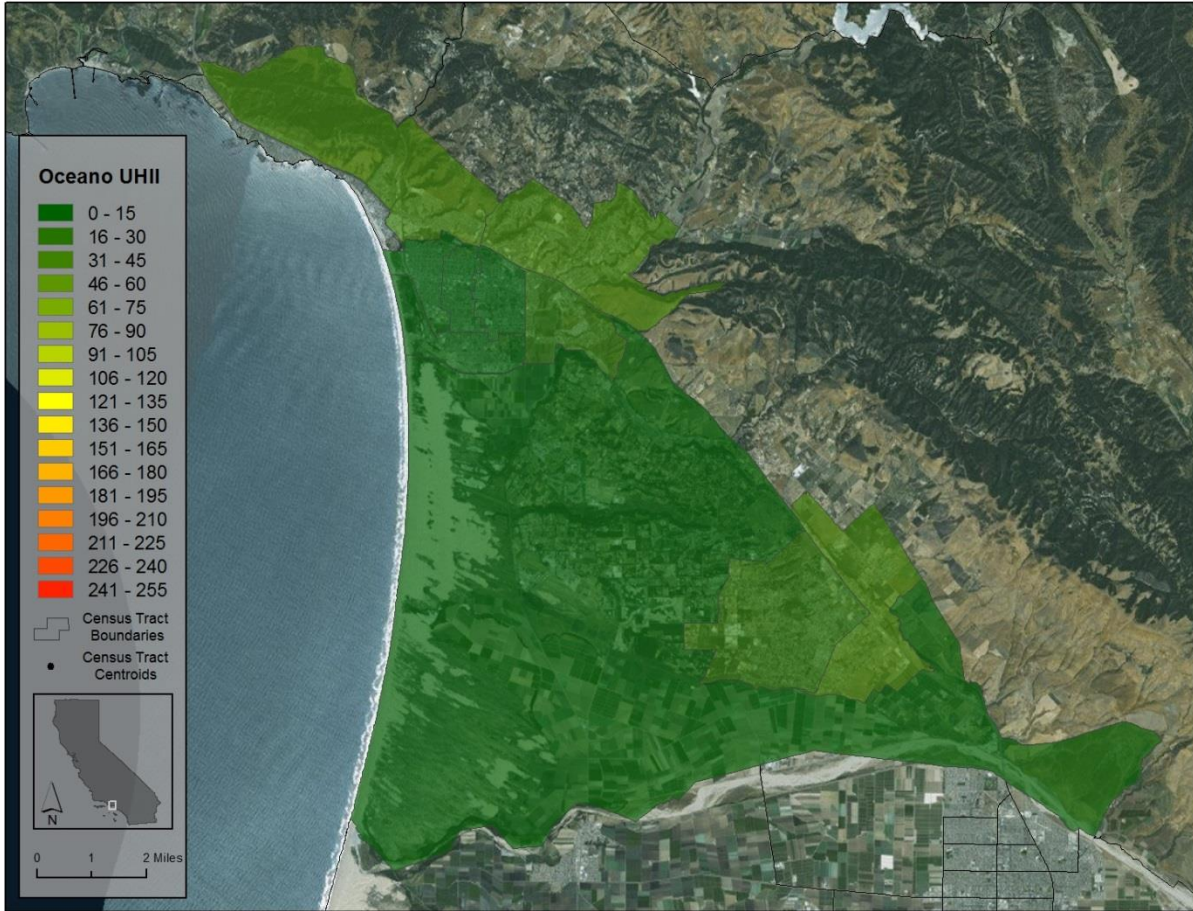


Figure B28: Pismo Beach and Oceano areas UHII (DH/day).
 Average temperature difference between warmest and coolest census tracts is 1.5°C.

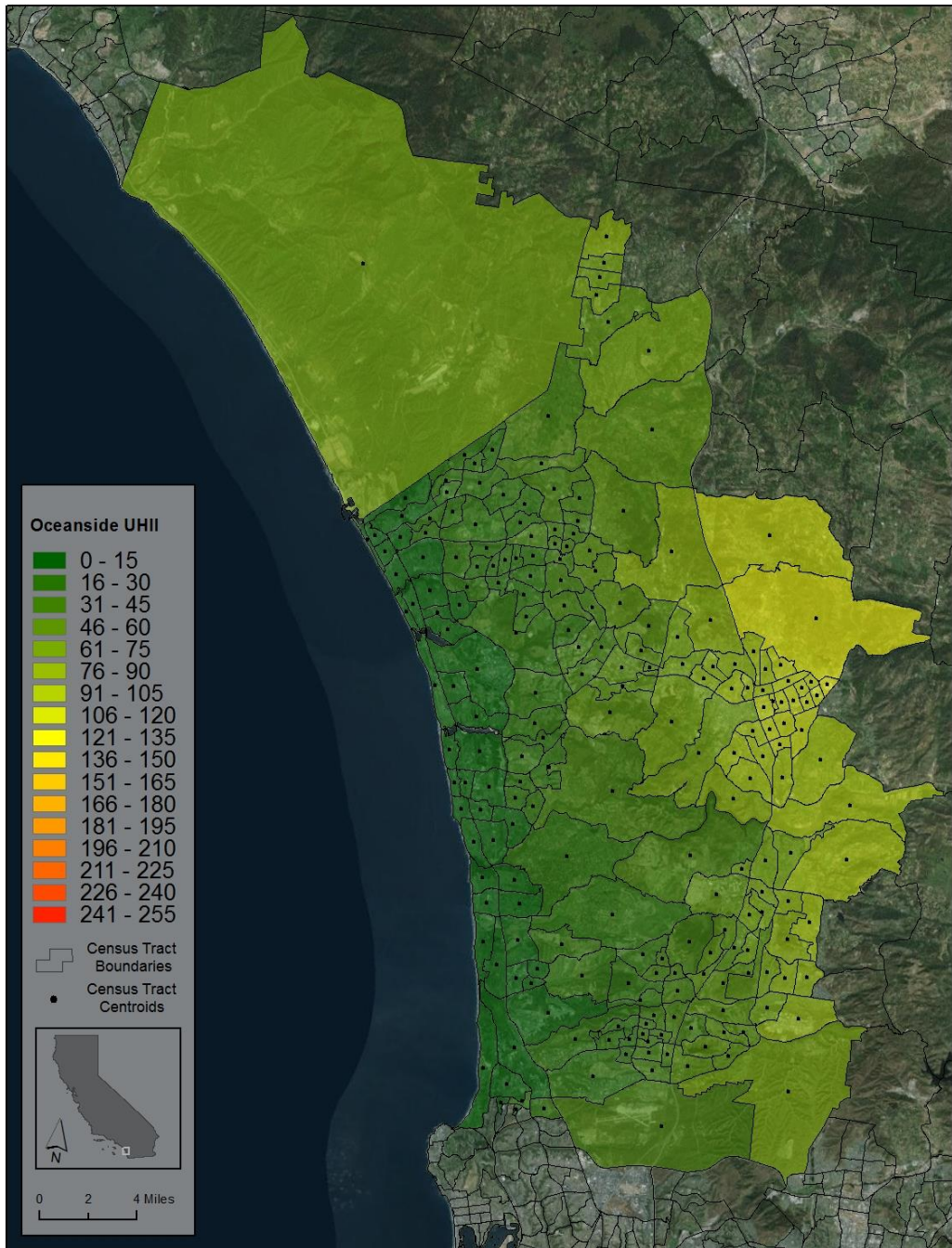


Figure B29: Oceanside area UHII (DH/day).
 Average temperature difference between warmest and coolest census tracts is 5.2°C.

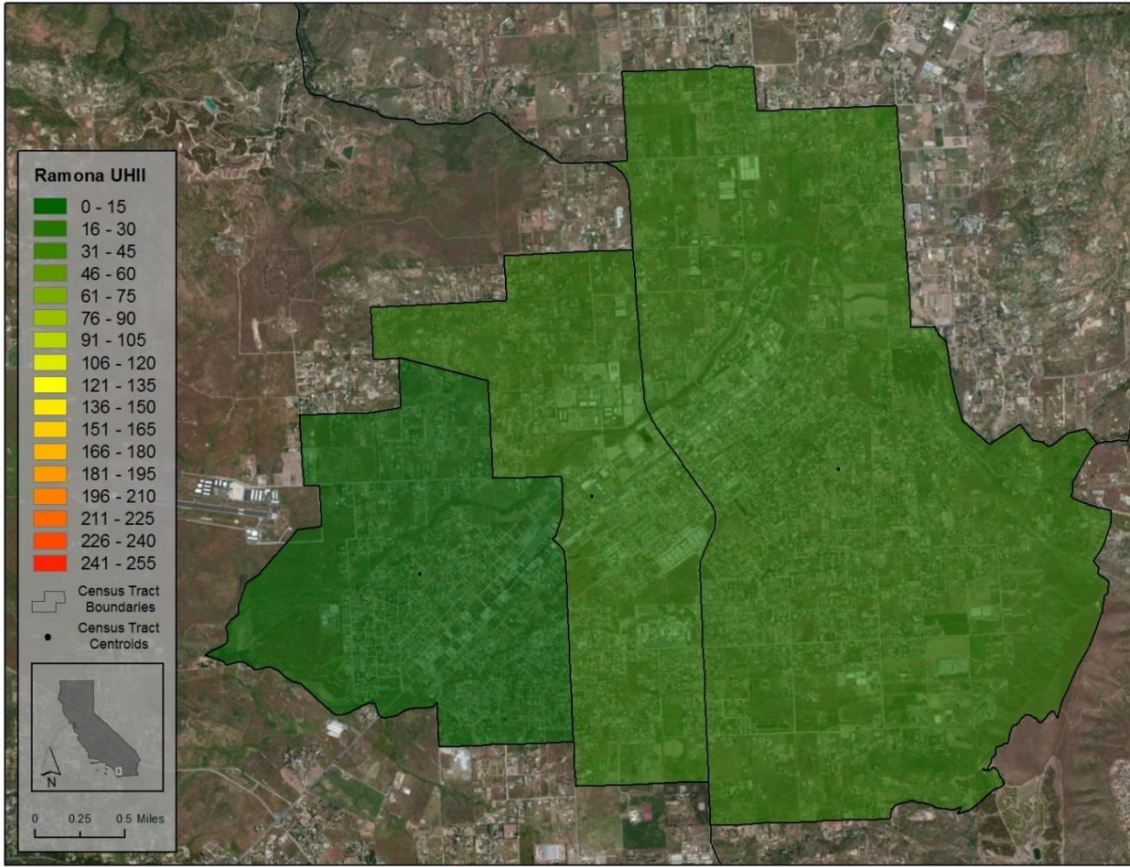


Figure B30: Ramona area UHII (DH/day).
 Average temperature difference between warmest and coolest census tracts is 0.8°C.

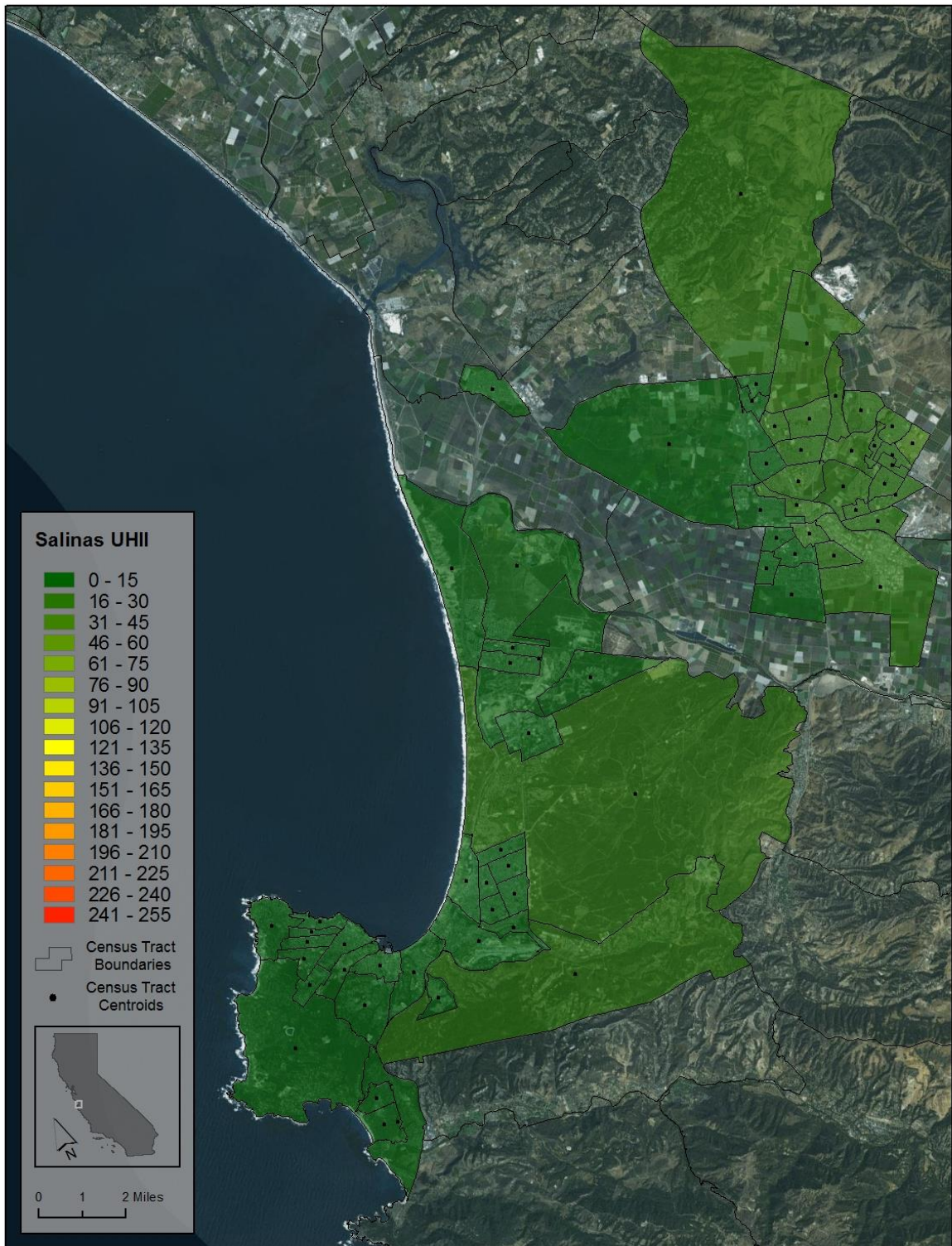


Figure B31: Monterey, Salinas, and Castroville areas UHII (DH/day). Average temperature difference between warmest and coolest census tracts is 1.2°C.

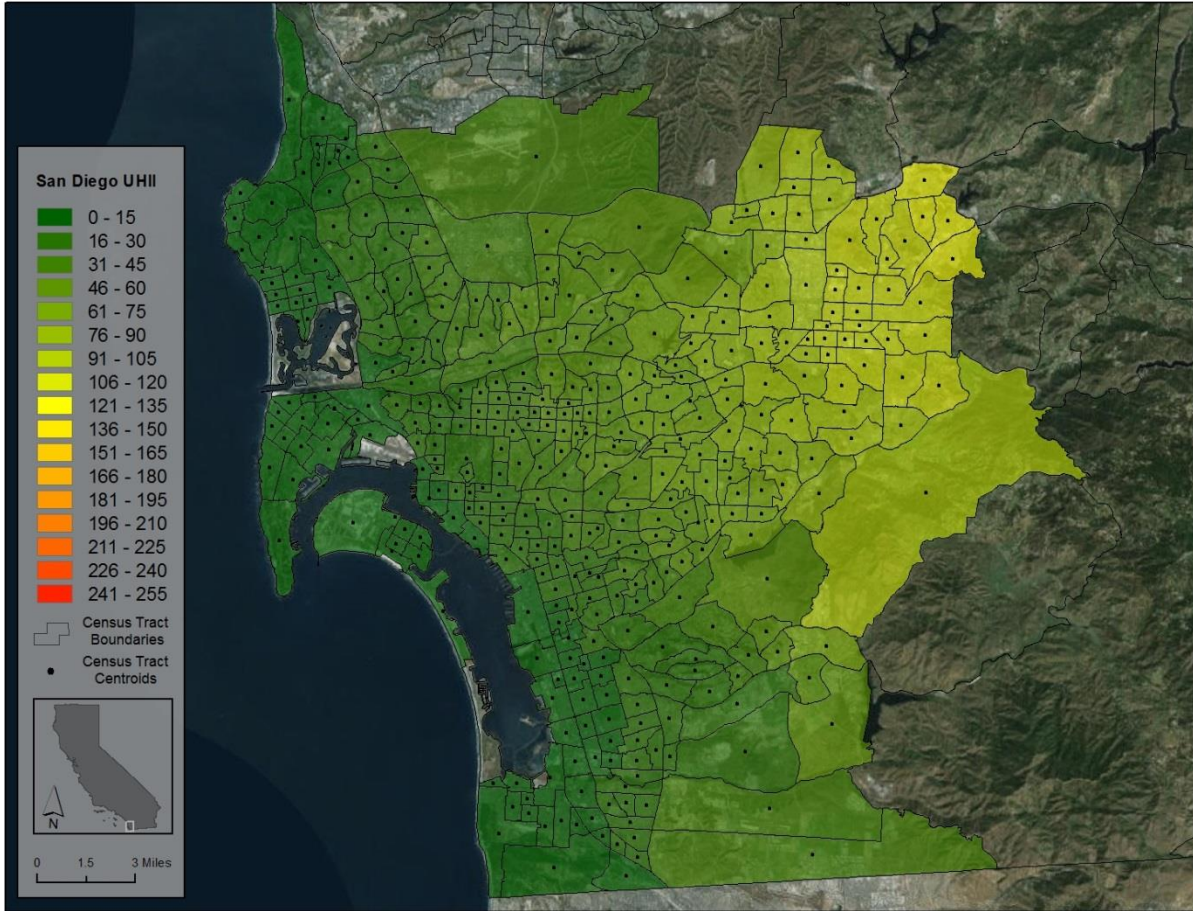


Figure B32: San Diego area UHII (DH/day).
 Average temperature difference between warmest and coolest census tracts is 5.1°C.

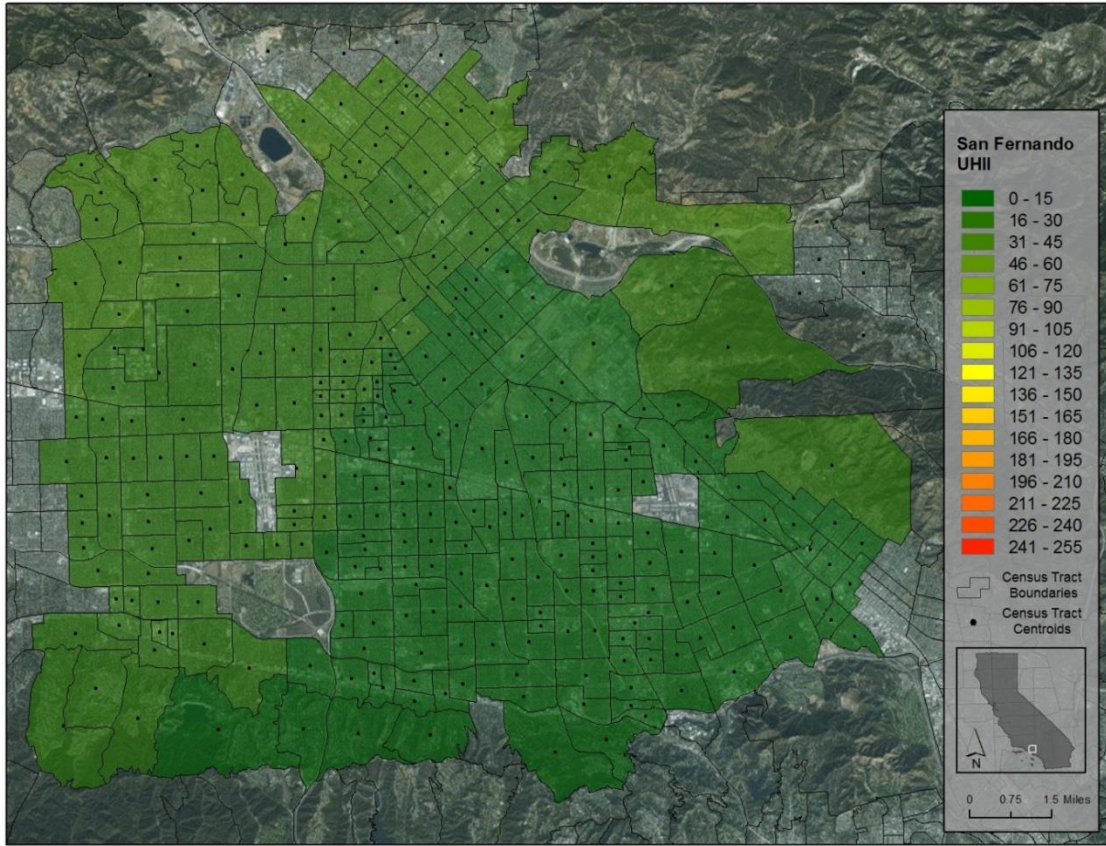


Figure B33: San Fernando Valley UHII (DH/day).
Average temperature difference between warmest and coolest census tracts is 1.7°C.

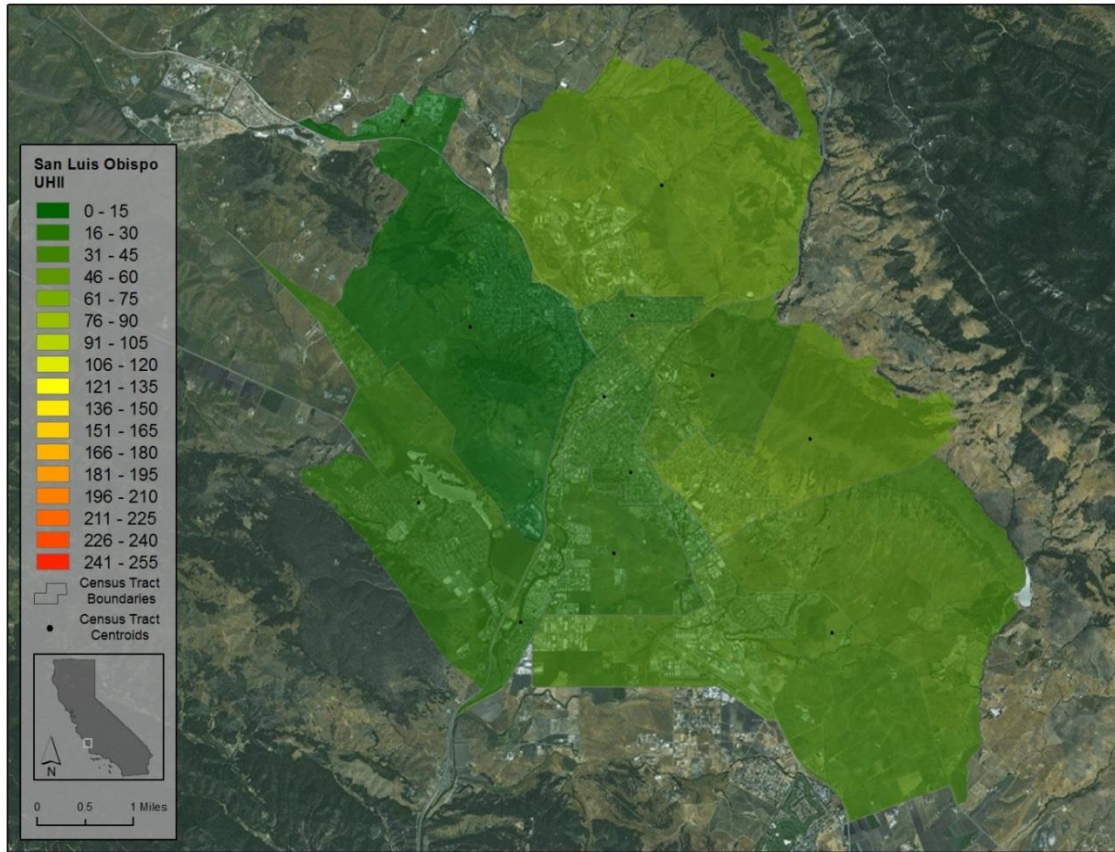


Figure B34: San Luis Obispo area UHII (DH/day).
 Average temperature difference between warmest and coolest census tracts is 2.0°C.

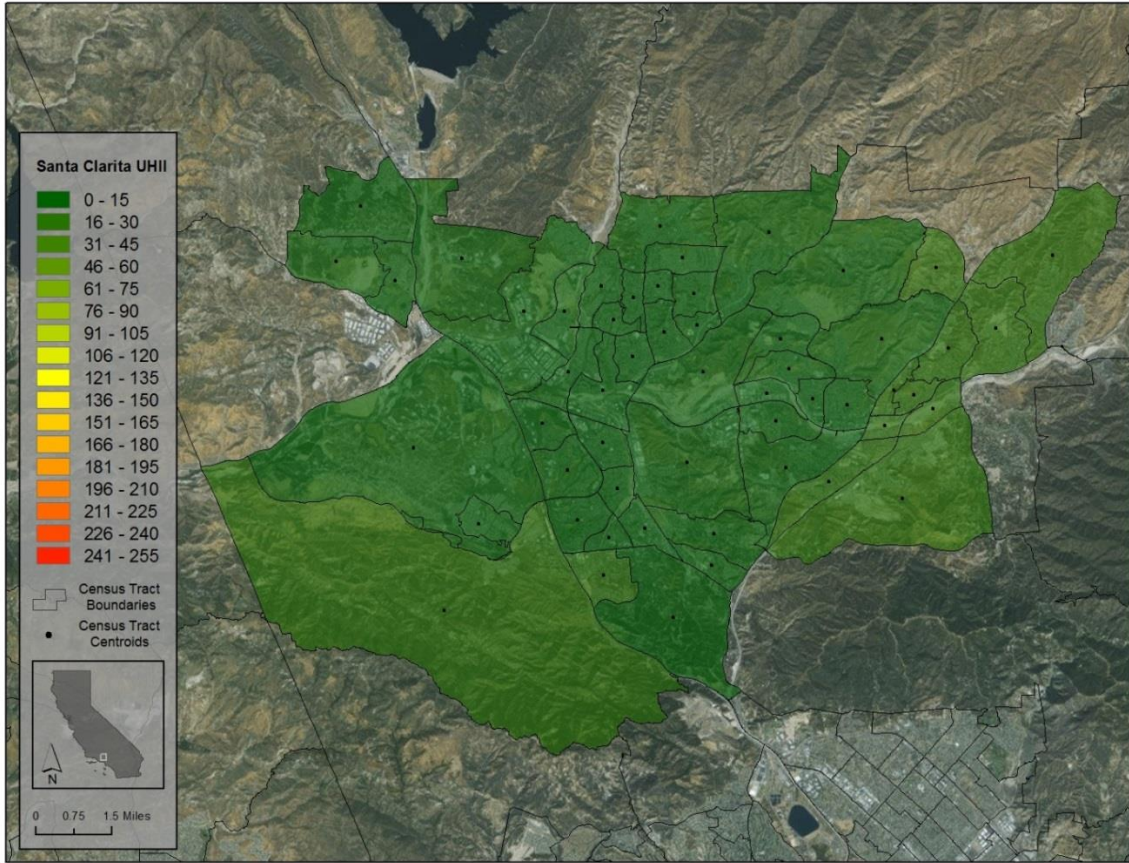


Figure B35: Santa Clarita area UHI (DH/day).
 Average temperature difference between warmest and coolest census tracts is 1.0°C.

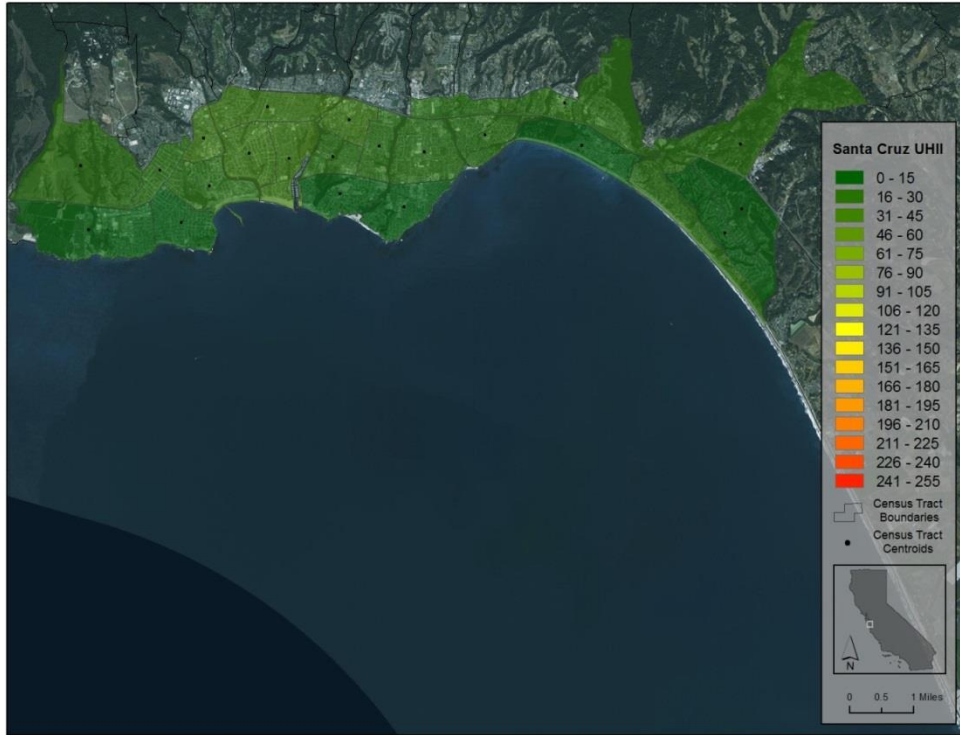


Figure B36: Santa Cruz area UHII (DH/day).
 Average temperature difference between warmest and coolest census tracts is 1.6°C.

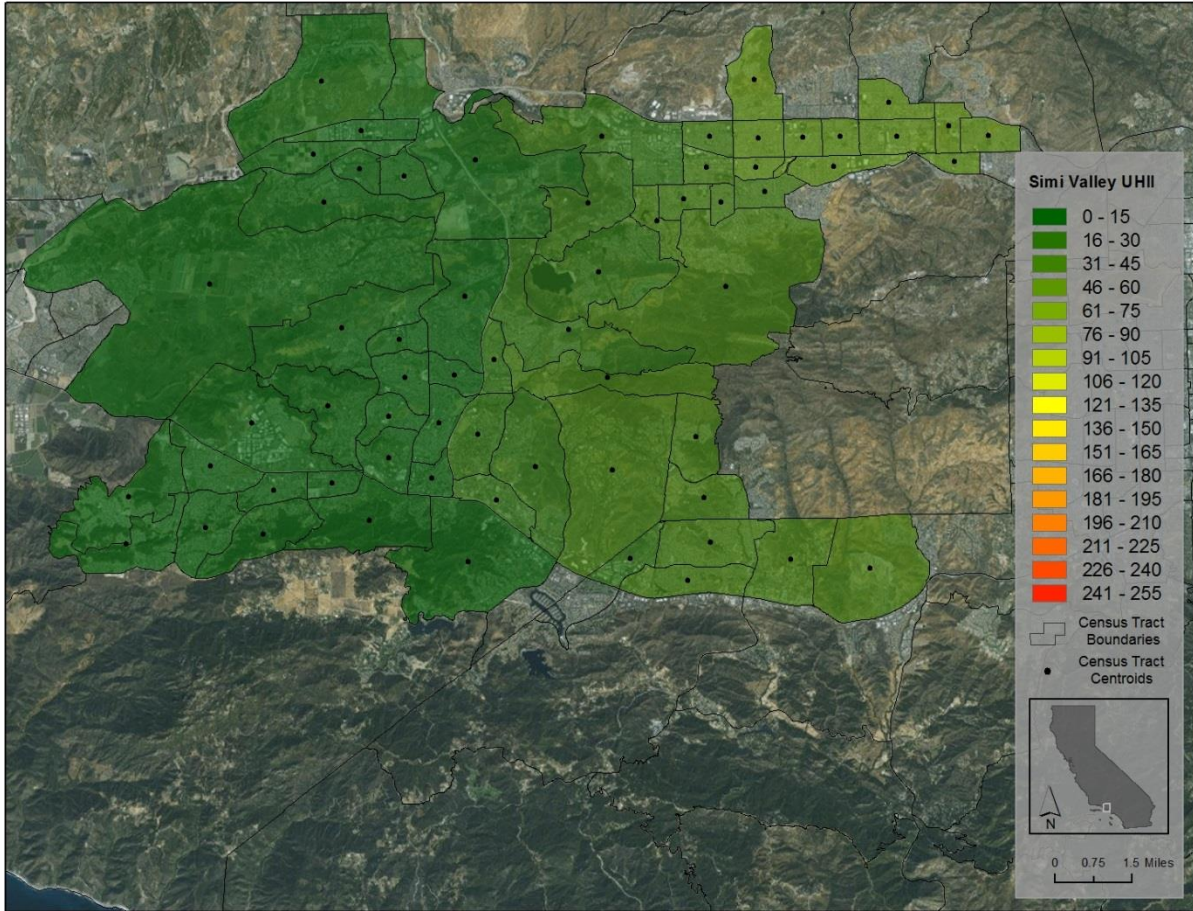


Figure B37: Simi Valley and Thousand Oaks areas UHII (DH/day).
 Average temperature difference between warmest and coolest census tracts is 2.4°C.

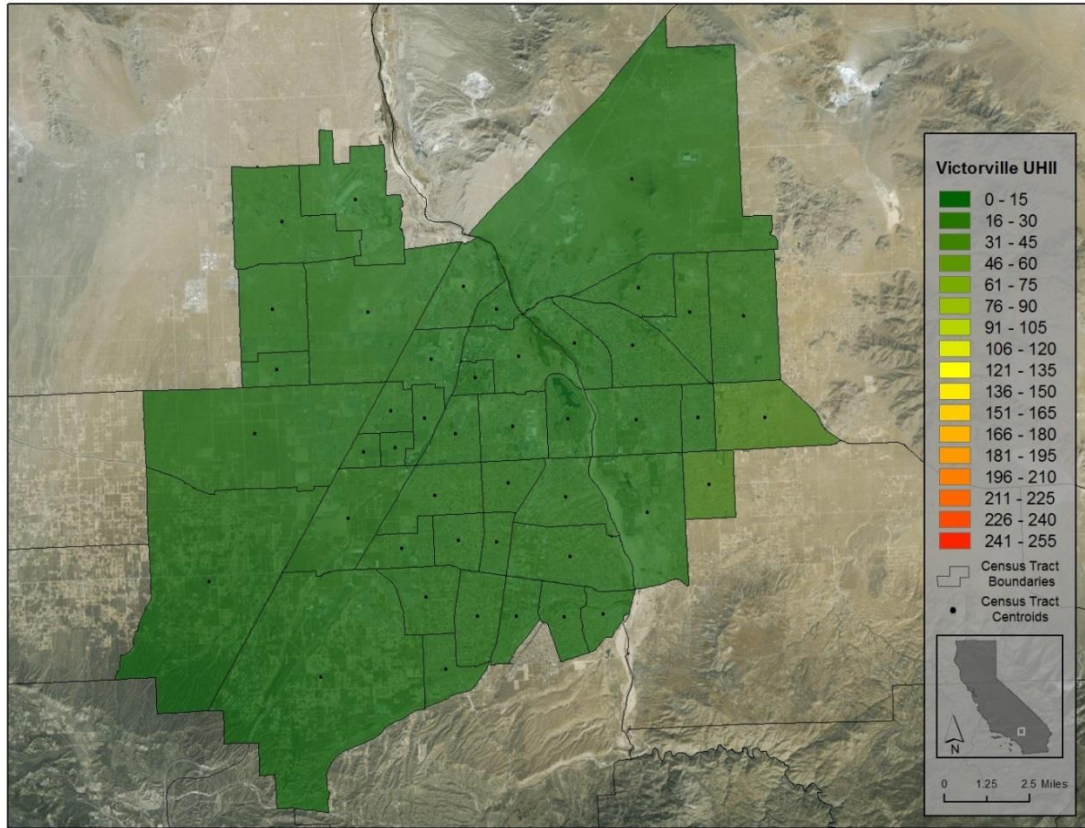


Figure B38: Victorville area UHII (DH/day).
 Average temperature difference between warmest and coolest census tracts is 0.4°C.

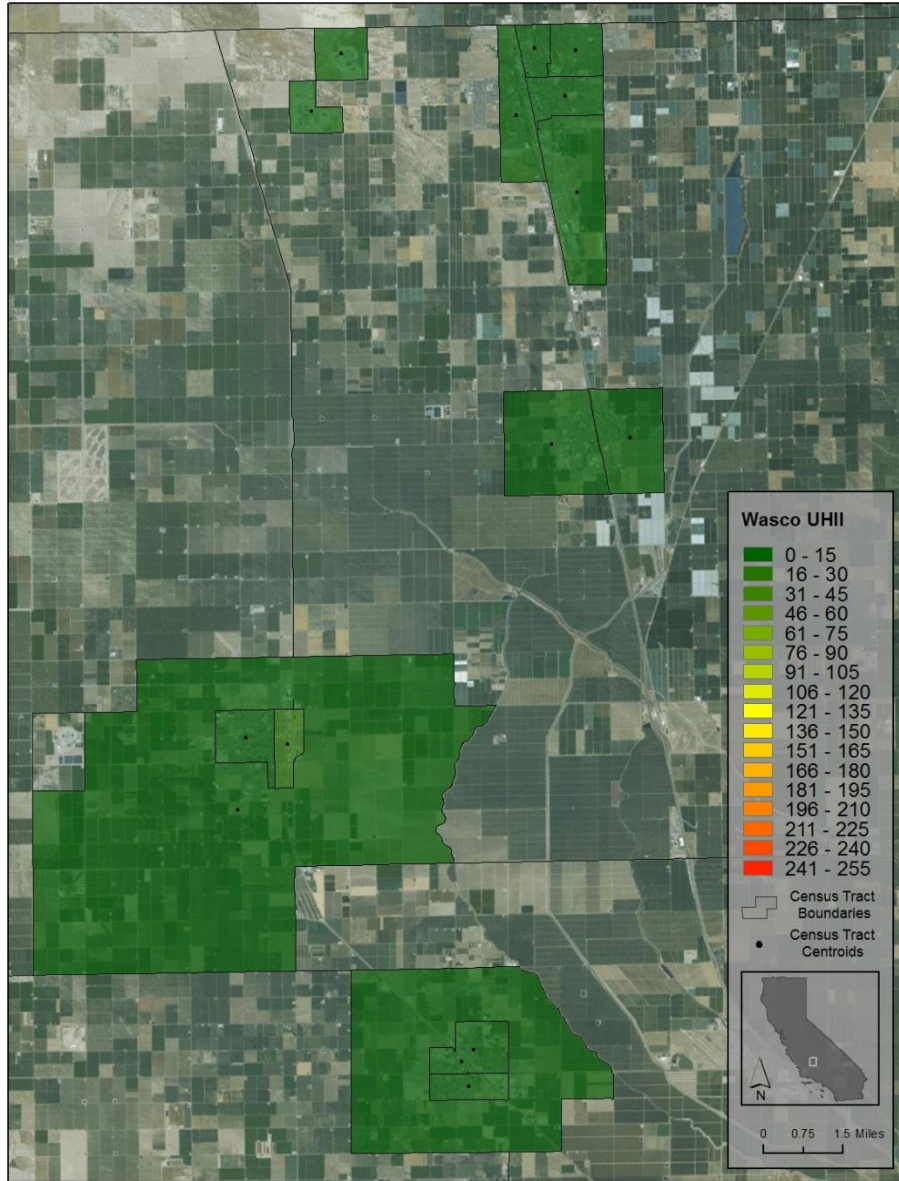


Figure B39: Delano, Wasco, and Shafter areas UHII (DH/day).
 Average temperature difference between warmest and coolest census tracts is 0.6°C.

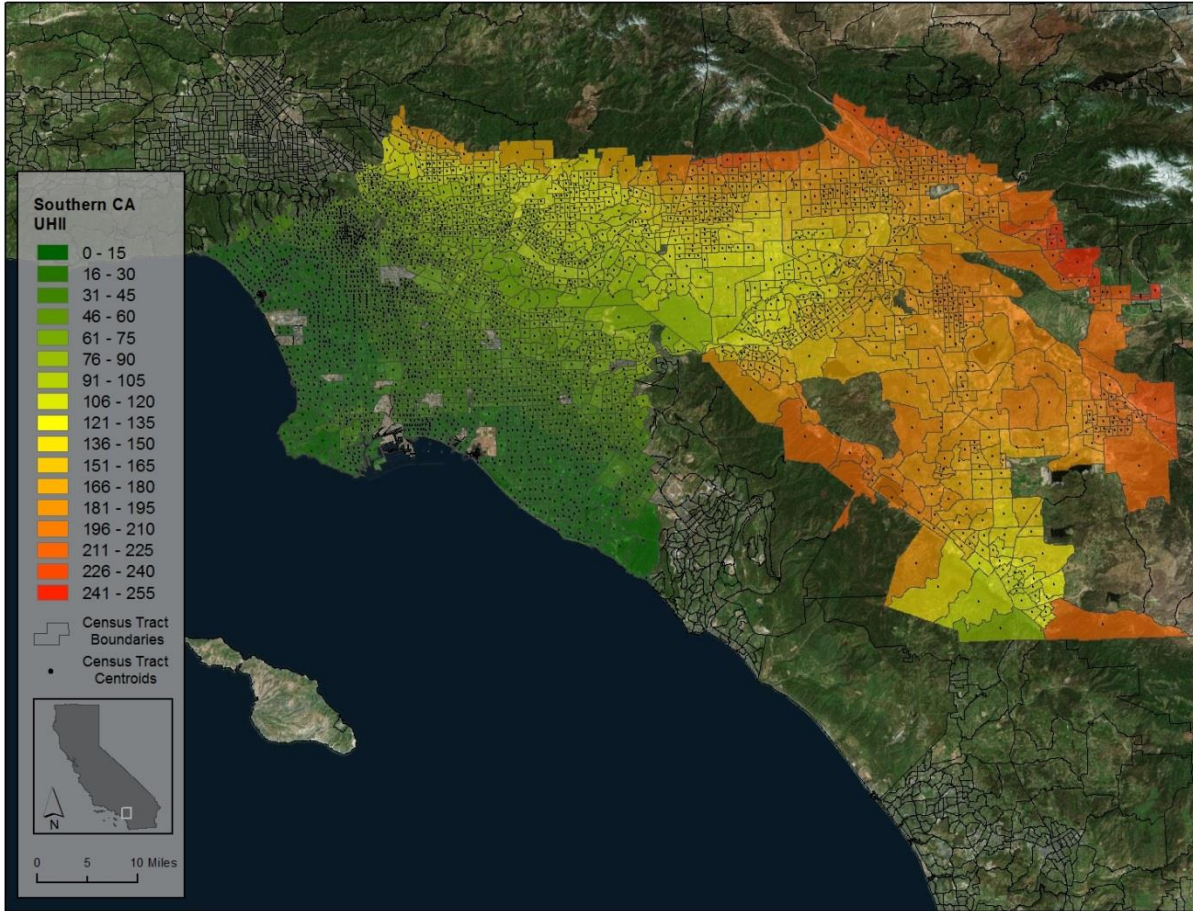


Figure B40: Los Angeles east and west basins as a continuous scale. Average temperature difference between warmest and coolest census tracts is 10.6°C.